

# BASIS OF BEARING

The Southeast corner of Section 11 to the Northeast corner of Section 2, Township 2 South, Range 35 East of the Willamette Meridian being North 0°02'02" East, as per Survey Number 027-2003

SCALE: 1" = 500'

## LEGEND

- Found monument as described, marked as per Union County monumentation records
- ⊙ Set 2 1/2"x30" aluminum pipe with 2 1/2" aluminum cap, marked as per Union County monumentation records, filed separately
- Set 5/8"x30" iron pin with 2" aluminum cap, marked as per Union County monumentation records, filed separately
- ( ) Record measurement as per field notes of GLO Contract No. 451, executed by Rufus Moore

## REFERENCE MATERIAL

Union County Monumentation Records  
 Survey Number 43-82  
 Survey Number 027-2003  
 Survey Number 030-2008

Field Notes for GLO Contract Number 451, executed by Rufus Moore, dated June 12, 1882

DEED REFERENCES  
 Microfilm Document Number 20134220  
 Microfilm Document Number 20045925

## NARRATIVE


This survey was done at the request of Patrick Marolla, on behalf of Hancock Forest Management, land manager for the land within. Mr. Marolla wanted select corners set in Section 15 prior to logging.

I find and accept the existing monuments as shown hereon. At the Northwest corner of the Section, I find no remains of original GLO evidence. There are three corner location tags on snags as mentioned in corner record filed in Union County Monumentation Records as 10-88R, dated Sept 14, 1987. Origins of this corner record are unavailable. Corner record implies that there was both a fence corner and an original bearing tree at the time. Bearing and distances on location tags appear to converge on a single position. This position is no longer a fence corner, but it is harmonious both in bearing and distance with the NE corner of Section 15 and in bearing with the quarter corner between Section 15 and 16. Because I believe that these location tags represent a perpetuation of the original corner, as well as representing a position of a former line of possession, I accept these tags as the best available evidence.

No remaining evidence could be found at the North quarter corner. I set this corner at proportionate position. Subdivision of the section is as per BLM Manual of Instructions.

I find no other unusual conditions with this survey.

REGISTERED  
 PROFESSIONAL  
 LAND SURVEYOR  
  
 OREGON  
 JUNE 2, 2010  
 JEFFREY S. HSU  
 83571  
 Renewal Date: June 30, 2017

UNION COUNTY  
 SURVEYOR  
 Date Received 5/16/16  
 Date Filed 5/16/16  
 By   
 File No. 015-2016

 **BAGETT, GRIFFITH & BLACKMAN**  
 2006 Adams Avenue, LaGrande, Oregon  
 Map of Survey

Situate in Section 15, Township 2 South,  
 Range 35 East of the Willamette Meridian

UNION COUNTY, OREGON

SURVEYED FOR Hancock Forest Management

SURVEYED BY J. S. H.

Scale: 1" = 500' Drawn by: J. S. H. May 2016

SURVEY NUMBER 015-2016

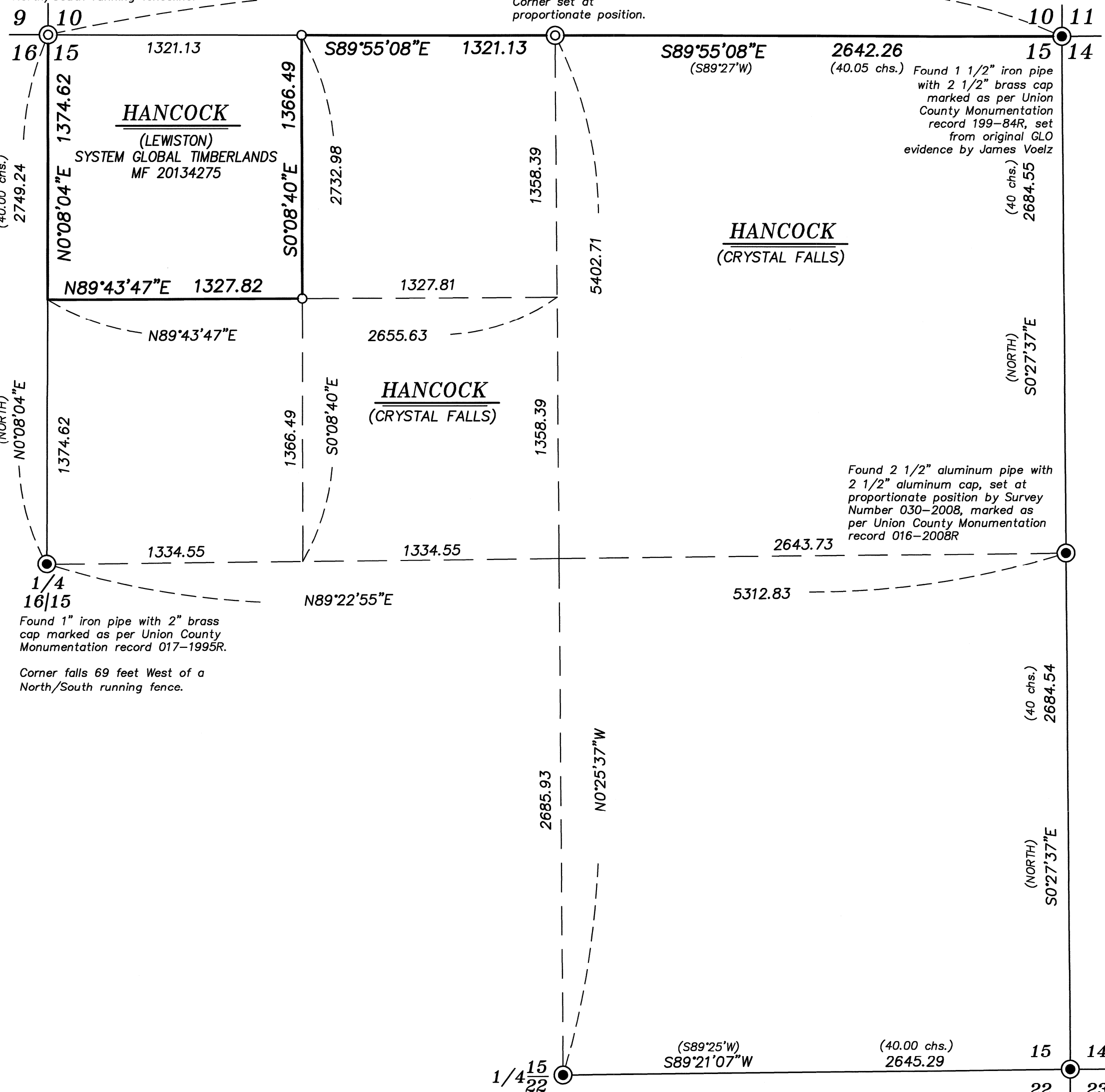
Searched for, no original evidence found.  
 Corner set from location tags. SEE NARRATIVE.

Corner falls 11 feet West of a North/South running fence line.

(S89°27'W)  
 S89°55'08"E

Searched for, not found.  
 Corner set at proportionate position.

(80.10 chs.)  
 5284.52



Found 1 1/2" iron pipe with 2 1/2" brass cap marked as per Union County Monumentation record 199-84R, set from original GLO evidence by James Voelz

Found 2 1/2" aluminum pipe with 2 1/2" aluminum cap, set at proportionate position by Survey Number 030-2008, marked as per Union County Monumentation record 016-2008R

Found 1" iron pipe with 2" brass cap marked as per Union County Monumentation record 017-1995R.

Corner falls 69 feet West of a North/South running fence.

Found 2 1/2" brass cap in collar of stone, set at proportionate position by Survey Number 43-82, marked as per Union County Monumentation record 202-84R

Found 2 1/2" brass, set from original evidence by Survey Number 43-82, marked as per Union County Monumentation record 202-84R