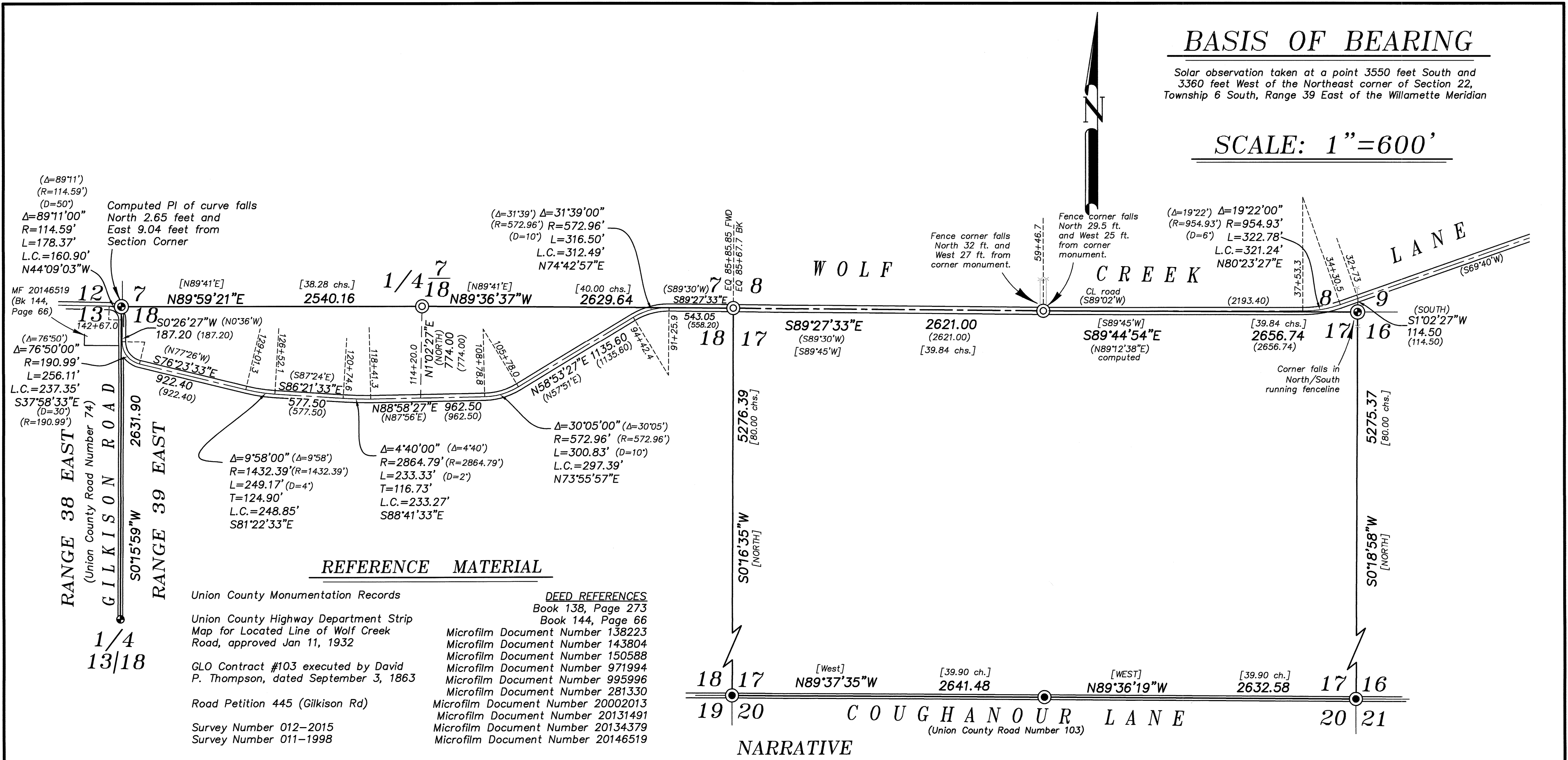


# BASIS OF BEARING

Solar observation taken at a point 3550 feet South and 3360 feet West of the Northeast corner of Section 22, Township 6 South, Range 39 East of the Willamette Meridian

SCALE: 1" = 600'



## REFERENCE MATERIAL

- Union County Monumentation Records**
- Union County Highway Department Strip Map for Located Line of Wolf Creek Road, approved Jan 11, 1932
  - GLO Contract #103 executed by David P. Thompson, dated September 3, 1863
  - Road Petition 445 (Gilkinson Rd)
  - Survey Number 012-2015
  - Survey Number 011-1998
- DEED REFERENCES**
- Book 138, Page 273
  - Book 144, Page 66
  - Microfilm Document Number 138223
  - Microfilm Document Number 143804
  - Microfilm Document Number 150588
  - Microfilm Document Number 971994
  - Microfilm Document Number 995996
  - Microfilm Document Number 281330
  - Microfilm Document Number 20002013
  - Microfilm Document Number 20131491
  - Microfilm Document Number 20134379
  - Microfilm Document Number 20146519

## NARRATIVE

This survey was done at the request of the Union County Surveyor for the purpose of monumentation of corners along Wolf Creek Lane. In 1930, S.B. Morgan conducted a road survey for the Union County Highway Department and tied the located line of Wolf Creek Road to section and quarter corners along the alignment. I begin this survey by tying the centerline of the existing road and lines of possession in the area. The centerline of Wolf Creek Road matches the record alignment very well in areas, however appears to have excesses in the overall distance, which I discuss further below.

Between Stations 85+85 and 129+00, I find the centerline to match the record data from the 1930 survey very well. I place the quarter corner between Section 7 and 18 at record distance of 774 feet North of Station 114+20.0, accounting for the rotation between my basis of bearings and the record. I place the corner of Section 7, 12, 13, and 18 on the range line at the PI of the curve stating at station 142+67.0. The tangent prior to the curve does seem to have an shift to the East of approximately 8 feet when compared to record dimensions, but it is a short tangent and the range line does follow the centerline of constructed Gilkinson Road when placed as such. Said road was petitioned along the rangeline (See petition #445).

At the corner common to Section 8, 9, 16 and 17, I find an upright wheel axle, protruding approximately 6 inches in a North/South running fenceline. The 1930 strip map calls this a found stone that falls 114.5 feet South of the centerline station. This axle falls approximately 102 feet South of the CL station. I find that the axle also falls North of the extension of the tangent between stations 37+53.3 and 59+46.7 approximately 9 feet. The 1930 strip map places the corner South of the extension of the tangent approximately 8 feet. I therefore reject the axle as a perpetuation of the original monument. I do, however, hold the axle for stationing, but place the section corner at the record 114.5 feet South of the centerline station. Holding this axle at station 32+73 places the quarter corner common to Section 8 and 17 in line with the private road that extends to the North, and in harmony with the conditions found on the 1930 map. Conversation with landowners indicate that they do not believe that there has ever been any realignment of this road. I place the corner common to sections 7, 8, 17 and 18 at record station from the West. To account for the excess distance in the stationing, I place a station equation at this corner. Corners placed as such match very harmoniously with record GLO distances to section corners to the South, placed by Survey Number 012-2015.

The road survey shows a symbol at the corner common to Section 7, 12, 13 and 18 on the range line at approximately the PI station of the curve at station 142+67.0. However, no monument or station is specified for this corner. I find that the alignment of Wolf Creek Lane between Station 140+79.8 and 142+67.0 falls approximately 8 feet to the East of the computed position of the tangent line. I therefore reject placing this corner at the PI station. The road petition for Gilkinson Lane does make a call to this corner, beginning at a point 20 rods South. An unrecorded study by Bill Hanley, retraced later by County Surveyor Greg Blackman by survey recorded as Survey Number 011-1998 indicates the range line being coincident with the centerline of Gilkinson Lane. Gilkinson Lane centerline and the Wolf Creek centerline (between the aforementioned stations) are not coincident, as implied in the road survey. If the centerline of Gilkinson Lane is extended Northward to the point of intersection with the constructed centerline of Wolf Creek Lane as it extends to the West, it is very harmonious with the lines of possession of the deed 20146519 (Bk 144, Page 66, tract shown as Wolf Creek School District tract on road survey). I therefore place this monument at this location.

I find no other unusual conditions with this survey.

## LEGEND

- Found 2 1/2" brass cap in water valve box, set by Survey Number 012-2015
- Found 2 1/2" aluminum cap, set by Survey Number 011-1998
- ⊙ Set 5/8" copperclad iron pin with 2 1/2" brass cap, marked as per Union County Monumentation records, filed separately
- ⊙ Set 2 1/2" aluminum pipe with 2 1/2" aluminum cap, marked as per Union County Monumentation records, filed separately
- Centerline
- Existing Fenceline
- ( ) Record information of Union County Highway Department Location map of Wolf Creek Market Road No. 19, approved Jan 11, 1932
- [ ] Record information of GLO Contract #103 executed by David P. Thompson, dated September 3, 1863

UNION COUNTY SURVEYOR

Date Received 3/28/16

Date Filed 3/28/16

By Hil Gilkin

File No. 011-2016

REGISTERED PROFESSIONAL LAND SURVEYOR

JEFFREY S. HSU

RENEWAL DATE: June 30, 2017

**BAGETT, GRIFFITH & BLACKMAN**

2006 Adams Avenue, LaGrande, Oregon

Map of Survey

Monumentation of selected corners in Township 6 South, Range 39 East of the Willamette Meridian

UNION COUNTY, OREGON

SURVEYED FOR	Union County Surveyor	
SURVEYED BY	J. S. H.	Jan-Feb 2016
Scale: 1" = 600'	Drawn by: J. S. H.	Feb 2016

SURVEY NUMBER 011-2016