

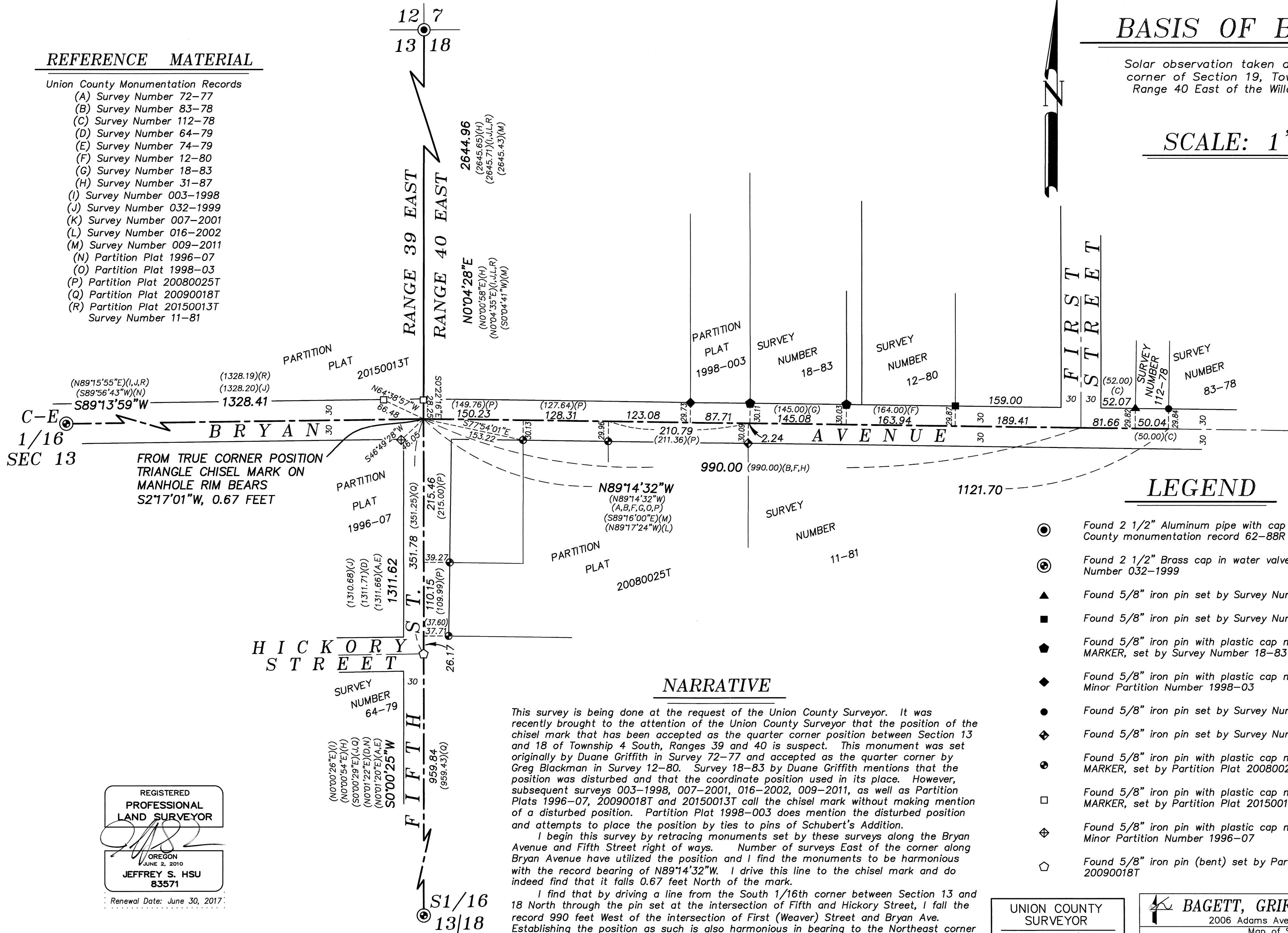
BASIS OF BEARING

Solar observation taken at the Northwest corner of Section 19, Township 4 South, Range 40 East of the Willamette Meridian.

SCALE: 1" = 100'

REFERENCE MATERIAL

- Union County Monumentation Records
- (A) Survey Number 72-77
 - (B) Survey Number 83-78
 - (C) Survey Number 112-78
 - (D) Survey Number 64-79
 - (E) Survey Number 74-79
 - (F) Survey Number 12-80
 - (G) Survey Number 18-83
 - (H) Survey Number 31-87
 - (I) Survey Number 003-1998
 - (J) Survey Number 032-1999
 - (K) Survey Number 007-2001
 - (L) Survey Number 016-2002
 - (M) Survey Number 009-2011
 - (N) Partition Plat 1996-07
 - (O) Partition Plat 1998-03
 - (P) Partition Plat 20080025T
 - (Q) Partition Plat 20090018T
 - (R) Partition Plat 20150013T
 - Survey Number 11-81



LEGEND

- Found 2 1/2" Aluminum pipe with cap marked as per Union County monumentation record 62-88R
- ⊙ Found 2 1/2" Brass cap in water valve box, set by Survey Number 032-1999
- ▲ Found 5/8" iron pin set by Survey Number 112-78
- Found 5/8" iron pin set by Survey Number 12-80
- ◆ Found 5/8" iron pin with plastic cap marked BGA SURVEY MARKER, set by Survey Number 18-83
- ♦ Found 5/8" iron pin with plastic cap marked APA, set by Minor Partition Number 1998-03
- Found 5/8" iron pin set by Survey Number 83-78
- ◆ Found 5/8" iron pin set by Survey Number 11-81
- Found 5/8" iron pin with plastic cap marked BGB SURVEY MARKER, set by Partition Plat 20080025T
- Found 5/8" iron pin with plastic cap marked BGB SURVEY MARKER, set by Partition Plat 20150013T
- ◆ Found 5/8" iron pin with plastic cap marked APA, set by Minor Partition Number 1996-07
- ◇ Found 5/8" iron pin (bent) set by Partition Plat Number 20090018T

NARRATIVE

This survey is being done at the request of the Union County Surveyor. It was recently brought to the attention of the Union County Surveyor that the position of the chisel mark that has been accepted as the quarter corner position between Section 13 and 18 of Township 4 South, Ranges 39 and 40 is suspect. This monument was set originally by Duane Griffith in Survey 72-77 and accepted as the quarter corner by Greg Blackman in Survey 12-80. Survey 18-83 by Duane Griffith mentions that the position was disturbed and that the coordinate position used in its place. However, subsequent surveys 003-1998, 007-2001, 016-2002, 009-2011, as well as Partition Plats 1996-07, 20090018T and 20150013T call the chisel mark without making mention of a disturbed position. Partition Plat 1998-003 does mention the disturbed position and attempts to place the position by ties to pins of Schubert's Addition.

I begin this survey by retracing monuments set by these surveys along the Bryan Avenue and Fifth Street right of ways. Number of surveys East of the corner along Bryan Avenue have utilized the position and I find the monuments to be harmonious with the record bearing of N89°14'32"W. I drive this line to the chisel mark and do indeed find that it falls 0.67 feet North of the mark.

I find that by driving a line from the South 1/16th corner between Section 13 and 18 North through the pin set at the intersection of Fifth and Hickory Street, I fall the record 990 feet West of the intersection of First (Weaver) Street and Bryan Ave. Establishing the position as such is also harmonious in bearing to the Northeast corner of Section 13. The position falls on the manhole cover and was thus not remonumented. However, the position was observed and the true position of the corner documented in the Union County GPS observation records.

Dimensions and distance to monuments shown on this map are in their 'as tied' position. I find no other unusual conditions with this survey.

REGISTERED
PROFESSIONAL
LAND SURVEYOR

OREGON
JUNE 2, 2010
JEFFREY S. HSU
83571

Renewal Date: June 30, 2017

UNION COUNTY
SURVEYOR

Date Received 2/24/16

Date Filed 2/24/16

By J. S. Hsu

File No. 008-2016

BAGETT, GRIFFITH & BLACKMAN
2006 Adams Avenue, LaGrande, Oregon
Map of Survey

Study of the quarter corner common to Section 13, Township 4 South, Range 39 East and Section 18, Township 4 South, Range 40 East of the Willamette Meridian

UNION COUNTY, OREGON

SURVEYED FOR	Union County Surveyor
SURVEYED BY	J. S. H.
Scale: 1" = 100'	Drawn by: J. S. H. Feb. 2016

SURVEY NUMBER 008-2016