

Record of a Boundary Line Agreement Survey

in Sections 12 and 13, Township 1 North, Range 40 East, of the Willamette Meridian, Union County, Oregon.

LEGEND

- ▲ Monument Found, a 5/8 ins. diam. x 30 ins. long Iron Rod with yellow plastic cap from 035-2000
- △ Monument Set, a 5/8 ins. diam. x 30 ins. long Iron Rod with yellow plastic cap marked "TIMBERLINE SURVEYS PLS 1015".
- ⊕ Monument Set as described, Monumentation Record filed separately in the Records of the Union County Surveyor.
- Boundary Line
- x- Existing Fence Line
- () Record Data from 035-2000

NARRATIVE

This survey was conducted for the purpose of a Boundary Line Agreement at the request of Benjamin Boyd of the Hostetter Law Group, LLP. The 1/4 corner to Sections 12/13 was gone, said corner was replaced by record measurements from the bearing trees per the Union County Monumentation Records. The distance along the Section line as shown on survey file no. 035-2000 was held (987.64'), a position in the existing fence line was held as shown on the annexed map and a witness corner was set for the approximate East end of the Boundary Line Agreement. A witness monument was set at the West end of the fence to reference the West end of the Boundary Line Agreement line. A monument on the Section line was set at the intersection of the Southerly extension of a North-South fence line and a monument was set at the fence corner on the North end of said North-South fence line to reference the North end of the West Boundary Line Agreement line.

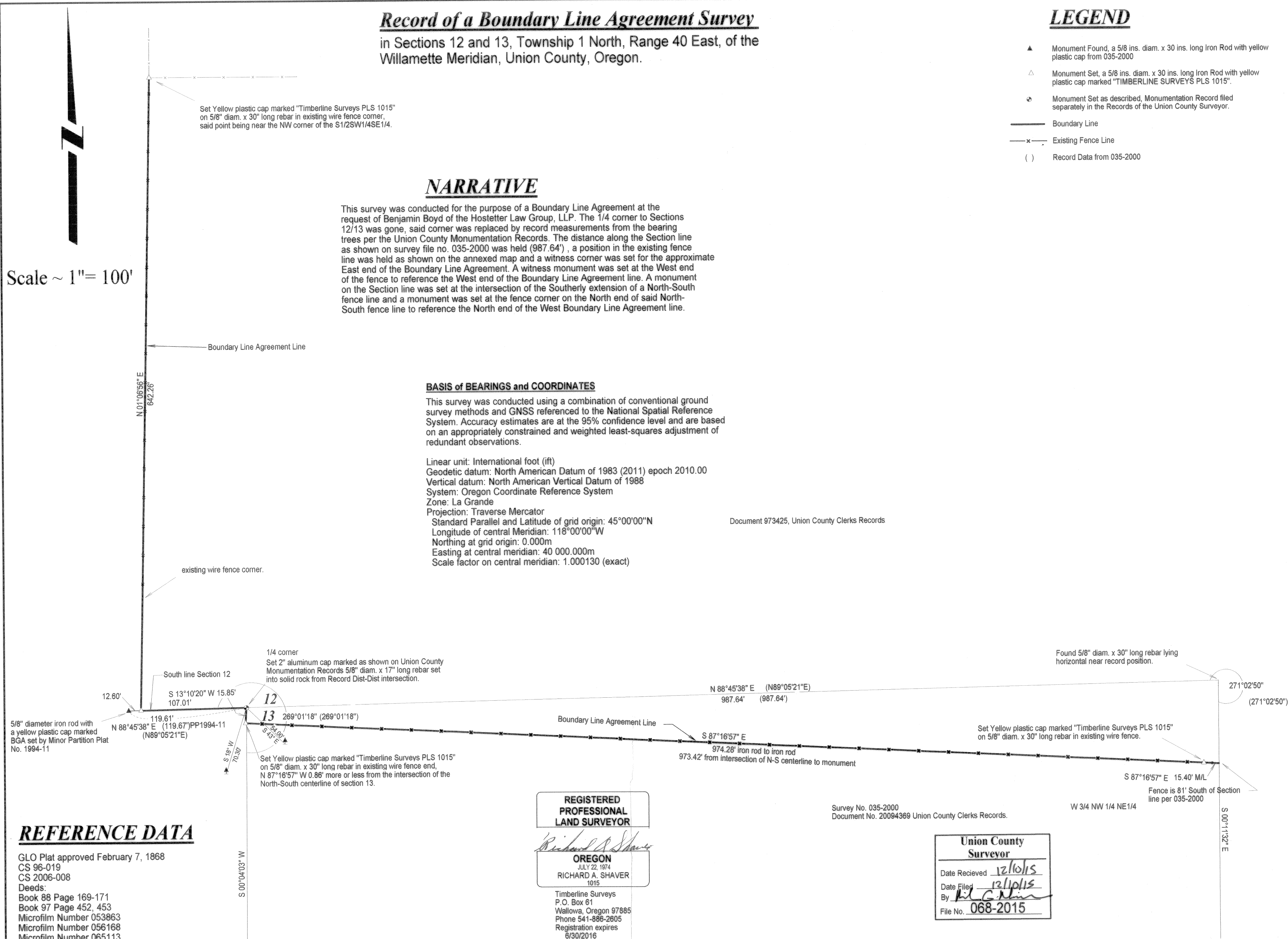
BASIS of BEARINGS and COORDINATES

This survey was conducted using a combination of conventional ground survey methods and GNSS referenced to the National Spatial Reference System. Accuracy estimates are at the 95% confidence level and are based on an appropriately constrained and weighted least-squares adjustment of redundant observations.

Linear unit: International foot (ft)
 Geodetic datum: North American Datum of 1983 (2011) epoch 2010.00
 Vertical datum: North American Vertical Datum of 1988
 System: Oregon Coordinate Reference System
 Zone: La Grande
 Projection: Traverse Mercator
 Standard Parallel and Latitude of grid origin: 45°00'00"N
 Longitude of central Meridian: 118°00'00"W
 Northing at grid origin: 0.000m
 Easting at central meridian: 40 000.000m
 Scale factor on central meridian: 1.000130 (exact)

Document 973425, Union County Clerks Records

Scale ~ 1" = 100'



REGISTERED PROFESSIONAL LAND SURVEYOR

Richard A. Shaver
OREGON
 JULY 22, 1974
 RICHARD A. SHAVER
 1015

Timberline Surveys
 P.O. Box 61
 Wallowa, Oregon 97885
 Phone 541-886-2605
 Registration expires 6/30/2016

Survey No. 035-2000
 Document No. 20094369 Union County Clerks Records.

Union County Surveyor
 Date Received 12/10/15
 Date Filed 12/10/15
 By [Signature]
 File No. 068-2015

REFERENCE DATA

GLO Plat approved February 7, 1868
 CS 96-019
 CS 2006-008
 Deeds:
 Book 88 Page 169-171
 Book 97 Page 452, 453
 Microfilm Number 053863
 Microfilm Number 056168
 Microfilm Number 065113

SURVEY NUMBER 068-2015