

BASIS OF BEARING

True Geodetic North at the corner common to Sections 19, 20, 29 and 30, Township 1 South, Range 40 East of the Willamette Meridian, as determined by GPS observation

SCALE: 1" = 300'

LEGEND

- Found brass cap monument, see Survey Number 039-1998 and 043-1998
- ⊙ Found 2 1/2" aluminum pipe with aluminum cap, marked as per Union County monumentation record 023-1995R
- ⊕ Found 2 1/2" aluminum pipe with aluminum cap marked as per Union County monumentation records, set by Survey Number 043-1998
- Found 5/8" x 30" iron pin with 2 1/2" aluminum cap marked as per Union County Monumentation records, set by Survey Number 014-2015
- ⊙ Set 5/8" x 30" iron pin with 2 1/2" aluminum cap marked as per Union County Monumentation records, filed separately
- [] Record measurement as per Survey Number 043-1998

REFERENCE MATERIAL

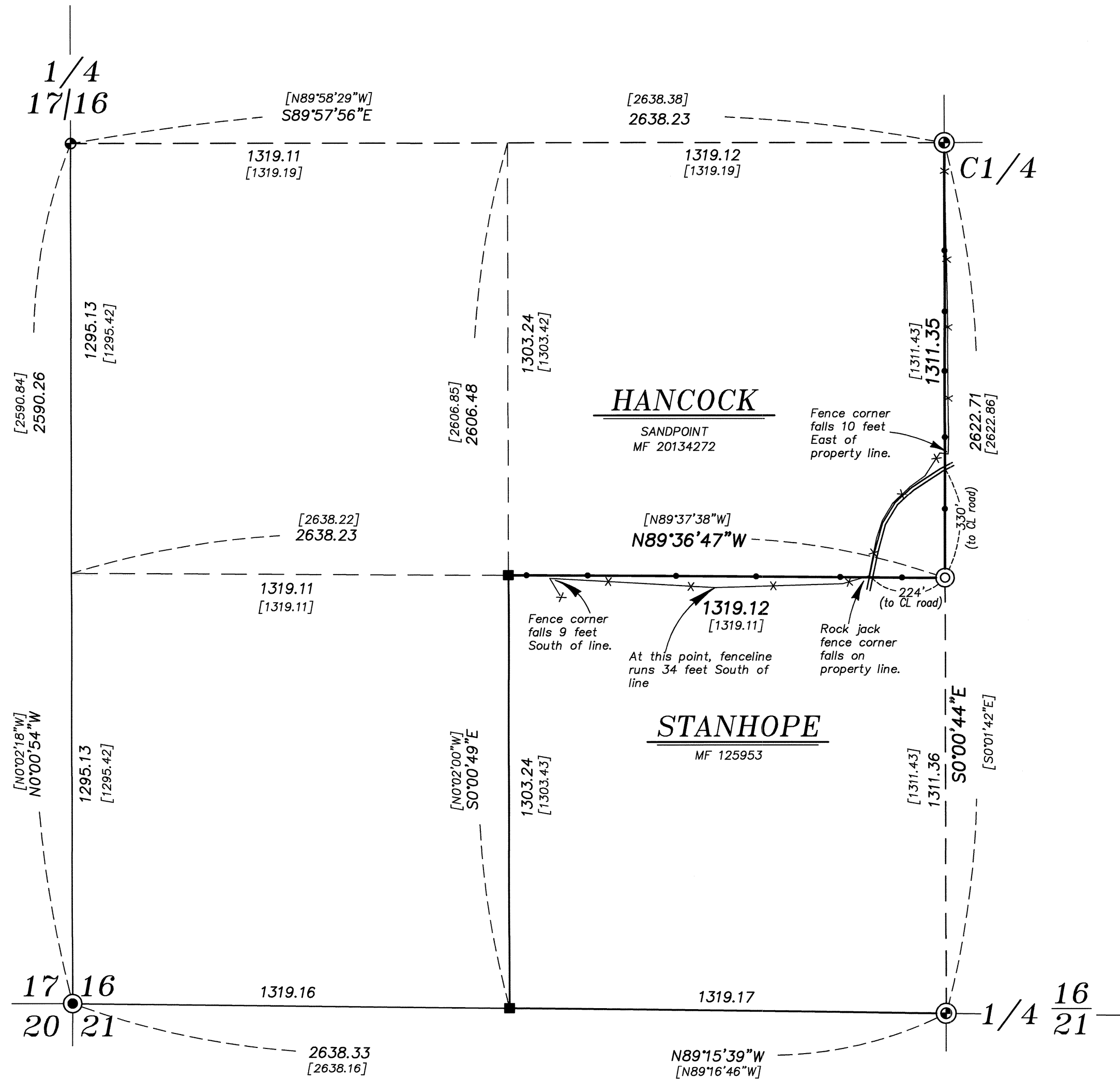
Union County Monumentation Records
 Survey Number 039-1998
 Survey Number 043-1998
 Survey Number 014-2015
 Partition Plat Number 20130001T

DEED REFERENCES

Microfilm Document Number 125953
 Microfilm Document Number 20134272

NARRATIVE

This survey was done at the request of Patrick Marolla on behalf of Hancock Forest Management, land manager of the land within. Mr. Marolla wanted to mark the property boundaries in preparation for logging. The section was previously subdivided by Survey Number 032-1998 and 014-2015. I find the controlling monuments harmonious with said surveys and subdivide the section as per BLM Manual of Instruction 2009. Steel fenceposts were placed on the line as shown at 200-250 foot intervals. Fencelines are off of the property lines as shown. A road that appears to serve the neighboring property cuts across the Southeast corner of the area surveyed. I find no other unusual conditions with this survey.



REGISTERED
 PROFESSIONAL
 LAND SURVEYOR

OREGON
 JUNE 21, 2010
 JEFFREY S. HSU
 83571

Renewal Date: June 30, 2017

UNION COUNTY
 SURVEYOR

Date Received 9/24/15

Date Filed 9/24/15

By T. J. K.

File No. 057-2015

BAGETT, GRIFFITH & BLACKMAN
 2006 Adams Avenue, LaGrande, Oregon
 Map of Survey

Situate in the Southwest quarter of Section 16, Township 1 South, Range 40 East of the Willamette Meridian
 UNION COUNTY, OREGON

SURVEYED FOR	Hancock Forest Management
SURVEYED BY	J. S. H.
Scale: 1" = 300'	Drawn by: T. J. K. Sept 2015

SURVEY NUMBER 057-2015