

BASIS OF BEARING

Forward bearing as published by the U.S.C. and G.S. from Δ COLLEGE to Δ VALLEY Dated 1946.

SCALE: 1"=30'

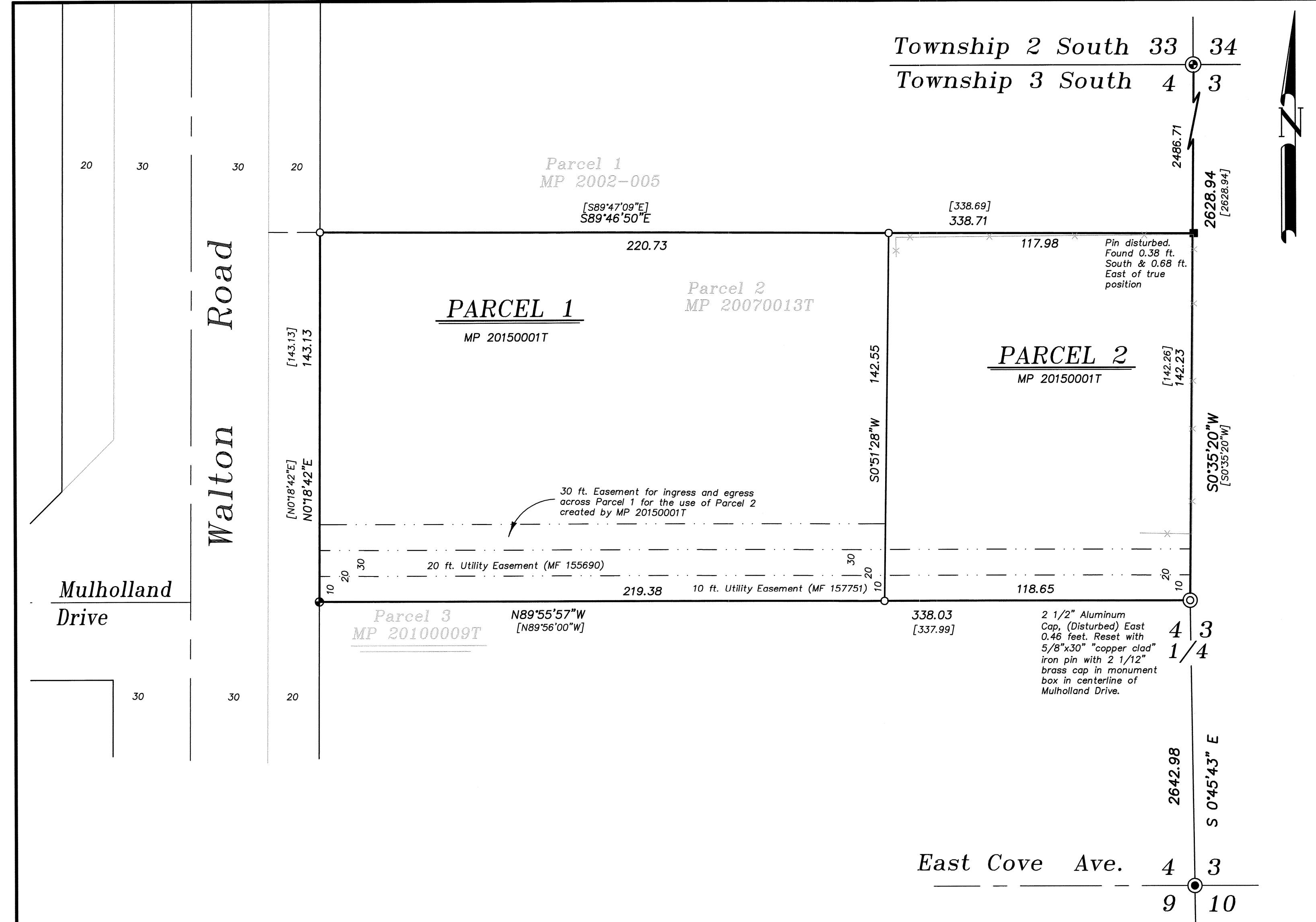
REFERENCE MATERIAL

- Union County Monumentation Records
- Survey Number 21-76
 - Survey Number 54-76
 - Survey Number 1-84
 - Survey Number 5-93
 - Survey Number 027-2001
 - Survey Number 014-2003
 - Survey Number 006-2007
 - Partition Plat Number 1992-14
 - Partition Plat Number 1992-22
 - Partition Plat Number 1994-05
 - Partition Plat Number 1994-27
 - Partition Plat Number 1997-22
 - Partition Plat Number 1998-15
 - Partition Plat Number 1999-008
 - Partition Plat Number 1999-009
 - Partition Plat Number 2000-026
 - Partition Plat Number 2001-007
 - Partition Plat Number 2001-013
 - Partition Plat Number 2002-005
 - Partition Plat Number 2003-0006
 - Partition Plat Number 20070013T
 - Partition Plat Number 20100009T
 - Partition Plat Number 20130007T
 - Partition Plat Number 20150001T

- DEED REFERENCES
- Microfilm Number 155690
 - Microfilm Number 157751
 - Microfilm Number 20093478
 - Microfilm Number 20102418

LEGEND

- ⊙ Found brass cylinder in concrete as per monumentation record number 841-84R
- ⊙ Found 2 1/2" aluminum monument as per monumentation record number 840-84R
- Found 5/8" iron pin-no cap (disturbed) set by partition plat number 1999-009
- Found 5/8" iron pin with plastic cap marked "BGB SURVEY MARKER" set by partition plat number 20100009T
- Found 5/8" iron pin with plastic cap marked "BGB SURVEY MARKER" set by partition plat number 20150001T
- ⊙ Set 5/8"x30" "copper clad" iron pin with 2 1/2" brass cap in monument box (See monumentation record filed separately)
- [] Record information of partition plat number 20070013T
- Centerline
- x-x- Existing fence line
- .-.- Easement line



NARRATIVE

This partition was performed to document the re-monumentation of the East 1/4 corner of Section 4 of Township 3 South, Range 38 East of the Willamette Meridian. This corner was monumented as documented by survey number 1-84. Many surveys and partitions used the monument over the years. Partition Plat 1998-15 is the first documentation that the monument had become disturbed and out of position. The surveys and partitions after that discuss the monument being disturbed and out of position. There have been recent road improvements, which further disturbed and buried the monument. The area around the monument is now an asphalt surface, so a new monument was set in a monument box in the asphalt. The old monument was removed. I find no unusual conditions on this survey.

REGISTERED PROFESSIONAL LAND SURVEYOR
 RICK G. ROBINSON
 2219
 Renewal Date: Dec. 31, 2016

UNION COUNTY SURVEYOR
 Date Received 8/31/15
 Date Filed 8/31/15
 By [Signature] DEPUTY
 File No. 053-2015

BAGETT, GRIFFITH & BLACKMAN
 2006 Adams Avenue, LaGrande, Oregon
 Map of Survey
 Replacement of the quarter corner common to Sections 3 and 4, Township 3 South, Range 38 East of the Willamette Meridian
 UNION COUNTY, OREGON

SURVEYED FOR	Union County
SURVEYED BY	R.G.R. 8/2015
Scale: 1" = 30'	Drawn by: R.G.R. 8/2015