

# LOT LINE ADJUSTMENT

## BASIS OF BEARING

Solar observation taken at the North quarter corner of Section 15, Township 1 North, Range 39 East of the Willamette Meridian.

SCALE: 1" = 60'

## REFERENCE MATERIAL

ODOT Drawing Number 8B-31-25  
Plat of Elgin Industrial Park  
Survey Number 015-2006  
Survey Number 004-2009  
Survey Number 042-2013

### DEED REFERENCES

Microfilm Number 98966  
Microfilm Number 20010035  
Microfilm Number 20013356  
Microfilm Number 20014452  
Microfilm Number 20015295  
Microfilm Number 20015295A  
Microfilm Number 20020946  
Microfilm Number 20020947  
Microfilm Number 20020948  
Microfilm Number 20062722  
Microfilm Number 20092425

## LEGEND

- Found 5/8" iron pin with plastic cap marked "BGB SURVEY MARKER" set by the plat of Elgin Industrial Park
- ▲ Found 5/8" iron pin with 2" aluminum cap set by ODOT Drawing 8B-31-25
- Found 5/8" iron pin with plastic cap marked "APA" set by survey number 015-2006
- ⊙ Found 5/8" iron pin with aluminum cap marked "APA OR 2849 WA 41295" set by survey number 004-2009
- Found 5/8" iron pin with plastic cap marked "BGB SURVEY MARKER" set by survey number 042-2013
- Set 5/8" iron pin with plastic cap marked "BGB SURVEY MARKER"
- Centerline
- - - Easement Line
- SS- Proposed Sanitary Sewer line

REGISTERED  
PROFESSIONAL  
LAND SURVEYOR

*M. G. Bagett*

OREGON  
JULY 17, 1988  
RICK G. ROBINSON  
2219

Renewal Date: Dec. 31, 2016

**BAGETT, GRIFFITH & BLACKMAN**  
2006 Adams Avenue, LaGrande, Oregon

Map of Survey		
LOT LINE ADJUSTMENT		
Portions of Lots 2, 3, and 4		
Elgin Industrial Park		
City of Elgin		
UNION COUNTY, OREGON		
SURVEYED FOR	North County Investments, LLC	
SURVEYED BY	R.G.R.	8/15
Scale: 1" = 60'	Drawn by: R.G.R.	8/15

UNION COUNTY SURVEYOR

Date Received 8/7/15

Date Filed 8/7/15

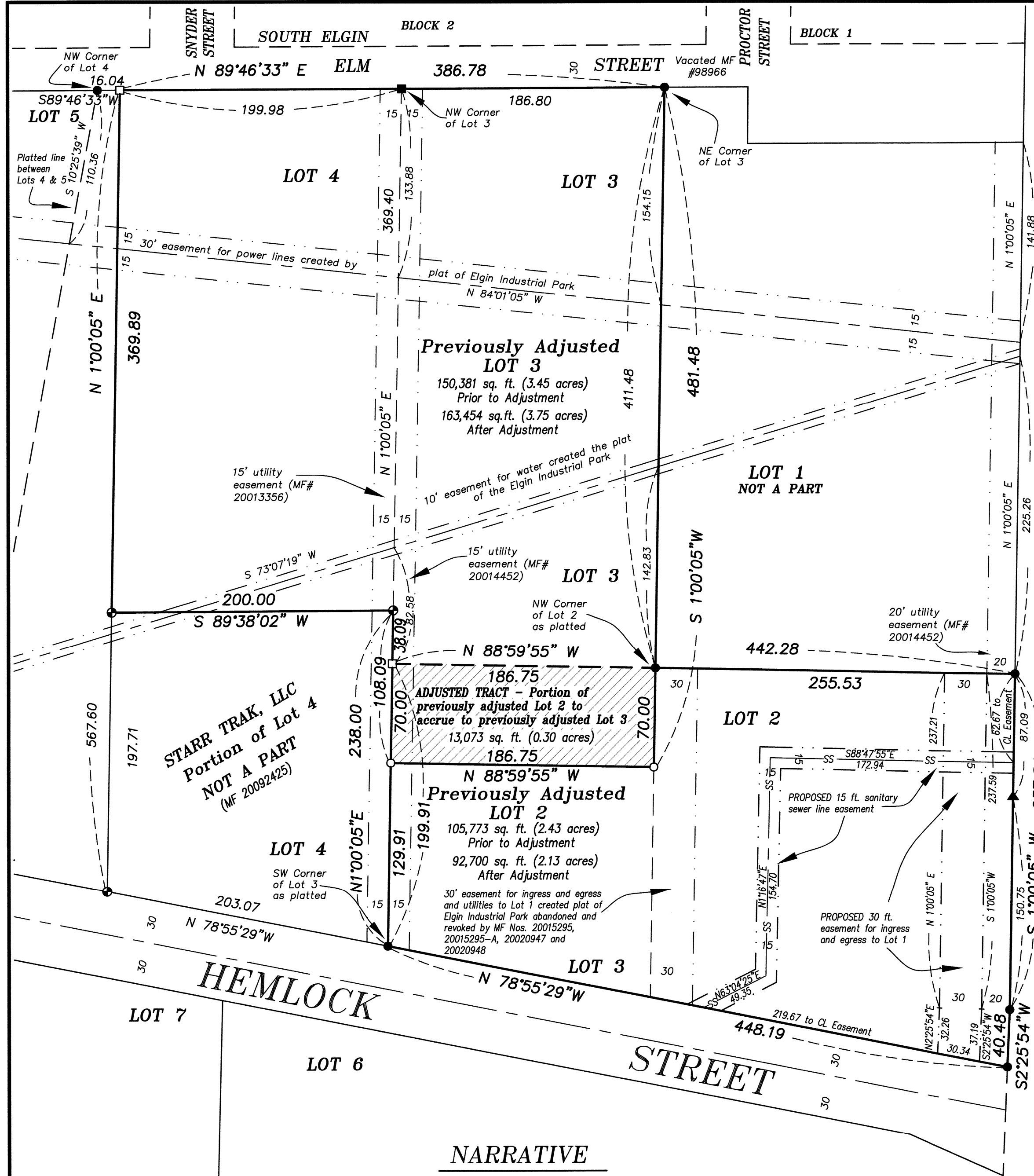
By *[Signature]* DEPUTY

File No. 049-2015

### APPROVAL

Approved as a lot line adjustment this 7 day of August, 2015.

*[Signature]*  
Brock Eckstein  
City of Elgin  
Recorder/Administrator



### NARRATIVE

This survey was done at the request of Bob Wiles of North County Investments, LLC. The purpose of this survey is to monument a lot line adjustment between two tracts in the LLC ownership to accommodate the existing improvements constructed on the lots. This survey also shows the proposed location of two easements. One is a sewer easement running from an existing manhole in Hemlock Street and running Northerly to the West line of Highway 82, to connect to the existing 20 ft utility easement running adjacent to the right of way. The position shown was approved by Mr. Wiles. The other proposed easement is adjacent to the 20 ft. utility easement along the highway right of way and crosses Lot 2 of the industrial park to provide access to Lot 1 of the Elgin Industrial Park. An access easement as originally platted along the West line of Lot 2 but was abandoned and revoked by microfilm numbers 20015295, 20015295-A, 20020947 and 20020948. I found the controlling monuments as shown and set new pins marking the adjusted lines. I find no unusual conditions on this survey.