

BASIS OF BEARING

True Geodetic North at the corner common to Sections 5, 6, 7 and 8, Township 4 South, Range 41 East of the Willamette Meridian as determined by GPS observation (NAD-83 (1991) datum) as per Survey Number 030-2014

SCALE: 1" = 600'

LEGEND

- Found 2 1/2" aluminum pipe with a 2 1/2" aluminum cap, marked as per Union County monumentation records, set by Survey Number 29-86
- ⊙ Found 2 1/2" aluminum pipe with a 2 1/2" aluminum cap, marked as per Union County monumentation records, set by Survey Number 29-88
- Found 2 1/2" aluminum pipe with a 2 1/2" aluminum cap, marked as per Union County monumentation records, set by Survey Number 31-86
- ⦿ Found 2 1/2" iron pipe with a 2 1/2" brass cap, marked as per Union County monumentation record Number 322-83R
- ⊖ Set 2 1/2" x 30" aluminum pipe with 2 1/2" aluminum cap, marked as per Union County Monumentation Records, filed separately
- () Record measurement as per GLO Contract No. 320, executed by Henry M. Thatcher, dated April 1, 1879
- { } Record measurement as per Survey No. 41, page 81 of Old Book Surveys
- [] Record measurement as per Survey Number 29-86
- / / Record measurement as per Survey Number 29-88

REFERENCE MATERIAL

Union County Monumentation Records
 Survey Number 29-86
 Survey Number 29-88
 Survey Number 31-86
 Survey Number 030-2014
 Old Book Survey Number 41 (page 81)

Field Notes from GLO Contract No. 320, executed by Henry M. Thatcher, dated April 1, 1879

DEED REFERENCES

Microfilm Document Number 20134272
 Microfilm Document Number 20134274

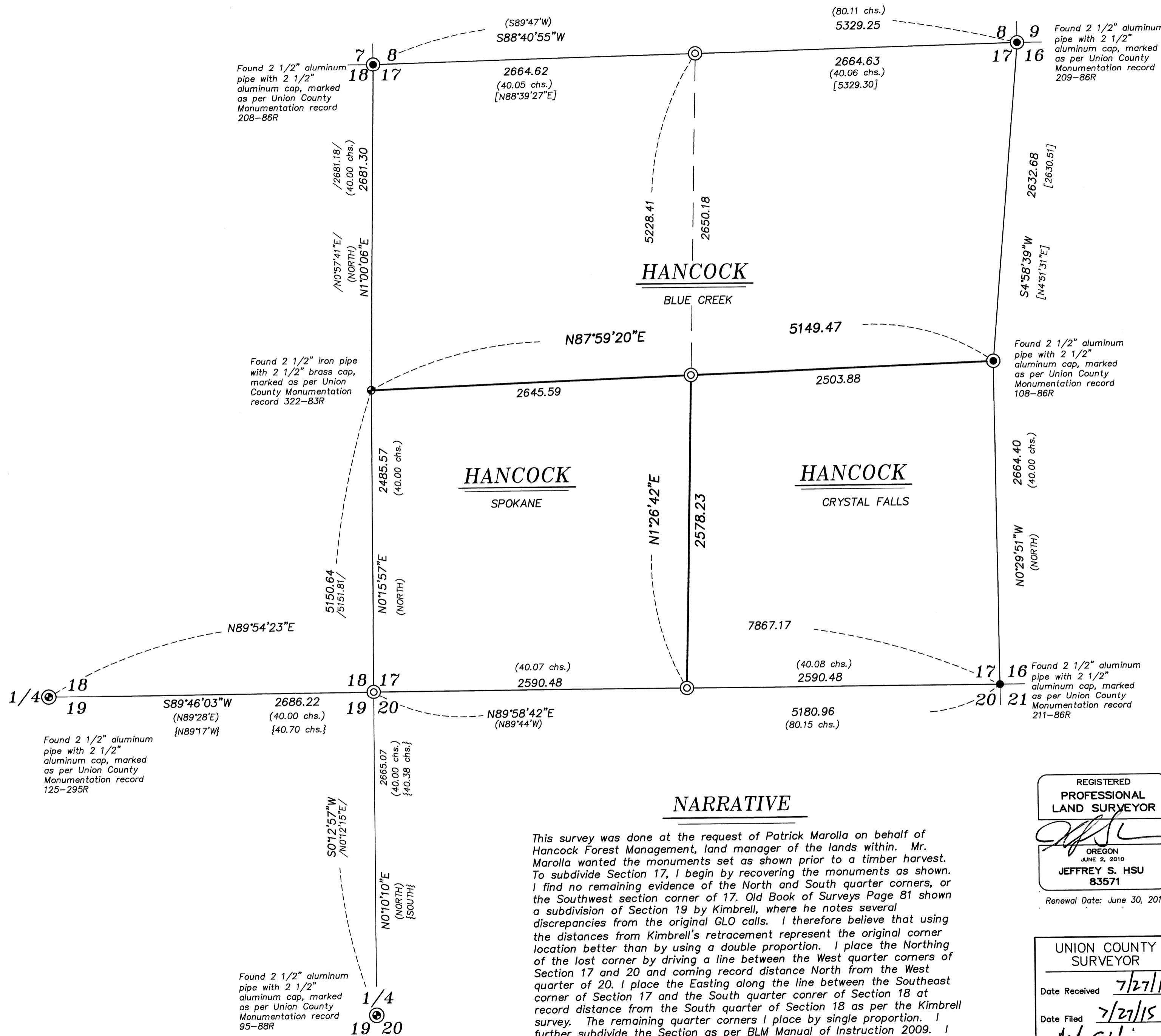
BAGETT, GRIFFITH & BLACKMAN
 2006 Adams Avenue, LaGrande, Oregon
 Map of Survey

Situate in Section 17, Township 4 South, Range 41 East of the Willamette Meridian

UNION COUNTY, OREGON

SURVEYED FOR Hancock Forest Management
 SURVEYED BY J. S. H.

Scale: 1" = 600' Drawn by: T.J.K. July 2015



NARRATIVE

This survey was done at the request of Patrick Marolla on behalf of Hancock Forest Management, land manager of the lands within. Mr. Marolla wanted the monuments set as shown prior to a timber harvest. To subdivide Section 17, I begin by recovering the monuments as shown. I find no remaining evidence of the North and South quarter corners, or the Southwest section corner of 17. Old Book of Surveys Page 81 shown a subdivision of Section 19 by Kimbrell, where he notes several discrepancies from the original GLO calls. I therefore believe that using the distances from Kimbrell's retracement represent the original corner location better than by using a double proportion. I place the Northing of the lost corner by driving a line between the West quarter corners of Section 17 and 20 and coming record distance North from the West quarter of 20. I place the Easting along the line between the Southeast corner of Section 17 and the South quarter corner of Section 18 at record distance from the South quarter of Section 18 as per the Kimbrell survey. The remaining quarter corners I place by single proportion. I further subdivide the Section as per BLM Manual of Instruction 2009. I find no other unusual conditions with this survey.

REGISTERED
 PROFESSIONAL
 LAND SURVEYOR

OREGON
 JUNE 2, 2010
 JEFFREY S. HSU
 83571

Renewal Date: June 30, 2017

UNION COUNTY
 SURVEYOR

Date Received 7/27/15

Date Filed 7/27/15

By J.S.H.

File No. 047-2015