

LOT LINE ADJUSTMENT

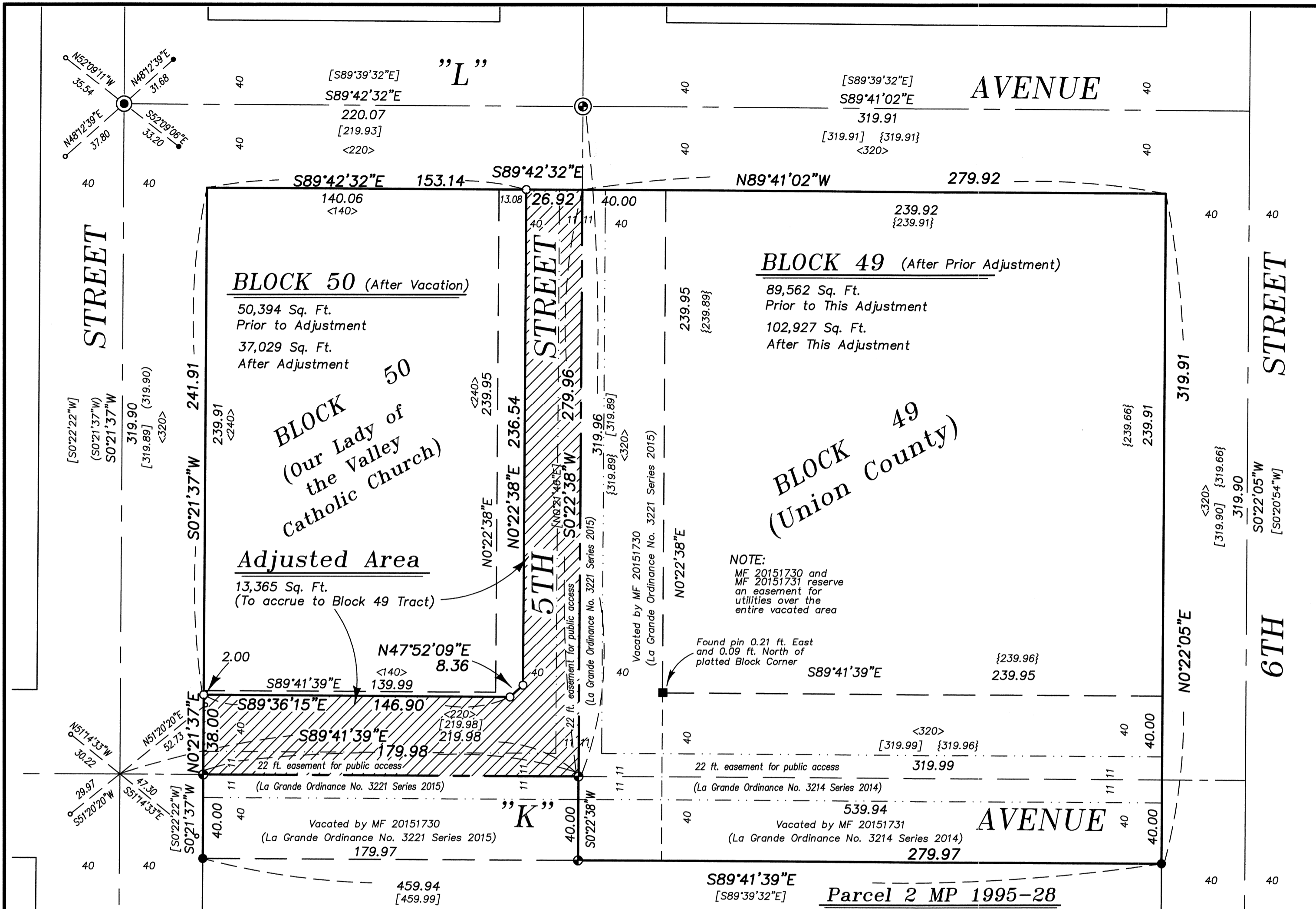
BASIS OF BEARING

Forward bearing as published by the U.S.C. and G.S. from Δ COLLEGE to Δ VALLEY Dated 1946.

SCALE: 1" = 40'

LEGEND

- Found 5/8" iron pin (disturbed) set by Survey Number 13-76
- Found lead plug with brass screw set by Survey Number 18-89 (1922 monumentation of La Grande)
- ⊙ Found crosses on manhole rim set by Survey Number 18-89 (1922 monumentation of La Grande)
- Found 5/8" iron pin with plastic cap marked "APA" set by Minor Partition Plat Number 1995-028
- ⊙ Found 2 1/2" brass cap set by Survey Number 028-2005
- Found lead plug with brass screw set by Survey Number 028-2005
- Found 5/8" iron pin with plastic cap marked "BGB SURVEY MARKER" set by Survey Number 042-2015
- Set 5/8"x30" iron pin with plastic cap marked "BGB SURVEY MARKER"
- Centerline
- Easement line
- - - Original Platted Block Line
- { } Record information of Survey Number 13-76
- < > Record information of Survey Number 18-89 (1922 monumentation of La Grande)
- [] Record information of Survey Number Minor Partition Plat Number 1995-028
- () Record information of Survey Number 028-2005



REFERENCE MATERIAL

- Plat of Chaplin's Addition to La Grande (Supplemental Plat)
 Survey Number 113-73
 Survey Number 13-76
 Survey Number 10-87
 Survey Number 18-89 (1922 monumentation of La Grande)
 Survey Number 028-2005
 Survey Number 042-2015
 Minor Partition Plat Number 1995-28
- DEED REFERENCES**
 Volume 60 Page 17
 Volume 79 Page 234
 Microfilm Number 159969
 Microfilm Number 960195
 Microfilm Number 970117
 Microfilm Number 970162
 Microfilm Number 20033483
 Microfilm Number 20151730
 Microfilm Number 20151731
 Microfilm Number 20151764
 Microfilm Number 20152955

NARRATIVE

This survey was done at the request of Hanley Jenkins. The purpose of this survey is to document a lot line adjustment between the two tracts shown. Block 49 was previously adjusted as documented on Survey Number 042-2015 and deed microfilm number 20152955. Prior to the vacation of "K" Avenue and 5th Street, the County tract was Block 49 and the Catholic Church tract was Block 50. With this adjustment, the Northerly portion of "K" Avenue and the Westerly portion of 5th Street as shown is to accrue to the County tract. The adjusted line as monumented falls on the back of the existing sidewalk, as per agreement filed as Microfilm Number 20151764 in the deed records of Union County. I use the found monumentation as discussed on Survey Number 042-2015 and the monuments set by Survey Number 042-2015 to place the blocks. I have prepared legal descriptions for the adjustment process. I find no other unusual conditions on this survey.

CITY APPROVAL

Approved as a Lot Line Adjustment this 3rd day of September 2015.

Michael J. Boquist
 Michael J. Boquist
 City of La Grande Planner

REGISTERED
 PROFESSIONAL
 LAND SURVEYOR

Rick G. Robinson
 OREGON
 JULY 17, 1986
 RICK G. ROBINSON
 2219

Renewal Date: Dec. 31, 2016

UNION COUNTY
 SURVEYOR

Date Received 9/4/15
 Date Filed 9/4/15
 By *[Signature]*
 File No. 045-2015

BAGETT, GRIFFITH & BLACKMAN
 2006 Adams Avenue, LaGrande, Oregon

Map of Survey		
LOT LINE ADJUSTMENT		
Situate in Blocks 49 and 50 of Chaplin's Addition To La Grande, Supplemental Plat		
UNION COUNTY, OREGON		
SURVEYED FOR	Union County	
SURVEYED BY	R.G.R.	7/15
Scale: 1" = 40'	Drawn by: R.G.R.	7/15

SURVEY NUMBER 045-2015