

# LOT LINE ADJUSTMENT

## BASIS OF BEARING

Forward bearing as published by the U.S.C. and G.S. from Δ COLLEGE to Δ VALLEY Dated 1946.

SCALE: 1" = 50'

### REFERENCE MATERIAL

Plat of Chaplin's Addition to La Grande (Supplemental Plat)  
 Survey Number 113-73  
 Survey Number 13-76  
 Survey Number 10-87  
 Survey Number 18-89 (1922 monumentation of La Grande)  
 Survey Number 028-2005  
 Minor Partition Plat Number 1995-28

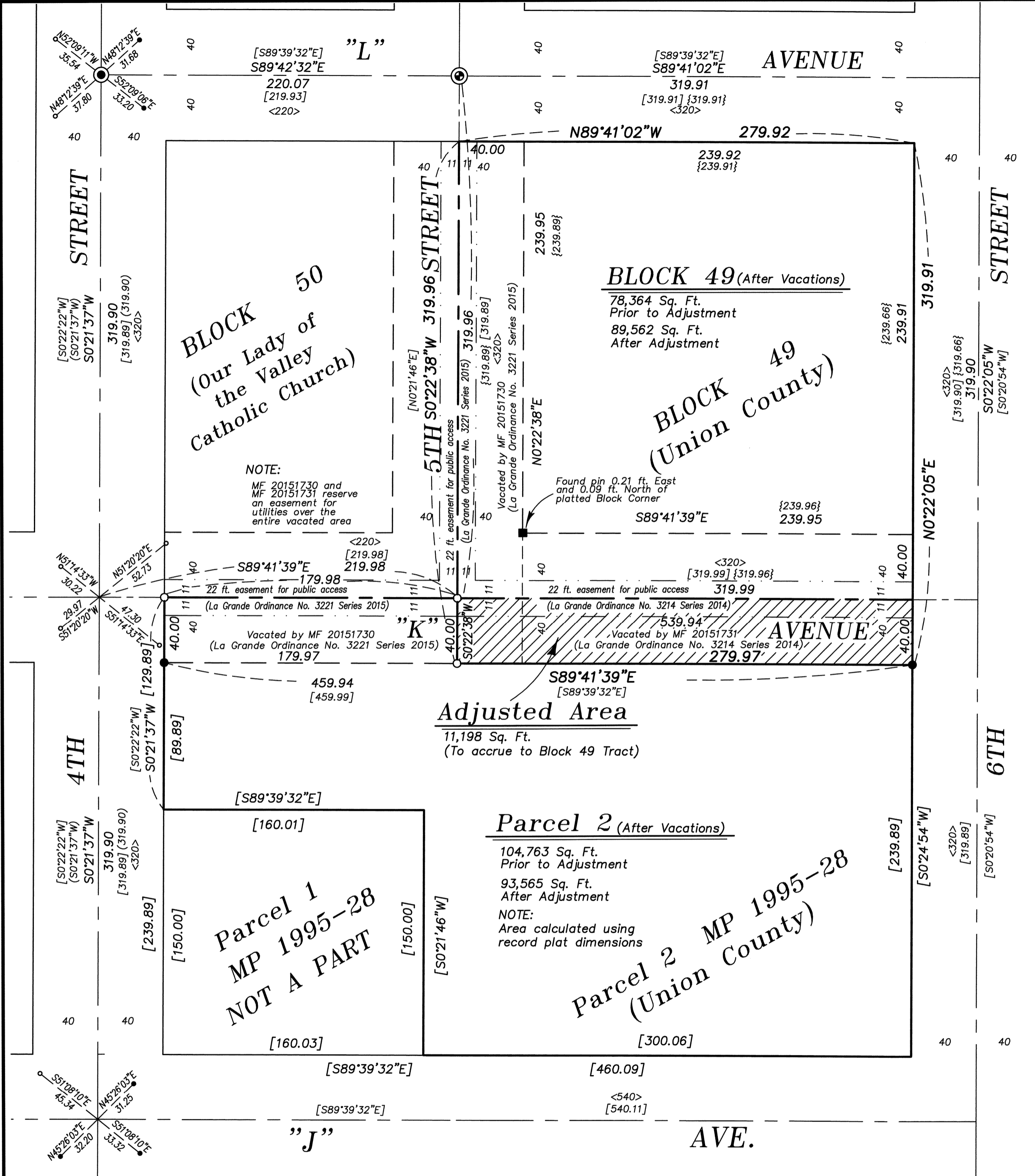
**DEED REFERENCES**  
 Volume 60 Page 17  
 Volume 79 Page 234  
 Microfilm Number 159969  
 Microfilm Number 960195  
 Microfilm Number 970117  
 Microfilm Number 970162  
 Microfilm Number 20033483  
 Microfilm Number 20151730  
 Microfilm Number 20151731  
 Microfilm Number 20151764

### NARRATIVE

This survey was done at the request of Hanley Jenkins. The purpose of this survey is to document a lot line adjustment between two tracts owned by Union County. Prior to the vacation of "K" Avenue and 5th Street, the Northerly County tract was Block 49 and the Southerly County tract was Parcel 2 of Minor Partition Plat Number 1995-28. With this adjustment, the Southerly portion of "K" Avenue as shown is to accrue to the Northerly tract. This configures the Northerly tract to be Block 49 and the East half of vacated 5th Street, along with the entire vacated "K" Avenue from the former intersection of 5th and "K" to the East line of Block 49. I place the South line of "K" Avenue by the found monuments of Minor Partition Plat 1995-28. The intersection of 5th and "L" was recovered as shown. I locate the centerline of K Avenue 40 ft. North of the South line as placed. I locate the intersection of "K" and 5th at record distance of Minor Partition 1995-28 from 4th Street along the established centerline. I establish the intersection of 6th and "K" along this line at record distance of the partition plat also. I then establish the intersection of 6th and "L" by distance-distance intersection using the record distance of the partition plat. I then locate the block lines by offsetting the centerlines as so established. I have prepared legal descriptions for the adjustment process. I find no other unusual conditions on this survey.

### LEGEND

- Found 5/8" iron pin (disturbed) set by Survey Number 13-76
- Found lead plug with brass screw set by Survey Number 18-89 (1922 monumentation of La Grande)
- ⊙ Found crosses on manhole rim set by Survey Number 18-89 (1922 monumentation of La Grande)
- Found 5/8" iron pin with plastic cap marked "APA" set by Minor Partition Plat Number 1995-028
- ⊙ Found 2 1/2" brass cap set by Survey Number 028-2005
- Found lead plug with brass screw set by Survey Number 028-2005
- Set 5/8"x30" iron pin with plastic cap marked "BGB SURVEY MARKER"
- — — Centerline
- — — Easement Line
- — — Original Platted Block Line
- { } Record information of Survey Number 13-76
- < > Record information of Survey Number 18-89 (1922 monumentation of La Grande)
- [ ] Record information of Survey Number Minor Partition Plat Number 1995-028
- ( ) Record information of Survey Number 028-2005



### CITY APPROVAL

Approved as a Lot Line Adjustment this 16<sup>th</sup> day of July, 2015.

Michael J. Boquist  
 City of La Grande Planner

REGISTERED PROFESSIONAL LAND SURVEYOR

OREGON JULY 17, 1986  
 RICK G. ROBINSON  
 2219

Renewal Date: Dec. 31, 2016

UNION COUNTY SURVEYOR

Date Received 7/16/15

Date Filed 7/16/15

By [Signature]

File No. 042-2015

BAGETT, GRIFFITH & BLACKMAN  
 2006 Adams Avenue, LaGrande, Oregon  
 Map of Survey

LOT LINE ADJUSTMENT  
 Situate in Blocks 42 and 49 of Chaplin's Addition To La Grande, Supplemental Plat

UNION COUNTY, OREGON		
SURVEYED FOR	Union County	
SURVEYED BY	R.G.R.	7/15
Scale: 1" = 50'	Drawn by: R.G.R.	7/15

SURVEY NUMBER 042-2015