

BASIS OF BEARING

True Geodetic North at the corner to Sections 19, 20, 29 and 30, Township 1 South, Range 40 East, of the Willamette Meridian, as determined by GPS observation.

SCALE: 1"=1000'

LEGEND

- Found 2 1/2" iron pipe (unless otherwise noted) with 2 1/2" brass cap, set by Survey Number 57-81
- Found monument as noted, marked as per Union County Monumentation Records
- ⊙ Found 2 1/2" aluminum pipe with 2 1/2" aluminum cap, marked as per Union County Monumentation Records, set by Survey Number 039-2004
- ⊙ Set 2 1/2" x 30" aluminum pipe with 2 1/2" aluminum cap, marked as per Union County Monumentation Records, filed separately
- Set 5/8" x 30" iron pin with 2 1/2" aluminum cap, marked as per Union County Monumentation Records, filed separately
- { } Record measurement as per Survey Number 57-81
- < > Record measurement as per Survey Number 039-2004
- [] Record measurement as per Survey Number 042-2004
- () Record measurement as per field notes of GLO Contract No. 450, executed by Henry Meldrum, dated June 11, 1882

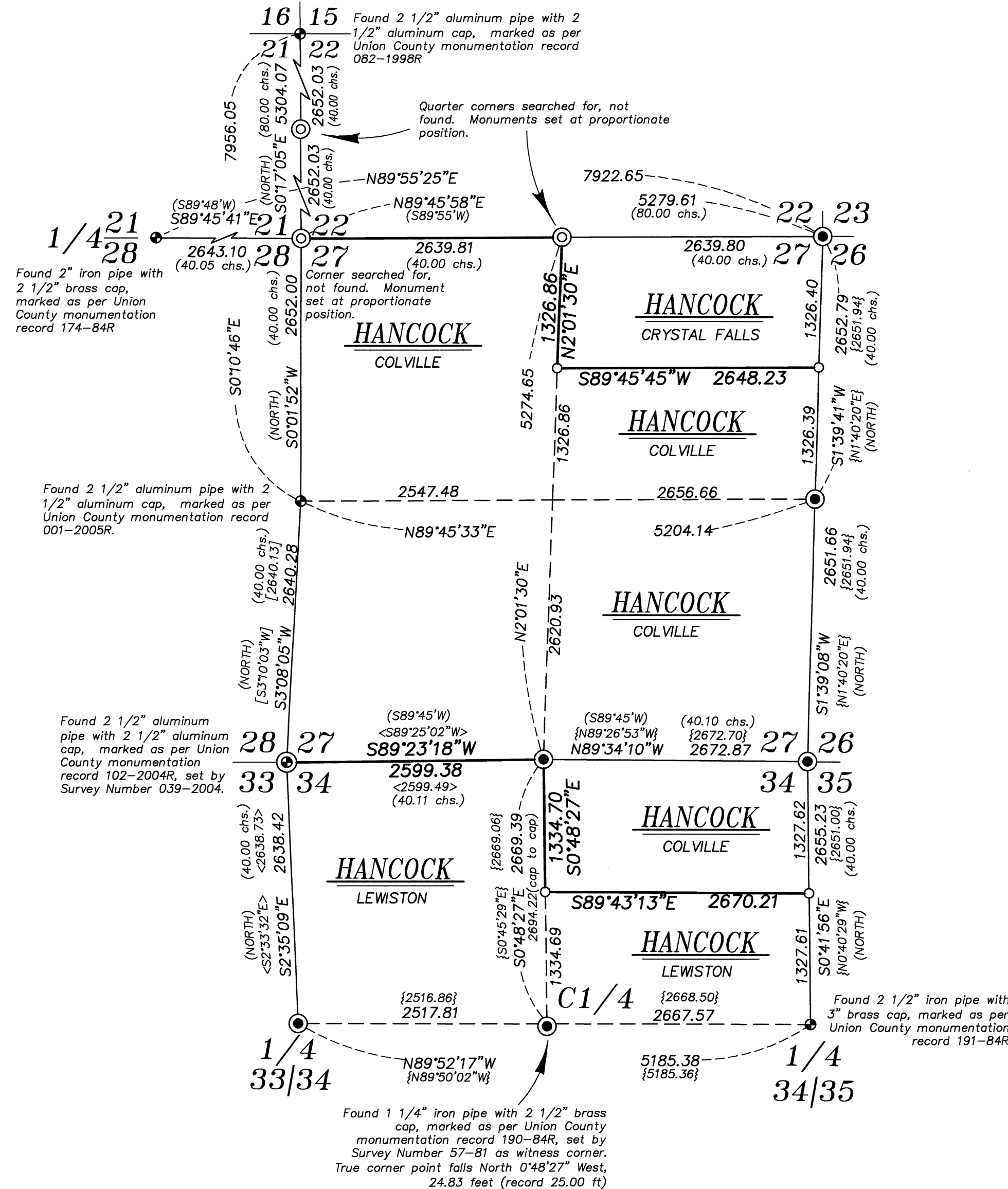
REFERENCE MATERIAL

Field notes of GLO contract number 450, executed by Henry Meldrum, dated June 11, 1882
 Union County Monumentation Records
 Survey Number 57-81
 Survey Number 039-2004
 Survey Number 042-2004
 Partition Plat Number 20120011T
 Partition Plat Number 20130001T

DEED REFERENCES
 Microfilm Document Number 20134275
 Microfilm Document Number 20134270

NARRATIVE

This survey was done at the request of Patrick Marolla, on behalf of Hancock Forest Management, land manager for the land shown. Mr. Marolla wanted the corners set along the portion of the property as shown in preparation for a timber harvest. I recover the monuments as shown hereon. I find and accept the monuments as shown hereon. I could find no remaining evidence of the original corners at the corner common to sections 21, 22, 27 and 28, or the South and West quarter corner positions of Section 22. I use proportionate measurement to place these corner positions. I hold the witness corner set at the Center quarter of Section 34 for line and intersect the line between the East and West quarter corners to establish the true Center quarter position. I further subdivide the section as per BLM Manual of Instructions 2009. I find no other unusual conditions with this survey.



UNION COUNTY
 SURVEYOR
 Date Received 6/26/15
 Date Filed 6/26/15
 By [Signature]
 File No. 041-2015

REGISTERED
 PROFESSIONAL
 LAND SURVEYOR
 [Signature]
 OREGON
 JUNE 2, 2010
 JEFFREY S. HSU
 83571
 Renewal Date: June 30, 2017

| | |
|---|------------------------------|
| BAGETT, GRIFFITH & BLACKMAN 2006 Adams Avenue, LaGrande, Oregon Map of Survey | |
| Situate in Section 27 and 34, Township 1 South, Range 40 East of the Willamette Meridian | |
| UNION COUNTY, OREGON | |
| SURVEYED FOR | Hancock Forest Management |
| SURVEYED BY | J. S. H. |
| Scale: 1"=1000' | Drawn by: J. S. H. June 2015 |