

LOT LINE ADJUSTMENT

BASIS OF BEARING

Solar observation taken at the Southwest corner of Section 15, Township 3 South, Range 40 East of the Willamette Meridian.

SCALE: 1" = 60'

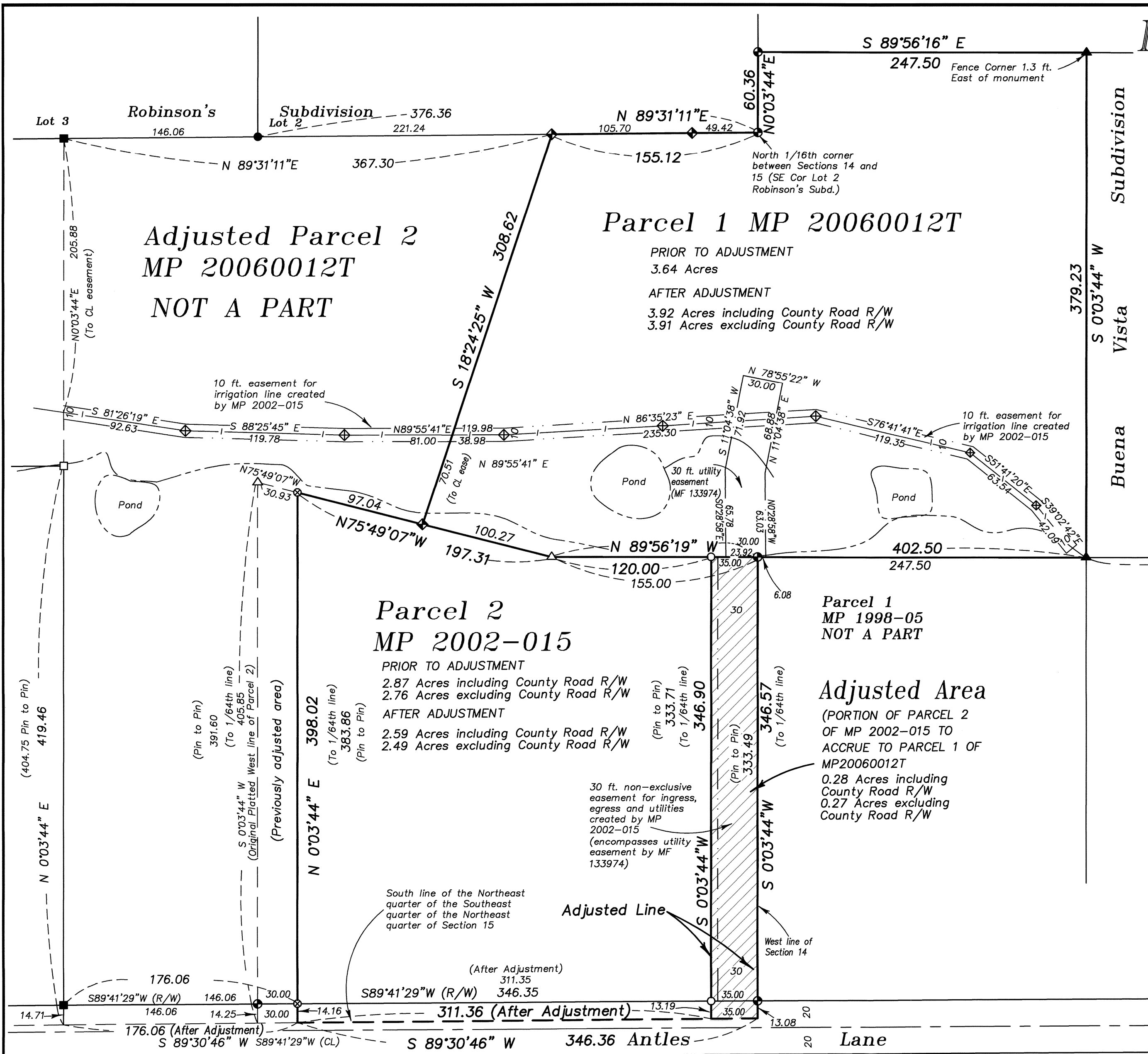
REFERENCE MATERIAL

Plat of Robinson's Subdivision
 Plat of Buena Vista Subdivision
 Survey Number 29-89
 Survey Number 017-2015
 Survey Number 019-2015
 Minor Partition Plat Number 1998-05
 Minor Partition Plat Number 1998-26
 Minor Partition Plat Number 1999-003
 Minor Partition Plat Number 2002-015
 Minor Partition Plat Number 20060012T
 Deed Microfilm Number 133974
 Deed Microfilm Number 20150801
 Deed Microfilm Number 20151756

LEGEND

- Found 5/8" iron pin with plastic cap marked "BGA SURVEY MARKER" set by the plat of Robinson's Subdivision
- ⊙ Found 5/8" iron pin with plastic cap marked "BGA SURVEY MARKER" set by Survey Number 29-89
- Found 5/8" iron pin with plastic cap marked "BGB SURVEY MARKER" set by Minor Partition Plat Number 1998-26
- ▲ Found 5/8" iron pin with plastic cap marked "BGA SURVEY MARKER" set by the Plat of Buena Vista Subdivision
- △ Found 5/8" iron pin with plastic cap marked "BGB SURVEY MARKER" set by Minor Partition Plat Number 2002-015
- ◆ Found 5/8" iron pin with plastic cap marked "BGB SURVEY MARKER" set by Minor Partition Plat Number 20060012T
- Found 5/8" iron pin with plastic cap marked "BGB SURVEY MARKER" set by Survey Number 017-2015
- ⊗ Found 5/8" iron pin with plastic cap marked "BGB SURVEY MARKER" set by Survey Number 019-2015
- Set 5/8"x30" iron pin with plastic cap marked "BGB SURVEY MARKER"
- ⊕ Irrigation Riser
- |— Irrigation Line
- - - - - Easement Line
- - - - - Creek or Pond

Adjusted area--Portion of Parcel 2 of Minor Partition Plat Number 2002-015 to accrue to Parcel 1 of Minor Partition Plat Number 20060012T



NARRATIVE

This survey was done at the request of Ted Gilstrap, representing the Gilstrap Family LLC. The purpose of this survey is to adjust the common line between Parcel 1 of Minor Partition Plat Number 20060012T and Parcel 2 of Minor Partition Plat Number 2002-015, which was previously adjusted and documented by Survey Number 019-2015. The monumentation from previous surveys, partitions and subdivisions was recovered in place as shown. I place the adjusted line at the direction of Mr. Gilstrap, so as to capture an existing driveway across Parcel 2 of Partition Plat Number 2002-015 that serves Parcel 1 of Minor Partition Plat Number 20060012T. I have prepared the necessary legal descriptions for the lot line adjustment process with Union County. I find no unusual conditions on this survey.

REGISTERED
 PROFESSIONAL
 LAND SURVEYOR

 OREGON
 JULY 17, 1988
 RICK G. ROBINSON
 2219

Renewal Date: Dec. 31, 2016

UNION COUNTY
 SURVEYOR
 Date Received 6/15/15
 Date Filed 6/15/15
 By
 File No. 039-2015

BAGETT, GRIFFITH & BLACKMAN 2006 Adams Avenue, LaGrande, Oregon		
Map of Survey LOT LINE ADJUSTMENT		
Between the common lines of Parcel 1 of Partition Plat 20060012T and Parcel 2 of Partition Plat 2002-015, situated in the Northeast quarter of Section 15, Township 3 South, Range 40 East of the Willamette Meridian. UNION COUNTY, OREGON		
SURVEYED FOR	Gilstrap Family LLC	
SURVEYED BY	R.G.R.	6/15
Scale: 1" = 60'	Drawn by: R.G.R.	6/15

SURVEY NUMBER 039-2015