

NW¹/₄, NE¹/₄, SE¹/₄ & SW¹/₄ of Section 4, T.3S. R.38E. W.M.

NARRATIVE

THE PURPOSE OF THIS SURVEY IS TO DEFINE THE NEW RIGHT-OF-WAY BOUNDARY AND CONTROLLING CENTER LINES FOR PORTIONS OF MULHOLLAND DR., RIDDLE RD., AND 26TH STREET. LOCATED IN THE NE¹/₄, THE NW¹/₄, THE SW¹/₄ AND THE SE¹/₄ OF SEC. 4, T.3S., R.38E., W.M. IN THE CITY OF LA GRANDE, UNION COUNTY, OREGON. THIS RIGHT-OF-WAY WAS ACQUIRED BY THE OREGON DEPARTMENT OF TRANSPORTATION AS PART OF THE LA GRANDE CORRIDOR IMPROVEMENTS (PHASE 1) PROJECT THAT WAS CONSTRUCTED IN 2004. FOR THIS PURPOSE WE USED THE NETWORK OPTION AS DEFINED BY OREGON REVISED STATUTE (ORS) 209.155, PARAGRAPH 2B. THE MONUMENT RECOVERY PORTION, UNION COUNTY SURVEY No. 017-2003 (S4), WAS FILED IN MAY OF 2003. AS PART OF THIS SURVEY WE ALSO REPLACED 5 MONUMENTS OF RECORD THAT WERE NOT INCLUDED IN THE MONUMENT RECOVERY SURVEY AND WERE SET BY GPS USING STATION-OFFSET METHOD. THE FIELDWORK PERFORMED ON THIS SURVEY WAS DONE BETWEEN 7/30/2014 AND 12/02/2014.

THE GEOMETRY OF ODOT DWG.10B-18-32 (M1) WAS USED TO DEFINE THE CONTROLLING CENTER LINE AND RIGHT-OF-WAY ANGLE POINTS FOR THIS SURVEY. THE FALSE CALLS SHOWN AS EXTENDING INTO PUBLIC RIGHT-OF-WAY ON THIS PLAT ARE FROM THE DEED DESCRIPTIONS AND ODOT DWG.10B-18-32 (M1) AND WERE USED TO PREVENT ANY GAPS IN THE PROPERTY ACQUIRED USING THE CENTER LINE STRIP DESCRIPTION. NO MONUMENTS WERE SET AT THE TRUE RIGHT-OF-WAY INTERSECTION POINTS.

REFERENCES

OREGON DEPT. OF TRANSPORTATION (ODOT OR STATE HWY. DEPT. OR DIVISION) DWGS.:

- M1. DWG. No. 10B-18-0032, MARCH 2004 M3. DWG. No. 1R-04-0496, JUNE 1971
- M2. DWG. No. 9B-34-0015, APRIL 1990 M4. DWG. No. 8B-36-0003, MAY 1966

AS-CONSTRUCTED PLANS:

- 10V-275- LA GRANDE SEC. (10/1969) OLD OREGON TRAIL HWY., Sheet 8
- 24V-062- OLD OREGON TRAIL HWY. - ISLAND CITY SEC. (5/1992)
- 33V-102- ISLAND CITY STRIP (LA GRANDE) SEC. (1/2001)
- 38V-020- OR82: LA GRANDE COORIDOR TRANSPORTATION IMPROVEMENTS SEC. (1/2005)

UNION COUNTY SURVEYOR RECORDS (SURVEY OR CORNER RECORDS):

- | | | | |
|-----------------|------------------|------------------|------------------|
| S1. No.007-2008 | S6. No.037-2002 | S11. No.014-1992 | S16. No.064-1974 |
| S2. No.006-2006 | S7. No.036-2002 | S12. No.018-1987 | S17. No.087-1972 |
| S3. No.031-2005 | S8. No.007-1997 | S13. No.023-1986 | S18. No.050-1972 |
| S4. No.017-2003 | S9. No.031-1996 | S14. No.003-1978 | S19. No.003-1972 |
| S5. No.014-2003 | S10. No.059-1994 | S15. No.025-1977 | S20. No.042-1971 |

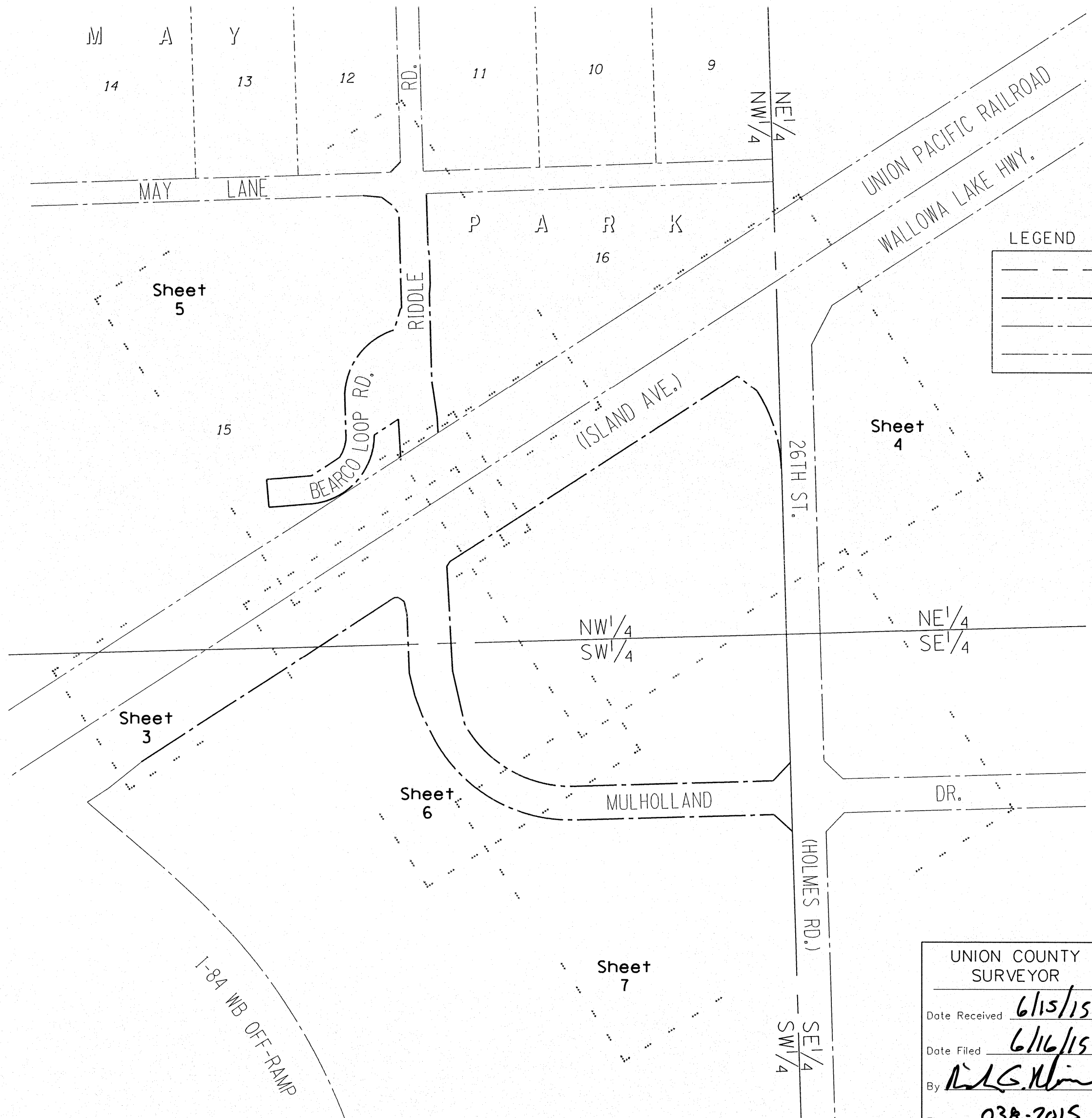
- P1. PARTITION PLAT No. 20140019T
- P2. PARTITION PLAT No. 20070009T

UNION COUNTY DEED RECORDS:

MICROFILM FILE No.	ODOT FILE No.	MICROFILM FILE No.	ODOT FILE No.	MICROFILM FILE No.	ODOT FILE No.
D1. MF 20040538;	7110001	D8. MF 20045878;	7110006	D15. MF 20051163;	7110021
D2. MF 20044760;	7110003	D9. MF 20046461;	7110019	D16. MF 20051886;	7110015
D3. MF 20044287;	7110018	D10. MF 20046898;	7110014	D17. MF 20052029;	7110002
D4. MF 20045066;	7110008	D11. MF 20046899;	7110007	D18. MF 20054832;	7110010
D5. MF 20045433;	7110020	D12. MF 20046904;	7110009	D19. MF 20060555;	7110011
D6. MF 20045435;	7110012	D13. MF 20050056;	7110004	D20. MF 20066175;	7110016
D7. MF 20045754;	7110013	D14. MF 20050691;	7110017		

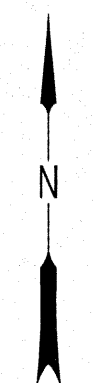
UNION COUNTY TAX LOT MAPS:

- 03S38E04AB, 03S38E04AC, 03S38E04BA, 03S38E04BD & 03S38E04CA



LEGEND

- SEC. QUARTER (1/4) DIVISION
- NEW R/W BOUNDARY
- - - EXTG. R/W BOUNDARY
- RAILROAD R/W BOUNDARY



SCALE = 1:2000

CONVERSION FACTOR:
0.3048 METERS = ONE INTERNATIONAL FOOT

UNION COUNTY SURVEYOR

Date Received 6/15/15

Date Filed 6/16/15

By [Signature]

File No. 038-2015

REGISTERED PROFESSIONAL LAND SURVEYOR

Robert Erich Butler

OREGON
JULY 25, 1995
ROBERT ERICH BUTLER
2733

EXPIRES 12/31/2015

SHEET INDEX

NARRATIVE, REFERENCES, OVERALL MAP, SHEET INDEX . . .	see Sheet 1
NETWORK POINTS SCHEMATIC & TABLE, EQUIPMENT USED, BASIS OF BEARING & COORDINATES, ABBREVIATIONS . . .	see Sheet 2
1ST DETAIL MAP, EASEMENT INSERT & POINT TABLES . . .	see Sheet 3
2ND DETAIL MAP & POINT TABLES . . .	see Sheet 4
3RD DETAIL MAP & POINT TABLES . . .	see Sheet 5
4TH DETAIL MAP & POINT TABLES . . .	see Sheet 6
5TH DETAIL MAP & POINT TABLES . . .	see Sheet 7

KEY NO.: 11827
DRAWN: F. J. SCHAD

OREGON DEPARTMENT OF TRANSPORTATION

RIGHT-OF-WAY BOUNDARY MONUMENTATION MAP
LA GRANDE CORRIDOR IMPROVEMENTS (PHASE 1)
WALLOWA LAKE HWY. NO. 10 (OREGON HWY. 82)
MILEPOINT 1.2
UNION COUNTY

ODOT REGION 5
3012 ISLAND AVE.
LA GRANDE, OR 97850

JUNE, 2015
SCALE = 1: 2000
Sheet 1 of 7 sheets

NW¹/₄, NE¹/₄, SE¹/₄ & SW¹/₄ of Section 4, T.3S. R.38E. W.M.

BASIS OF BEARING & COORDINATES

THE BASIS OF BEARING AND THE POSITION OF MONUMENTS WERE ESTABLISHED WITH A BEARING OF N. 70°50'06" E. 685.114m BETWEEN MONUMENTS NT4 AND NH5. THIS SURVEY UTILIZES THE ASSUMED COORDINATES DERIVED FROM A TRANSFORMATION USING FOUND MONUMENTS FROM COUNTY SURVEY NO. 017-2003. THIS SURVEY ALSO UTILIZES THE ASSUMED COORDINATES FROM COUNTY SURVEY NO. 017-2003.

EQUIPMENT USED

THIS SURVEY WAS ACCOMPLISHED USING A LEICA GPS SYSTEM 1200 BASE AND A LEICA GNSS ROVER.

ABBREVIATIONS

ALUM. CAP = ALUMINUM CAP	FD. = FOUND	PL. CAP = PLASTIC CAP
BNDRY. = BOUNDARY	ft = FEET	PNT. = POINT
CALC. = CALCULATED	HWY. = HIGHWAY	R/W = RIGHT-OF-WAY
DIAM. = DIAMETER	m = METERS	SEC. = SECTION
DWG. = DRAWING	mm = MILLIMETERS	SE1/4 = S.E. QUARTER
E./W. = EAST/WEST	MKD. = MARKED	SHT. = SHEET
EASE. = EASEMENT	MON. = MONUMENT	SW1/4 = S.W. QUARTER
EB/WB = EASTBOUND/ WESTBOUND	N./S. = NORTH/SOUTH	T./R. = TOWNSHIP/RANGE
EXTG. = EXISTING	NE1/4 = N.E. QUARTER	W.M. = WILLAMETTE MERIDIAN
	NW1/4 = N.W. QUARTER	W/ = WITH

NETWORK POINT COORDINATE TABLE

PNT. NO.	ASSUMED COORDINATES NORTHING (m) EASTING (m)	DESCRIPTION
NH3	10,665.814 20,974.642	FD. 16mm (5/8") IRON ROD W/ 38mm (1-1/2") ALUM. CAP MKD.: "O.S.H.D.", 150mm (6") BEHIND CURB, [S10]
NH5	10,463.738 20,965.130	FD. 64mm (2-1/2") BRASS CAP MKD.: "UNION COUNTY SURVEYOR", "T3S, R38E, C1/4, S4, 2002, OPLS 991", [S5]
NH12	10,215.481 20,820.806	FD. 16mm (5/8") IRON ROD W/ 32mm (1-1/4") ALUM. CAP MKD.: "NH12, O.D.O.T.", ORANGE CARSONITE POST 1m (3.3') SOUTHERLY [S4]
NT4	10,238.821 20,317.987	FD. 70mm (2-3/4") BRASS CAP IN CURB OF WALLOWA LAKE HWY., REFERENCE PNT. FOR EB OFF-RAMP & WB ON-RAMP [M4&S4]
1016	10,947.201 20,749.474	FD. 16mm (5/8") IRON ROD W/ YELLOW PL. CAP MKD.: "BGB", [S16]
1065	10,401.343 20,765.155	FD. YELLOW PL. CAP MKD.: "BGB", [S8]

LEGEND

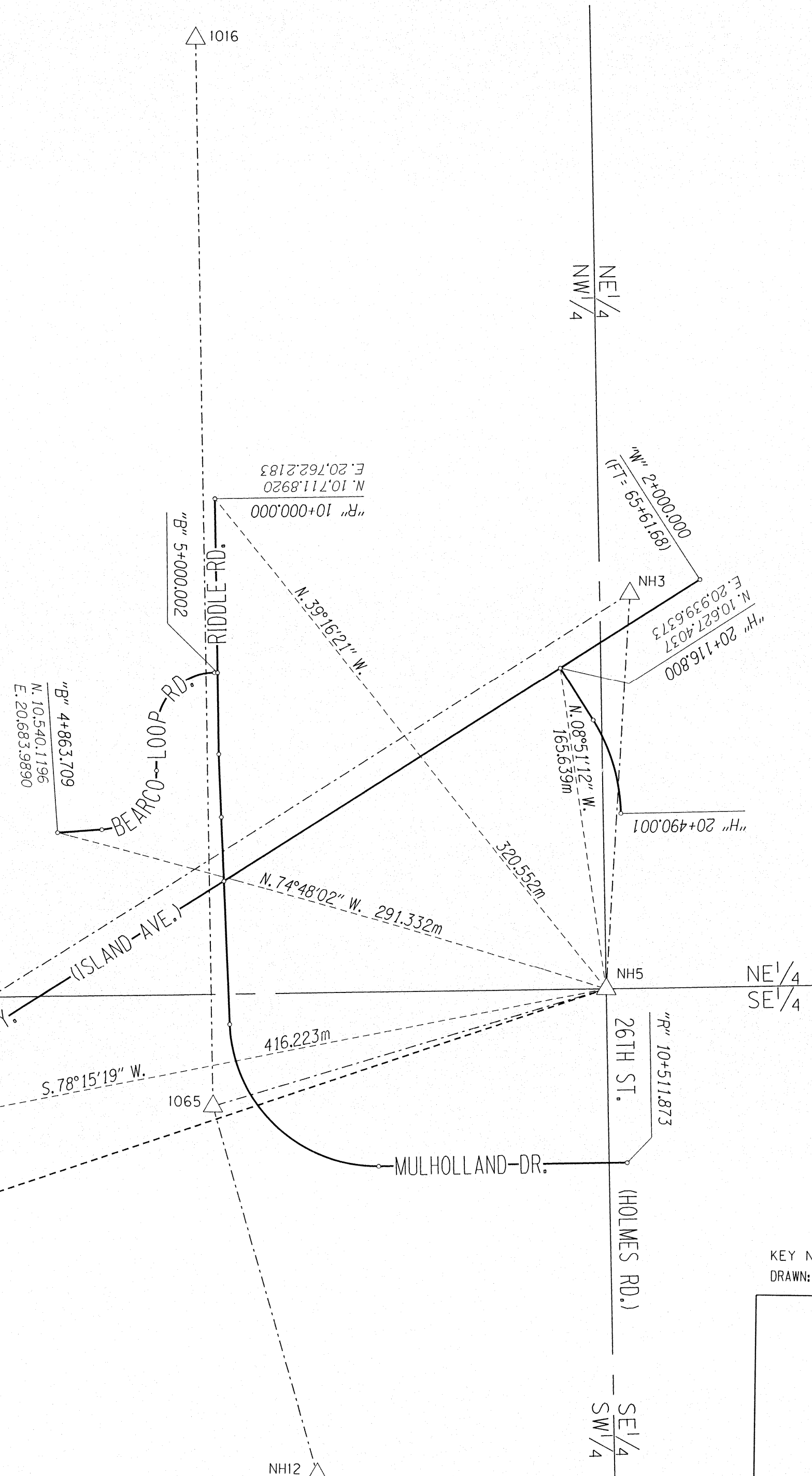
- △ FOUND MON. USED AS NETWORK PNT.
- SEC. QUARTER (1/4) DIVISION
- R/W CENTERLINES
- - - OBSERVATION LINES
- - - BEARING TIE
- [] = SEE SHT. I REFERENCES

N

SCALE = 1:2000

0 20 40 60 80 100
METRIC

CONVERSION FACTOR:
0.3048 METERS = ONE
INTERNATIONAL FOOT



R/W ALIGNMENT NAMES

- "B" = BEARCO LOOP ROAD
- "H" = 26TH STREET (HOLMES RD.)
- "R" = MULHOLLAND DRIVE & RIDDLE ROAD
- "RR" = UNION PACIFIC RAILROAD (JOSEPH BRANCH)
- "W" = WALLOWA LAKE HWY. NO. 10 (ISLAND AVE.) (OR82)

BASE BEARING
N. 70°50'06" E. 685.114m
N. 70°50'11" E. 685.132m S4

UNION COUNTY SURVEYOR

Date Received 6/15/15

Date Filed 6/16/15

By *Robert E. Butler*

File No. 038-2015

REGISTERED PROFESSIONAL LAND SURVEYOR

Robert E. Butler

OREGON
JULY 25, 1995
ROBERT ERICH BUTLER
2733

EXPIRES 12/31/2015

KEY NO.: 11827
DRAWN: F. J. SCHAD

ODOT REGION 5
3012 ISLAND AVE.
LA GRANDE, OR 97850

OREGON DEPARTMENT OF TRANSPORTATION

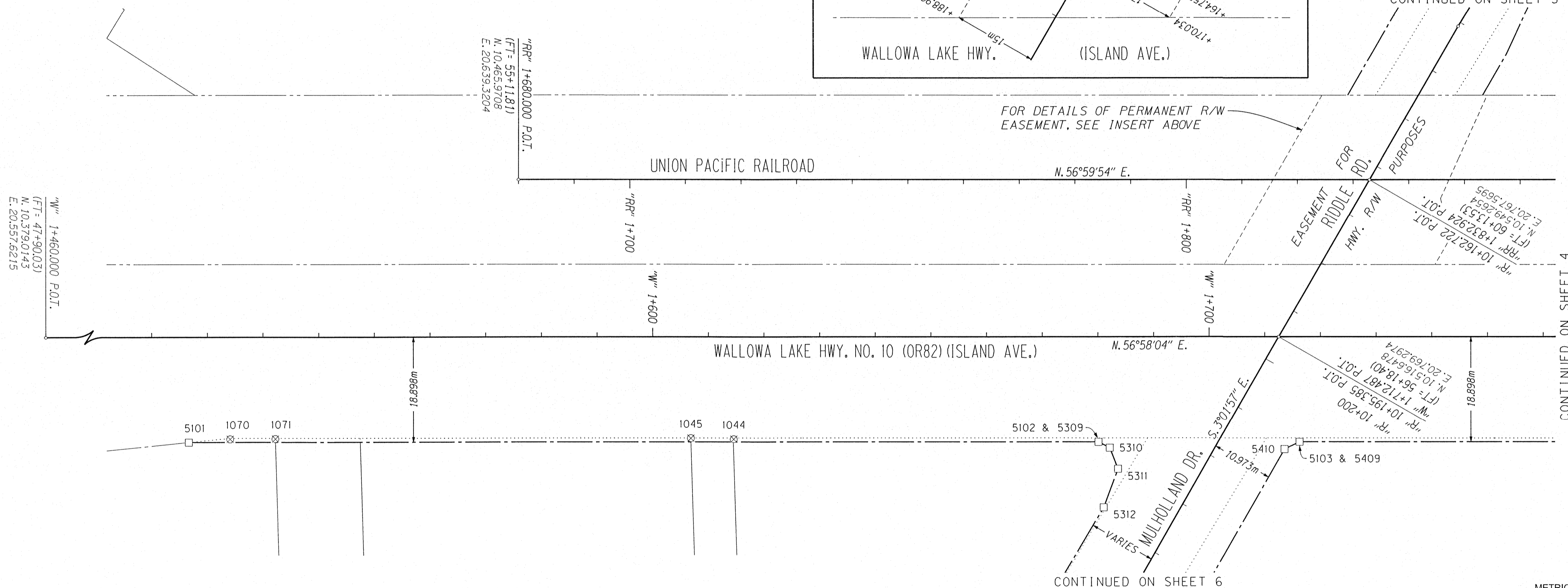
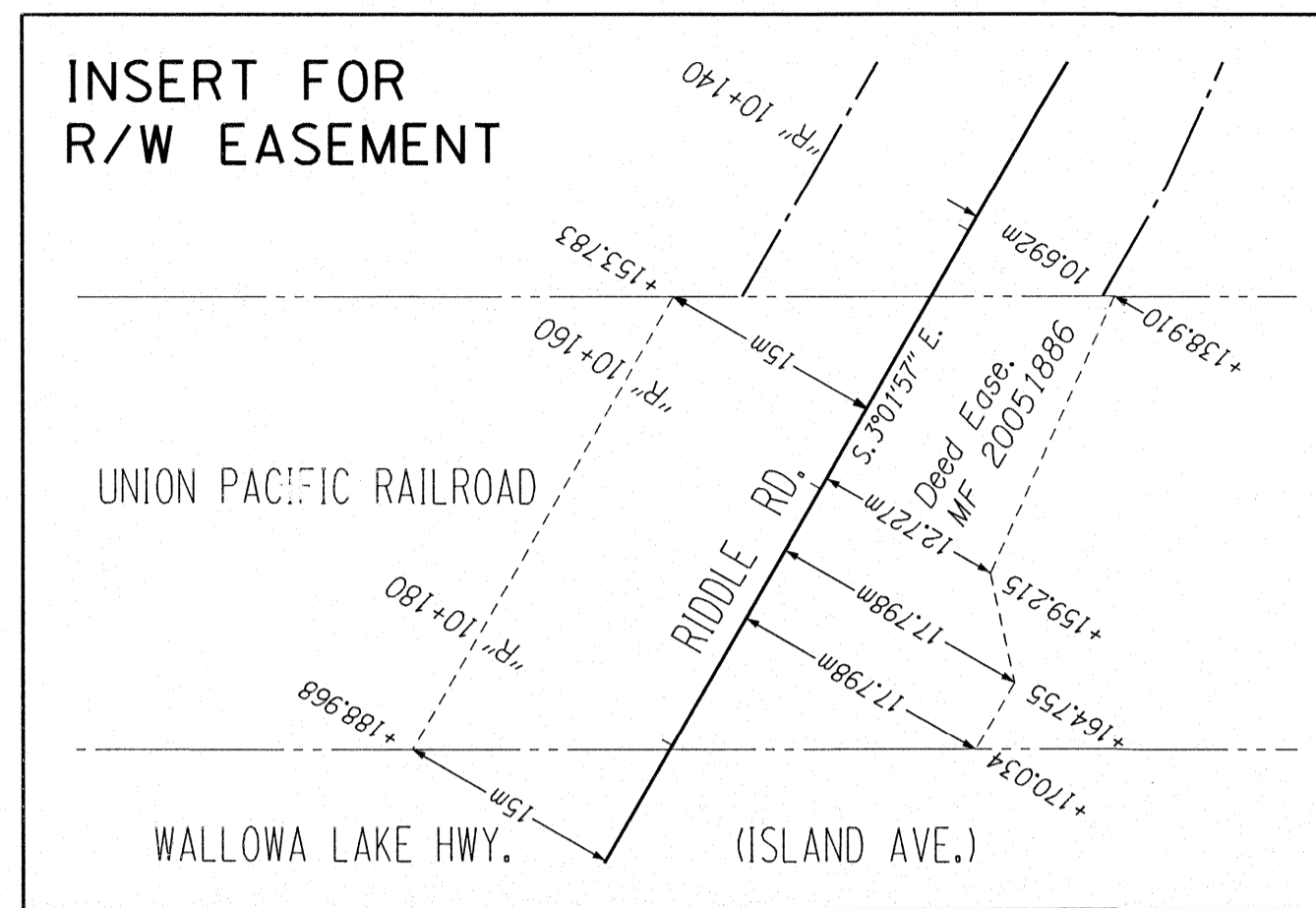
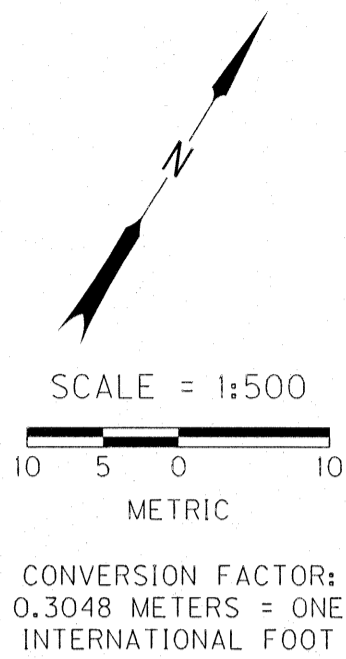
RIGHT-OF-WAY BOUNDARY MONUMENTATION MAP
LA GRANDE CORRIDOR IMPROVEMENTS (PHASE I)
WALLOWA LAKE HWY. NO. 10 (OREGON HWY. 82)
MILEPOINT 1.2
UNION COUNTY

JUNE, 2015
SCALE = 1:2000
Sheet 2 of 7 sheets

SW¹/₄ & NW¹/₄ of Section 4, T.3S. R.38E. W.M.

LEGEND

- CALCULATED POINT, NO MON.
- ⊗ LOCATION OF DESTROYED MON. (FOR POSITION & DESCRIPTION SEE SAME PNT. No. ON [S4])
- PROPERTY BOUNDARY
- ⋯ PREVIOUS PROPERTY BNDRY.
- R/W EASEMENT BOUNDARY
- R/W CENTERLINES
- NEW R/W BOUNDARY
- EXTG. R/W BOUNDARY
- RAILROAD R/W BNDRY.



RIGHT-OF-WAY LOCATION TABLE

PNT. NO.	ASSUMED COORDINATES NORTHING (m) EASTING (m)	STATION (m)	OFFSET (m)	DESCRIPTION
5101	10,394.053 20,615.419	"W" 1+516.653	18.898 RT	CALCULATED ONLY, NO MON. SET
5102	10,483.131 20,752.418	"W" 1+680.066	18.898 RT	CALCULATED ONLY, NO MON. SET
5103	10,502.844 20,782.736	"W" 1+716.229	18.898 RT	CALCULATED ONLY, NO MON. SET
5309	10,483.131 20,752.418	"R" 10+227.963	18.628 RT	IS PNT. 5102 W/ OFFSET FROM "R"
5310	10,483.360 20,754.694	"R" 10+227.855	16.344 RT	CALCULATED ONLY, NO MON. SET
5311	10,481.009 20,757.970	"R" 10+230.375	13.196 RT	CALCULATED ONLY, NO MON. SET
5312	10,473.877 20,759.546	"R" 10+237.581	12.000 RT	CALCULATED ONLY, NO MON. SET
5409	10,502.844 20,782.736	"R" 10+209.881	12.690 LT	IS PNT. 5103 W/ OFFSET FROM "R"
5410	10,500.271 20,781.153	"R" 10+212.367	10.973 LT	CALCULATED ONLY, NO MON. SET

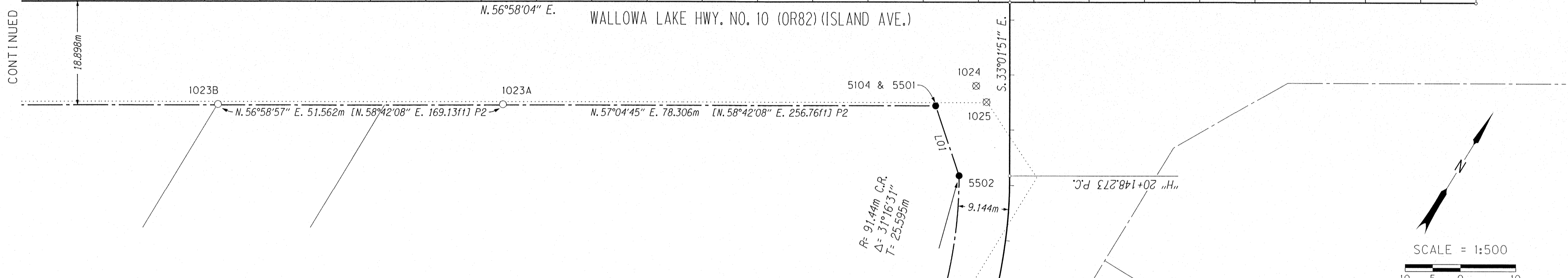
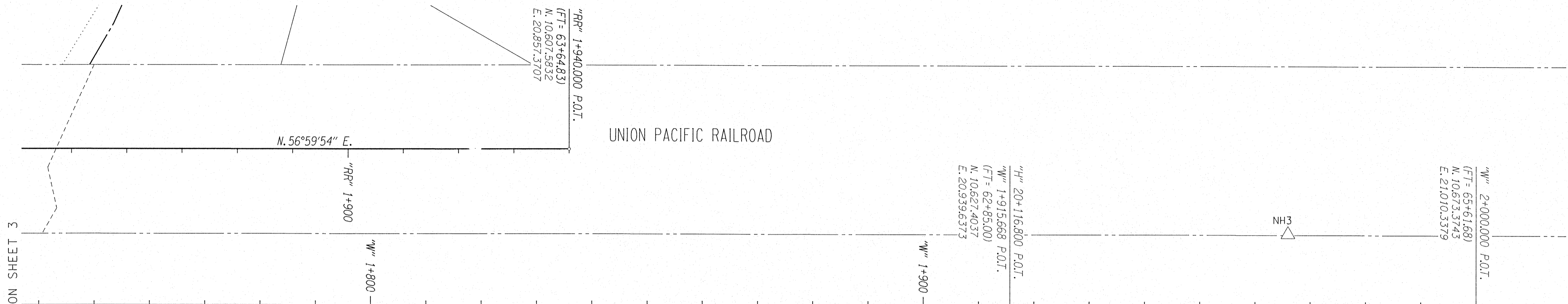
UNION COUNTY SURVEYOR
 Date Received 6/15/15
 Date Filed 6/16/15
 By Neil G. Miller
 File No. 038-2015

REGISTERED PROFESSIONAL LAND SURVEYOR
 Robert E. Butler
 OREGON
 JULY 25, 1995
 ROBERT ERICH BUTLER
 2733
 EXPIRES 12/31/2015

KEY NO.: 11827
 DRAWN: F. J. SCHAD

OREGON DEPARTMENT OF TRANSPORTATION
 RIGHT-OF-WAY BOUNDARY MONUMENTATION MAP
 LA GRANDE CORRIDOR IMPROVEMENTS (PHASE I)
 WALLOWA LAKE HWY. NO. 10 (OREGON HWY. 82)
 MILEPOINT 1.2
 UNION COUNTY
 ODOT REGION 5
 3012 ISLAND AVE.
 LA GRANDE, OR 97850
 JUNE, 2015
 SCALE = 1 : 500
 Sheet 3 of 7 sheets

NW¹/₄ & NE¹/₄ of Section 4, T.3S. R.38E. W.M.



LEGEND

○ FOUND MONUMENTS	— R/W CENTERLINES
△ FOUND MON. USED AS NETWORK PNT.	— NEW R/W BOUNDARY
□ CALCULATED POINT, NO MON.	— EXTG. R/W BOUNDARY
● SET 16mm X 762mm (5/8" X 30") IRON ROD W/ 32mm (1-1/4") ALUM. CAP MKD.: "ODOT, LS 2733"	— RAILROAD R/W BNDRY.
⊗ LOCATION OF DESTROYED MON. (FOR POSITION & DESCRIPTION SEE SAME PNT. No. ON [S4])	— R/W EASEMENT BOUNDARY
[] = SEE SHT. 1 REFERENCES	— PROPERTY BOUNDARY
	— PREVIOUS PROPERTY BNDRY.

RECOVERED MONUMENT TABLE

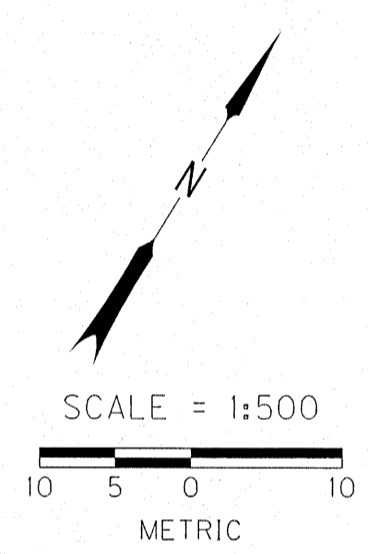
PNT. NO.	ASSUMED COORDINATES NORTHING (m) EASTING (m)	DESCRIPTION
NH3	10,665.814 20,974.642	FD. 16mm (5/8") IRON ROD W/ 38mm (1-1/2") ALUM. CAP MKD.: "O.S.H.D.", 150mm (6") BEHIND CURB, [S10]
1023A	10,561.690 20,872.961	FD. 16mm (5/8") IRON ROD W/ YELLOW PL. CAP MKD.: "BGB" [P2]
1023B	10,533.594 20,829.726	FD. BRASS SCREW (PHILLIPS) W/ WASHER MKD.: "OPLS 991" [P2]
1304	10,410.087 20,966.579	FD. 16mm (5/8") IRON ROD, 356mm (14") BELOW SURFACE [S2]

RIGHT-OF-WAY LOCATION TABLE

PNT. NO.	ASSUMED COORDINATES NORTHING (m) EASTING (m)	STATION (m)	OFFSET (m)	DESCRIPTION
5104	10,604.248 20,938.693	"W" 1+902.254	18.898 RT	SET IRON ROD W/ ALUM. CAP
5501	10,604.248 20,938.693	"H" 20+135.698	13.414 RT	IS PNT. 5104, W/ OFFSET FROM "H"
5502	10,596.034 20,949.126	"H" 20+148.272	9.144 RT	SET IRON ROD W/ ALUM. CAP
5503	10,553.696 20,962.389	"H" 20+198.186	9.144 RT	SET IRON ROD W/ ALUM. CAP

LINE TABLE

NO.	BEARING & LENGTH
L01	S. 51°47'11" E. 13.278m [S. 50°02'27" E. 43.57f1] P2&S2
L02	S. 17°23'38" E. 44.367m [S. 15°39'31" E. 145.56f1] P2&S2



CONVERSION FACTOR:
0.3048 METERS = ONE INTERNATIONAL FOOT

UNION COUNTY SURVEYOR
Date Received 6/15/15
Date Filed 6/16/15
By Neil G. Mann
File No. 038-2015

REGISTERED PROFESSIONAL LAND SURVEYOR
Robert E. Butler
OREGON
JULY 25, 1995
ROBERT ERICH BUTLER
2733
EXPIRES 12/31/2015

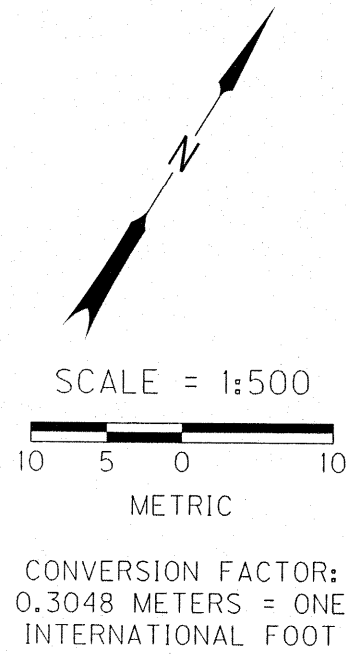
KEY NO.: 11827
DRAWN: F. J. SCHAD

OREGON DEPARTMENT OF TRANSPORTATION
RIGHT-OF-WAY BOUNDARY MONUMENTATION MAP
LA GRANDE CORRIDOR IMPROVEMENTS (PHASE 1)
WALLOWA LAKE HWY. NO. 10 (OREGON HWY. 82)
MILEPOINT 1.2
UNION COUNTY

ODOT REGION 5
3012 ISLAND AVE.
LA GRANDE, OR 97850
JUNE, 2015
SCALE = 1:500
Sheet 4 of 7 sheets

NW 1/4 of Section 4, T.3S. R.38E. W.M.

- LEGEND**
- FOUND MONUMENTS
 - CALCULATED POINT, NO MON.
 - ⊗ LOCATION OF DESTROYED MON. (FOR POSITION & DESCRIPTION SEE SAME PNT. NO. ON [S4])
 - R/W CENTERLINES
 - - - NEW R/W BOUNDARY
 - - - EXTG. R/W BOUNDARY
 - - - RAILROAD R/W BNDRY.
 - - - R/W EASEMENT BOUNDARY
 - PROPERTY BOUNDARY
 - - - PREVIOUS PROPERTY BNDRY.
 - (A.P.L.) = ALONG PROPERTY LINE
 - [] = SEE SHT. 1 REFERENCES



RECOVERED MONUMENT TABLE

PNT. NO.	ASSUMED COORDINATES	DESCRIPTION
	NORTHING (m) EASTING (m)	[] = SEE SHT. 1 REFERENCES
1046	10,614.589 20,797.978	FD. 19mm (3/4") IRON PIPE, 0.3m SOUTHERLY OF EAST-WEST FENCE LINE, [1/2" PIPE PER S18]

RIGHT-OF-WAY LOCATION TABLE

PNT. NO.	ASSUMED COORDINATES	STATION (m)	OFFSET (m)	DESCRIPTION
	NORTHING (m) EASTING (m)			
5001	10,720.041 20,755.944	N/A	N/A	CALCULATED ONLY, NO MON. SET
5002	10,714.362 20,750.605	N/A	N/A	CALCULATED ONLY, NO MON. SET
5301	10,701.668 20,735.646	"R" 10+009.476	26.848 RT	CALCULATED ONLY, NO MON. SET
5303	10,700.700 20,745.693	"R" 10+010.725	16.832 RT	CALCULATED ONLY, NO MON. SET
5304	10,696.377 20,751.713	"R" 10+015.214	10.935 RT	CALCULATED ONLY, NO MON. SET
5305	10,691.686 20,755.161	"R" 10+020.000	7.620 RT	CALCULATED ONLY, NO MON. SET
5306	10,640.678 20,756.590	"R" 10+071.029	7.620 RT	CALCULATED ONLY, NO MON. SET
5307	10,580.456 20,754.902	"R" 10+130.905	11.000 RT	CALCULATED ONLY, NO MON. SET
5308	10,559.914 20,755.990	"R" 10+151.477	11.000 RT	CALCULATED ONLY, NO MON. SET
5401	10,702.812 20,770.096	"R" 10+009.297	7.620 LT	CALCULATED ONLY, NO MON. SET
5402	10,674.120 20,770.899	"R" 10+038.000	7.620 LT	CALCULATED ONLY, NO MON. SET
5403	10,669.139 20,771.649	"R" 10+043.000	8.230 LT	CALCULATED ONLY, NO MON. SET
5404	10,654.145 20,772.069	"R" 10+058.000	8.230 LT	CALCULATED ONLY, NO MON. SET
5405	10,649.130 20,771.599	"R" 10+063.000	7.620 LT	CALCULATED ONLY, NO MON. SET
5406	10,601.604 20,772.930	"R" 10+110.545	7.620 LT	CALCULATED ONLY, NO MON. SET
5407	10,581.723 20,775.868	"R" 10+130.500	10.000 LT	CALCULATED ONLY, NO MON. SET
5408	10,573.117 20,776.320	"R" 10+139.367	10.000 LT	CALCULATED ONLY, NO MON. SET
5701	10,532.525 20,684.608	"B" 4+863.709	7.620 RT	CALCULATED ONLY, NO MON. SET
5702	10,534.365 20,707.180	"B" 4+886.355	7.620 RT	CALCULATED ONLY, NO MON. SET
5703	10,571.898 20,741.743	"B" 4+931.069	7.620 RT	CALCULATED ONLY, NO MON. SET
5801	10,547.714 20,683.370	"B" 4+863.709	7.620 LT	CALCULATED ONLY, NO MON. SET
5802	10,549.772 20,707.726	"B" 4+888.766	7.620 LT	CALCULATED ONLY, NO MON. SET
5803	10,559.612 20,722.854	"B" 4+913.666	7.620 LT	CALCULATED ONLY, NO MON. SET
5804	10,570.481 20,726.461	"B" 4+929.189	7.620 LT	CALCULATED ONLY, NO MON. SET
5805	10,594.433 20,725.762	"B" 4+953.252	8.000 LT	CALCULATED ONLY, NO MON. SET
5806	10,629.000 20,752.484	"B" 4+990.000	8.000 LT	CALCULATED ONLY, NO MON. SET
5807	10,640.660 20,755.980	"B" 4+994.205	18.581 LT	CALCULATED ONLY, NO MON. SET

NOTE:
FOR DETAILS OF PERMANENT EASEMENT FOR R/W PURPOSES, SEE INSERT ON SHEET 3.

KEY NO.: 11827
DRAWN: F. J. SCHAD



UNION COUNTY SURVEYOR
Date Received 6/15/15
Date Filed 6/16/15
By Robert E. Butler
File No. 038-2015

REGISTERED PROFESSIONAL LAND SURVEYOR
Robert E. Butler
OREGON JULY 25, 1995
ROBERT ERICH BUTLER 2733
EXPIRES 12/31/2015

OREGON DEPARTMENT OF TRANSPORTATION
RIGHT-OF-WAY BOUNDARY MONUMENTATION MAP
LA GRANDE CORRIDOR IMPROVEMENTS (PHASE I)
WALLOWA LAKE HWY. NO. 10 (OREGON HWY. 82)
MILEPOINT 1.2
UNION COUNTY

ODOT REGION 5
3012 ISLAND AVE.
LA GRANDE, OR 97850

JUNE, 2015
SCALE = 1:500
Sheet 5 of 7 sheets

CONTINUED ON SHEET 6

SW¹/₄ & NW¹/₄ of Section 4, T.3S. R.38E. W.M.

RECOVERED MONUMENT TABLE

PNT. NO.	ASSUMED NORTHING (m)	ASSUMED EASTING (m)	DESCRIPTION
1062	10,404.005	20,825.456	FD. 16mm (5/8") IRON ROD W/ 32mm (1-1/4") ALUM. CAP [S13]
1065	10,401.343	20,765.155	FD. YELLOW PL. CAP MKD.: "BGB", [S8]
1066	10,401.246	20,762.132	FD. 13mm (1/2") IRON ROD, 0.3m (11") BELOW GRAVEL SURFACE [S17]
1077	10,452.481	20,760.543	FD. 16mm (5/8") IRON ROD W/ NO CAP, [S20]
1300	10,402.801	20,799.165	FD. 16mm (5/8") IRON ROD W/ PL. CAP MKD.: "BGB", APPROX. 0.6m (2') BEHIND SIDEWALK [S2]
1304	10,410.087	20,966.579	FD. 16mm (5/8") IRON ROD, 356mm (14") BELOW SURFACE [S2]
2001	10,384.984	20,825.991	FD. 16mm (5/8") IRON ROD W/ PL. CAP MKD.: "BGB" [S1] (BEARS N. 74°42'09" W. 0.062m FROM CALC. POSITION)

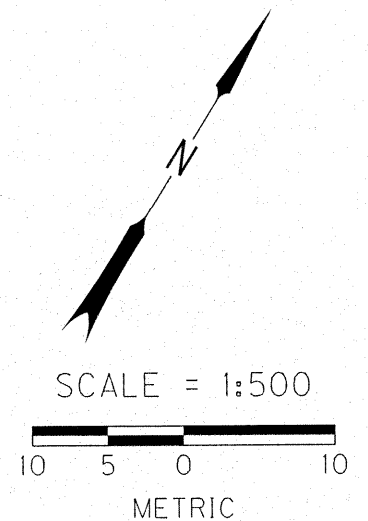
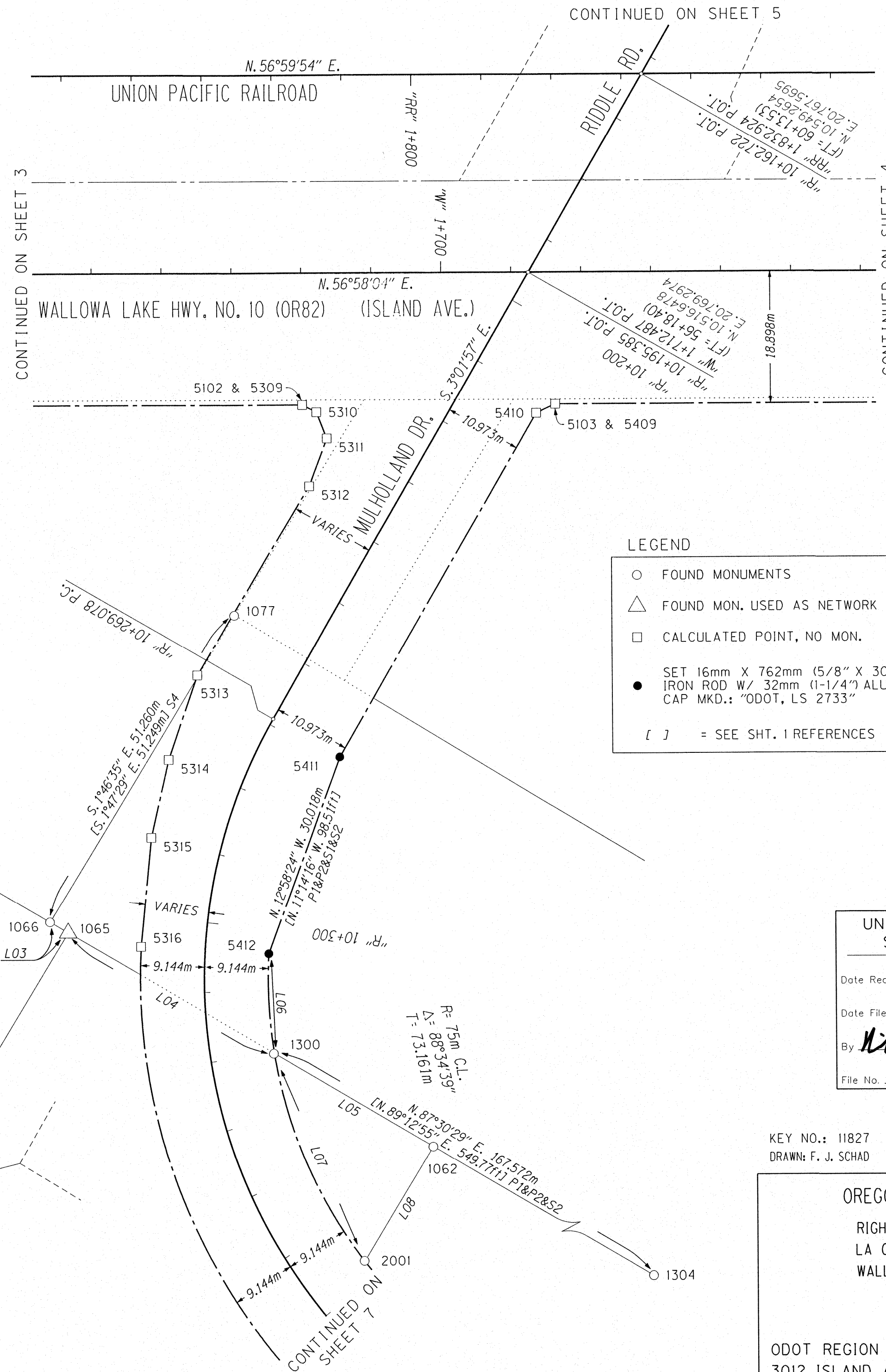
RIGHT-OF-WAY LOCATION TABLE

PNT. NO.	ASSUMED NORTHING (m)	ASSUMED EASTING (m)	STATION (m)	OFFSET (m)	DESCRIPTION
5102	10,483.131	20,752.418	"W" 1+680.066	18.898 RT	CALCULATED ONLY, NO MON. SET
5103	10,502.844	20,782.736	"W" 1+716.229	18.898 RT	CALCULATED ONLY, NO MON. SET
5309	10,483.131	20,752.418	"R" 10+227.963	18.628 RT	IS PNT. 5102 W/ OFFSET FROM "R"
5310	10,483.360	20,754.694	"R" 10+227.855	16.344 RT	CALCULATED ONLY, NO MON. SET
5311	10,481.009	20,757.970	"R" 10+230.375	13.196 RT	CALCULATED ONLY, NO MON. SET
5312	10,473.877	20,759.546	"R" 10+237.581	12.000 RT	CALCULATED ONLY, NO MON. SET
5313	10,442.398	20,760.713	"R" 10+269.078	12.500 RT	CALCULATED ONLY, NO MON. SET
5314	10,430.063	20,763.780	"R" 10+280.000	11.000 RT	CALCULATED ONLY, NO MON. SET
5315	10,419.331	20,767.729	"R" 10+290.000	10.000 RT	CALCULATED ONLY, NO MON. SET
5316	10,405.323	20,775.008	"R" 10+304.000	9.144 RT	CALCULATED ONLY, NO MON. SET
5409	10,502.844	20,782.736	"R" 10+209.881	12.690 LT	IS PNT. 5103 W/ OFFSET FROM "R"
5410	10,500.271	20,781.153	"R" 10+212.367	10.973 LT	CALCULATED ONLY, NO MON. SET
5411	10,443.639	20,784.153	"R" 10+269.078	10.973 LT	SET IRON ROD W/ ALUM. CAP
5412	10,414.387	20,790.892	"R" 10+304.000	9.144 LT	SET IRON ROD W/ ALUM. CAP

NOTE: MEASURED DISTANCES FOUND ON THIS SHEET ARE TO AND FROM PHYSICAL MONUMENTS ONLY, NOT CALCULATED POINTS.

LINE TABLE

NO.	BEARING & LENGTH
L03	N. 88°09'44" E. 3.025m [N. 89°56'18" E. 10.001f] S1 [N. 88°07'43" E. 3.032m] S4
L04	N. 87°32'43" E. 34.041m [N. 89°12'55" E. 111.68f] S1 [N. 89°12'55" E. 111.78f] P2&S2
L05	N. 87°22'41" E. 26.319m [N. 89°12'55" E. 86.12f] P1 [N. 89°12'55" E. 86.32f] S1
L06	N. 35°31'44" W. 14.236m [N. 34°13'44" W. 47.06f] P1&S1 [N. 34°16'19" W. 47.38f] P2&S2
L07	N. 56°24'33" W. 32.204m [N. 54°39'36" W. 105.89f] P1&S1 [N. 54°43'10" W. 105.65f] P2&S2
L08	N. 1°36'40" W. 19.029m [N. 0°03'42" W. 62.17f] P1 [S. 0°03'42" E. 62.42f] S1



LEGEND

○	FOUND MONUMENTS	—	R/W CENTERLINES
△	FOUND MON. USED AS NETWORK PNT.	- - -	NEW R/W BOUNDARY
□	CALCULATED POINT, NO MON.	- - - -	EXTG. R/W BOUNDARY
●	SET 16mm X 762mm (5/8" X 30") IRON ROD W/ 32mm (1-1/4") ALUM. CAP MKD.: "ODOT, LS 2733"	- - - - -	RAILROAD R/W BNDRY.
[]	= SEE SHT. 1 REFERENCES	- - - - -	R/W EASEMENT BOUNDARY
		—	PROPERTY BOUNDARY
		PREVIOUS PROPERTY BNDRY.

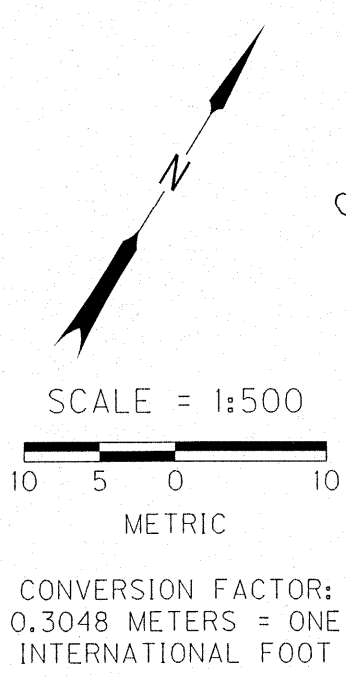
UNION COUNTY SURVEYOR
 Date Received 6/15/15
 Date Filed 6/16/15
 By M.L.G. [Signature]
 File No. 038-2015

REGISTERED PROFESSIONAL LAND SURVEYOR
Robert E. Butler
 OREGON
 JULY 25, 1995
 ROBERT ERICH BUTLER
 2733
 EXPIRES 12/31/2015

KEY NO.: 11827
 DRAWN: F. J. SCHAD

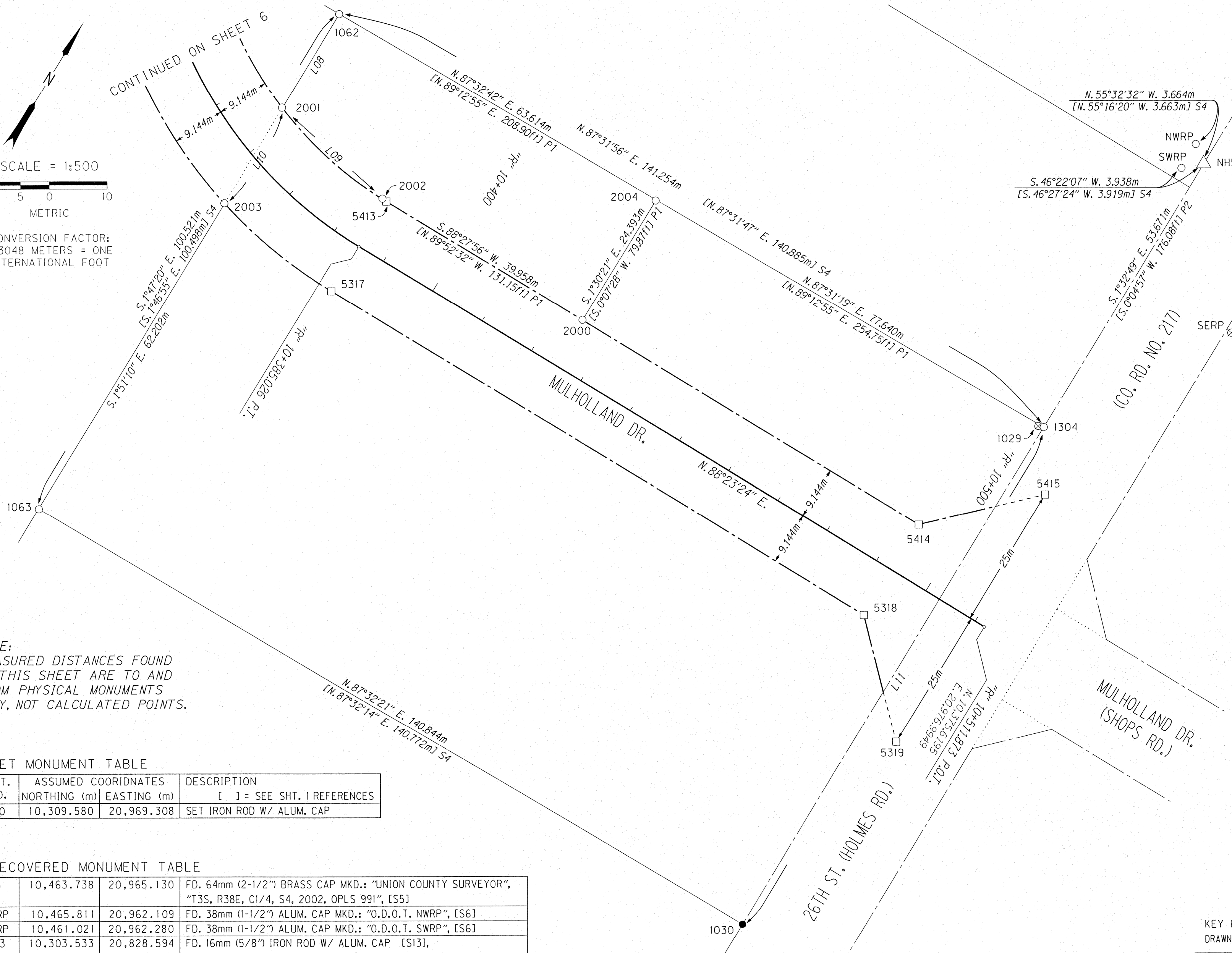
OREGON DEPARTMENT OF TRANSPORTATION
 RIGHT-OF-WAY BOUNDARY MONUMENTATION MAP
 LA GRANDE CORRIDOR IMPROVEMENTS (PHASE 1)
 WALLOWA LAKE HWY. NO. 10 (OREGON HWY. 82)
 MILEPOINT 1.2
 UNION COUNTY
 ODOT REGION 5
 3012 ISLAND AVE.
 LA GRANDE, OR 97850
 JUNE, 2015
 SCALE = 1:500
 Sheet 6 of 7 sheets

NW1/4, NE1/4, SE1/4 & SW1/4 of Section 4, T.3S. R.38E. W.M.



CONTINUED ON SHEET 4

CONTINUED ON SHEET 6



LINE TABLE

NO.	BEARING & LENGTH
L08	N. 1°36'40\" W. 19.029m [N. 0°03'42\" W. 62.171f] P1 [S. 0°03'42\" E. 62.421f] S1
L09	N. 81°06'44\" W. 24.006m [N. 79°21'46\" W. 78.841f] P1&S1 [N. 79°22'25\" W. 78.761f] P2&S2
L10	N. 1°45'31\" W. 19.291m [N. 0°03'42\" W. 63.341f] P1 [S. 0°03'42\" E. 63.341f] S1
L11	S. 1°33'19\" E. 100.544m [S. 1°43'04\" E. 100.517m] S4

LEGEND

- FOUND MONUMENTS
- △ FOUND MON. USED AS NETWORK PNT.
- CALCULATED POINT, NO MON.
- SET 16mm X 762mm (5/8\" X 30\") IRON ROD W/ 32mm (1-1/4\") ALUM. CAP MKD.: "ODOT, LS 2733"
- ⊗ LOCATION OF DESTROYED MON. (FOR POSITION & DESCRIPTION SEE SAME PNT. NO. ON [S4])
- R/W CENTERLINES
- - - NEW R/W BOUNDARY
- - - EXTG. R/W BOUNDARY
- PROPERTY BOUNDARY
- ⋯ PREVIOUS PROPERTY BOUNDARY
- [] = SEE SHT. 1 REFERENCES

NOTE:
MEASURED DISTANCES FOUND ON THIS SHEET ARE TO AND FROM PHYSICAL MONUMENTS ONLY, NOT CALCULATED POINTS.

SET MONUMENT TABLE

PNT. NO.	ASSUMED COORDINATES	DESCRIPTION
	NORTHING (m) EASTING (m)	[] = SEE SHT. 1 REFERENCES
1030	10,309.580 20,969.308	SET IRON ROD W/ ALUM. CAP

RECOVERED MONUMENT TABLE

PNT. NO.	NORTHING (m)	EASTING (m)	DESCRIPTION
NH5	10,463.738	20,965.130	FD. 64mm (2-1/2\") BRASS CAP MKD.: "UNION COUNTY SURVEYOR", "T3S, R38E, C1/4, S4, 2002, OPLS 991", [S5]
NWRP	10,465.811	20,962.109	FD. 38mm (1-1/2\") ALUM. CAP MKD.: "O.D.O.T. NWRP", [S6]
SWRP	10,461.021	20,962.280	FD. 38mm (1-1/2\") ALUM. CAP MKD.: "O.D.O.T. SWRP", [S6]
1063	10,303.533	20,828.594	FD. 16mm (5/8\") IRON ROD W/ ALUM. CAP [S13], 0.5m NORTHERLY OF EAST-WEST FENCE LINE
1304	10,410.087	20,966.579	FD. 16mm (5/8\") IRON ROD, 356mm (14\") BELOW SURFACE [S2]
2000	10,382.345	20,889.653	FD. 16mm (5/8\") IRON ROD W/ PL. CAP MKD.: "BCB" [P1] (BEARS NORTH 0.033m FROM LINE)
2001	10,384.984	20,825.991	FD. 16mm (5/8\") IRON ROD W/ PL. CAP MKD.: "BCB" [S1] (BEARS N. 74°42'09\" W. 0.062m FROM CALC. POSITION)
2002	10,381.275	20,849.709	FD. 16mm (5/8\") IRON ROD W/ PL. CAP MKD.: "BCB" [P1] (BEARS N. 71°12'43\" W. 0.245m FROM CALC. POSITION)
2003	10,365.702	20,826.583	FD. 16mm (5/8\") IRON ROD W/ PL. CAP MKD.: "BCB", BEARS N. 58°25'45\" W. 0.083m FROM CALC. POSITION, [S1]
2004	10,406.730	20,889.012	FD. 16mm (5/8\") IRON ROD W/ PL. CAP MKD.: "BCB" [P1]

RIGHT-OF-WAY LOCATION TABLE

PNT. NO.	ASSUMED COORDINATES	STATION (m)	OFFSET (m)	DESCRIPTION
	NORTHING (m) EASTING (m)			
5317	10,362.915 20,850.455	"R" 10+385.026	9.144 RT	CALCULATED ONLY, NO MON. SET
5318	10,365.949 20,958.386	"R" 10+493.000	9.144 RT	CALCULATED ONLY, NO MON. SET
5319	10,350.555 20,975.043	"R" 10+509.218	25.000 RT	CALCULATED ONLY, NO MON. SET
5413	10,381.196 20,849.941	"R" 10+385.026	9.144 LT	CALCULATED ONLY, NO MON. SET
5414	10,384.230 20,957.872	"R" 10+493.000	9.144 LT	CALCULATED ONLY, NO MON. SET
5415	10,400.527 20,973.368	"R" 10+508.948	25.000 LT	CALCULATED ONLY, NO MON. SET

UNION COUNTY SURVEYOR
Date Received 6/15/15
Date Filed 6/16/15
By Neil G. Mann
File No. 038-2015

REGISTERED PROFESSIONAL LAND SURVEYOR
Robert E. Butler
OREGON
JULY 25, 1995
ROBERT ERICH BUTLER
2733
EXPIRES 12/31/2015

KEY NO.: 11827
DRAWN: F. J. SCHAD

OREGON DEPARTMENT OF TRANSPORTATION
RIGHT-OF-WAY BOUNDARY MONUMENTATION MAP
LA GRANDE CORRIDOR IMPROVEMENTS (PHASE I)
WALLOWA LAKE HWY. NO. 10 (OREGON HWY. 82)
MILEPOINT 1.2
UNION COUNTY
ODOT REGION 5
3012 ISLAND AVE.
LA GRANDE, OR 97850
JUNE, 2015
SCALE = 1:500
Sheet 7 of 7 sheets