

**REFERENCE MATERIAL**

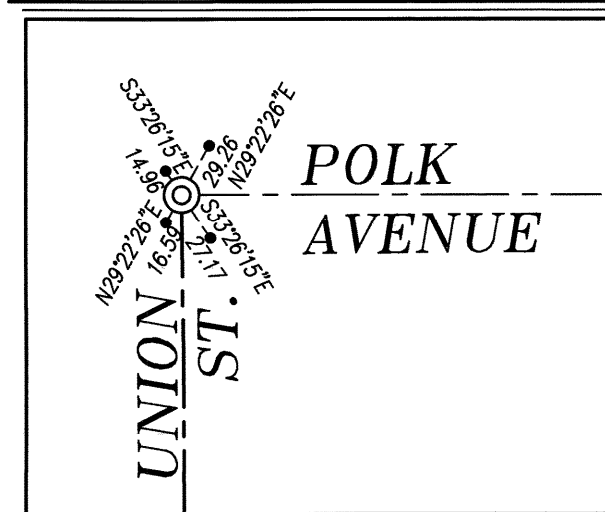
Plat of Riverside Addition  
 Survey Number 80-77  
 Survey Number 106-78  
 Survey Number 43-79  
 Survey Number 18-89  
 Survey Number 040-1996

**BASIS OF BEARING**

Forward bearing as published by the U.S.C.  
 and G.S. from Δ COLLEGE to Δ VALLEY  
 Dated 1946.

**SCALE: 1" = 100'**

**DETAIL SCALE: 1" = 100'**



**LEGEND**

- Found 5/8" iron pin with plastic cap marked BGA SURVEY MARKER, set by Survey Number 040-1996
- ▲ Found 5/8" iron pin set by Survey Number 80-77
- Found 2" brass cap in concrete, set by Survey Number 106-78
- ⊙ Set 2" brass cap marked BAGETT GRIFFITH AND BLACKMAN in concrete
- Set cotton spindle as reference
- ( ) Record measurement as per Survey Number 106-78
- [ ] Record measurement as per Survey Number 80-77
- { } Record measurement as per Survey Number 040-1996
- Centerline

**NARRATIVE**

This survey was done at the request of Norm Paullus, public works director for the City of La Grande. Mr. Paullus wanted to monument certain centerline intersections following a paving project. Monuments along Division Avenue, set by Survey Number 106-78, were tied prior to the work and monuments were placed at the tied position. The monument at Alder and Division was not found and was placed by record bearing and distance from Umatilla and Division. Doing so was harmonious with record bearing and distance to the intersection of Walnut and Division. I place the centerline of Harney and Polk by retracement of the monuments set by Survey Number 040-1996. The monument at Lake Avenue and Union Street was found disturbed. I hold the record angle from said intersection, as per Survey Number 106-78, to the intersections of Polk and Union and Division and Union, and proportion the distances to reestablish the position. I find no other unusual conditions with this survey.

REGISTERED  
 PROFESSIONAL  
 LAND SURVEYOR  
  
 OREGON  
 JUNE 2, 2010  
 JEFFREY S. HSU  
 83571

Renewal Date: June 30, 2015

UNION COUNTY  
 SURVEYOR  
 Date Received 5/27/15  
 Date Filed 5/27/15  
 By J. S. Hsu  
 File No. 032-2015

BAGETT, GRIFFITH & BLACKMAN 2006 Adams Avenue, LaGrande, Oregon Map of Survey	
Centerline intersection monuments on Division Ave. between Walnut St. and Union Street and on Union Street between Division Ave. and Polk Ave.	
UNION COUNTY, OREGON	
SURVEYED FOR	City of La Grande
SURVEYED BY	J. S. H.
Scale: 1" = 100'	Drawn by: J. S. H. Feb.- May 2015