

# BASIS OF BEARING

True Geodetic North at the corner common to Sections 5, 6, 7 and 8, Township 4 South, Range 41 East of the Willamette Meridian as determined by GPS observation (NAD-83 (1991) datum) as per Survey Number 030-2014

SCALE: 1" = 600'

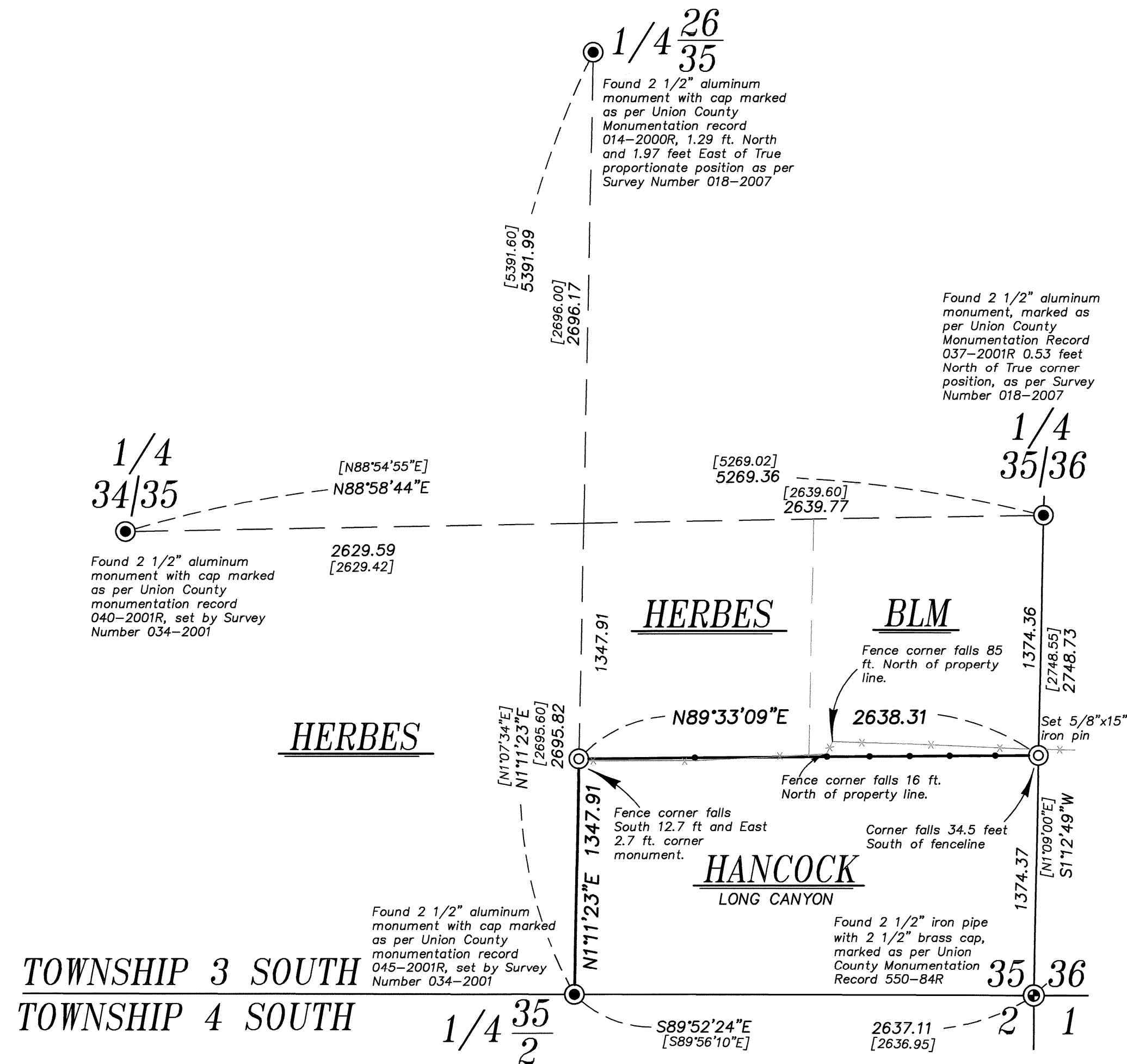
# LEGEND

- ⊙ Found 2 1/2" iron pipe with 2 1/2" brass cap, marked as per Union County monumentation records
- ⊙ Found 2 1/2" aluminum pipe with 2 1/2" aluminum cap, marked as per Union County Monumentation Records
- ⊙ Set 5/8"x30" iron rod (unless otherwise noted) with 2 1/2" aluminum cap marked as per Union county Monumentation records, filed separately
- [ ] Record measurement as per Survey Number 034-2001
- × Fenceline
- Set steel fencepost on line

# REFERENCE MATERIAL

Union County Monumentation Records  
 Survey Number 034-2001  
 Survey Number 018-2007  
 Survey Number 030-2014

DEED REFERENCES  
 Microfilm Document Number 20134275  
 Microfilm Document Number 20134271  
 Microfilm Document Number 20134269  
 Microfilm Document Number 20140467



# NARRATIVE

This survey was done at the request of Patrick Marolla on behalf of Hancock Forest Management. Mr. Marolla wanted the ownership in Section 35 monumented and posted prior to a timber harvest. I recover the monuments as shown hereon. I subdivide the section as per BLM Manual of Instructions 2009. Fencelines are off as shown. I find no other unusual conditions with this survey.

REGISTERED  
 PROFESSIONAL  
 LAND SURVEYOR

*Jeffrey S. Hsu*

OREGON  
 JUNE 2, 2010  
 JEFFREY S. HSU  
 83571

Renewal Date: June 30, 2017

UNION COUNTY  
 SURVEYOR

Date Received 4/27/15

Date Filed 4/27/15

By J. S. H.

File No. 024-2015

BAGETT, GRIFFITH & BLACKMAN 2006 Adams Avenue, LaGrande, Oregon Map of Survey	
Section 35, Township 3 South, Range 40 East of the Willamette Meridian	
UNION COUNTY, OREGON	
SURVEYED FOR	Hancock Forest Management
SURVEYED BY	J. S. H.
Scale: 1" = 600'	Drawn by: J. S. H. Apr. 2015

SURVEY NUMBER 024-2015