

# BASIS OF BEARING

True Geodetic North at the corner common to Sections 19, 20, 29 and 30, Township 1 South, Range 40 East of the Willamette Meridian, as determined by GPS observation

SCALE: 1" = 500'

## LEGEND

- Found monument as described, as per Union County Monumentation Records
- Found 2" iron pipe with 2" brass cap marked as per Union County Monumentation records, set by Survey Number 37-86
- ⊙ Found 2 1/2" aluminum pipe with 2 1/2" aluminum cap, marked as per Union County Monumentation records, set by Survey Number 042-2004
- ◆ Found 2 1/2" aluminum pipe with 2 1/2" aluminum cap marked as per Union County Monumentation records, set by Survey Number 013-2015
- Found 5/8" iron pin with 2 1/2" aluminum cap marked as per Union County Monumentation records, set by Survey Number 013-2015
- ⊙ Set 5/8"x30" iron pin with 2 1/2" aluminum cap marked as per Union County Monumentation records, filed separately
- Steel fencepost set on line
- ✕ Fenceline

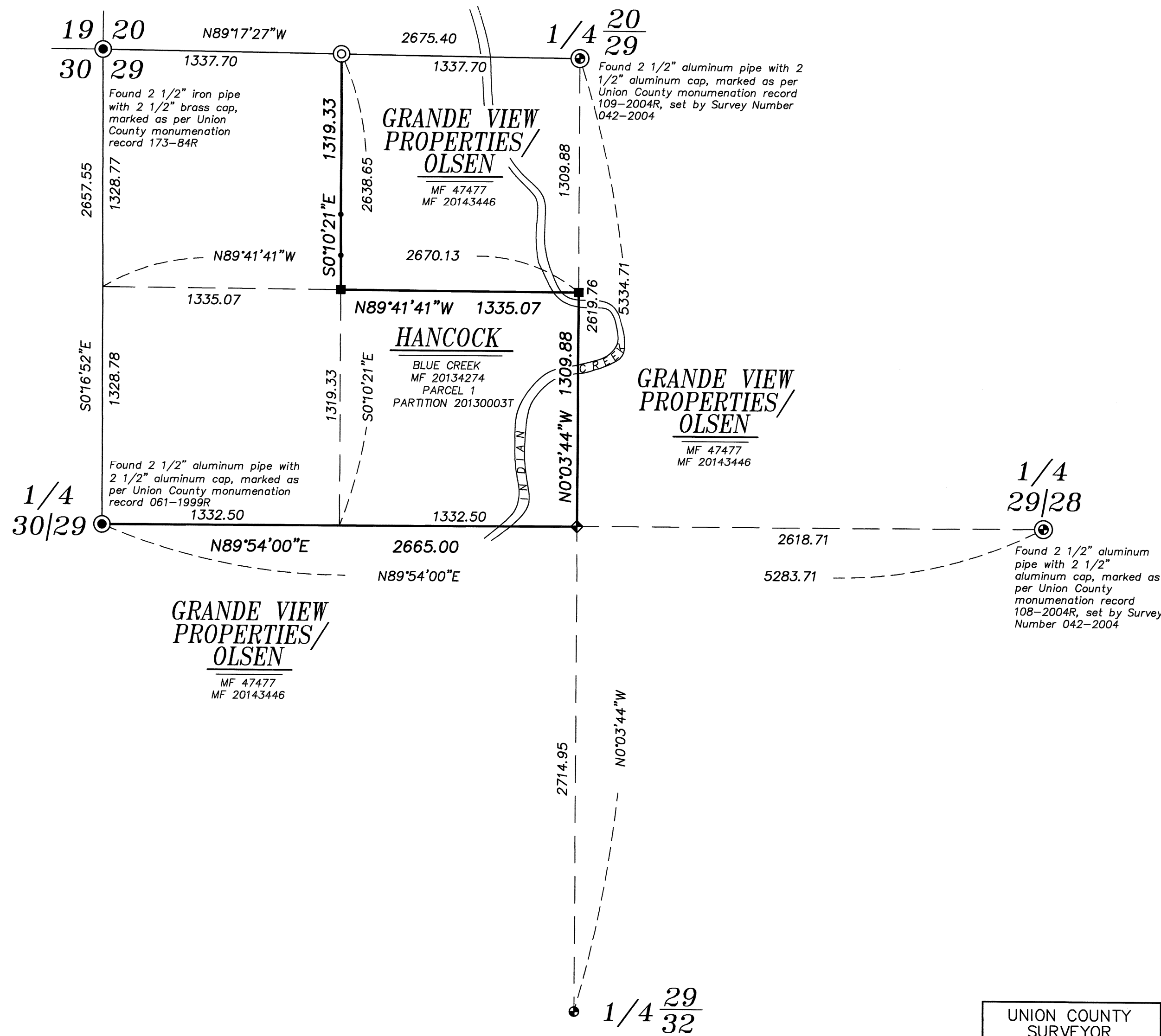
## REFERENCE MATERIAL

Union County Monumentation Records  
 Survey Number 37-86  
 Survey Number 042-2004  
 Survey Number 013-2015  
 Partition Plat Number 20130003T

DEED REFERENCES  
 Microfilm Document Number 47477  
 Microfilm Document Number 20134274  
 Microfilm Document Number 20143446

## NARRATIVE

This survey was done at the request of Patrick Marolla on behalf of Hancock Forest Management, land manager for the land within. Mr. Marolla wanted the property line in this area marked prior to logging. This section was previously divided by Survey Number 013-2015 but the W 1/16th common to Sections 20 and 29 was not set at that time. I set it with this survey and mark the line in the area of the proposed logging area. I find no unusual conditions with this survey.



Found 2" iron pipe with 2" brass cap, marked as per Union County monumentation record 314-86R, set by Survey Number 37-86

UNION COUNTY SURVEYOR

Date Received 4/17/15

Date Filed 4/17/15

By [Signature]

File No. 021-2015

REGISTERED PROFESSIONAL LAND SURVEYOR

[Signature]

OREGON JUNE 2, 2010

JEFFREY S. HSU 83571

Renewal Date: June 30, 2017

**BAGETT, GRIFFITH & BLACKMAN**  
 2006 Adams Avenue, LaGrande, Oregon  
 Map of Survey

Situate in Section 29, Township 1 South, Range 40 East of the Willamette Meridian

UNION COUNTY, OREGON

SURVEYED FOR	Hancock Forest Management
SURVEYED BY	J. S. H.
Scale: 1" = 500'	Drawn by: J. S. H. April 2015