

# LOT LINE ADJUSTMENT

## BASIS OF BEARING

Solar observation taken at the Southwest corner of Section 15, Township 3 South, Range 40 East of the Willamette Meridian.

SCALE: 1"=60'

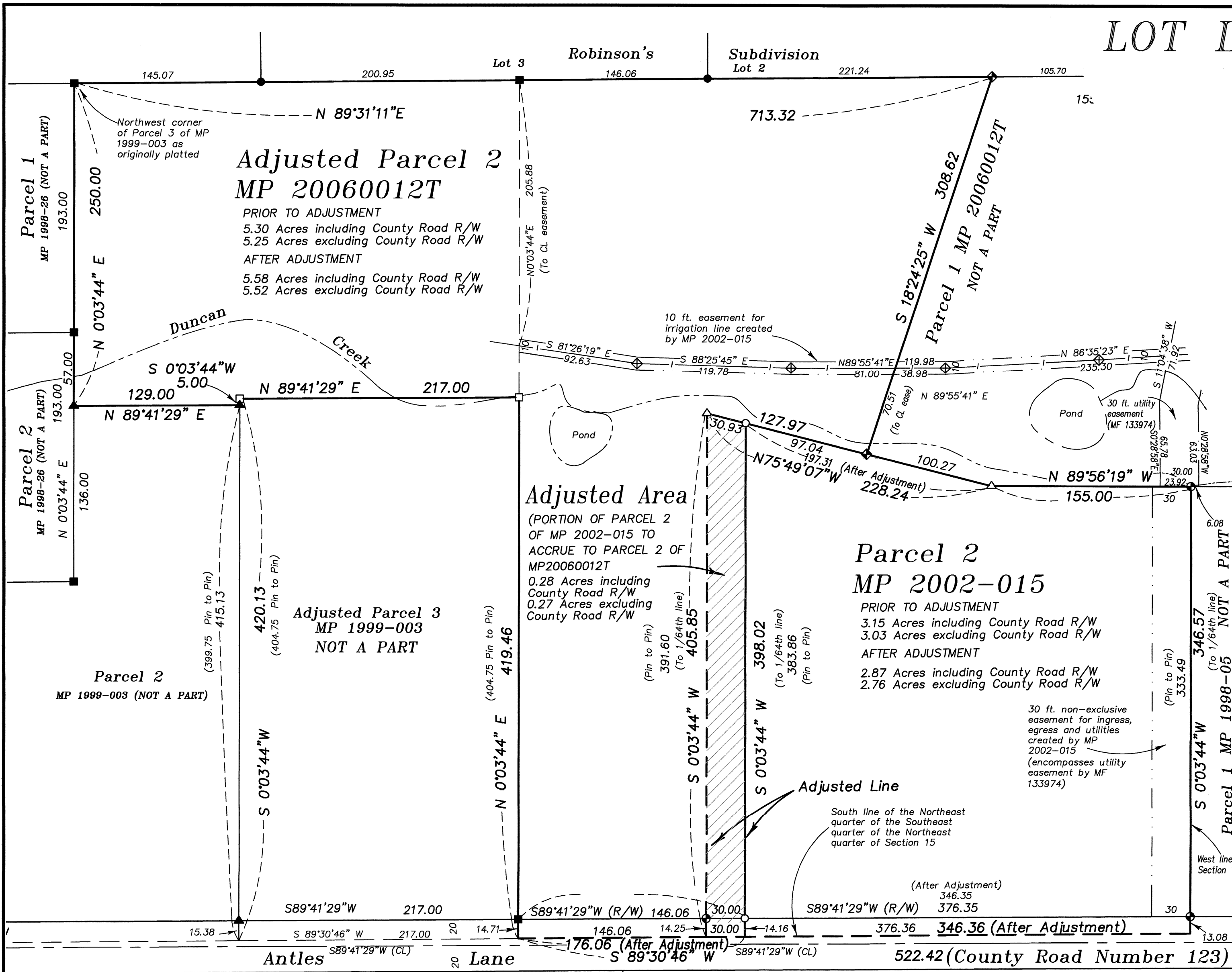
## REFERENCE MATERIAL

Plat of Robinson's Subdivision  
Survey Number 29-89  
Survey Number 017-2015  
Minor Partition Plat Number 1998-26  
Minor Partition Plat Number 1999-003  
Minor Partition Plat Number 2002-015  
Minor Partition Plat Number 20060012T  
  
Deed Microfilm Number 133974  
Deed Microfilm Number 20150801

## LEGEND

- Found 5/8" iron pin with plastic cap marked "BGA SURVEY MARKER" set by the plat of Robinson's Subdivision
- ⊙ Found 5/8" iron pin with plastic cap marked "BGA SURVEY MARKER" set by Survey Number 29-89
- Found 5/8" iron pin with plastic cap marked "BGB SURVEY MARKER" set by Minor Partition Plat Number 1998-26
- ▲ Found 5/8" iron pin with plastic cap marked "BGB SURVEY MARKER" set by Minor Partition Plat Number 1999-003
- △ Found 5/8" iron pin with plastic cap marked "BGB SURVEY MARKER" set by Minor Partition Plat Number 2002-015
- ◆ Found 5/8" iron pin with plastic cap marked "BGB SURVEY MARKER" set by Minor Partition Plat Number 20060012T
- Found 5/8" iron pin with plastic cap marked "BGB SURVEY MARKER" set by Survey Number 017-2015
- Set 5/8"x30" iron pin with plastic cap marked "BGB SURVEY MARKER"
- ⊕ Irrigation Riser
- |— Irrigation Line
- - - - - Easement Line
- - - - - Creek

Adjusted area--Portion of Parcel 2 of Minor Partition Plat Number 2002-015 to accrue to Parcel 2 of Minor Partition Plat Number 20060012T



## NARRATIVE

This survey was done at the request of Ted Gilstrap, representing the Gilstrap Family LLC. The purpose of this survey is to adjust the common line between Parcel 2 of Minor Partition Plat Number 2002-015 and Parcel 2 of Minor Partition Plat Number 20060012T, which was previously adjusted and documented by Survey Number 017-2015. The monumentation from previous surveys, partitions and subdivisions was recovered in place as shown. I place the adjusted line at the direction of Mr. Gilstrap, so as to capture an existing driveway on Parcel 2 of Partition Plat Number 20060012T after adjustment. I have prepared the necessary legal descriptions for this adjustment. I find no unusual conditions on this survey.

REGISTERED  
PROFESSIONAL  
LAND SURVEYOR

*Rick G. Robinson*

OREGON  
JULY 17, 1988  
RICK G. ROBINSON  
2219

Renewal Date: Dec. 31, 2016

UNION COUNTY  
SURVEYOR

Date Received 3/31/15

Date Filed 3/31/15

By *[Signature]*

File No. 019-2015

**BAGETT, GRIFFITH & BLACKMAN**  
2006 Adams Avenue, LaGrande, Oregon

Map of Survey  
LOT LINE ADJUSTMENT  
Between the common lines of Parcel 2 of Partition Plat 20060012T and Parcel 2 of Partition Plat 2002-015, situated in the Northeast quarter of Section 15, Township 3 South, Range 40 East of the Willamette Meridian, UNION COUNTY, OREGON

SURVEYED FOR	Gilstrap Family LLC	
SURVEYED BY	R.G.R.	3/15
Scale: 1" = 60'	Drawn by: R.G.R.	3/15

SURVEY NUMBER 019-2015