

BASIS OF BEARING

True Geodetic North at the corner common to Sections 19, 20, 29 and 30, Township 1 South, Range 40 East of the Willamette Meridian, as determined by GPS observation

SCALE: 1"=300'

LEGEND

- Found brass cap monument, see Survey Number 039-1998 and 043-1998
- ⊙ Found 2 1/2" aluminum pipe with aluminum cap, marked as per Union County monumentation record 023-1995R
- ⊕ Found 2 1/2" aluminum pipe with aluminum cap marked as per Union County monumentation records, set by Survey Number 043-1998
- ⊙ Set 5/8" x 30" iron pin with 2 1/2" aluminum cap marked as per Union County Monumentation records, filed separately
- [] Record measurement as per Survey Number 043-1998
- Steel fencepost set on line

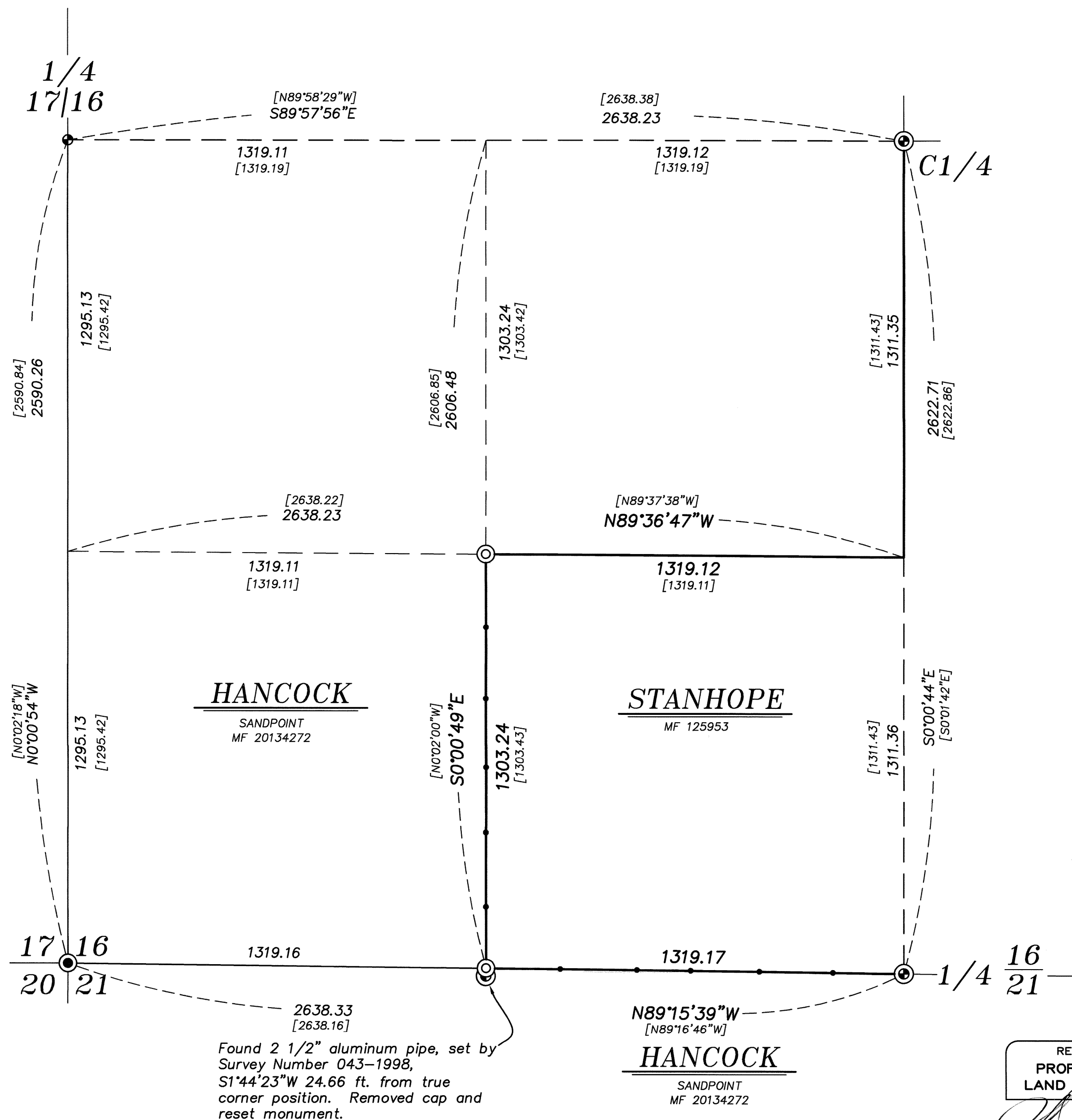
REFERENCE MATERIAL

Union County Monumentation Records
 Survey Number 039-1998
 Survey Number 043-1998
 Partition Plat Number 2013-001

DEED REFERENCES
 Microfilm Document Number 125953
 Microfilm Document Number 20134272

NARRATIVE

This survey was done at the request of Patrick Marolla on behalf of Hancock Forest Management, land manager of the land within. Mr. Marolla wanted to mark the property boundaries in preparation for logging. The section was previously subdivided by Survey Number 032-1998, however the Southwest sixteenth corner was not set at that time. I find the controlling monuments harmonious with said survey and subdivide the section as per BLM Manual of Instruction 2009. The West sixteenth on the South line of Section 16 appears to be significantly out of position. I replace this at the true corner position and remove the cap from the old monument. Steel fenceposts were placed on the line as shown at 200-250 foot intervals. I find no other unusual conditions with this survey.



Found 2 1/2" aluminum pipe, set by Survey Number 043-1998, S1°44'23"W 24.66 ft. from true corner position. Removed cap and reset monument.

REGISTERED PROFESSIONAL LAND SURVEYOR
 OREGON JUNE 2, 2010
 JEFFREY S. HSU 83571
 Renewal Date: June 30, 2015

UNION COUNTY SURVEYOR
 Date Received 3/11/15
 Date Filed 3/11/15
 By [Signature]
 File No. 014-2015

BAGETT, GRIFFITH & BLACKMAN 2006 Adams Avenue, LaGrande, Oregon	
Map of Survey Situate in the Southwest quarter of Section 16, Township 1 South, Range 40 East of the Willamette Meridian	
UNION COUNTY, OREGON	
SURVEYED FOR	Hancock Forest Management
SURVEYED BY	J. S. H.
Scale: 1" = 300'	Drawn by: J. S. H. Feb.-Mar. 2015