

# BASIS OF BEARING

True Geodetic North at the corner common to Sections 19, 20, 29 and 30, Township 1 South, Range 40 East of the Willamette Meridian, as determined by GPS observation

SCALE: 1" = 500'

## LEGEND

- ⊙ Found monument as described, as per Union County Monumentation Records
- Found 2" iron pipe with 2" brass cap marked as per Union County Monumentation records, set by Survey Number 37-86
- ⊙ Found 2 1/2" aluminum pipe with 2 1/2" aluminum cap, marked as per Union County Monumentation records, set by Survey Number 042-2004
- ⊙ Set 2 1/2"x30" aluminum pipe with 2 1/2" aluminum cap marked as per Union County Monumentation records, filed separately
- Set 5/8"x30" iron pin with 2 1/2" aluminum cap marked as per Union County Monumentation records, filed separately
- Steel fencepost set on line
- ✕ Fenceline

## REFERENCE MATERIAL

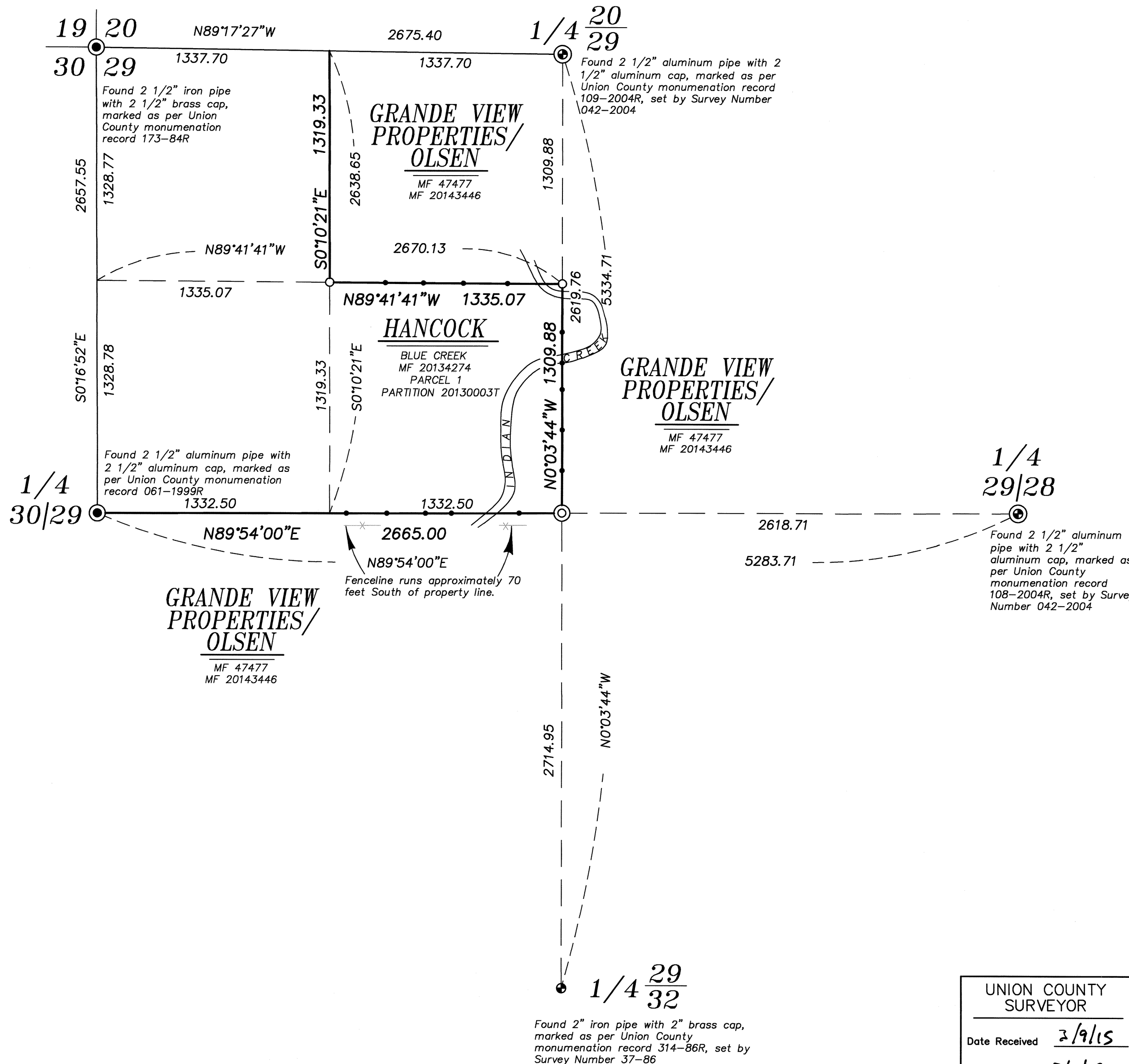
Union County Monumentation Records  
 Survey Number 37-86  
 Survey Number 042-2004  
 Partition Plat Number 20130003T

### DEED REFERENCES

Microfilm Document Number 47477  
 Microfilm Document Number 20134274  
 Microfilm Document Number 20143446

## NARRATIVE

This survey was done at the request of Patrick Marolla on behalf of Hancock Forest Management, land manager for the land within. Mr. Marolla wanted the property line in this area marked prior to logging. I recover the controlling monuments of Section 29 as shown hereon. I subdivide the section as per BLM Manual of Instruction 2009. Select lines, as shown hereon, are marked with steel fenceposts at approximate 200-250 foot intervals. I find no unusual conditions with this survey.



UNION COUNTY SURVEYOR	
Date Received	2/9/15
Date Filed	3/9/15
By	<i>Neil G. ...</i>
File No.	013-2015

REGISTERED PROFESSIONAL LAND SURVEYOR
<i>Jeffrey S. Hsu</i>
OREGON JUNE 2, 2010
JEFFREY S. HSU 83571
Renewal Date: June 30, 2015

BAGETT, GRIFFITH & BLACKMAN 2006 Adams Avenue, LaGrande, Oregon Map of Survey	
Situates in Section 29, Township 1 South, Range 40 East of the Willamette Meridian	
UNION COUNTY, OREGON	
SURVEYED FOR	Hancock Forest Management
SURVEYED BY	J. S. H.
Scale: 1" = 500'	Drawn by: J. S. H. Feb.-Mar. 2015