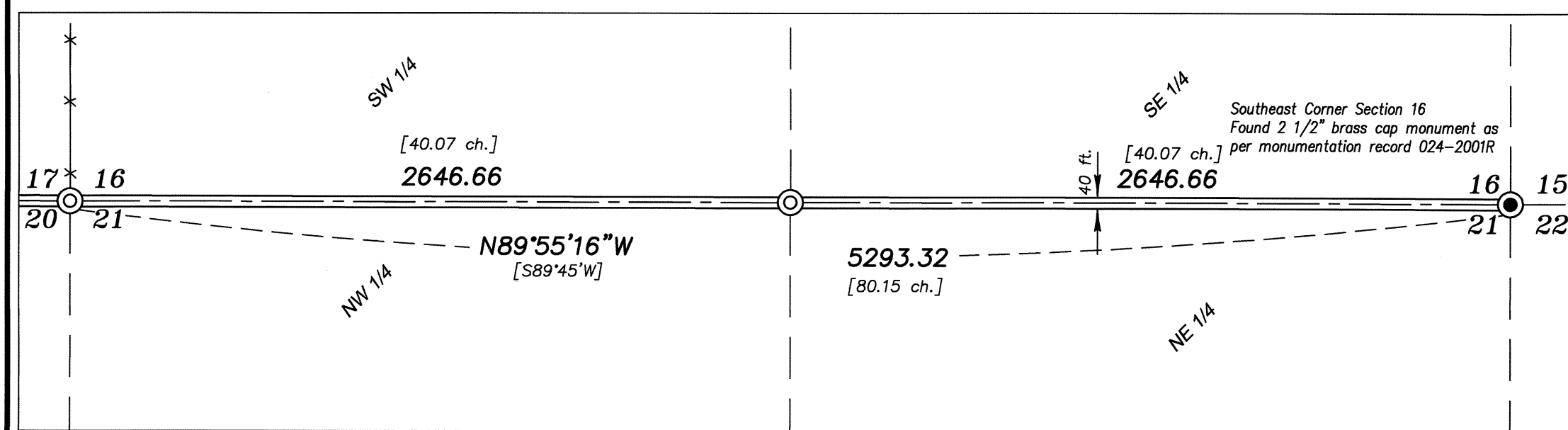


BASIS OF BEARING
 Solar observation taken at a point 3550 feet South and 3360 feet West of the Northeast corner of Section 22, Township 6 South, Range 39 East of the Willamette Meridian

SCALE: 1" = 500'



LEGEND

- Found monument as described, as per Union County Monumentation Records
- ⊙ Set 5/8" copperclad iron pin with 2 1/2" brass cap
- ⊕ Set 2 1/2"x30" aluminum pipe with 2 1/2" aluminum cap
- Centerline
- × × Existing Fenceline
- () Record information of GLO Contract #102 executed by Timothy W. Davenport, dated July 20, 1863
- [] Record information of GLO Contract #103 executed by David P. Thompson, dated September 3, 1863
- { } Record information of Old Book of Surveys, Page 44 by J. W. Kimbrell, dated February 28, 1888
- \ \ Record bearing of Survey Number 014-2009

REFERENCE MATERIAL

GLO Contract #102 executed by Timothy W. Davenport, dated July 20, 1863
 GLO Contract #103 executed by David P. Thompson, dated September 3, 1863
 Union County Monumentation Records
 Union County Road Records (Petition for Road No. 614 (now No. 103))
 Old Book of Surveys, Page 44
 Old Book of Surveys, Page 55
 Survey Number 011-1998
 Survey Number 012-1998
 Survey Number 014-2009
 Survey Number 027-2014
 Partition Plat Number 20140021T

UNION COUNTY SURVEYOR
 Date Received 3/4/15
 Date Filed 3/4/15
 By: [Signature]
 File No. 012-2015

NARRATIVE

This survey was done at the request of the Union County Surveyor for the purpose of monumentation of corners along Coughanour Lane. The Union County Road records for County Road Number 614 (now No. 103) call the road as being along the section lines. This petition and road survey calls the centerline of the road in common with the South line of Section 18 and running East along the section line to the "road from North Powder". I use the constructed centerline of the roadway to control the Northerly position of the corners, with the existing fences running North from the road at the South 1/4 corner of Section 17 and the Southeast corner of Section 17 controlling the Easterly position of the corners. The Corners West of the South 1/4 corner of Section 17 were established by proportionate distance at the centerline of the constructed roadway. The Southwest corner of Section 18 was monumented along the line between the West 1/4 corner of Section 18 and the West 1/4 corner of Section 30, at the extension of the centerline of Coughanour Lane. The original road petition also calls for a 40 ft. width, as detailed on survey number 027-2014. The positioning using this method is very harmonious with the original GLO record distance as well as the retracement by Kimbrell along the South line of Section 18. I find no unusual conditions on this survey.

REGISTERED PROFESSIONAL LAND SURVEYOR
 [Signature]
 OREGON JULY 17, 1986
 RICK G. ROBINSON 2219
 Renewal Date: Dec. 31, 2016

NOTE

For monumentation information, see monumentation records filed separately

BAGETT, GRIFFITH & BLACKMAN
 2006 Adams Avenue, LaGrande, Oregon
 Map of Survey

Monumentation of selected corners in Township 6 South, Range 39 East of the Willamette Meridian

UNION COUNTY, OREGON

SURVEYED FOR	Union County Surveyor	
SURVEYED BY	R.G.R.	2/15
Scale: 1" = 500'	Drawn by: R.G.R.	3/15