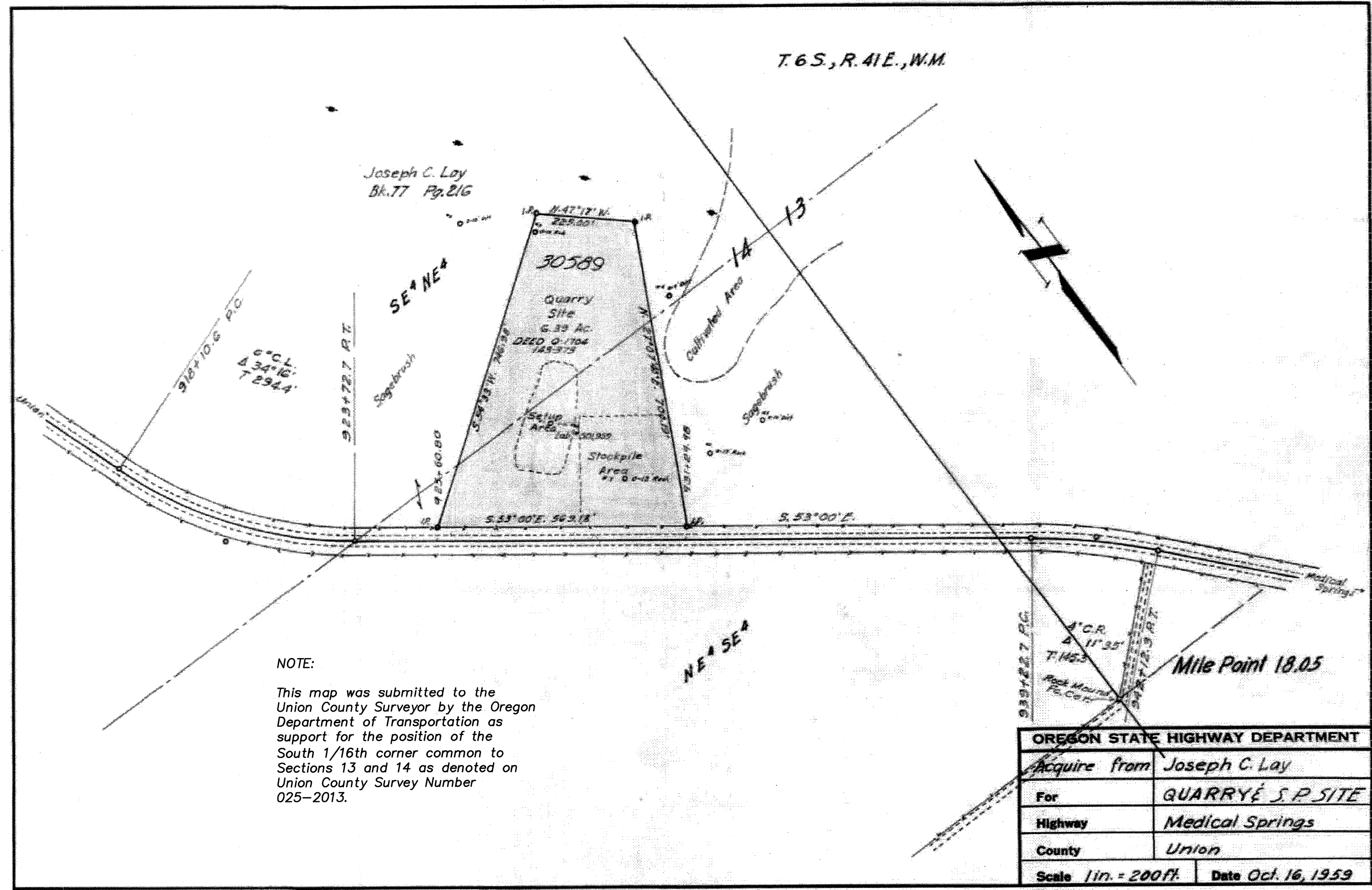


175-1331

T.6S.,R.41E.,W.M.



NOTE:
 This map was submitted to the Union County Surveyor by the Oregon Department of Transportation as support for the position of the South 1/16th corner common to Sections 13 and 14 as denoted on Union County Survey Number 025-2013.

OREGON STATE HIGHWAY DEPARTMENT	
Acquire from	Joseph C. Lay
For	QUARRY & S.P. SITE
Highway	Medical Springs
County	Union
Scale 1 in. = 200 ft.	Date Oct. 16, 1959

UNION COUNTY SURVEYOR	
Date Received	2/9/15
Date Filed	2/9/15
By	<i>H. G. Mann</i>
File No.	005-2015