

LOT LINE ADJUSTMENT

BASIS OF BEARING

REFERENCE MATERIAL

Solar observation taken at the North quarter corner of Section 15, Township 1 North, Range 39 East of the Willamette Meridian.

SCALE: 1" = 60'

Plat of Hindman's Addition to Elgin
 Survey Number 73-73
 Survey Number 96-73
 Survey Number 76-77
 Survey Number 54-82
 Survey Number 21-86
 Survey Number 12-87
 Survey Number 036-1997
 Survey Number 016-1999
 Survey Number 031-2006
 Survey Number 044-2013
 ODOT Drawing Number 4B-22-10

Union County Tax Assessor Authorization 05-09

DEED REFERENCES
 Book 97 Page 491
 Book 99, Page 632
 Book 143, Page 323
 Book 154, Page 563
 Microfilm Number 45602
 Microfilm Number 104128
 Microfilm Number 144027
 Microfilm Number 20022194

LEGEND

- Found 1/2" iron pipe set by survey number 76-77
- Found iron pin with plastic cap (unless otherwise mentioned) set by survey number 54-82
- ▲ Found unrecorded Railroad Spike documented on survey number 54-82
- Found unrecorded 1/2" pipe documented on survey number 54-82
- Found 5/8" iron pin with plastic cap marked BGB SURVEY MARKER, set by Survey Number 044-2013
- ◆ Found 5/8" iron pin with plastic cap marked APA set by Survey Number 036-1997
- ◆ Found 5/8" iron pin with plastic cap marked OREGON LS 1848, set by Survey Number 12-87
- Set 5/8"x30" iron pin with plastic cap marked "BGB SURVEY MARKER"
- Centerline
- Existing Fenceline
- { } Record measurement as per plat of Hindman's Addition to Elgin
- [] Record measurement as per Survey Number 031-2006
- () Record measurement as per Survey Number 044-2013
- { } Record measurement as per Survey Number 21-86
- (()) Record measurement as per Survey Number 12-87
- [[]] Record measurement as per Survey Number 76-77

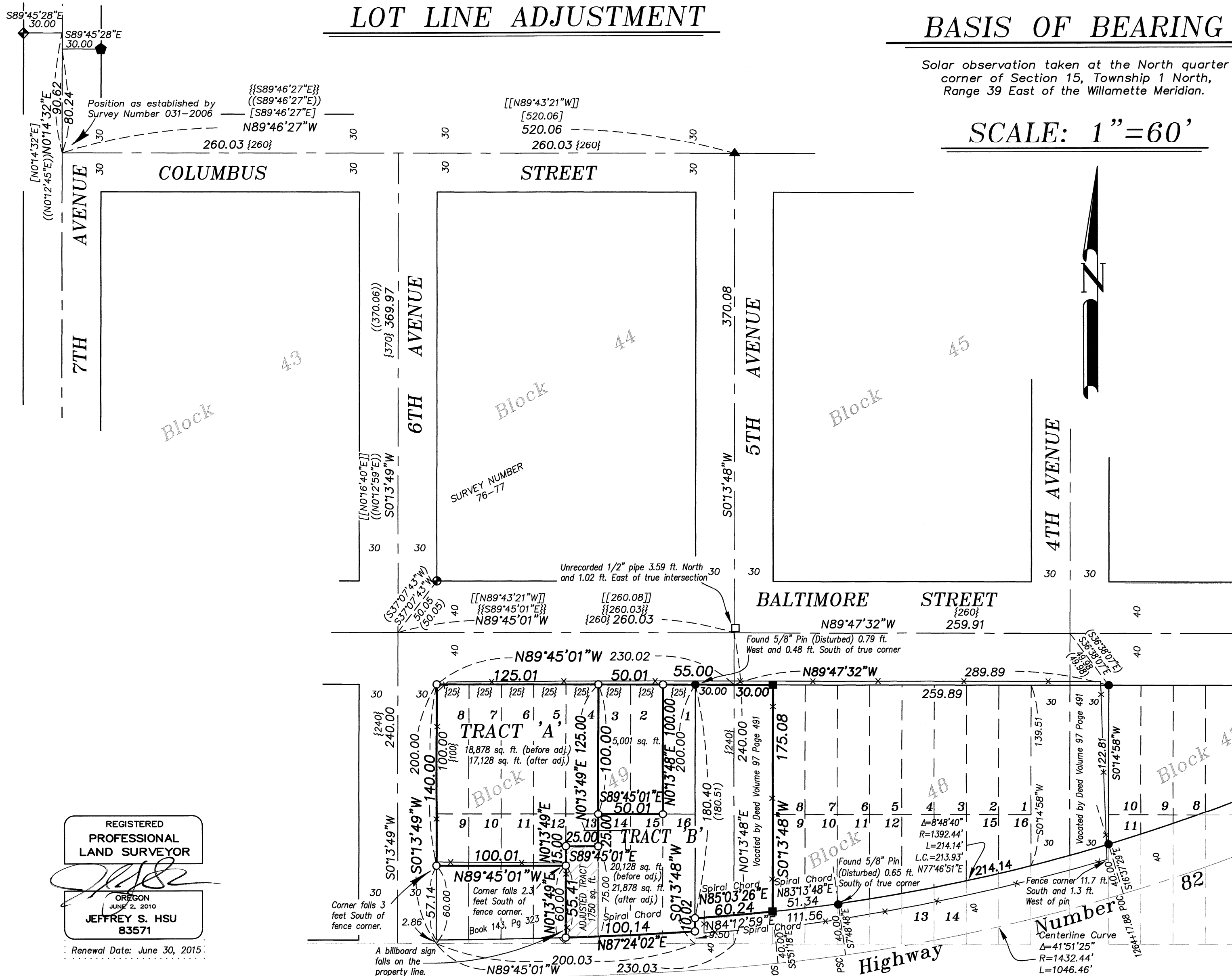
UNION COUNTY SURVEYOR

Date Received 1/12/15

Date Filed 1/12/15

By Nick G. Minner

File No. 001-2015



REGISTERED PROFESSIONAL LAND SURVEYOR

OREGON
 JUNE 2, 2010
 JEFFREY S. HSU
 83571

Renewal Date: June 30, 2015

NARRATIVE

This survey was done at the request of Marlene Bechtel Rysdam. Ms. Rysdam wanted to monument the the exteriors of the lots as shown hereon as well as adjust a line between Lots 13 and 14. The centerlines of the right of ways in this portion of Hindman's Addition have relied on railroad spikes set at centerline intersections, many of which have been removed by road reconstruction. The centerline of 6th and Baltimore I place by record bearing and distance from the pipe set by Survey 76-77 at the Southwest corner of Block 44. The intersection of 4th and Baltimore I place by record tie to the pin at the Northwest corner of Block 47. I hold the position at the intersection of Columbus and 7th Avenue as established by Survey Number 031-2006 by coming record bearing and distance from the intersection of 5th Avenue and Columbus. The placement is harmonious with monuments set by Survey 12-87 and 036-1997. The intersection of 6th Street and Columbus I place by single proportion along Columbus St. From this intersection I drive a line through the intersection position at 6th and Baltimore and extend it record distance (240 ft) to place the South line of this portion of Hindman's Addition. No right of way was dedicated South of Block 49 by the plat of Hindman's Addition. The excepted tract (Book 143, Pg 323) in the Southwest corner of Block 49 is a metes and bounds description with the senior right. Due to the harmony in the described distances with the platted lot lines, I place the East line of said tract contiguous with the East line of Lot 12. The portion to be adjusted is the South 75 feet of Lot 13 of Block 49, excepting that portion lying in the Highway 82. Fences are off as shown hereon. A billboard sign falls on the line between Lots 12 and 13. I find no other unusual conditions with this survey.

Centerline Spiral
 L = 400.00 ft.
 S = 8'00"
 a = 1.00

APPROVALS

I hereby approve of this Lot Line Adjustment this 12 day of JANUARY, 2015.

Brock Eckstein
 Brock Eckstein, Administrator, City of Elgin

We, ARIE LEE RYSDAM and MARLENA BECHTEL RYSDAM, hereby certify that we are the owners of the tracts being adjusted, and that we authorize the reconfiguration as depicted on this survey this 12th day of January, 2015.

Arie Lee Rysdam
 Arie Lee Rysdam

Marlena Bechtel Rysdam
 Marlena Bechtel Rysdam

By Marlena Bechtel Rysdam
 as attorney in fact

BAGETT, GRIFFITH & BLACKMAN
 2006 Adams Avenue, LaGrande, Oregon

Map of Survey
 Situate in Block 49,
 Hindman's Addition
 City of Elgin

UNION COUNTY, OREGON

SURVEYED FOR	Marlena Bechtel-Rysdam	
SURVEYED BY	J. S. H.	Jan. 2015
Scale: 1" = 60'	Drawn by: J. S. H.	Jan. 2015

SURVEY NUMBER 001-2015