

NE 1/4, SEC. 8, T. 3 S., R. 38 E., W.M.

SURVEY NARRATIVE

THE PURPOSE OF THIS SURVEY IS TO DEFINE THE NEW RIGHT OF WAY BOUNDARY (RW) AND CONTROLLING CENTER LINE FOR A PORTION OF WILLOW ST. LOCATED IN THE NE 1/4 SEC. 8, T. 3 S., R. 38 E., W.M. IN THE CITY OF LA GRANDE, UNION COUNTY, OREGON. THIS RW WAY WAS ACQUIRED BY THE OREGON DEPARTMENT OF TRANSPORTATION (ODOT) AS PART OF THE US 30: WILLOW STREET (LA GRANDE) SIGNAL PROJECT THAT WAS COMPLETED IN 2006. FOR THIS PURPOSE WE USED THE NETWORK OPTION AS DEFINED BY OREGON REVISED STATUTE (ORS) 209.155, PARAGRAPH 2B.

THE GEOMETRY OF ODOT DRAWING 10B-19-07 WAS USED TO DEFINE THE CONTROLLING CENTER LINE AND RW ANGLE POINTS FOR THIS SURVEY. THE POSITION OF POINTS 1, 2, 4, AND 5 FROM UNION COUNTY SURVEY (CS) 005-2004 AND ODOT DRAWING 10B-19-07 WERE HELD TO ESTABLISH THE LOCATION OF THE NEW RW ACQUIRED. THE FALSE CALLS SHOWN AS EXTENDING INTO PUBLIC RW ON THIS PLAT ARE FROM THE DEED DESCRIPTIONS AND ODOT DRAWING 10B-19-07 AND WERE USED TO PREVENT ANY GAPS IN THE PROPERTY ACQUIRED USING THE CENTER LINE STRIP DESCRIPTION. NO MONUMENTS WERE SET AT THE TRUE RW INTERSECTION POINTS.

THE BASIS OF BEARING AND THE POSITION OF MONUMENTS WERE ESTABLISHED WITH A LEICA GPS SYSTEM 1200 BASE AND A LEICA GNSS ROVER, WITH A BEARING OF S.48°33'17"E. 862.07' BETWEEN TO CENTER LINE MONUMENTS 1 AND 2 ON ADAMS AVENUE DESIGNATED AS DESCRIBED BY CS 005-2004 AND ODOT DRAWING 10B-19-07. THIS SURVEY UTILIZES THE ASSUMED COORDINATES FROM UNION COUNTY SURVEY 005-2004 CONVERTED FROM METRIC TO ENGLISH UNITS, THIS PROJECT USED THE CONVERSION OF 1 FOOT=0.3048 METERS.

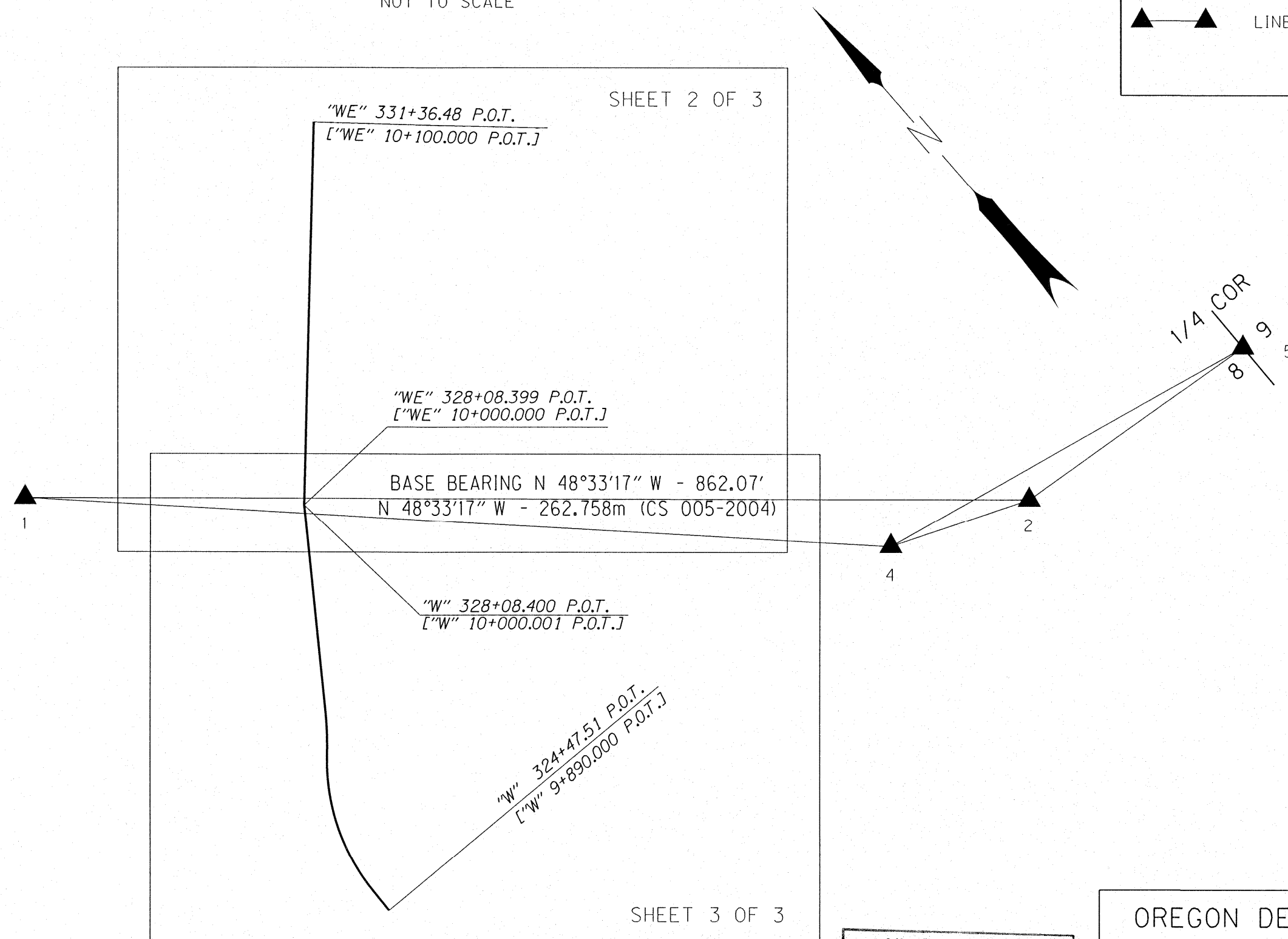
FOUND MONUMENT COORDINATE TABLE, ASSUMED COORDINATES

PT. NO.	NORTHING	EASTING	DATE	DESCRIPTION
1	612,379.61	8,826,219.52	10/17/13	FOUND 2 1/2" BRASS CAP MKD. BAGETT-GRIFFITH & ASSOC., OPLS 644, USED 1/8" DRILL MARK FOR POSITION (CS 13-88)
2	611,809.00	8,826,865.72	10/17/13	FOUND 2 1/2" BRASS CAP MKD. BAGETT-GRIFFITH & ASSOC., OPLS 644, USED 1/8" DRILL MARK FOR POSITION (CS 13-88)
4	611,857.52	8,826,750.14	10/17/13	FOUND 5/8" IRON ROD (CS 23-79)
5	611,740.77	8,827,524.18	10/17/13	FOUND 2 1/2" BRASS CAP IN MONUMENT BOX FOR 1/4 COR. OF SEC. 8 AND 9 (CS 13-88)

REFERENCES

- UNION COUNTY MICROFILM 113898
- UNION COUNTY DOCUMENT 124952
- UNION COUNTY DOCUMENT 125926
- UNION COUNTY DOCUMENT 140482
- UNION COUNTY DOCUMENT 147820
- UNION COUNTY DOCUMENT 965722
- UNION COUNTY DOCUMENT 996160
- UNION COUNTY DOCUMENT 20043733
- UNION COUNTY DOCUMENT 20045414
- UNION COUNTY DOCUMENT 20046246
- UNION COUNTY DOCUMENT 20060136
- UNION COUNTY DOCUMENT 20080157
- HONAN'S ADDITION TO LA GRANDE
- UNION COUNTY SURVEY 32-65
- UNION COUNTY SURVEY 23-79
- UNION COUNTY SURVEY 20-87
- UNION COUNTY SURVEY 13-88
- UNION COUNTY SURVEY 18-89
- UNION COUNTY SURVEY 026-2001
- UNION COUNTY SURVEY 039-2001
- UNION COUNTY SURVEY 005-2004
- ODOT DRAWING 10B-19-7

BASIS OF BEARING, SHEET LAYOUT AND CONTROL NETWORK SCHEMATIC
NOT TO SCALE



LEGEND

- ▲ FOUND MONUMENT USED AS NETWORK POINT
- ▲—▲ LINES OF OBSERVATION

REGISTERED PROFESSIONAL LAND SURVEYOR

Robert E. Butler

OREGON
July 25, 1995
ROBERT ERICH BUTLER
2733

EXPIRES: 12/31/2015

NETWORK BEARINGS AND DISTANCES

FROM	TO	BEARING	DISTANCE
1	2	S. 48°33'17"E.	862.07'
1	4	S. 45°27'52"E.	744.40'
2	4	N. 67°13'36"W.	125.35'
2	5	S. 84°05'03"E.	661.99'
4	5	S. 81°25'22"E.	782.80'

UNION COUNTY SURVEYOR

Date Received 11/17/14

Date Filed 11/18/14

Robert E. Butler

File No. 036-2014

OREGON DEPARTMENT OF TRANSPORTATION

RIGHT-OF-WAY MONUMENTATION MAP

NETWORK OPTION

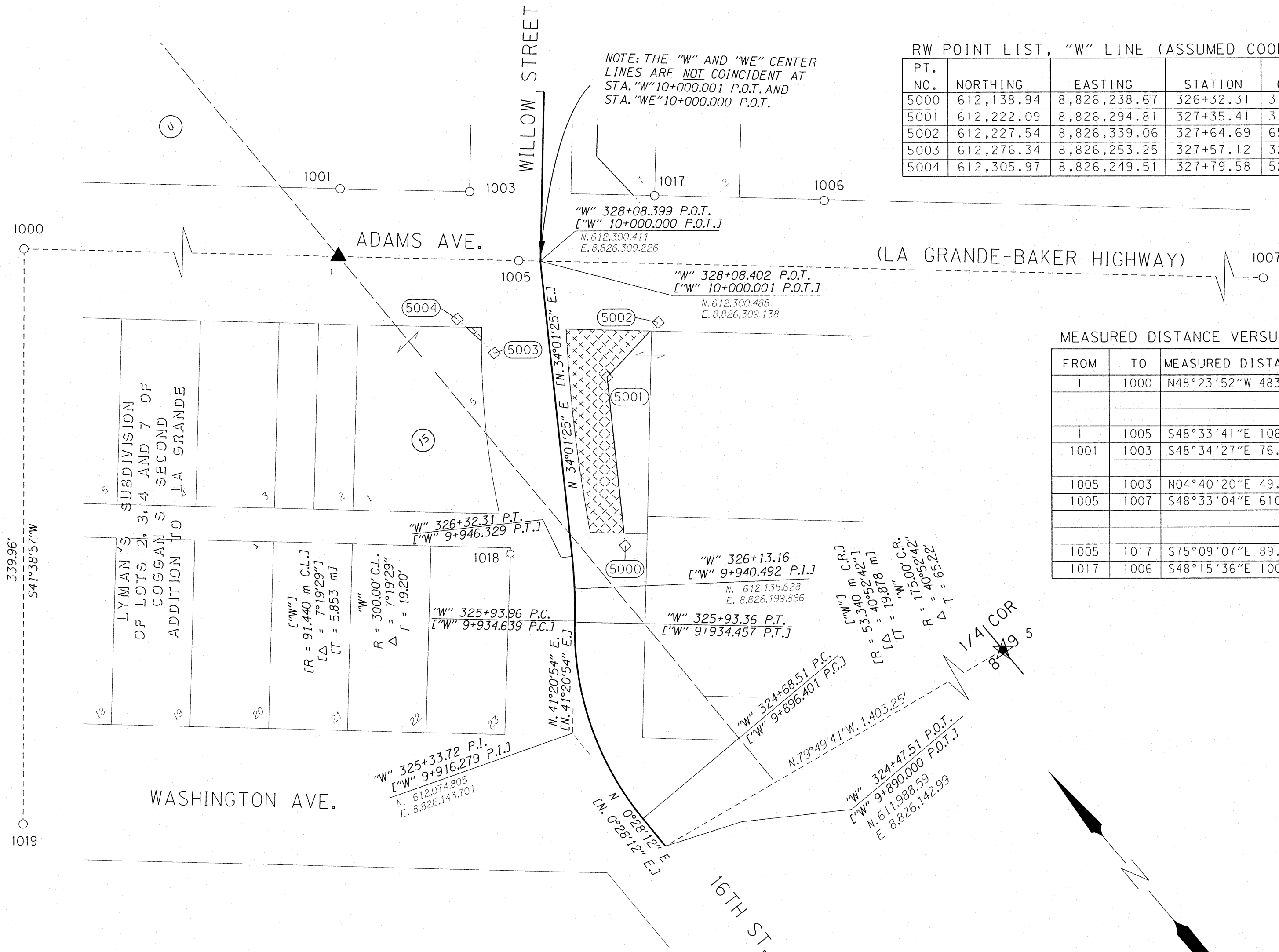
U.S. 30: WILLOW STREET (LA GRANDE) SIGNAL
LA GRANDE - BAKER HIGHWAY NO. 066
UNION COUNTY

ODOT REGION 5
3012 ISLAND AVE.
LA GRANDE, OR. 97850

NOVEMBER, 2014
NOT TO SCALE
SHEET 1 OF 3

SURVEY NUMBER 036-2014

NE 1/4, SEC. 8, T. 3 S., R. 38 E., W.M.



RW POINT LIST, "W" LINE (ASSUMED COORDINATES)

PT. NO.	NORTHING	EASTING	STATION	OFFSET	METRIC STATION	METRIC OFFSET	DESCRIPTION
5000	612,138.94	8,826,238.67	326+32.31	31.99 RT.	9+946.329	9.750 RT.	FALSE CALL POINT, NO MONUMENT SET
5001	612,222.09	8,826,294.81	327+35.41	31.99 RT.	9+977.752	9.750 RT.	RIGHT OF WAY POINT, NO MONUMENT SET
5002	612,227.54	8,826,339.06	327+64.69	65.62 RT.	9+986.676	20.000 RT.	FALSE CALL, NO MONUMENT SET
5003	612,276.34	8,826,253.25	327+57.12	32.81 LT.	9+984.370	10.000 LT.	FALSE CALL, NO MONUMENT SET
5004	612,305.97	8,826,249.51	327+79.58	52.49 LT.	9+991.215	16.000 LT.	FALSE CALL, NO MONUMENT SET

MEASURED DISTANCE VERSUS RECORD DISTANCE

FROM	TO	MEASURED DISTANCE	RECORD DISTANCE (SURVEY NUMBER)
1	1000	N48°23'52"W 483.83'	S48°23'52"E 147.471m (CS 005-20004); N48°23'39"W 483.83' (CS 13-88)
			N48°23'39"W 483.80' (CS 026-2001); N48°23'39"W 483.80' (CS 039-2001)
			S48°23'23"E 483.76' (CS 41-82)
1	1005	S48°33'41"E 106.77'	S48°33'41"E 32.554m (CS 005-20004); N48°33'27"W 106.78' (CS 41-82)
1001	1003	S48°34'27"E 76.79'	S48°34'24"E 23.406m (CS 005-2004); N48°33'09"E 76.73' (CS 026-2001); N48°33'09"E 76.73' (CS 039-2001)
1005	1003	N04°40'20"E 49.91'	N04°40'18"W 15.213m (CS 005-2004)
1005	1007	S48°33'04"E 610.01'	S48°33'04"E 185.931m (CS 005-2004); N48°33'17"W 610.00' (CS 13-88); S48°33'09"E 609.98' (CS 026-2001); N48°33'07"W 609.98' CS 004-2001
			S48°33'27"E (CS 23-79; 19-81, 20-87, 034-90)
1005	1017	S75°09'07"E 89.05'	S75°09'05"E 27.143m (CS 005-2004)
1017	1006	S48°15'36"E 100.55'	S48°15'38"E 30.647m (CS 005-2004)

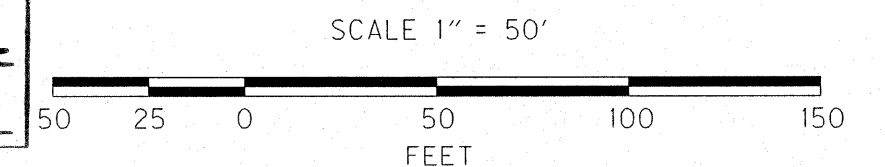
LEGEND	
▲	NETWORK POINT
◇	CALCULATED R/W POINT
○	FND. MONUMENT AS NOTED IN TABLE
(5000)	R/W POINT NO.
⊠	MONUMENT DESTROYED DURING CONSTRUCTION
▨	NEW R/W PURCHASE
---	FALSE CALL LINE
---	1/16TH SECTION LINE
---	R/W PURCHASE CENTER LINE
[]	RECORD DATA PER ODOT DRG. 10B-19-07

FOUND MONUMENT COORDINATE TABLE, ASSUMED COORDINATES

PT. NO.	NORTHING	EASTING	STATION	OFFSET	DESCRIPTION
1	612,379.61	8,826,219.52	"WE" 328+08.48	119.66 LT.	FND. 2 1/2" BR. CAP MKD. BAGETT-GRIFFITH & ASSOC., OPLS 644, USED 1/8" DRILL MARK FOR POSITION; (CS 13-88)
5	611,740.77	8,827,524.18	N/A	N/A	FND. 2 1/2" BRASS CAP IN MONUMENT BOX FOR CORNER OF SECTIONS 8 AND 9 (CS 13-88)
1000	612,700.85	8,825,857.73	N/A	N/A	FND. 2" BR. CAP, SEE POINT NO. 1 FOR DESCRIPTION (CS 13-88)
1001	612,409.50	8,826,246.05	"WE" 328+48.45	119.53 LT.	FND. 5/8" IRON ROD W/PLASTIC CAP MKD. "BGB SURVEY MARKER" (CS 039-2001)
1003	612,358.69	8,826,303.63	"WE" 328+48.41	42.74 LT.	FND. 5/8" IRON ROD W/PLASTIC CAP MKD. "BGB SURVEY MARKER" (CS 039-2001)
1005	612,308.94	8,826,299.56	"WE" 328+08.41	12.89 LT.	FND. 2" BR. CAP, SEE POINT NO. 1 FOR DESCRIPTION (CS 13-88)
1006	612,219.18	8,826,460.67	"WE" 328+47.62	167.31 RT.	FND. 1" IRON PIPE (CS 41, 32-65, 026-2001)
1007	611,905.15	8,826,756.80	N/A	N/A	FND. 2" BR. CAP, SEE POINT NO. 1 FOR DESCRIPTION (CS 13-88)
1017	612,286.12	8,826,385.64	"WE" 328+48.22	66.77 RT.	FND. 5/8" IRON ROD (CS 58-75 DESCRIBES "X" IN SIDEWALK)
1018	612,179.51	8,826,183.89	"W" 326+38.06	36.12 LT.	5/8" IRON ROD (CS 74-80); DESTROYED BY CONSTRUCTION, NOT RESET
1019	612,446.82	8,825,631.80	N/A	N/A	FND. "+" CHISELED IN CURB (CS 18-89)

FND. = FOUND
BR. = BRASS
MKD. = MARKED
CS = COUNTY SURVEY
W/ = WITH

UNION COUNTY SURVEYOR
Date Received 11/17/14
Date Filed 11/18/14
By [Signature]
File No. 036-2014



REGISTERED PROFESSIONAL LAND SURVEYOR

Robert E. Butler

OREGON July 25, 1995 ROBERT ERICH BUTLER 2733

EXPIRES: 12/31/2015

OREGON DEPARTMENT OF TRANSPORTATION



RIGHT-OF-WAY MONUMENTATION MAP NETWORK OPTION

U.S. 30: WILLOW STREET (LA GRANDE) SIGNAL LA GRANDE - BAKER HIGHWAY NO. 066 UNION COUNTY

ODOT REGION 5 3012 ISLAND AVE. LA GRANDE, OR. 97850

NOVEMBER, 2014 SCALE: 1 IN. = 50 FT. SHEET 2 OF 3

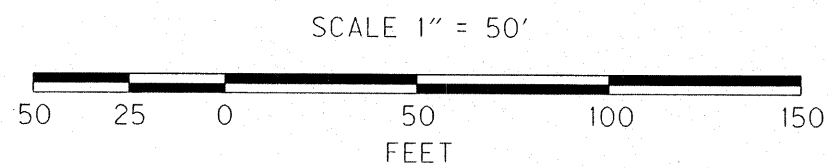
SURVEY NUMBER 036-2014

NE 1/4, SEC. 8, T. 3 S., R. 38 E., W.M.

MEASURED DISTANCE VERSUS RECORD DISTANCE

FROM	TO	MEASURED DISTANCE	RECORD DISTANCE (SURVEY NUMBER)
1	1000	N48°23'52"W 483.83'	S48°23'52"E 147.471m (CS 005-20004); N48°23'39"W 483.83' (CS 13-88) N48°23'39"W 483.80' (CS 026-2001); N48°23'39"W 483.80' (CS 039-2001) S48°23'23"E 483.76' (CS 41-82)
1	1005	S48°33'41"E 106.77'	S48°33'41"E 32.554m (CS 005-20004); N48°33'27"W 106.78' (CS 41-82)
1001	1003	S48°34'27"E 76.79'	S48°34'24"E 23.406m (CS 005-2004); N48°33'09"E 76.73' (CS 026-2001); N48°33'09"E 76.73' (CS 039-2001)
1003	1009	N41°24'02"E 429.98'	N41°24'02"E 131.058m (CS 005-2004); S41°27'43"E 429.94' (CS 026-2001); S41°27'43"E 429.94' J (CS 039-2001)
1005	1003	N04°40'20"W 49.91'	N04°40'18"W 15.213m (CS 005-2004)
1005	1007	S48°33'04"E 610.01'	S48°33'04"E 185.931m (CS 005-2004); N48°33'17"W 610.00' (CS 13-88); S48°33'09"E 609.98' (CS 026-2001); N48°33'07"W 609.98' CS 004-2001 S48°33'27"E (CS 23-79; 19-81, 20-87, 034-90)
1005	1017	S75°09'07"E 89.05'	S75°09'05"E 27.143m (CS 005-2004)
1014	1015	S48°19'58"E 200.23'	S48°19'59"E 61.030m (CS 005-2004); N48°29'34"W 199.78' (CS 026-2001)
1015	1016	N41°28'45"E 129.87'	N41°28'48"E 39.583m (CS 005-2004); N41°27'43"E 129.91' (CS 026-2001)
1017	1006	S48°15'36"E 100.55'	S48°15'38"E 30.647m (CS 005-2004)

LEGEND	
▲	GPS NETWORK POINT
◇	CALCULATED R/W POINT
○	FND. MONUMENT AS NOTED
⊙	MON. DESTROYED BY CONSTRUCTION, NOT REPLACED
▨	NEW R/W PURCHASE
⋯	FALSE CALL LINE
---	1/16 TH SECTION LINE
—	R/W PURCHASE CENTER LINE
(5000)	R/W POINT NO.
[]	RECORD DATA PER ODOT DRG. 10B-19-07



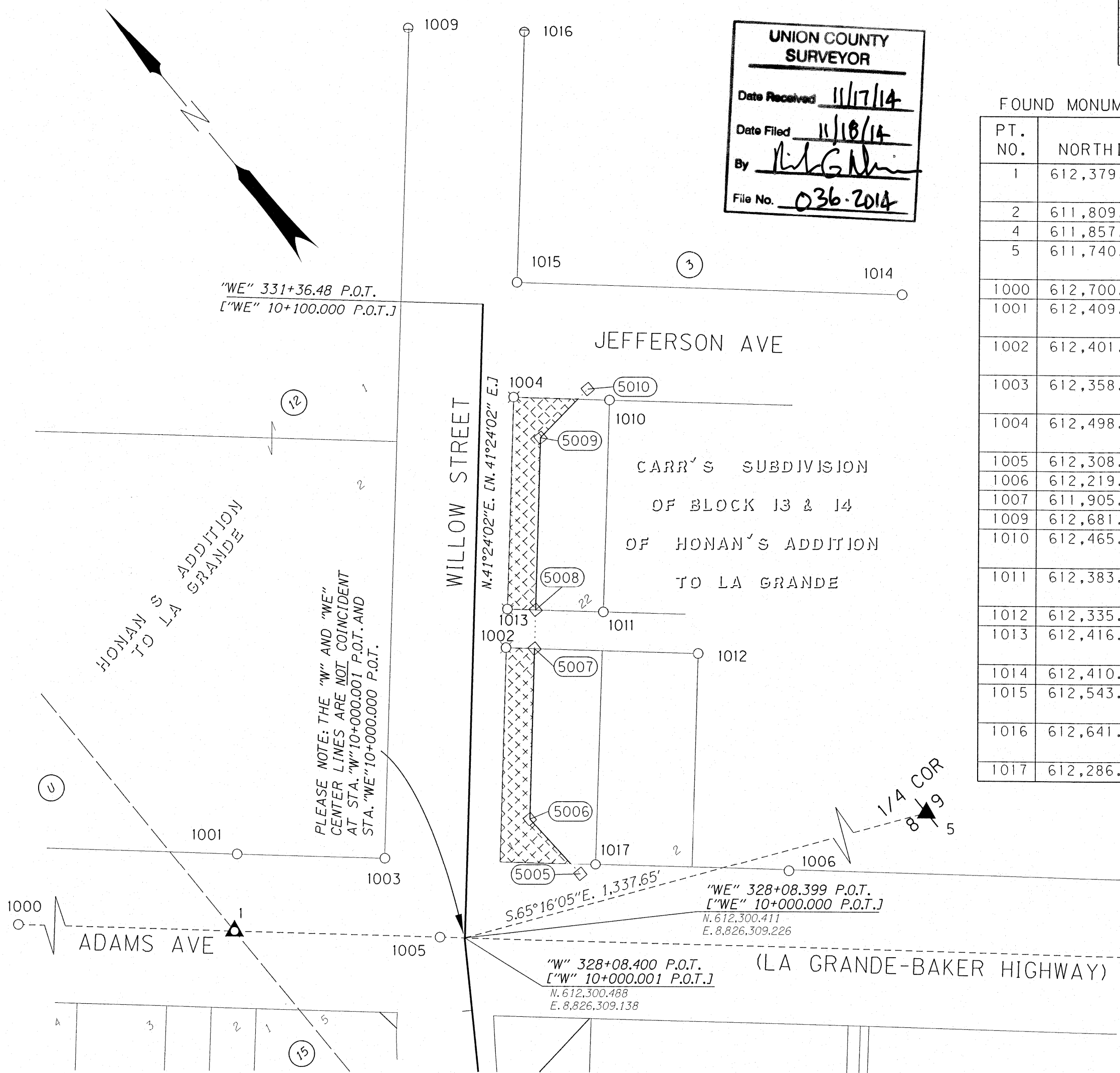
R/W POINT LIST, "WE" LINE (ASSUMED COORDINATES)

PT. NO.	NORTHING	EASTING	STATION	OFFSET	METRIC STATION	METRIC OFFSET	DESCRIPTION
5005	612,287.42	8,826,376.50	328+43.14	59.06 RT.	10+010.589	18.000 RT.	FALSE CALL, NO MONUMENT SET
5006	612,326.01	8,826,374.44	328+70.73	31.99 RT.	10+019.000	9.750 RT.	RIGHT OF WAY POINT, NO MONUMENT SET
5007	612,391.74	8,826,432.39	329+58.36	31.99 RT.	10+045.677	9.750 RT.	RIGHT OF WAY POINT, NO MONUMENT SET
5008	612,406.69	8,826,445.57	329+78.29	31.99 RT.	10+051.783	9.750 RT.	RIGHT OF WAY POINT, NO MONUMENT SET
5009	612,473.67	8,826,504.63	330+67.59	31.99 RT.	10+079.000	9.750 RT.	RIGHT OF WAY POINT, NO MONUMENT SET
5010	612,477.42	8,826,539.64	330+93.56	55.77 RT.	10+086.916	17.000 RT.	FALSE CALL, NO MONUMENT SET

FOUND MONUMENT COORDINATE TABLE, ASSUMED COORDINATES

PT. NO.	NORTHING	EASTING	STATION	OFFSET	DESCRIPTION
1	612,379.61	8,826,219.52	"WE"328+08.48	119.66 LT.	FND. 2 1/2" BR. CAP MKD. BAGETT-GRIFFITH & ASSOC., OPLS 644, USED 1"8" DRILL MARK FOR POSITION; CS 13-88
2	611,809.00	8,826,865.72	N/A	N/A	FND. 2 1/2" BR. CAP, SEE POINT NO. 1 FOR DESCRIPTION (CS 13-88)
4	611,857.52	8,826,750.14	N/A	N/A	FND. 5/8" IRON ROD (CS 23-79)
5	611,740.77	8,827,524.18	N/A	N/A	FND. 2 1/2" BRASS CAP IN MONUMENT BOX FOR 1/4 CORNER OF SECTIONS 8 AND 9 (CS 13-88)
1000	612,700.85	8,825,857.73	N/A	N/A	FND. 2" BR. CAP, SEE POINT NO. 1 FOR DESCRIPTION (CS 13-88)
1001	612,409.50	8,826,246.05	"WE"328+48.45	119.53 LT.	FND. 5/8" IRON ROD W/PLASTIC CAP MKD. "BGB SURVEY MARKER" (CS 039-2001)
1002	612,401.62	8,826,421.26	N/A	N/A	5/8" IRON ROD; CS 58-75; MONUMENT DESTROYED BY CONSTRUCTION, NOT RESET
1003	612,358.69	8,826,303.63	"WE"328+08.48	119.66 LT.	FND. 5/8" IRON ROD W/PLASTIC CAP MKD. "BGB SURVEY MARKER" (CS 039-2001)
1004	612,498.81	8,826,507.39	N/A	N/A	5/8" IRON ROD W/PLASTIC CAP MKD. "WESTLAKE CONSULTANTS"; CS 026-2001 MONUMENT DESTROYED BY CONSTRUCTION, NOT RESET
1005	612,308.94	8,826,299.56	"WE"328+08.41	12.89 LT.	FND. 2" BR. CAP, SEE POINT NO. 1 FOR DESCRIPTION (CS 13-88)
1006	612,219.18	8,826,460.67	"WE"328+47.62	167.31 RT.	FND. 1" IRON PIPE (CS 41, 32-65, 026-2001)
1007	611,905.15	8,826,756.80	N/A	N/A	FND. 2" BR. CAP, SEE POINT NO. 1 FOR DESCRIPTION (CS 13-88)
1009	612,681.22	8,826,587.98	N/A	N/A	FND. 1" IRON PIPE CS 026-2001 AND 039-2001 LIST AS IRON ROD J
1010	612,465.79	8,826,544.69	"WE"330+88.17	67.25 RT.	FND. 5/8" IRON ROD W/PLASTIC CAP MKD. "WESTLAKE CONSULTANTS"; CS 026-2001
1011	612,383.38	8,826,471.94	"WE"329+78.24	67.18 RT.	FND. 5/8" IRON ROD W/PLASTIC CAP MKD. "WESTLAKE CONSULTANTS"; CS 026-2001
1012	612,335.30	8,826,496.02	"WE"103+38.94	117.04 RT.	FND. 5/8" IRON ROD (CS 32-65, CS 026-2001)
1013	612,416.40	8,826,434.58	N/A	N/A	5/8" IRON ROD W/PLASTIC CAP MKD. "WESTLAKE CONSULTANTS"; CS 026-2001 MONUMENT DESTROYED BY CONSTRUCTION, NOT RESET
1014	612,410.69	8,826,696.66	N/A	N/A	FND. 5/8" IRON ROD, BENT (CS 026-2001)
1015	612,543.81	8,826,547.08	N/A	N/A	FND. 5/8" IRON ROD W/PLASTIC CAP MKD. "WESTLAKE CONSULTANTS" (CS 026-2001)
1016	612,641.10	8,826,633.10	N/A	N/A	FND. 5/8" IRON ROD W/PLASTIC CAP MKD. "WESTLAKE CONSULTANTS" (CS 026-2001)
1017	612,286.12	8,826,385.64	"WE"328+48.22	66.77 RT.	FND. 5/8" IRON ROD (CS 58-75 DESCRIBES "X" IN SIDEWALK)

UNION COUNTY SURVEYOR
 Date Received 11/17/14
 Date Filed 11/18/14
 By [Signature]
 File No. 036-2014



FND. = FOUND
 BR. = BRASS
 MKD. = MARKED
 CS = COUNTY SURVEY
 W/ = WITH

REGISTERED PROFESSIONAL LAND SURVEYOR
 Robert E. Butler
 OREGON July 25, 1995
 ROBERT ERICH BUTLER 2733
 EXPIRES: 12/31/2015

OREGON DEPARTMENT OF TRANSPORTATION
 RIGHT-OF-WAY MONUMENTATION MAP
 NETWORK OPTION
 U.S. 30: WILLOW STREET (LA GRANDE) SIGNAL
 LA GRANDE - BAKER HIGHWAY NO. 066
 UNION COUNTY

ODOT REGION 5
 3012 ISLAND AVE.
 LA GRANDE, OR. 97850
 NOVEMBER, 2014
 SCALE: 1 IN. = 50 FT.
 SHEET 3 OF 3

SURVEY NUMBER 036-2014