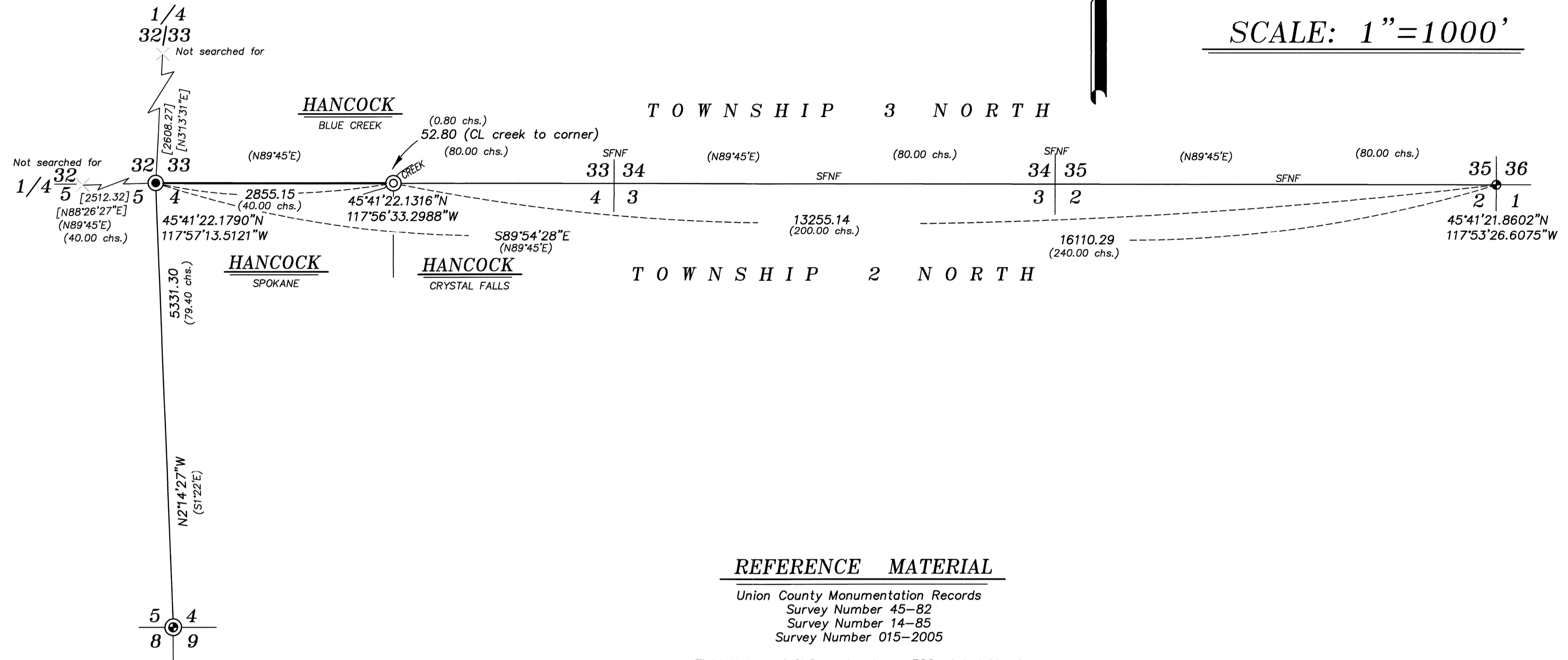


# BASIS OF BEARING

Geodetic North at the Southeast corner of Section 33,  
Township 3 North, Range 39 East of the Willamette  
Meridian, as determined by GPS observation

SCALE: 1" = 1000'



## REFERENCE MATERIAL

Union County Monumentation Records  
Survey Number 45-82  
Survey Number 14-85  
Survey Number 015-2005

Field Notes of GLO contract no. 382, dated March  
23, 1881, executed by Rufus S. Moore

### DEED REFERENCES

Microfilm Document Number 20134272  
Microfilm Document Number 20134274

## LEGEND

- Found 2" iron pipe with 2 1/2" brass cap, marked as per Union County Monumentation record 259-83R
- Found 5/8" iron pin, set by Survey Number 14-85, replaced deteriorated cap with 2 1/2" aluminum cap, marked as per Union County Monumentation records, filed separately
- ⊙ Found 2 1/2" aluminum pipe with 2 1/2" aluminum cap, marked as per Union County Monumentation record 268-83R
- ⊙ Set 2 1/2" aluminum pipe with 2 1/2" aluminum cap, marked as per Union County Monumentation records, filed separately
- ( ) Record measurement as per field notes of GLO contract no. 382, dated March 23, 1881, executed by Rufus S. Moore
- [ ] Record measurement as per Survey Number 45-82
- SFNF Corner searched for, not found

## NARRATIVE

This survey was done at the request of Patrick Marolla, on behalf of Hancock Forest Management, land manager for the land within. Mr. Marolla wanted to monument the South 1/4 corner of Section 33 prior to a timber harvest. I recover the Southwest corner of Section 33, set by Wayne Harris and the Southeast corner of Section 35, set by Gary Langlitz in Survey Number 14-85. I make a diligent search but could find no remaining evidence of original GLO corners between these two found monuments. A straight single proportion would place the South quarter corner of Section 33 on the West side of the creek. The original GLO field notes places this corner 80 links to the East of this creek. I find the corner set by Wayne Harris at the Southwest corner of Section 33 to have certain discrepancies to adjacent corners monumented at original GLO position. I therefore place the corner on line between the two found monuments, but at the record 0.80 chain call from the creek. I find this is harmonious with record distances to the Southeast corner of Section 35, though this creates a gross excess to the Southwest corner of Section 33.

Coordinates as shown hereon are in NAD-83(1999) horizontal datum. I find no other unusual conditions with this survey.



UNION COUNTY SURVEYOR	
Date Received	11/10/14
Date Filed	11/10/14
By	ALG
File No.	034-2014

<b>BAGETT, GRIFFITH &amp; BLACKMAN</b> 2006 Adams Avenue, LaGrande, Oregon Map of Survey		
Situate in Sections 2, 3, 4, 5, Township 2 North, and Section 32, 33, 34 and 35, Township 3 North, Range 39 East of the Willamette Meridian		
UNION COUNTY, OREGON		
SURVEYED FOR	Hancock Forest Management	
SURVEYED BY	J. S. H.	
Scale: 1" = 1000'	Drawn by:	J. S. H. Oct.-Nov. 2014

SURVEY NUMBER 034-2014