

NARRATIVE

This survey was performed at the request of Patrick Marolla on behalf of Hancock Forest Management, land manager for the land within. Mr. Marolla wanted the corners along the East and South line of the property shown hereon monumented and a portion of the South line marked with flagging and paint on adjacent trees in preparation for a timber harvest. I find and tie the monuments along the range line set by Survey Number 30-86. I could find no trace of the original East quarter corner of Section 12 and place this corner at proportionate position.

In 1938, a survey by Union County Engineer S.B. Morgan tied the alignment of High Valley Road with ties to the Southwest corner of Section 12 as well as the West quarter corner of Section 12. This map was obtained through Union County Road Department. I retrace the alignment of the road and find the as-built condition of the road to be harmonious with the measurements of the 1938 survey. I position these corners by retracement of this survey. I could find no remaining evidence of original corners at either location, however, the East quarter corner position falls within 3 feet of an old fence corner. I set a monument at the section corner position as established by this retracement of High Valley Road. I could find no remaining original evidence at the South quarter corner of Section 12 and place this corner at proportionate position. A fenceline as it follows the area marked with flagging falls 89-96 feet South of the property line.

I find no other unusual conditions with this survey..

BASIS OF BEARING

True Geodetic North at the corner common to Sections 5, 6, 7 and 8, Township 4 South, Range 41 East of the Willamette Meridian as determined by GPS observation (NAD-83 (1991) datum)

SCALE: 1"=500'

LEGEND

- Found 2 1/2" aluminum pipe with 2 1/2" aluminum pipe, marked as per Union County monumentation records, set by Survey Number 30-86
- ⊙ Set 2 1/2" aluminum pipe with 2 1/2" aluminum cap, marked as per Union County Monumentation records, filed separately
- ⊙ Set 5/8" x 30" iron pin with 2 1/2" aluminum cap, marked as per Union County monumentation records, filed separately
- /// Line parked with flagging and orange paint on adjacent trees
- () Record measurement as per GLO Contract No. 235, executed by John Stone and Benjamin Simpson, dated July 6, 1875
- { } Record measurement as per survey of Union-High Valley Market Road - Unit No. 3, executed by S.B. Morgan, dated October 1938
- [] Record measurement as per Survey Number 30-86
- x- Existing Fenceline
- - - Centerline

REFERENCE MATERIAL

HANCOCK
BLUECREEK

Union County Monumentation Records
Survey Number 30-86

Field Notes from GLO Contract No. 235, executed by John Stone and Benj. Simpson, dated July 6, 1875

Survey of Union-High Valley Market Road No. 3, for Union County Highway Department, completed by County Engineer S.B. Morgan, dated October 1938

DEED REFERENCES
Microfilm Document Number 20134275
Microfilm Document Number 155528

REGISTERED PROFESSIONAL LAND SURVEYOR

[Signature]

OREGON
JUNE 2, 2010
JEFFREY S. HSU
83571

Renewal Date: June 30, 2015

UNION COUNTY SURVEYOR

Date Received 10/30/14

Date Filed 10/30/14

By *[Signature]*

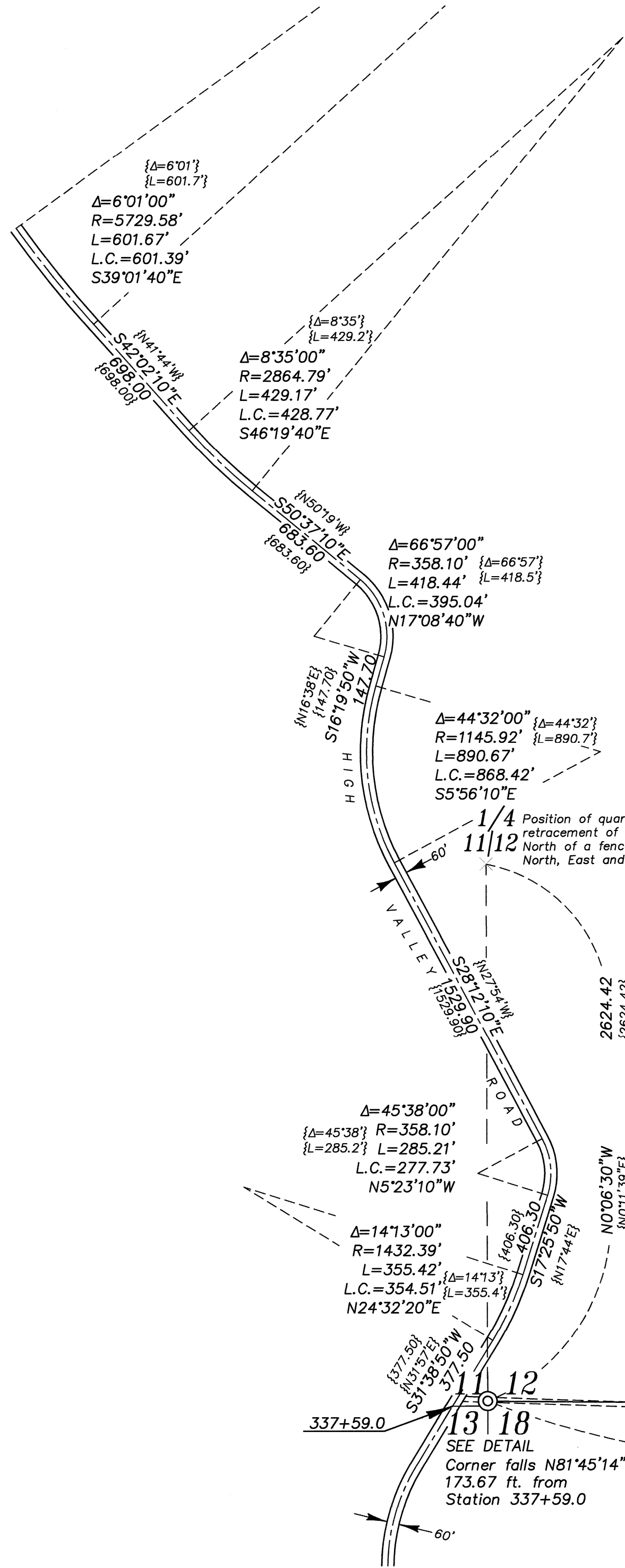
File No. 030-2014

BAGETT, GRIFFITH & BLACKMAN
2006 Adams Avenue, LaGrande, Oregon
Map of Survey

Situated in Section 12, Township 4 South, Range 40 East of the Willamette Meridian

UNION COUNTY, OREGON	
SURVEYED FOR	Hancock Forest Management
SURVEYED BY	J. S. H.
Scale: 1" = 500'	Drawn by: J. S. H. Oct. 2014

SURVEY NUMBER 030-2014



NOTE: Record bearing and distance computed by record
Δ Northing +2624.40 ft
Δ Eastings +8.9 ft.

Fenceline along marked line runs 89-96 feet South of property line.

5225.71
(80.10 chs)

SHEEHY
MF 155528