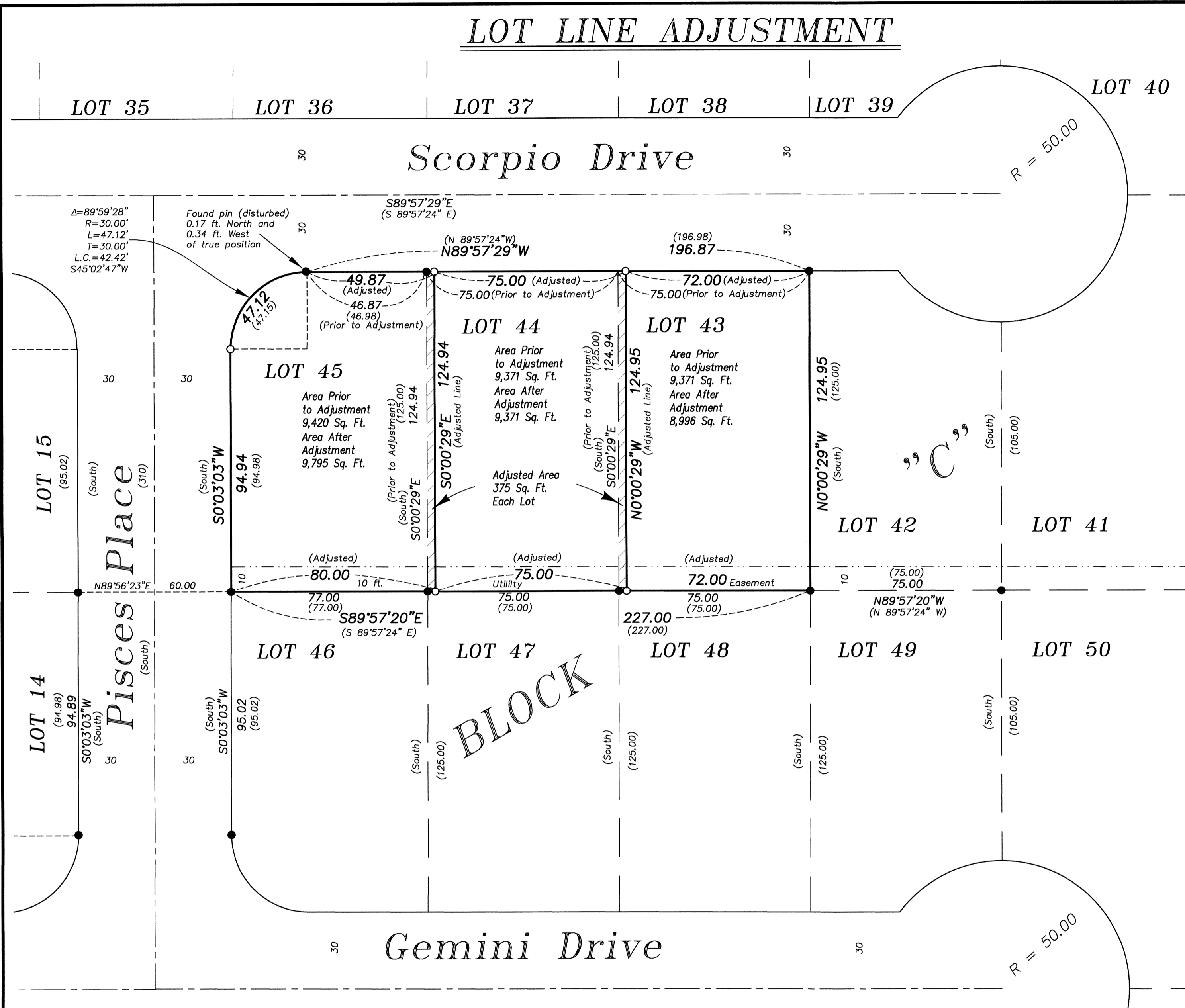


LOT LINE ADJUSTMENT



BASIS OF BEARING

Forward bearing as published by the U.S.C.
and G.S. from Δ COLLEGE to Δ VALLEY
Dated 1946.

SCALE: 1"=30'

REFERENCE MATERIAL

Plat of Sunny Hill Acres
Addition to La Grande
Deed Microfilm Number 20038395

LEGEND

- Found 1/2" iron pin set by the plat of Sunny Hill Acres Addition to La Grande
- Set 5/8"x30" iron pin with plastic cap marked "BGB SURVEY MARKER"
- Centerline
- - - Easement line
- Original Lot line
- () Record information of the plat of Sunny Hill Acres Addition

NARRATIVE

This survey was done at the request of Linda Hill, owner of Lots 43, 44 and 45. The purpose of this survey is to document a lot line adjustment between these three lots. The intention is to adjust the common line between Lots 43 and 44 East 3 feet, and to adjust the line between Lots 44 and 45 East 3 feet as well. I found the monumentation along the South side of these lots to be very harmonious with the record dimensions of the plat of Sunny Hill Acres Addition. The pins found along the North line were also very harmonious with the exception of the pin at the curve point on the South side of Scorpio Drive near the Northwest corner of Lot 45. I establish the curve point by extending the line between the found monuments at the Northeast corners of Lots 43 and 45 West record distance. I establish the curve point on the West line of Lot 45 by extending the line between the found pins on the West side of Lot 46 North. I place the curve point at a position that honors the 30 ft. radius called for in the plat. This is very relative to the plat information for the curve. I find no unusual conditions on this survey.

CITY APPROVAL

Approved as a Lot Line Adjustment this 27th day of October, 2014

Michael J. Boquist
Michael J. Boquist
City of La Grande Planner

UNION COUNTY SURVEYOR	
Date Received	10/27/14
Date Filed	10/27/14
By	<i>[Signature]</i>
File No.	029-2014

REGISTERED PROFESSIONAL LAND SURVEYOR
<i>[Signature]</i>
OREGON JULY 17, 1986 RICK G. ROBINSON 2219
Renewal Date: Dec. 31, 2014

BAGETT, GRIFFITH & BLACKMAN 2006 Adams Avenue, LaGrande, Oregon		
Map of Survey LOT LINE ADJUSTMENT Lots 43, 44 and 45, Block C Sunny Hill Acres Addition to La Grande UNION COUNTY, OREGON		
SURVEYED FOR	Linda Hill	
SURVEYED BY	R.G.R.	8/14
Scale: 1" = 30'	Drawn by: R.G.R.	8/14

SURVEY NUMBER 029-2014