

SW¹/₄ AND THE SE¹/₄ SEC. 15, T. 3 S., R. 38 E., W.M.

SURVEY NARRATIVE

THE PURPOSE OF THIS SURVEY IS TO DEFINE THE EXISTING RIGHT OF WAY BOUNDARY (RW) AND CONTROLLING CENTER LINE FOR A PORTION OF MCALISTER ROAD AND THE LA GRANDE - BAKER HIGHWAY (STATE HWY. 203) (US30) LOCATED IN THE SE¹/₄ AND THE SW¹/₄ OF SECTION 15, TOWNSHIP 3 SOUTH, RANGE 38 EAST, W.M. IN UNION COUNTY, OREGON. THIS SURVEY WAS DONE FOR THE OREGON DEPARTMENT OF TRANSPORTATION (ODOT) AS PART OF THE US30:TRAFFIC SIGNALS AT MCALISTER RD. PROJECT. FOR THIS PURPOSE WE ESTABLISHED A GPS NETWORK AND RECOVERED MONUMENTS OF RECORD.

THE HORIZONTAL ALIGNMENT FOR THE LA GRANDE BAKER HIGHWAY (STATE HWY. 203) (US30) WAS ESTABLISHED AS SHOWN ON ODOT DRAWING 8B-36-4 HOLDING THE POSITION OF BRASS CAP MONUMENTS FJ1001 AND FJ1002 AND HOLDING THE RECORD OFFSET OF 42.00 FOOT OFFSET AS DESCRIBED ON THE SAID CAPS AND SHOWN ON SAID DRAWING. A STATION OF 85+00.00 WAS ASSUMED AT RIGHT ANGLES TO MONUMENT FJ1002 AS DESCRIBED ON THE FACE OF THE CAP.

MCALISTER LANE WAS DECLARED A PUBLIC HIGHWAY BY THE UNION COUNTY COMMISSIONER'S JOURNAL IN BOOK A, PAGE 395; THE WIDTH OF RW IS NOT MENTIONED. UNION COUNTY RECORDS SHOW THE DATE FOR THIS JOURNAL ENTRY TO BE NOVEMBER 14, 1871 AND THE STANDARD WIDTH AT THAT TIME WAS 60 FEET, WHICH WAS USED FOR THIS SURVEY. EXISTING RW LINE FOR MCALISTER LANE ON THE SOUTH SIDE OF US HIGHWAY 30 WAS RETRACED AS BEING ON THE NORTH-SOUTH CENTER LINE OF SECTION 15 AS DESCRIBED BY UNION COUNTY SURVEY 37-71. THE POSITION OF MONUMENTS N.1/4.15, SE.15 AND FJ1003 WERE HELD FOR THIS PURPOSE.

THE BASIS OF BEARING AND NETWORK WERE ESTABLISHED WITH A LEICA GPS SYSTEM 1200 BASE AND A LEICA GNSS ROVER, USING A LOCAL DATUM PLANE (LDP) DERIVED FROM AN OPUS SOLUTION OBSERVED AT POINT MAC_OPUS. THE BEARINGS ON THIS PLAT ARE GRID BEARINGS WITH A BASE BEARING OF S.68°58'42"E. 3,283.26' FROM THE SOUTHEAST CORNER OF SECTION 15 TO POINT MAC_OPUS. THIS SURVEY UTILIZES A LDP WHICH IS RELATIVE TO THE OREGON COORDINATE SYSTEM (OCS) OF 1983 (2011), EPOCH 2010, NORTH ZONE, WITH RESPECT TO THE LOCAL LATITUDE AND GROUND ELEVATION. THE LDP COORDINATES DEFINE TRUE GROUND DISTANCES. TO CONVERT THE LDP COORDINATES, FOR THE CONTROL POINTS, TO THE OREGON COORDINATE SYSTEM OF 1983(CORS96, EPOCH 2002), NORTH ZONE, MULTIPLY THE LDP COORDINATES BY 0.99976982. THIS SURVEY WAS MEASURED USING INTERNATIONAL FEET.

REFERENCES

- UNION COUNTY SURVEY NO. 039-2002
- UNION COUNTY SURVEY NO. 37-71
- UNION COUNTY SURVEY NO. 43-77
- UNION COUNTY SURVEY NO. 122-78
- UNION COUNTY SURVEY NO. 043-1996R
- UNION COUNTY SURVEY NO. 001-2001
- UNION COUNTY SURVEY NO. 039-2002
- UNION COUNTY PARTITION PLAT 20140006T
- OREGON DEPT. OF TRANS. DRAWING 6B-35-9
- OREGON DEPT. OF TRANS. DRAWING 8B-36-4
- OREGON DEPT. OF TRANS. DRAWING 9B-01-04
- OREGON DEPT. OF TRANS. DRAWING 10B-20-36

REGISTERED
PROFESSIONAL
LAND SURVEYOR

Robert E. Butler

OREGON
July 25, 1995
ROBERT ERICH BUTLER
2733

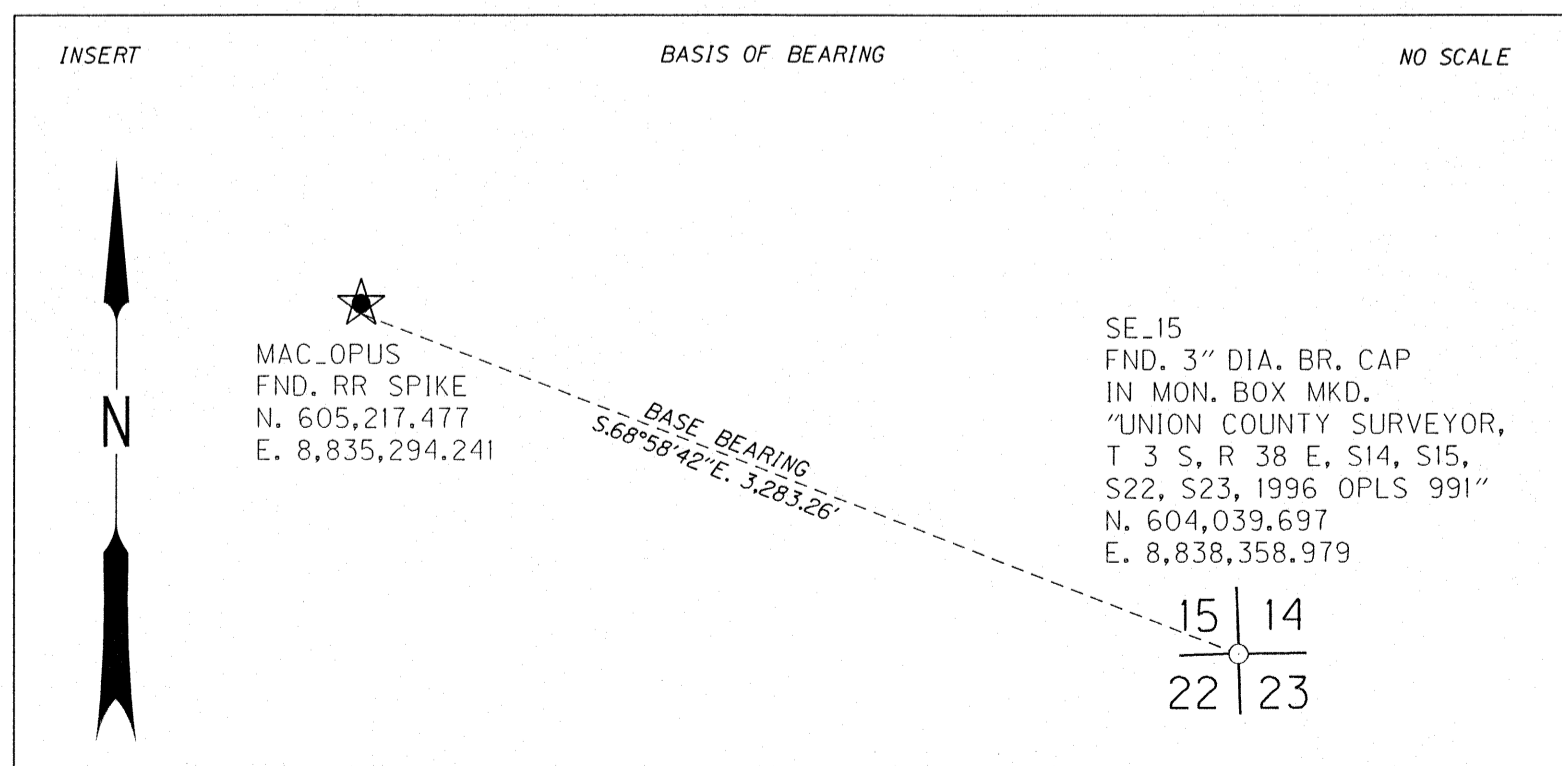
EXPIRES: 12/31/2015

BASIS OF BEARING AND
CONTROL NETWORK SCHEMATIC
NOT TO SCALE

NETWORK POINT COORDINATE TABLE

PT. NO.	LDP NORTHING	LDP EASTING	DESCRIPTION
MAC_OPUS	605,217.477	8,835,294.241	FND. RAILROAD SPIKE, ORIGIN UNKNOWN
MAC_01	604,675.966	8,835,775.730	SET PIN W/ALUMINUM CAP MARKED "ODOT"
MAC_02	604,347.131	8,836,451.235	SET PIN W/ALUMINUM CAP MARKED "ODOT"
MAC_03	605,157.184	8,835,743.229	SET PIN W/ALUMINUM CAP MARKED "ODOT"

LEGEND	
	OPUS POINT
	SET GPS STATION
	LINE OF OBSERVATION



UNION COUNTY SURVEYOR

Date Received 11/6/14

Date Filed 11/6/14

By [Signature]

File No. 028-2014

OREGON DEPARTMENT OF TRANSPORTATION
HORIZONTAL CONTROL, RECOVERY AND RETRACEMENT MAP
ENGLISH US30 TRAFFIC SIGNALS AT MCALISTER RD.
LA GRANDE - BAKER HIGHWAY
UNION COUNTY

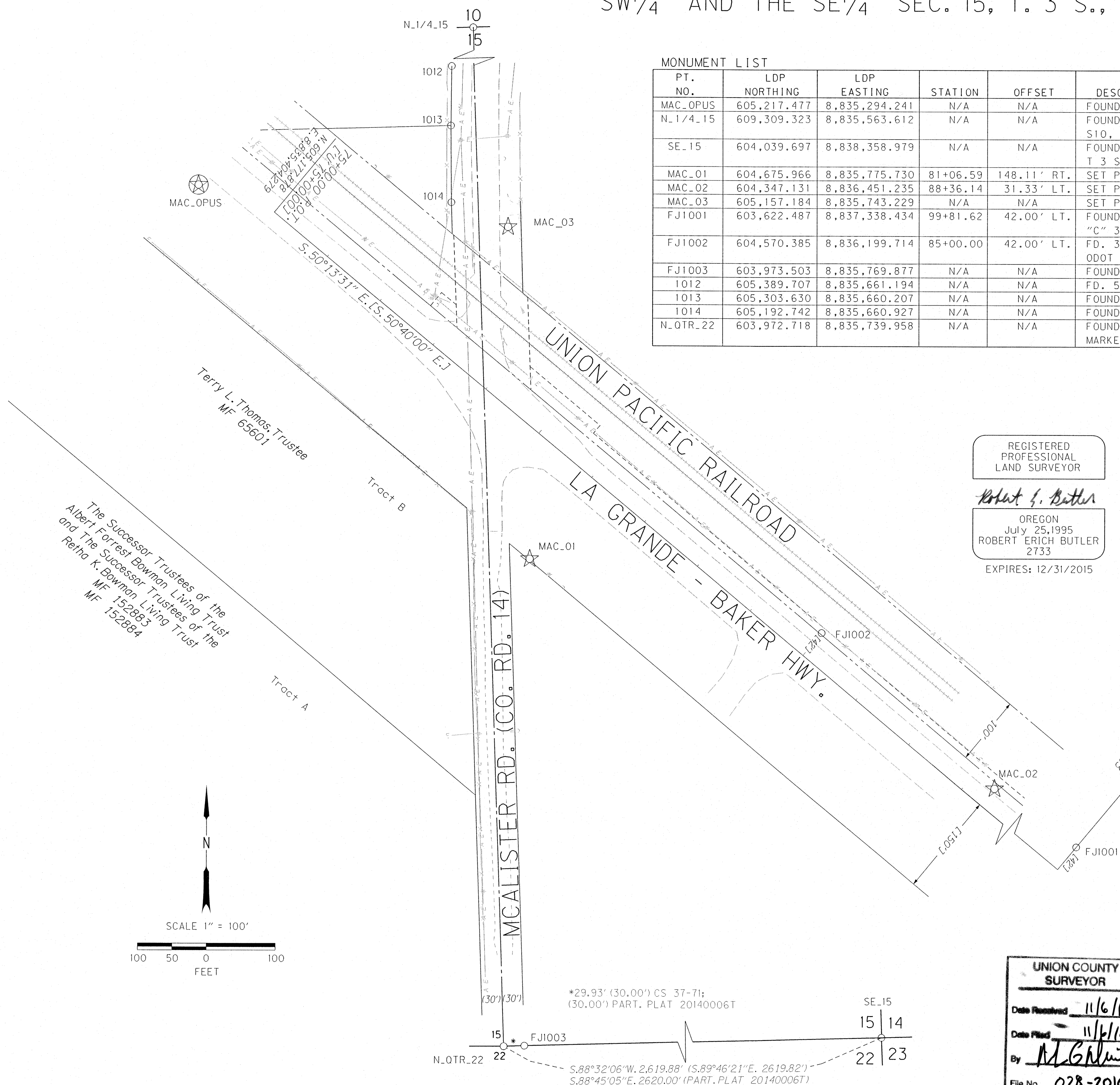
ODOT REGION 5
3012 ISLAND AVE.
LA GRANDE, OR. 97850-9497

SEPTEMBER 16, 2014
NOT TO SCALE
SHEET 1 OF 2

SW 1/4 AND THE SE 1/4 SEC. 15, T. 3 S., R. 38 E., W.M.

MONUMENT LIST

PT. NO.	LDP NORTHING	LDP EASTING	STATION	OFFSET	DESCRIPTION & REFERENCE DOCUMENTS
MAC_OPUS	605,217.477	8,835,294.241	N/A	N/A	FOUND RAILROAD SPIKE
N_1/4_15	609,309.323	8,835,563.612	N/A	N/A	FOUND 3" DIA. BR. CAP IN MON. BOX MKD. "T 3 S, R 38 E, S10, S15 2002 OPLS 2537"; (CS 043-1996R)
SE_15	604,039.697	8,838,358.979	N/A	N/A	FOUND 3" DIA. BR. CAP IN MON. BOX MKD. "UNION COUNTY SURVEYOR, T 3 S, R 38 E, S14, S15, S22, S23, 1996 OPLS 991"; (CS 043-1996R)
MAC_01	604,675.966	8,835,775.730	81+06.59	148.11' RT.	SET PIN W/ALUMINUM CAP MARKED "ODOT"
MAC_02	604,347.131	8,836,451.235	88+36.14	31.33' LT.	SET PIN W/ALUMINUM CAP MARKED "ODOT"
MAC_03	605,157.184	8,835,743.229	N/A	N/A	SET PIN W/ALUMINUM CAP MARKED "ODOT"
FJ1001	603,622.487	8,837,338.434	99+81.62	42.00' LT.	FOUND 3" DIA. BR. CAP MKD. "U" 99+81.55 P.O.T., "C" 333+51.59 P.O.T 42.00' LT."; ODOT DRG. 8B-36-4
FJ1002	604,570.385	8,836,199.714	85+00.00	42.00' LT.	FD. 3" DIA. BR. CAP MKD. "U" 85+00.00 P.O.T., 42.00' LT."; ODOT DRG. 8B-36-4
FJ1003	603,973.503	8,835,769.877	N/A	N/A	FOUND 5/8" DIA. REBAR, BENT APPROX. 12" BELOW SURFACE; CS 37-71
1012	605,389.707	8,835,661.194	N/A	N/A	FD. 5/8" DIA. REBAR, BENT APPROX. 0.8' BELOW GROUND; CS 2002-039
1013	605,303.630	8,835,660.207	N/A	N/A	FOUND PIN W/PLASTIC CAP APPROX. 0.5' BELOW GROUND; CS 2002-039
1014	605,192.742	8,835,660.927	N/A	N/A	FOUND PIN W/PLASTIC CAP MARKED, "AP&A"; CS 2002-039
N_QTR_22	603,972.718	8,835,739.958	N/A	N/A	FOUND 2 1/2" BRASS CAP 0.3' UNDER SURFACE OF GRAVEL ROAD MARKED T3S, R38E, 1/4 S15/S22, 2014, LS 83571



REGISTERED PROFESSIONAL LAND SURVEYOR
Robert E. Butler
 OREGON
 July 25, 1995
 ROBERT ERICH BUTLER
 2733
 EXPIRES: 12/31/2015

LEGEND

	OPUS POINT
	SET GPS POINT
	FOUND MONUMENT
	RECORD PER COUNTY SURVEY 37-71 OR AS NOTED
	RECORD PER ODOT DRAWING 8B-36-4
	EXISTING RIGHT-OF-WAY
	RAILROAD RIGHT-OF-WAY
	PROPERTY LINE
	EASEMENT LINE
	FENCE
	EDGE OF PAVEMENT
	SECTION LINE
	1/4 SECTION LINE

UNION COUNTY SURVEYOR
 Date Received 11/6/14
 Date Paid 11/6/14
 By *M. G. Blair*
 File No. 028-2014

OREGON DEPARTMENT OF TRANSPORTATION
 HORIZONTAL CONTROL, RECOVERY AND RETRACEMENT MAP
 ENGLISH US30 TRAFFIC SIGNALS AT McALISTER RD.
 LA GRANDE - BAKER HIGHWAY
 UNION COUNTY
 ODOT REGION 5
 3012 ISLAND AVE.
 LA GRANDE, OR. 97850-9497
 SEPTEMBER 16, 2014
 SCALE: 1" = 100'
 SHEET 2 OF 2