

BASIS OF BEARING

True geodetic North at the Southwest corner of Section 34, Township 2 North, Range 39 East of the Willamette Meridian, as determined by GPS observation

SCALE: 1" = 600'

LEGEND

- Found monument as noted, set by James Hambleton in Survey Number 108-77
- Found monument as noted, set by Barry Barbour in Survey Number 33-79
- Found monument as noted, set by W. Arthur Graham in Survey Number 18-62. Replaced with monument as noted.
- ⊙ Found monument as noted, as per Union County Monumentation Records
- Set 5/8"x30" iron pin with plastic cap marked BGB SURVEY MARKER
- ⊙ Set 5/8" x 30" iron pin with 2 1/2" aluminum cap, marked as per Union County Monumentation Records, filed separately
- ⊙ Set 2 1/2" x 30" aluminum pipe with aluminum cap marked as per Union County Monumentation records, filed separately
- [] Record measurement as per Survey Number 108-77
- { } Record measurement as per Survey Number 33-79
- () Record measurement as per Survey Number 44-84
- / / Record measurement as per Survey Number 82-78
- - Record measurement as per GLO contract no. 102, executed by Timothy Davenport, dated July 20, 1963
- Fenceline

REFERENCE MATERIAL

Union County Monumentation Records
 Survey Number 18-62
 Survey Number 108-77
 Survey Number 82-78
 Survey Number 33-79
 Survey Number 44-84
 Road Petition Number 412

Field notes of GLO contract no. 102, executed by Timothy Davenport, dated July 20, 1863
 Field notes of GLO contract no. 382, executed by Rufus S. Moore, dated March 23, 1881

DEED REFERENCES
 Microfilm Document Number 20134269
 Microfilm Document Number 20072298
 Microfilm Document Number 20063918
 Microfilm Document Number 20031475
 Microfilm Document Number 20003069
 Microfilm Document Number 124288
 Microfilm Document Number 994496
 Microfilm Document Number 82617
 Book 152, Page 76

NARRATIVE

This survey was done at the request of Patrick Marolla, on behalf of Hancock Forest Management, land manager for the land within. Mr. Marolla wanted the property boundary marked prior to a timber harvest. I recover the monuments as shown hereon. A portion of Section 27 and Section 34 had previously been broken by James Hambleton in Survey Number 108-77 and 82-78. The West line of Section 27 was retraced by Barry Barbour in Survey Number 33-79, where instead of accepting the pin set by James Hambleton (set by topographic call) for the quarter corner common to Section 27 and 28, he uses a proportionate position. I find Barbour's corner to be closer to a line between the controlling Section corners, and still within the tolerance of the topographic call and therefore accept the Barbour corner for the true quarter corner position. I find all other monuments controlling the section 27 placed within the tolerance of the time that they were set and accept their position as found on the ground.

W. Arthur Graham retraced and monumented the East line of Section 34 in Survey Number 18-62. Graham's survey was retraced and accepted by Hambleton in said survey 108-77. I find the truck axle marking the East quarter corner of Section 34 missing, and determine the original position by distance intersect from the two bearing trees. I find this to be harmonious with Graham survey, however, I witness the corner 10 feet to the North to prevent any further possible destruction of the monument, as the position is on a creek bank subject to erosion. The NE corner of section 34 was called to be a 36"x26"x11" stone. I find a stone 30"x27"x15" and bearing trees, but could find no marks on the stone. I drill a 5/8" iron pin into the center of the stone for the true corner position. This would be harmonious with distances if measured from the face of the trees.

In Survey Number 108-77, James Hambleton accepts the intersection of a fence corner and the centerline of the county road for the South quarter corner of Section 34, but does not monument the position. I find from the legal description of the road petition for this county road (Number 412) that the centerline is intended to follow the aliquot line in this area. I also find that the fenceline is relatively harmonious with original GLO distances. The existing fenceline along the North/South center of section (in the North portion of the section) is very harmonious with this position as well. I therefore use the same methodology to establish the South quarter corner of Section 34. I set a witness corner 30 feet North of the true corner position. I find fences to be off the true property line as shown hereon. There is an access road along much of the Hancock property that skirts off the property line at the Center-East 1/16th of Section 27 as shown in the detail.

I find no other unusual conditions with this survey.

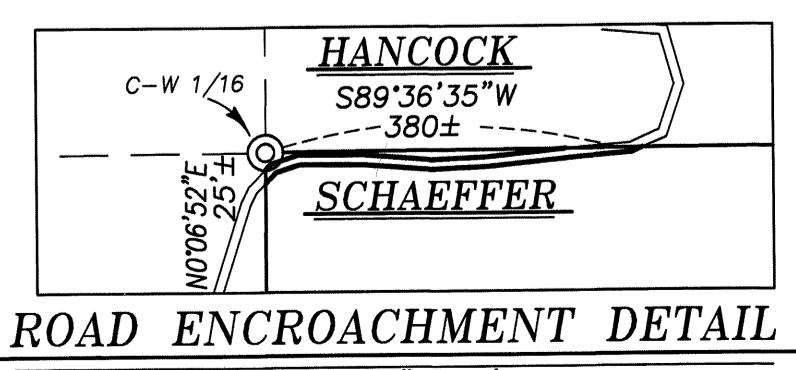
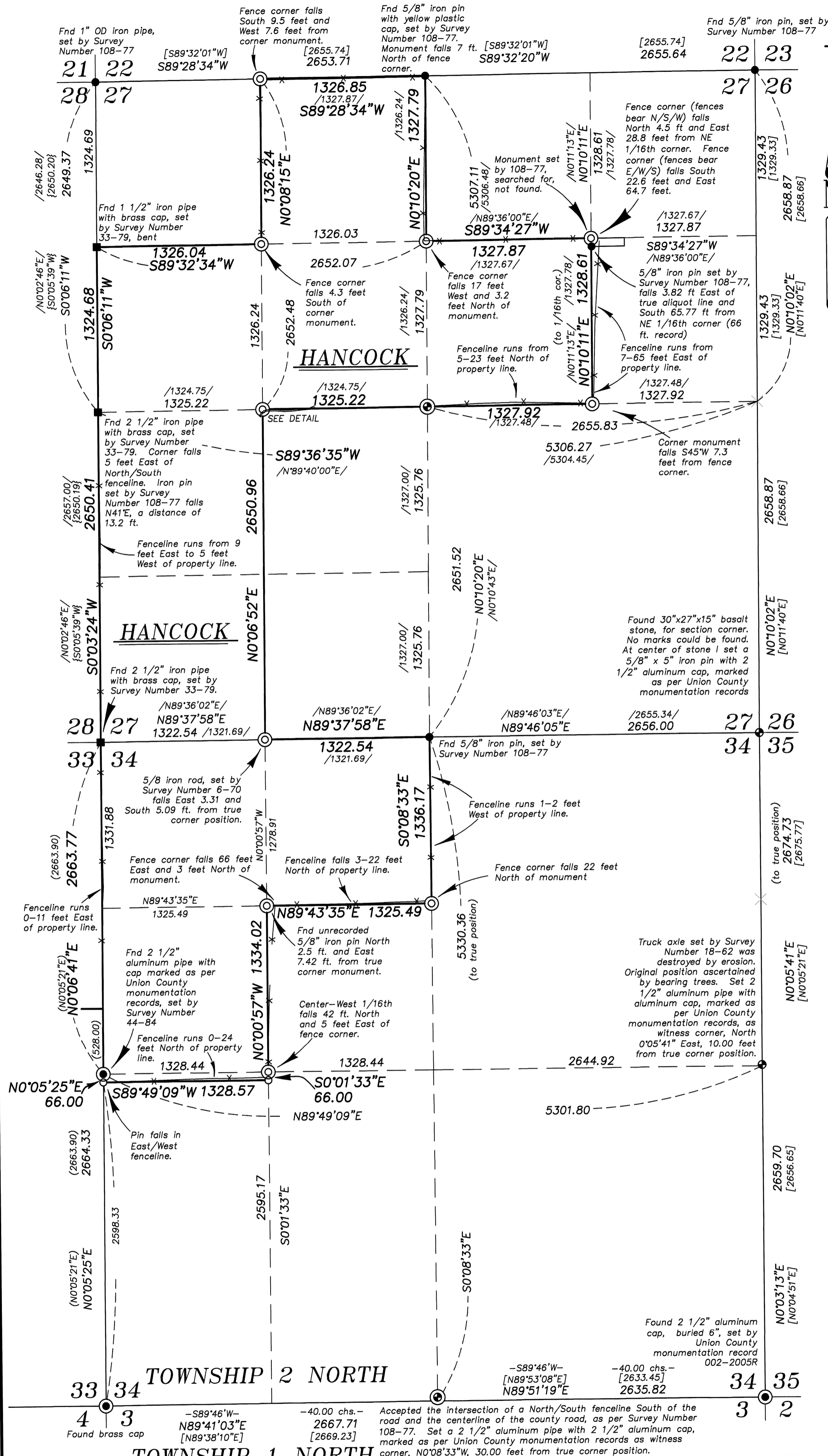
BAGETT, GRIFFITH & BLACKMAN
 2006 Adams Avenue, LaGrande, Oregon
 Map of Survey

Situate in Sections 27 and 34, Township 2 North, Range 39 East of the Willamette Meridian

UNION COUNTY, OREGON

SURVEYED FOR	Hancock Forest Management
SURVEYED BY	J. S. H.
Scale: 1" = 600'	Drawn by: J. S. H. Aug.-Sept. 2014

SURVEY NUMBER 025-2014



REGISTERED PROFESSIONAL LAND SURVEYOR
 JEFFREY S. HSU
 OREGON JUNE 2, 2010
 83571
 Renewal Date: June 30, 2015

UNION COUNTY SURVEYOR
 Date Received 9/5/14
 Date Filed 9/5/14
 By [Signature]
 File No. 025-2014

Accepted the intersection of a North/South fenceline South of the road and the centerline of the county road, as per Survey Number 108-77. Set a 2 1/2" aluminum pipe with 2 1/2" aluminum cap, marked as per Union County monumentation records as witness corner, N0°08'33"W, 30.00 feet from true corner position.

TOWNSHIP 1 NORTH

TOWNSHIP 2 NORTH

ROAD ENCROACHMENT DETAIL
 SCALE 1" = 200'