

BASIS OF BEARING

Solar observation taken at the Southwest corner of Section 15, Township 3 South, Range 40 East of the Willamette Meridian.

SCALE: 1" = 1000'

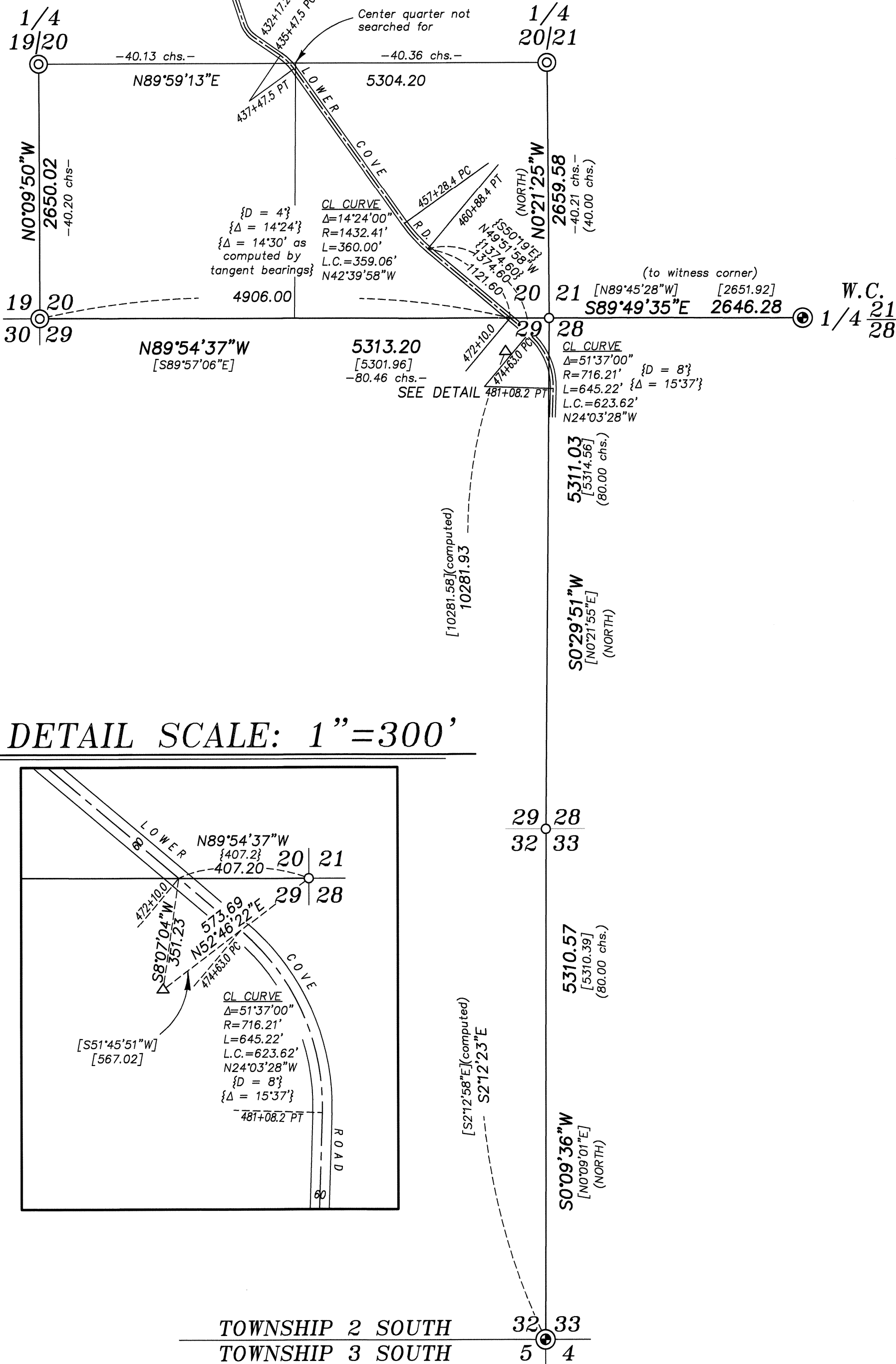
LEGEND

- ⊙ Found 2 1/2" aluminum pipe with cap marked as per Union County Monumentation Records, set by Survey Number 13-86
- ⊙ Set 2 1/2" x 30" aluminum pipe with cap marked as per Union County Monumentation records, filed separately
- Set 5/8" x 30" copperclad iron rod with 2 1/2" aluminum cap, marked as per Union County Monumentation records, filed separately
- △ Found brass cap in boulder marked R-12 1937, set by U.S. Bureau of Reclamation
- [] Record measurement as per Survey Number 13-86
- { } Record measurement as per survey for Union County Highway Department, executed by Roscoe Neal, dated 12-7-1928
- - Record measurement as per Old Book Survey Page 144
- () Record measurement as per GLO Field Notes of contract No 103, executed by David Thompson, dated September 3, 1863

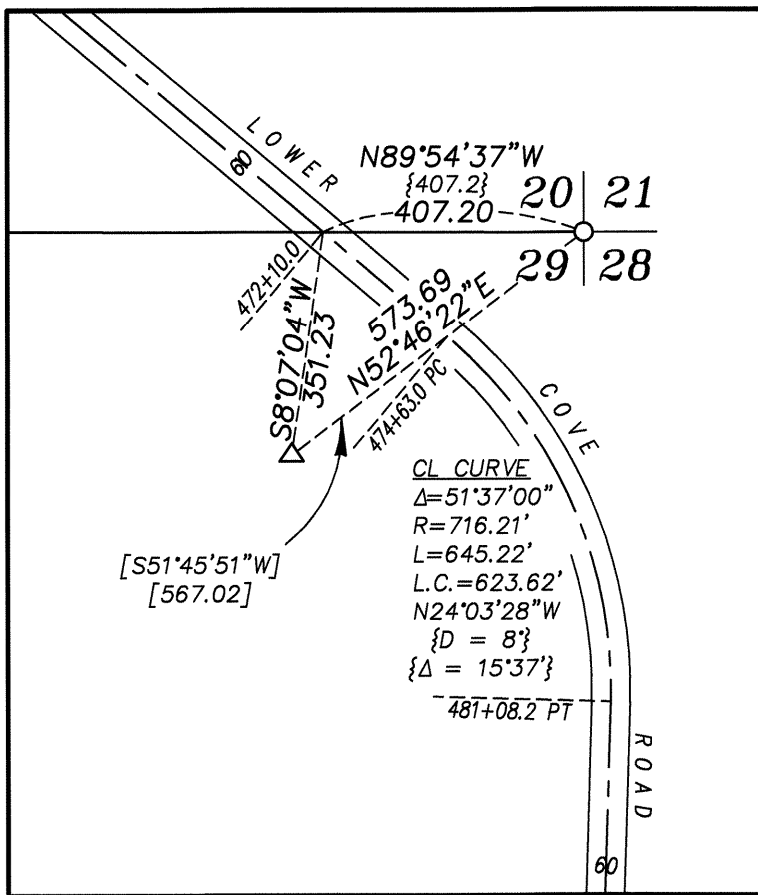
NOTE
For monumentation information, see monumentation record, filed separately

REFERENCE MATERIAL

- Old Book Survey Page 144
- Old Book Survey Page 181
- Old Book Survey Page 255
- Survey Number 114-73
- Survey Number 13-86
- Survey for Union County Highway Department by Roscoe Neal, dated 12-7-28 of Alicel-Lower Cove Road
- Union County Road Petition #395
- Union County Road Petition #405
- Union County Road Petition #406
- GLO Field Notes of contract number 103, dated September 3, 1863, executed by David Thompson



DETAIL SCALE: 1" = 300'



TOWNSHIP 2 SOUTH 32 33
TOWNSHIP 3 SOUTH 5 4

NARRATIVE

This survey was done at the request the Union County Surveyor to study and monument selected corners in Township 2 South, Range 40 East.

This portion of the township was originally surveyed by David P. Thompson under GLO Contract No. 103. Most of the monuments set by Mr. Thompson were posts and retracement by County surveyor J.W. Kimbrell in the late 1880's revealed that many of these original corners were lost. He replaced them in the course of Surveys in Old Book Page 144 and 181. Road surveys 405 and 406, completed in the early 1890's further utilize these monuments.

Many of the corners in this area were placed by a study completed by a previous deputy county surveyor Gary Langlitz and filed in Survey Number 13-86. However, many of these corners were positioned but not monumented. To place the corner of Section 28, 29, 32 and 33, I find the work done by Langlitz to be diligent and find no reason to dispute the position as per his survey. I place the corner by computing the record bearing between the corner common to Sections 4, 5, 32 and 33 and the Benchmark R-12, and rotating/scaling to my basis of bearing. At the Southwest corner of Section 20, I find a buried stone, most likely set by Old Book Survey Page 144. Though the size differs slightly and no marks could be found, I find its harmony with existing lines of possession, as well as with record measurements to adjacent corner to be strong evidence, as well as the stone's prominence in an area devoid of stone. I monument this corner at the stone position.

At the quarter corner position between Sections 19 and 20, I find the pipe found by James Voelz in Survey Number 114-73. Excavation around the pipe revealed a stone fragment marked '1/4'. I therefore accept the pipe position as a perpetuation of the Kimbrell corner monument and bring this corner to county standard. At the quarter corner between Section 20 and 21, I find the stone set by Kimbrell in Old Book Survey Page 144 in an existing fence corner. I replace the stone with an aluminum pipe monument.

For the corner common to Sections 20, 21, 28 and 29, I find a road survey for the Union County Highway Department of Lower Cove Road, done by Roscoe Neal in 1928, where he recovers a stone 12"x12"x24" marked "X" at the corner and shows its relationship to the constructed alignment of Lower Cove Road. This original GLO monument was a post, set by David Thompson in 1863 and was not found by J. W. Kimbrell in Old Book Survey 144 (dated March 20, 1889). It was replaced as a part of that survey with a stone 9x10x24. The Road survey for petition #406 done by Kimbrell (dated April 21 1892) calls for the stone to be 20"x10"x6", marked RT. I believe that the stone found in the Neal survey to be the best available perpetuation of the original location of the corner. I tie the centerline of the constructed road and find that it is harmonious with the record measurements of the Neal survey in this area. I drive a line from the Southwest corner of Section 20 through station 472+10.0 and extend it 407.2 feet (record distance as per Neal survey) to establish the position of the corner common to Sections 20, 21, 28 and 29. I find this to be harmonious with centerline and fenceline positions. I find no other unusual conditions with this survey.

UNION COUNTY SURVEYOR	
Date Received	3/14/14
Date Filed	3/14/14
By	<i>Jeffrey S. Hsu</i>
File No.	008-2014

REGISTERED PROFESSIONAL LAND SURVEYOR
<i>Jeffrey S. Hsu</i>
OREGON JUNE 2, 2010
JEFFREY S. HSU 83571
Renewal Date: June 30, 2015

BAGETT, GRIFFITH & BLACKMAN 2006 Adams Avenue, LaGrande, Oregon	
Map of Survey Monumentation of selected corners in Sections 19, 20, 21, 28 and 29 Township 2 South, Range 40 East of the Willamette Meridian UNION COUNTY, OREGON	
SURVEYED FOR	Union County Surveyor
SURVEYED BY	J. S. H.
Scale: 1" = 1000'	Drawn by: J. S. H. March 2014