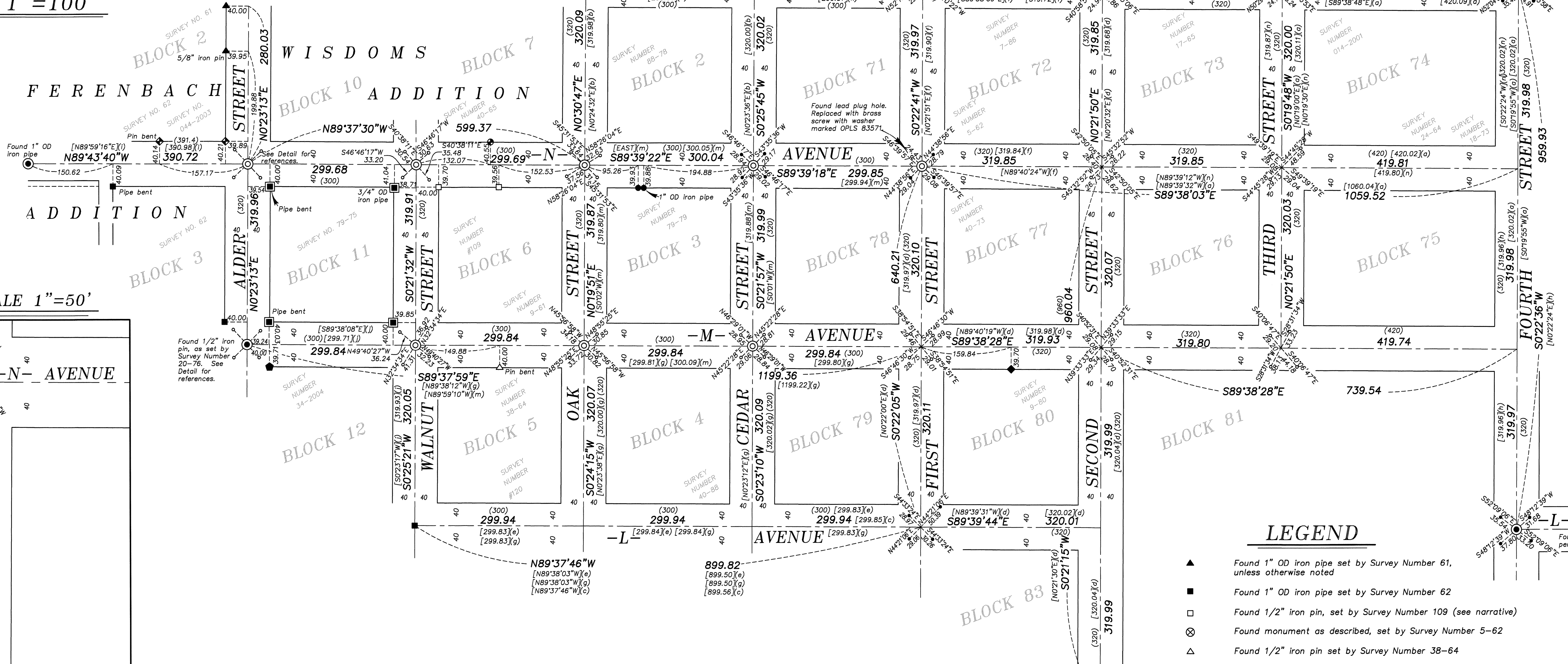
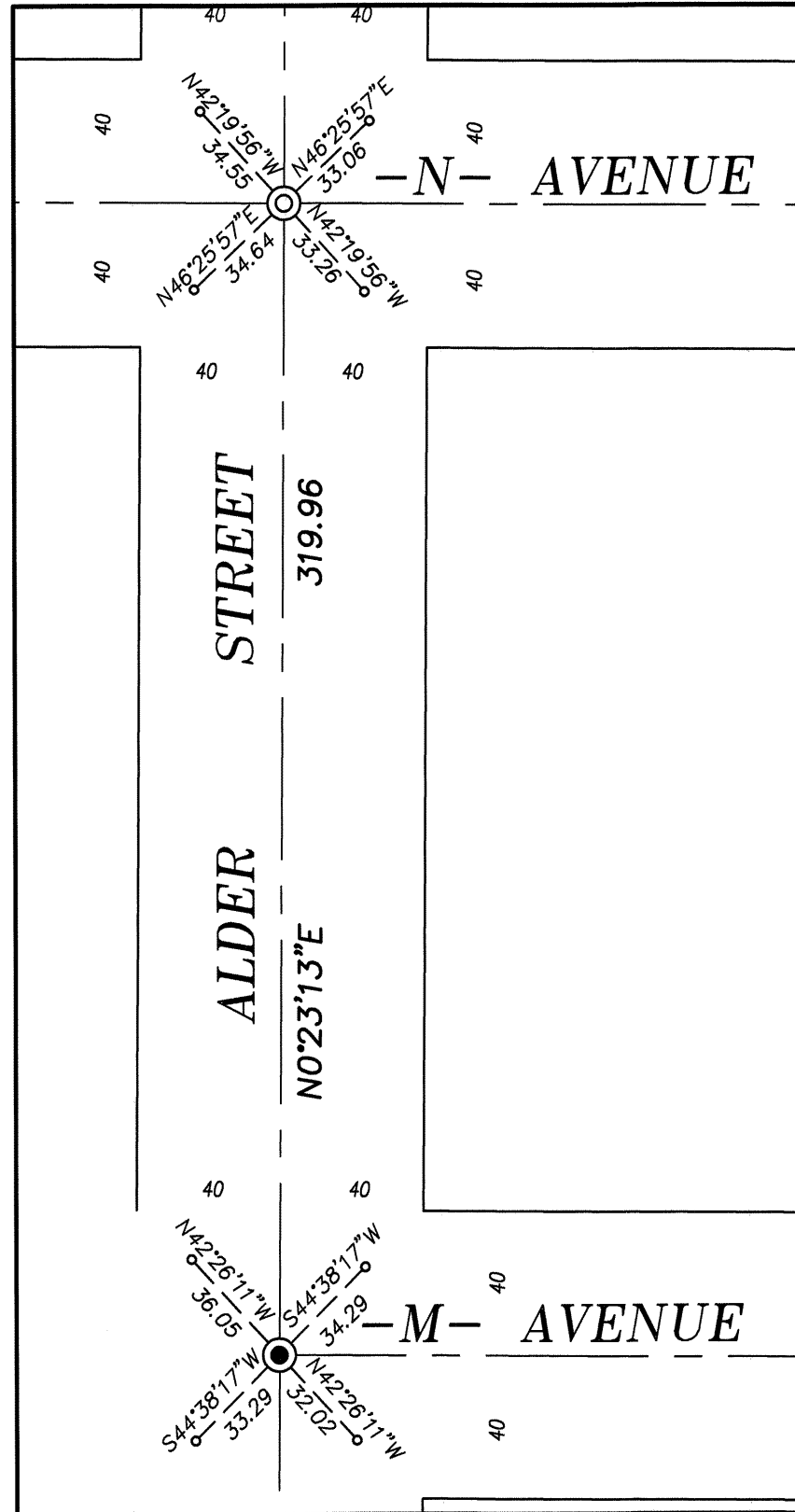


# BASIS OF BEARING

Forward bearing as published by the U.S.C. and G.S. from  $\Delta$  COLLEGE to  $\Delta$  VALLEY Dated 1946.

SCALE: 1"=100'

DETAIL SCALE 1"=50'



NOTE: All ties to monuments along right of way lines are perpendicular to centerline.

## NARRATIVE

This survey was done at the request of Norm Paullus, Public Works Director for the City of La Grande. Mr. Paullus wanted the centerline intersection monuments along M Avenue and N Avenue monumented following a paving project. To place these intersection monuments, I have retraced the physical monumentation set by the surveys shown in the reference materials as well as reviewed the methodology used in said surveys and tried to resolve these as best as possible. I recover the monuments as shown hereon. The intersection of N Avenue and Oak Street was monumented with a concrete nail, which I recovered and tied previous to paving. I replace this monument at the tied position of the found nail. The intersections along O Avenue from Oak Street to Fourth Street I place by lead plug reference monuments where they exist as per Surveys 022-2010 and 014-2013. The intersections along Fourth Street were placed by single proportion between the intersections of O Avenue and L Avenue, both placed from lead plug reference monuments. Along N Avenue, I use the lead plug references to place the intersections of Cedar Street and First Street. I place the intersections of N Avenue and 2nd Street, and N Avenue and Third Street by single proportion between the positions on First and Fourth Streets. This is the same methodology used in Surveys 18-73 and 014-2001. The intersection of M Avenue and First Street was placed by single proportion between the intersection positions of L Avenue and First Street and N Avenue and First Street. This is the same method used in Surveys 9-80 and the position utilized in Survey Number 40-88. The intersection of M Avenue and 2nd Street was placed by line/line intersection using the positions of 2nd St./K Avenue and 2nd Street/N Ave. and the positions of 1st Street/M Ave. and 4th St./M Ave. Along M Avenue, the intersection of 3rd Street was placed by single proportion between the intersections of 2nd Street and M Ave. and 4th Street and M Ave. Along M Avenue, between Alder Street and First Street, I place all the intermediate intersection monuments by single proportion as per Surveys 79-79 and 40-88. I find extreme harmony with the distances shown in the 1922 McInain monumentation of La Grande by placing these intersections in this method. The harmony with the 1922 monumentation survey diminishes along N Avenue West of Oak Street, where there is approximately one foot of deficiency between the position of N Avenue and Oak Street and the McInain pipe at the West end of N Avenue. There are numerous surveys in this area, some quite old, and with monumentation which may or may not be original. Along the West side of Alder Street, I recover the McInain pipes set by Surveys 61 and 62 as well as those set by Pete Elder in Survey 044-2003. I find that driving a line from the 1/2" pin at the intersection of M Ave. and Alder Street to a point 40 feet East of the 1" pipe set by Survey Number 61 at the Northeast corner of Block 2, Ferenbach Addition, it maintains relative harmony with the monuments found along Alder Street. To establish the N Street centerline between Oak Street and Alder, I drive a line from the intersection position at N Ave. and Oak Street to a point 40 feet North of the 1" iron pipe set by Survey Number 79-75 at the Northwest corner of Block 11 of Wisdom's Addition to intersect the centerline of Alder Street to establish the intersection of N Ave. and Alder Street. I find this to be a relatively harmonious fit with the existing monumentation in this area. I find no other unusual conditions with this survey.

## REFERENCE MATERIAL

- (a) Survey Number 18-73
- (b) Survey Number 88-78
- (c) Survey Number 42-79
- (d) Survey Number 9-80
- (e) Survey Number 16-85
- (f) Survey Number 7-86
- (g) Survey Number 40-88
- (h) Survey Number 011-1991
- (i) Survey Number 044-2003
- (j) Survey Number 034-2004
- (k) Survey Number 022-2010
- (l) Survey Number 79-79
- (m) Survey Number 014-2001
- (n) Survey Number 014-2001
- Survey Number 61
- Survey Number 62
- Survey Number 109
- Survey Number 120
- Survey Number 9-81
- Survey Number 5-62
- Survey Number 24-64
- Survey Number 38-64
- Survey Number 17-65
- Survey Number 40-65
- Survey Number 5-66
- Survey Number 40-73
- Survey Number 79-75
- Survey Number 20-76
- Survey Number 18-89
- (1922 monumentation)
- Survey Number 028-2005
- Survey Number 022-2010
- Survey Number 008-2012
- Survey Number 014-2013

## LEGEND

- ▲ Found 1" OD iron pipe set by Survey Number 61, unless otherwise noted
- Found 1" OD iron pipe set by Survey Number 62
- Found 2" iron pin, set by Survey Number 109 (see narrative)
- ⊗ Found monument as described, set by Survey Number 5-62
- △ Found 1/2" iron pin set by Survey Number 38-64
- Found 3/4" iron pipe set by Survey Number 40-65
- ◆ Found 5/8" iron pin set by Survey Number 40-73
- Found 1" OD iron pipe, unless otherwise noted, set by Survey Number 79-75
- Found 5/8" iron pin, unless otherwise notes, set by Survey Number 79-79
- ◆ Found 5/8" iron pin set by Survey Number 9-80
- ◆ Found 5/8" iron pin with plastic cap marked ELDER LSS1277, set by Survey Number 044-2003
- Found 5/8" iron pin with plastic cap marked BGB SURVEY MARKER, set by Survey Number 034-2004
- ⊙ Found monument as described as perpetuation of monument set by Survey Number 18-89 (1922 monumentation of La Grande)
- ⊗ Position determined by found lead plug reference monuments
- ⊙ Set 2" brass cap in concrete marked BAGETT, GRIFFITH AND BLACKMAN
- Set brass screw in lead plug reference monument with washer marked OPLS 83571
- ( ) Record measurement as per Survey Number 18-89 (1922 monumentation of La Grande)
- [ (x) ] Record measurement as per survey as noted in reference materials

UNION COUNTY SURVEYOR  
 Date Received: 2/28/14  
 Date Filed: 2/28/14  
 By: [Signature]  
 File No.: 006-2014

REGISTERED PROFESSIONAL LAND SURVEYOR  
 [Signature]  
 JEFFREY S. HSU  
 83571  
 Renewal Date: June 30, 2015

BAGETT, GRIFFITH & BLACKMAN  
 2006 Adams Avenue, LaGrande, Oregon  
 Map of Survey  
 Monumentation of centerline intersections along M Avenue and N Avenue, City of La Grande  
 UNION COUNTY, OREGON  
 SURVEYED FOR: City of La Grande  
 SURVEYED BY: J. S. H.  
 Scale: 1" = 100' Drawn by: J. S. H. Feb. 2014