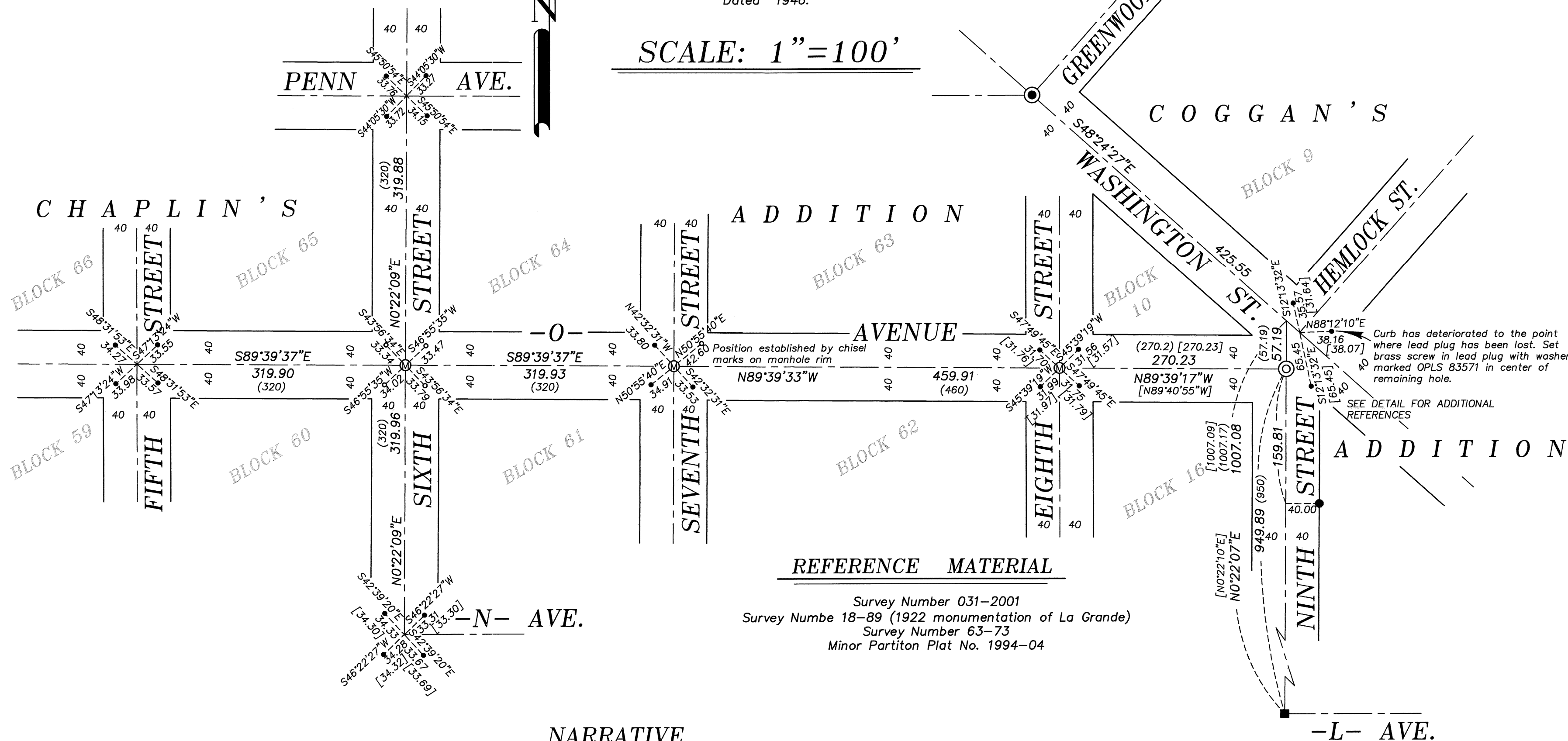


BASIS OF BEARING

Forward bearing as published by the U.S.C. and G.S. from Δ COLLEGE to Δ VALLEY Dated 1946.

SCALE: 1"=100'



REFERENCE MATERIAL

Survey Number 031-2001
 Survey Number 18-89 (1922 monumentation of La Grande)
 Survey Number 63-73
 Minor Partion Plat No. 1994-04

NARRATIVE

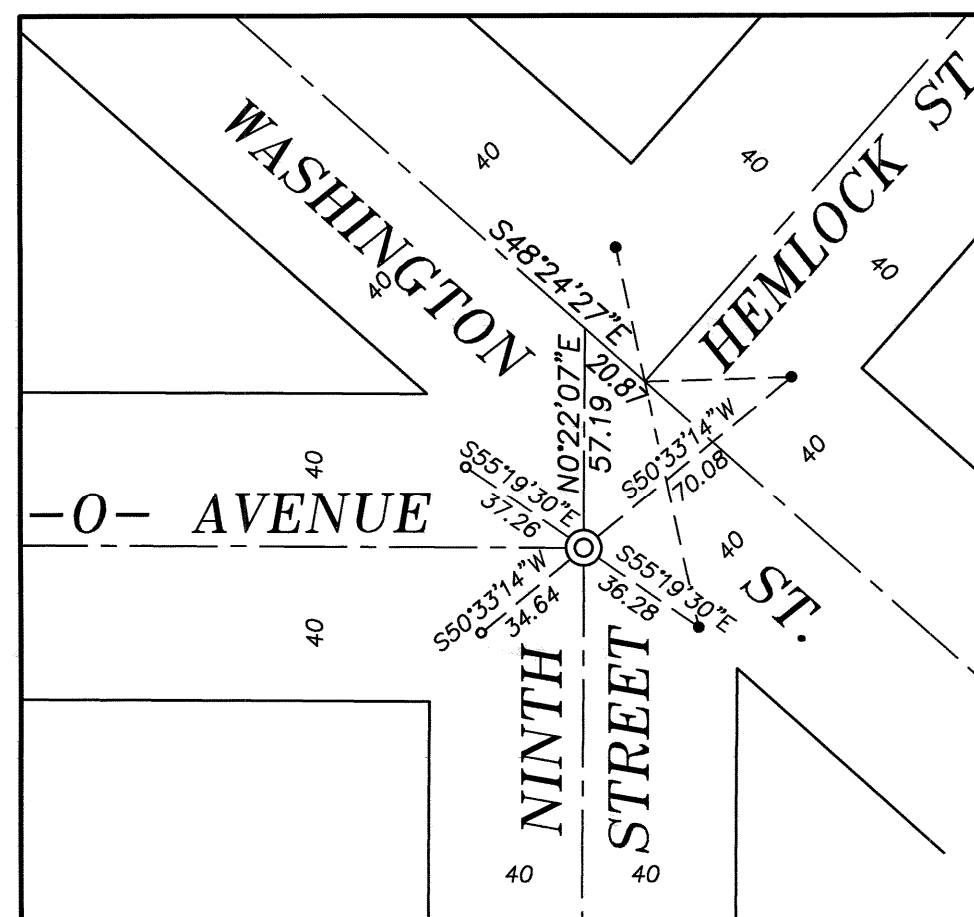
This survey was done at the request of Norm Paullus, on behalf of the City of La Grande. Mr. Paullus wanted the monuments, set by the 1922 monumentation of La Grande (Survey 18-89) replaced following an asphalt overlay project. The intersections of O Ave/Sixth St., N Ave/Sixth Street and Penn Ave/Sixth Street were established from the found lead plug references. Only three references could be found on Seventh Street and O Avenue, but the centerline intersection could be established by cross marks chiseled into the manhole rim (prior to overlay). Placing the intersection of Sixth Street and O Avenue by intersection of the aforementioned monuments is extremely harmonious with the 1922 McIn monumentation.

I hold the brass cap monument at the intersection of Greenwood and Washington. Since I only recover three reference monuments at the intersection of Hemlock and Washington, I drive a line at record bearing from the intersection of Greenwood and Washington as per Survey Number 31-2001 to intersect the line between the North and South reference plugs. This is a harmonious fit between the record distances to the references. I establish the Ninth Street centerline by holding the pin set at the intersection of 9th and L Ave set by Minor Partion 1994-04 and driving a line to a point 40 feet East of the monument set by Survey Number 031-2001. Placing the intersection as such is harmonious with Survey Number 031-2001.

I find no other unusual conditions with this survey.

LEGEND

- Found 2" brass cap set by Survey Number 63-73
- Found 5/8" iron pin with plastic cap marked BGB SURVEY MARKER, set by Survey Number 031-2001
- ⊗ Intersection position determined by found lead plug references
- Found 5/8" iron pin with plastic cap set by Minor Partion Plat No. 1994-04
- ⊙ Set 2" brass cap in concrete marked BAGETT GRIFFITH AND BLACKMAN
- Set brass screw in lead plug for reference, with brass washer marked OPLS 83571
- () Record information as per Survey Number 18-89 (1922 monumentation)
- [] Record information as per Survey Number 031-2001
- Ⓜ Manhole



DETAIL SCALE 1"=50'

REGISTERED
PROFESSIONAL
LAND SURVEYOR

OREGON
JUNE 2, 2010
JEFFREY S. HSU
83571

Renewal Date: June 30, 2015

UNION COUNTY
SURVEYOR

Date Received 2/28/14

Date Filed 2/28/14

By J.S.H.

File No. 005-2014

BAGETT, GRIFFITH & BLACKMAN
 2006 Adams Avenue, LaGrande, Oregon
 Map of Survey

Monumentation of centerline intersections
 along O Avenue, City of La Grande

UNION COUNTY, OREGON

SURVEYED FOR	City of La Grande
SURVEYED BY	J. S. H.
Scale: 1" = 100'	Drawn by: J. S. H. Feb. 2014

SURVEY NUMBER 005-2014