

REFERENCE MATERIAL

Union County Monumentation Records
 Plat of Union Orchard Tracts
 Survey Number 91-72
 Survey Number 23-89
 Survey Number 046-1994
 Survey Number 004-1997
 Survey Number 005-1997
 Survey Number 032-1999
 Minor Partition Plat Number 1991-12
 Minor Partition Plat Number 1992-22
 Minor Partition Plat Number 1994-02
 Minor Partition Plat Number 1995-12
 Minor Partition Plat Number 1996-06
 Minor Partition Plat Number 1996-22
 Minor Partition Plat Number 1997-02
 Minor Partition Plat Number 20050001T
 Minor Partition Plat Number 20060015T

DEED REFERENCES
 Volume F Page 129
 Volume 30 Page 333
 Volume 32 Page 167
 Volume 36 Page 397
 Volume 39 Page 249
 Volume 40 Page 2
 Microfilm Number 32317
 Microfilm Number 48474
 Microfilm Number 20027347
 Microfilm Number 20112329
 Microfilm Number 20112563

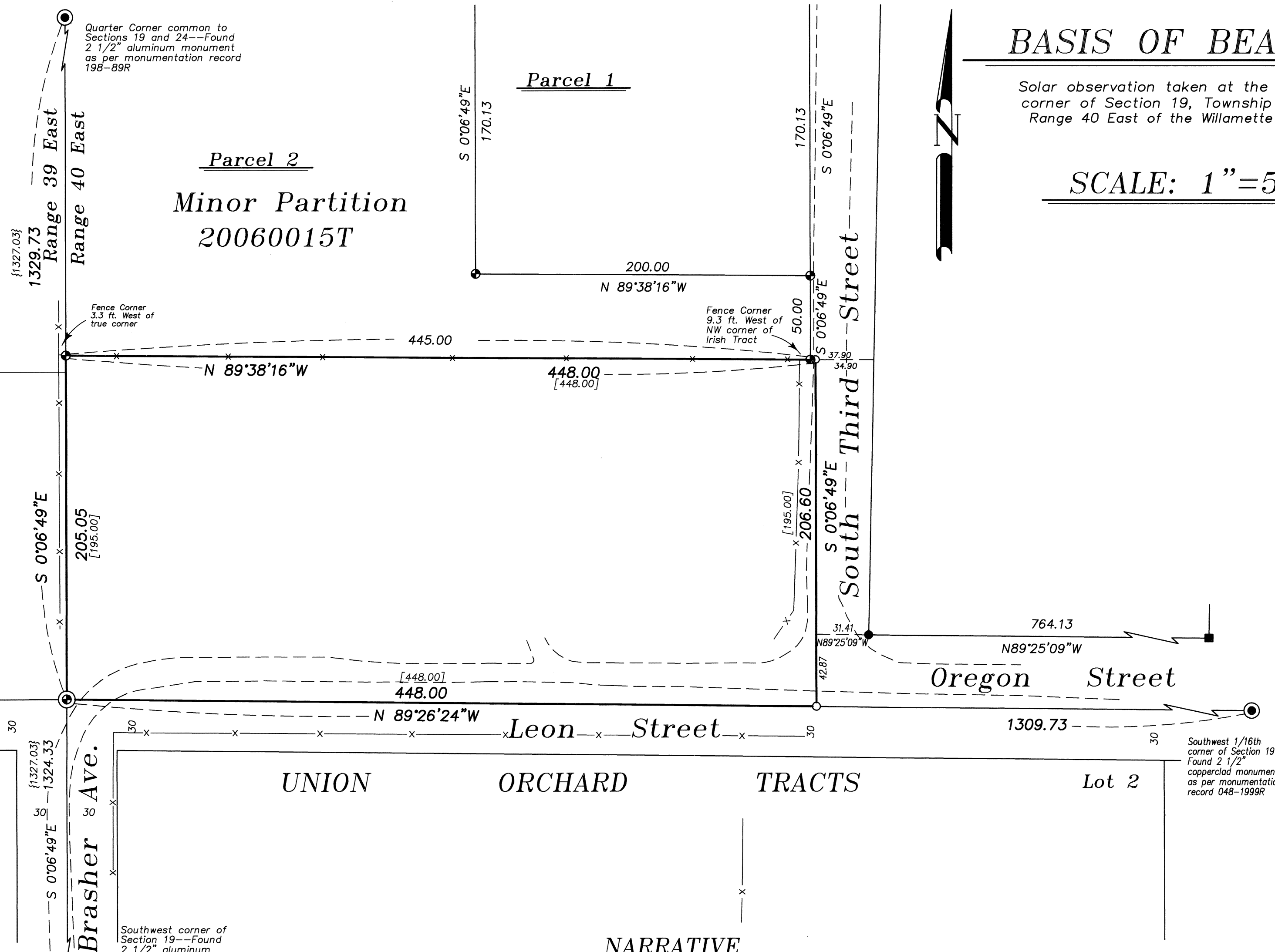
LEGEND

- Found monument as described as per Union County monumentation records
- Found 5/8" iron pin with plastic cap marked "APA" set by survey number 046-1994
- Found 5/8" iron pin with plastic cap marked "BGB SURVEY MARKER" set by Minor Partition Plat Number 1996-22
- Found 5/8" iron pin with plastic cap marked "BGB SURVEY MARKER" set by Minor Partition Plat Number 20060015T
- ⊙ Reset 2 1/2" aluminum pipe set by survey number 032-1999 with a 2 1/2" aluminum cap set on a 5/8"x30" iron pin (See Narrative)
- Set 5/8"x30" iron pin with plastic cap marked "BGB SURVEY MARKER"
- x — Existing fence line
- - - - - Edge of Gravel Roadway
- [] Record distance of deed microfilm number 20112563
- { } Record distance of Survey Number 032-1999

BASIS OF BEARING

Solar observation taken at the Northwest corner of Section 19, Township 4 South, Range 40 East of the Willamette Meridian.

SCALE: 1"=50'



NARRATIVE

This survey was done at the request of Mike Irish, owner of the above surveyed tract. The purpose of this survey is to monument his ownership. As discussed in Partition Plat 20060015T, the properties within the Northwest quarter of the Southwest quarter of Section 19 are all described by metes and bounds, with Third Street being a remnant. I place the North line of this tract at the South line of the partition plat. I place the East line of the tract at record distance (448 ft.) from the West line of Section 19 as per deed. This tract is 3 feet wider than the tract partitioned to the North. This places the line in conflict with the surface of Third Street as shown. In reviewing the monumentation and survey records, I find that the Southwest corner of this tract is the South 1/16th corner between Sections 19 and 24. This was originally placed by survey number 25-89, with that position being used and documented on survey number 046-1994, and partition plat numbers 1994-02, 1996-06 and 1996-22. Survey Number 032-1999 then monumented the corner, first at the position previously determined, then the monument was reset at proportionate position. I believe the correct position is that used by the previous surveys and partitions and replace the monument at that position (2.70 feet South of the existing monument). I find no other recorded surveys have used the proportionate position. I then place the South line of the tract along the South line of the Northwest quarter of the Southwest quarter of Section 19 determined by driving a line between the two monuments at the Southeast and Southwest corners of the quarter section. This places the excess portion of the 1/4 section in the Irish tract. This was the method outlined by partition plat number 20060015T, treating the Irish tract as a remnant. The existing roadway along the South encroaches as shown. The only dedicated area for a roadway came from the plat of Union Orchard Tracts, which falls South of the existing roadway. The roadway has been in place for many years and has accrued some prescriptive rights. I discussed this with Mr. Irish. The existing fence along the North has been moved from the position at the time of the partition which was North of the South line of the partition. It has now been placed on the surveyed line. The fence along the West side of the tract is away from the true property line as shown. I find no other unusual conditions on this survey.

REGISTERED
 PROFESSIONAL
 LAND SURVEYOR

OREGON
 JULY 17, 1986
 RICK G. ROBINSON
 2219
 Renewal Date: Dec. 31, 2014

UNION COUNTY
 SURVEYOR
 Date Received 12/11/13
 Date Filed 12/11/13
 By R.G.R.
 File No. 055-2013

BAGETT, GRIFFITH & BLACKMAN
 2006 Adams Avenue, LaGrande, Oregon
 Map of Survey
 A tract of land situated in the Northwest quarter of the Southwest quarter of Section 19, Township 4 South, Range 40 East of the Willamette Meridian
 UNION COUNTY, OREGON
 SURVEYED FOR Mike Irish
 SURVEYED BY R.G.R. 12/13
 Scale: 1" = 50' Drawn by: R.G.R. 12/13

SURVEY NUMBER 055-2013