

BASIS OF BEARING

The North line of the Northwest quarter of Section 5, Township 2 South, Range 40 East of the Willamette Meridian being South 89°53'05" West, as per Survey Number 031-1999

SCALE: 1" = 1000'

LEGEND

- Found monument as noted, marked as per Union County Monumentation Records
- Found 2" iron pipe, set by Survey Number 112 or 113
- Found 2" iron pipe with brass cap, set by Survey Number 37-86
- ⊙ Found 2 1/2" aluminum pipe with 2 1/2" aluminum cap marked as per Union County Monumentation records, set by Survey Number 031-1999
- ⊙ Set 2 1/2" x 30" aluminum pipe with 2 1/2" aluminum cap marked as per Union County monumentation records
- Set 5/8" x 30" iron pin, with 2 1/2" aluminum cap marked as per Union County monumentation records
- [[]] Record measurement as per Survey Number 113
- (()) Record measurement as per Old Book Survey Number 254
- { } Record measurement as per Survey Number 031-1999
- () Record measurement from Field Notes of GLO Contract No. 450, executed by Henry Meldrum, dated June 11, 1882
- { } Record measurement from Field Notes of GLO Contract No. 102, executed by Timothy W. Davenport, dated July 20, 1863
- [] Record measurement from Field Notes of GLO Special Instructions dated June 16, 1888, executed by John W. Kimbrell

REFERENCE MATERIAL

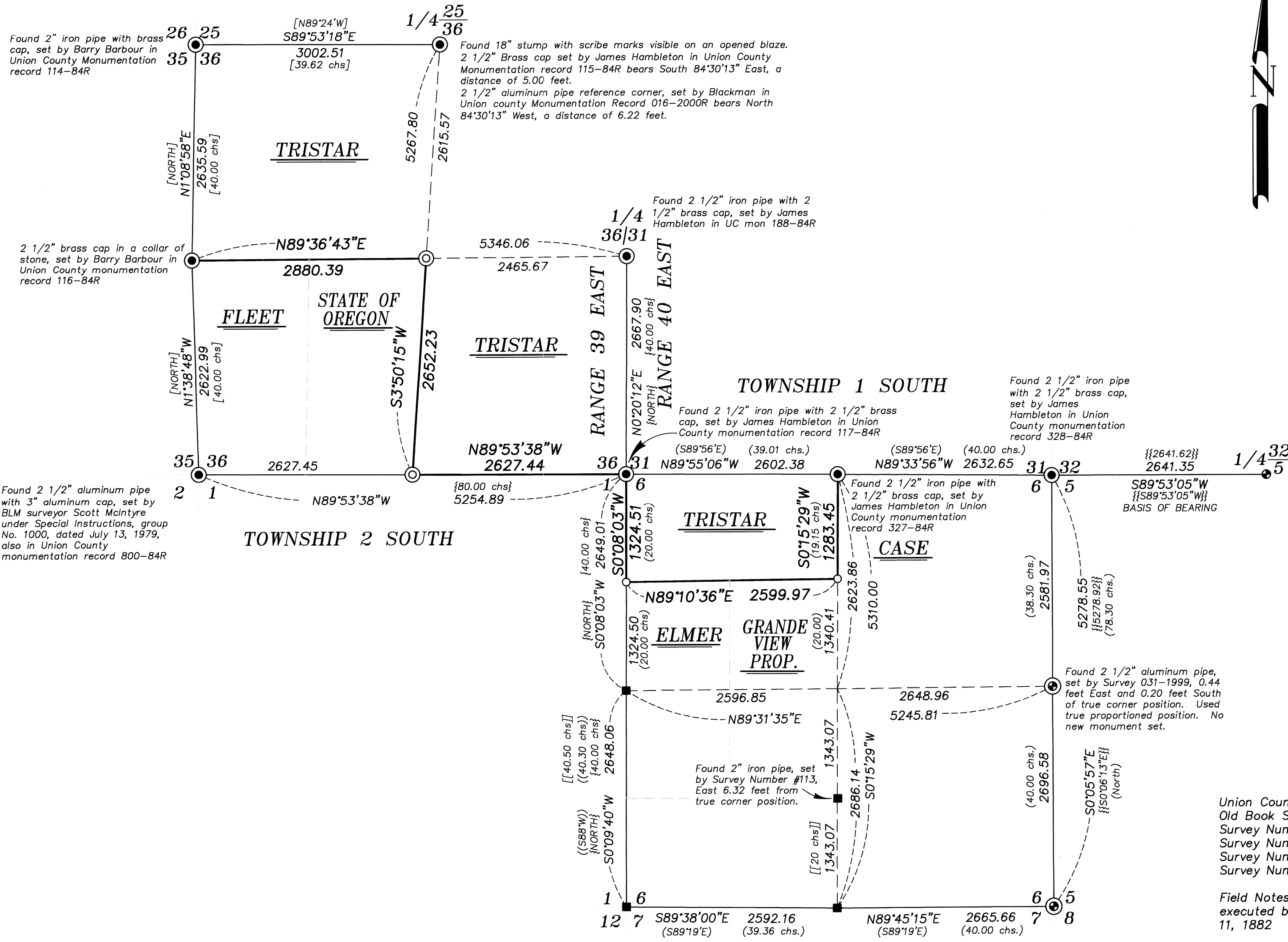
Union County Monumentation Records
Old Book Survey Page 254
Survey Number 112
Survey Number 113
Survey Number 37-86
Survey Number 031-1999

Field Notes of GLO Special Instructions dated June 16, 1888, executed by John W. Kimbrell

Field Notes of GLO Contract No. 450, executed by Henry Meldrum, dated June 11, 1882

DEED REFERENCES
Book 49, Page 198
Microfilm Document Number 139703
Microfilm Document Number 20076940
Microfilm Document Number 20101543

Field Notes of GLO Contract No. 102, executed by Timothy W. Davenport, dated July 20, 1863



NARRATIVE

This survey was done at the request of Steve McClelland, on behalf of Hancock Forest Management, land manager for Tristar NE Oregon Timberlands, owner of the land within. Mr. McClelland wanted the exteriors of the property as shown hereon monumented in preparation for a timber sale. I recover the monuments as shown hereon. The found pipes set by Survey Number 113 were verified with original GLO evidence. At the Southwest corner of Section 6, the only remaining evidence was an uprooted tree with scribe marks visible on an opened blaze, the original position of which could not be ascertained. I accept the iron pipe monument position as I believe it was placed by Voelz from original evidence. The North quarter corner of Section 36 was originally a tree. It was referenced by Hambleton a distance of 5.00 feet East and by Blackman at a distance of 6.22 to the West. The tree is now a stump with the scribes still visible, and I find that driving a line between the two monuments is relatively harmonious with the center of the stump at the root crown. I therefore place the true position at record distance on line between the two reference corners. The Northwest corner of Section 36 was placed by Barry Barbour by original bearing trees, two of which are still alive and vigorous. There seems to be a gross excess on the North line of Section 36, however, the evidence indicates that these corners are placed at original GLO position. At the South quarter corner of Section 36, I make a diligent search for the original corner, but could find no remaining evidence. I place this corner at proportionate position. I subdivide the sections as per BLM Manual of Instruction 2009. I find no other unusual conditions with this survey.

REGISTERED
PROFESSIONAL
LAND SURVEYOR

OREGON
JUNE 2, 2010
JEFFREY S. HSU
83571

Renewal Date: June 30, 2015

UNION COUNTY
SURVEYOR
Date Received 10/10/13
Date Filed 10/10/13
By [Signature]
File No. 050-2013

BAGETT, GRIFFITH & BLACKMAN
2006 Adams Avenue, LaGrande, Oregon
Map of Survey
Situate in Section 6, Township 2 South, Range 40 East and Section 36, Township 1 South, Range 39 East of the Willamette Meridian
UNION COUNTY, OREGON
SURVEYED FOR Hancock Forest Management
SURVEYED BY J. S. H.
Scale: 1" = 1000' Drawn by: J. S. H. Sept./Oct. 2013

SURVEY NUMBER 050-2013