

# BOUNDARY LINE ADJUSTMENT

## BASIS OF BEARING

Forward bearing as published by the U.S.C. and G.S. from  $\Delta$  COLLEGE to  $\Delta$  VALLEY Dated 1946.

SCALE: 1" = 100'

## LEGEND

- ◆ Found 5/8" Iron Pin set by Survey Number 1-90
- Found 5/8" Iron Pin with yellow plastic cap marked BGB SURVEY MARKER, set by Survey Number 004-2007
- ⊙ Found 2 1/2" aluminum cap on 5/8" iron pin, set by Survey Number 004-2007
- Found 5/8" iron pin with plastic cap marked BGB SURVEY MARKER, set by Survey Number 034-2013
- Set 5/8" x 30" Iron Pin with yellow plastic cap marked BGB SURVEY MARKER
- ( ) Record measurement as per Survey 1-90
- [ ] Record measurement as per Survey 004-2007
- { } Record measurement as per Survey Number 034-2013

## REFERENCE MATERIAL

Survey Number 73-78 DEED REFERENCES  
 Survey Number 1-90 Microfilm Document Number 45054  
 Survey Number 004-2007 Microfilm Document Number 79478  
 Survey Number 034-2013 Microfilm Document Number 80416  
 Minor Partition Number 20130003T Microfilm Document Number 20084457

## NARRATIVE

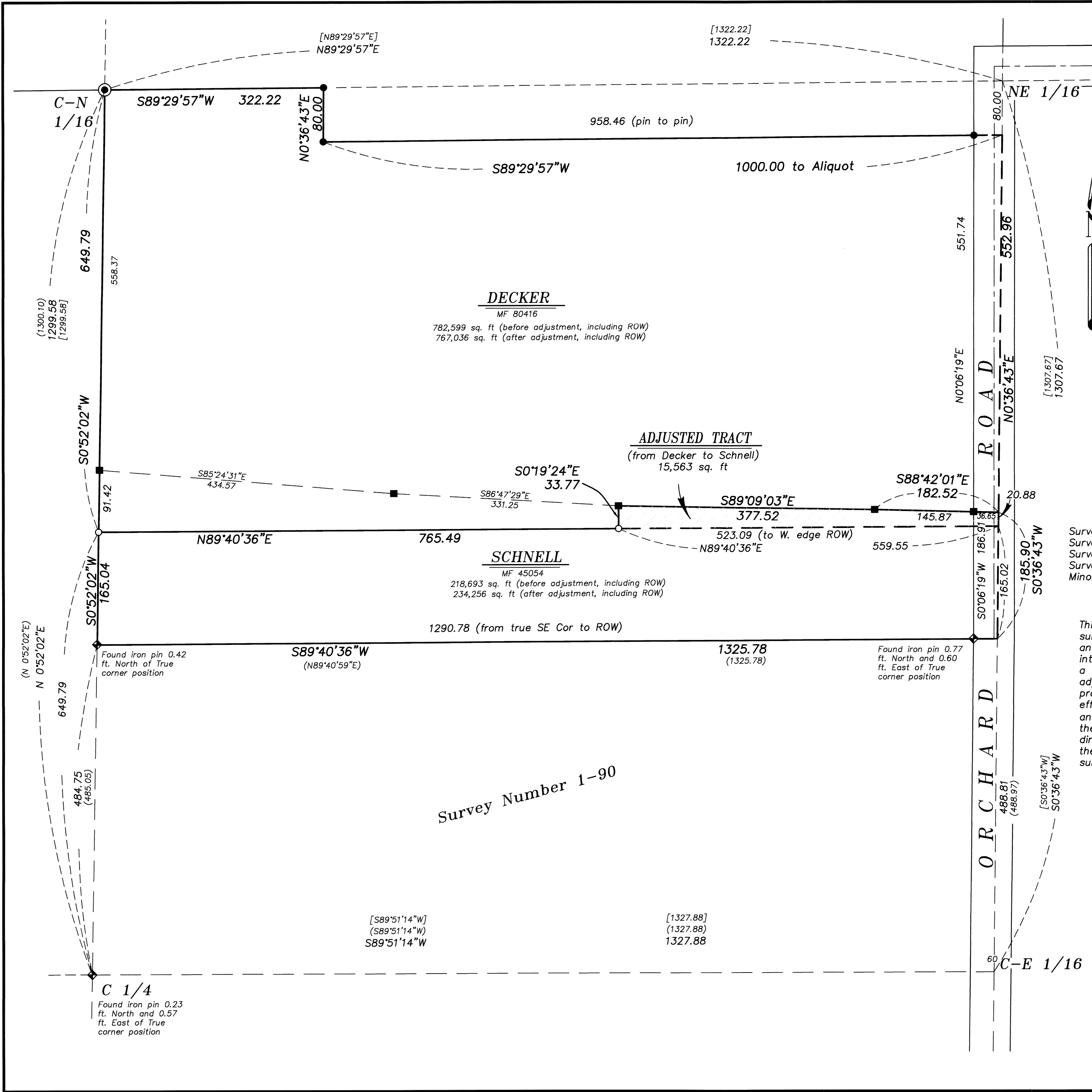
This survey was done at the request of Bob Schnell. The purpose of this survey is to monument a boundary line adjustment between the Schnell and Decker parties. Survey 034-2013 documented what was originally intended to be a boundary by agreement. The parties involved settled on a different configuration than the one laid out in said survey. Since this adjustment adjoins a placeable surveyed title line, it was decided to process this through the boundary line adjustment process. Deeds to effectuate this boundary line adjustment are to be filed separately. I find an error in the course from the C 1/4 of Section 4 to the SW corner of the Schnell tract as shown on Survey Number 034-2013. It is dimensioned to the monument and not the true corner position. I correct the dimension on this survey. I find no other unusual conditions with this survey.

UNION COUNTY SURVEYOR  
 Date Received 11/19/13  
 Date Filed 11/19/13  
 By *Jeffrey S. Hsu*  
 File No. 048-2013

REGISTERED PROFESSIONAL LAND SURVEYOR  
*Jeffrey S. Hsu*  
 OREGON JUNE 2, 2010  
 JEFFREY S. HSU 83571  
 Renewal Date: June 30, 2015

**BAGETT, GRIFFITH & BLACKMAN**  
 2006 Adams Avenue, LaGrande, Oregon  
 Map of Survey  
**BOUNDARY LINE ADJUSTMENT**  
 Situate in the Southwest quarter of the Northeast quarter of Section 4, Township 2 South, Range 38 East of the Willamette Meridian  
 UNION COUNTY, OREGON

SURVEYED FOR	Bob Schnell
SURVEYED BY	J. S. H.
Scale: 1" = 100'	Drawn by: J. S. H. Oct. 2013



Survey Number 1-90