

LEGEND

- Found brass plaque in concrete set by Survey Number 63-73
- ⊙ Found brass screw in lead plug, set in concrete, set by Survey Number 18-89 (1922 monumentation)
- Found 5/8" iron pin set by Survey Number 004-2003
- Found lead plug with brass screw and washer marked OPLS 83571 set by survey number 018-2012
- ▲ Found 5/8" iron pin with plastic cap marked "BGB SURVEY MARKER" set by survey number 018-2012
- Set 1 1/2" brass plaque epoxied into concrete apron at surface level marked with a cross and punch mark
- () Record measurement as per Supplemental Plat of Chaplin's Addition
- [] Record measurement as per Survey Number 18-89 (1922 monumentation of La Grande)
- { } Record measurement as per Survey Number 63-73
- (()) Record measurement as per Survey Number 037-2002
- \ \ Record measurement as per Survey Number 004-2003
- [[]] Record measurement as per Survey Number 026-2007
- { } Record measurement as per Survey Number 13-88
- - - Centerline

BASIS OF BEARING

Forward bearing as published by the U.S.C. and G.S. from Δ COLLEGE to Δ VALLEY
Dated 1946.

SCALE: 1" = 60'

REFERENCE MATERIAL

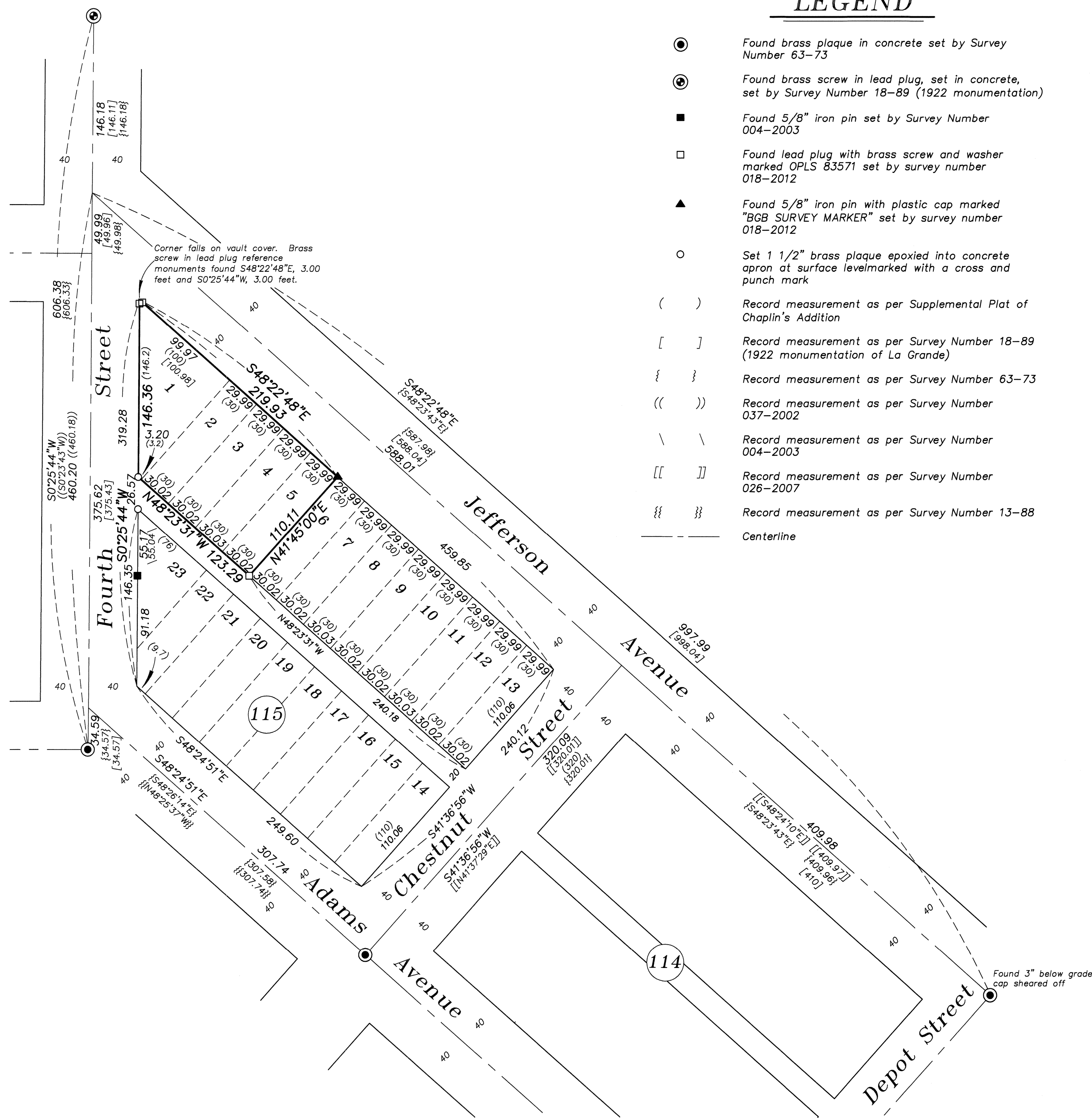
- Survey Number 63-73
- Survey Number 13-88
- Survey Number 18-89
- Survey Number 012-1996
- Survey Number 037-2002
- Survey Number 004-2003
- Survey Number 003-2005
- Survey Number 026-2007
- Survey Number 018-2012

DEED REFERENCES

- Microfilm Document Number 117589
- Microfilm Document Number 20104015

NARRATIVE

This survey was done at the request of Norm Paullus, City of La Grande Public Works Director. The purpose of this survey is to replace the two corner monuments at the West end of the alley within Block 115, destroyed by construction to improve the alley entrance. I use survey number 018-2012 as the basis of location for the block. I found the remaining monuments of survey number 018-2012 and survey number 004-2003 as shown. I reset the two monuments at the position of the block corners determined by the 2012 survey. They are now in a concrete apron, so I drilled in and set 1 1/2" brass plaque with a cross and punch mark at the corner positions. I find no other conditions with this survey.



REGISTERED
PROFESSIONAL
LAND SURVEYOR

Rick G. Robinson
OREGON
JULY 17, 1988
RICK G. ROBINSON
2219

Renewal Date: Dec. 31, 2014

UNION COUNTY
SURVEYOR

Date Received 9/30/13

Date Filed 9/30/13

By *[Signature]* DEPUTY

File No. 046-2013

BAGETT, GRIFFITH & BLACKMAN
2006 Adams Avenue, LaGrande, Oregon
Map of Survey

Lots 1, 2, 3, 4 and 5, Block 115,
Chaplin's Addition to La Grande

UNION COUNTY, OREGON

SURVEYED FOR	City of La Grande	
SURVEYED BY	R.G.R.	9/2013
Scale: 1" = 60'	Drawn by: R.G.R.	9/2013

SURVEY NUMBER 046-2013