

# Lot Line Adjustment

## BASIS OF BEARING

Solar observation taken at the North quarter corner of Section 15, Township 1 North, Range 39 East of the Willamette Meridian.

SCALE: 1" = 60'

## REFERENCE MATERIAL

Plat of Elgin Industrial Park  
Survey Number 015-2006  
Survey Number 004-2009

### DEED REFERENCES

Microfilm Number 20010035  
Microfilm Number 20013356  
Microfilm Number 20014452  
Microfilm Number 20015295  
Microfilm Number 20020947  
Microfilm Number 20062722  
Microfilm Number 20092425

## LEGEND

● Found 5/8" iron pin with plastic cap marked "BGB SURVEY MARKER" set by the plat of Elgin Industrial Park

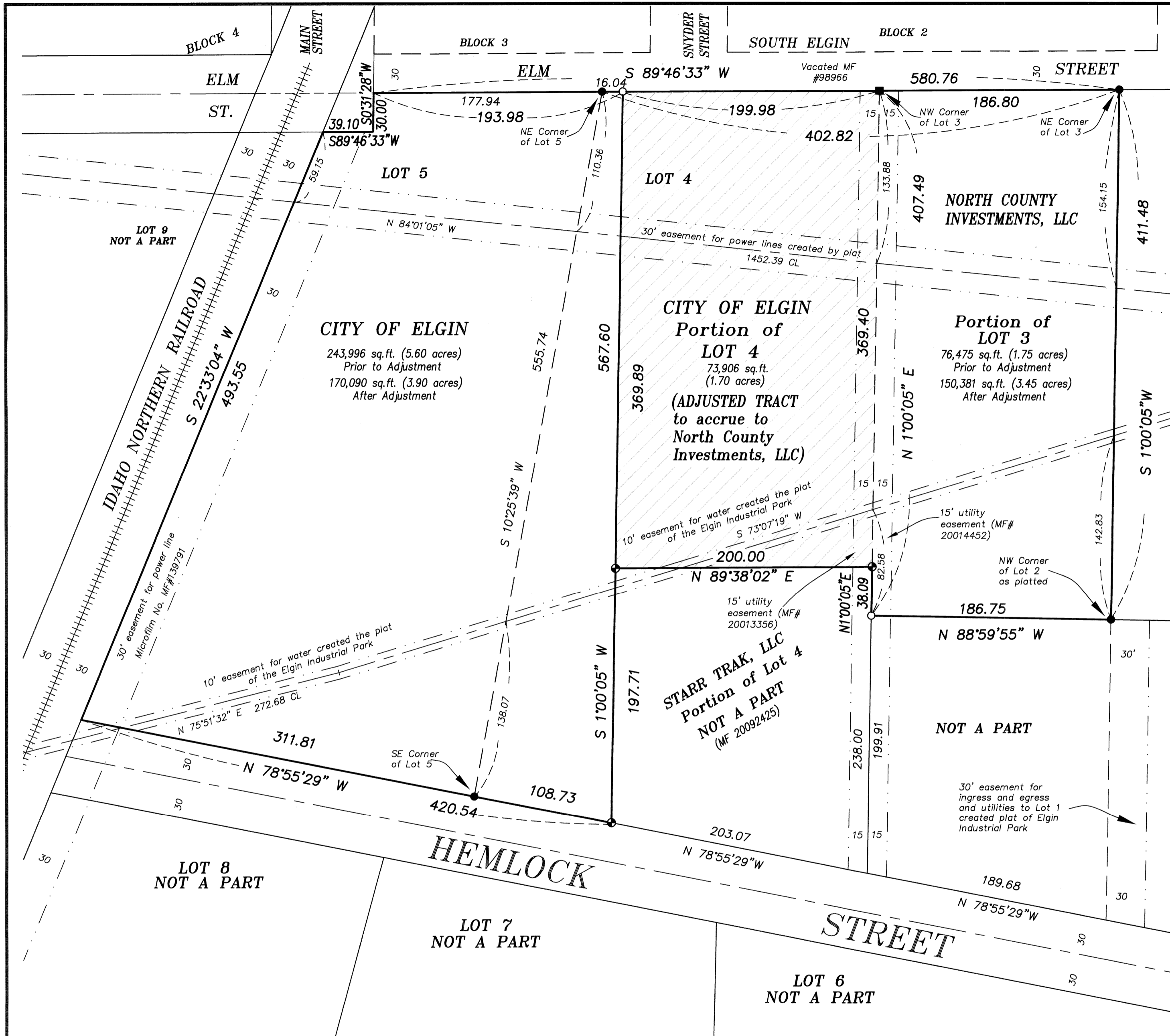
■ Found 5/8" iron pin with plastic cap marked "APA" set by survey number 015-2006

● Found 5/8" iron pin with aluminum cap marked "APA OR 2849 WA 41295" set by survey number 004-2009

○ Set 5/8" iron pin with plastic cap marked "BGB SURVEY MARKER"

Centerline

Easement Line



## NARRATIVE

This survey was done at the request of Dennis Cross of North County Investments, LLC. The purpose of this survey is to monument a lot line adjustment between said LLC and the City of Elgin. I found the controlling monuments as shown and set a new pin at the Northwest corner of the adjusted tract. I also set a pin at the Northwest corner of Lot 2, which was previously adjusted without benefit of survey. I find no unusual conditions on this survey.

## APPROVAL

Approved as a lot line adjustment this  
29 day of August, 2013.

*Terrie Richards*  
Terrie Richards  
City of Elgin  
Recorder/Administrator

UNION COUNTY SURVEYOR	
Date Received	8/29/13
Date Filed	8/29/13
By	<i>[Signature]</i>
File No.	042-2013

<b>BAGETT, GRIFFITH &amp; BLACKMAN</b> 2006 Adams Avenue, LaGrande, Oregon Map of Survey	
LOT LINE ADJUSTMENT Portions of Lots 3, 4 and 5 Elgin Industrial Park Elgin UNION COUNTY, OREGON	
SURVEYED FOR	North County Investments, LLC
SURVEYED BY	R.G.R. 8/13
Scale: 1" = 60'	Drawn by: R.G.R. 8/13

REGISTERED PROFESSIONAL LAND SURVEYOR
<i>[Signature]</i>
OREGON JULY 17, 1988 RICK G. ROBINSON 2219
Renewal Date: Dec. 31, 2014

SURVEY NUMBER 042-2013