

IMBLER - ELGIN (CLIMBING LANE) SEC. DRAWING NO. 10B-3-32 SCALE 1" = 100' SURVEILING UNION COUNTY YAWGLAW LAKE HIGHWAY

T. 1S., R. 39E., W.M.

OREGON STATE HIGHWAY DIVISION  
IMBLER - ELGIN (CLIMBING LANE) SEC.  
WALLOWA LAKE HIGHWAY  
UNION COUNTY  
Scale: 1 inch = 100 feet

BASIS OF BEARING

THE BEARING BETWEEN PINS AT STA 825+00 P.O.T. AND 828+57.97 P.S. IS N. 20° 08' 07" E. AS PER UNION COUNTY SURVEY 28-89.

LEGEND

- CALCULATED R/W POINT
- SET 3/8" IRON PIN W/ ALUMINUM CAP
- FG. MONUMENT AS NOTED - ORIGIN AS PER O.S.H.D. DRAWINGS 28-17-10 & 88-16-17
- ▲ SET BRASS CAP IN CONCRETE

NARRATIVE

THE PURPOSE OF THIS SURVEY WAS TO MONUMENT THE CENTERLINE AND R/W OF OREGON STATE HIGHWAY NO. 82 (WALLOWA LAKE HIGHWAY, IMBLER-ELGIN (CLIMBING LANE) SECTION) AS SHOWN ON O.S.H.D. DRG. NO. 98-36-6 AND 88-16-17. THE BASIS OF BEARINGS AND OREGON STATE PLANE COORDINATES ARE FROM THE SURVEY PERFORMED BY BAGETT - GRIFFITH AND ASSOCIATES DATED NOVEMBER, 1989 AND RECORDED IN UNION COUNTY NO. 28-89 AND 31-89.

EXISTING MONUMENTS WERE FOUND AND TIED AS NOTED.

NEW MONUMENTS WERE SET AS NOTED.

REGISTERED  
PROFESSIONAL  
LAND SURVEYOR

*Duane Berg*

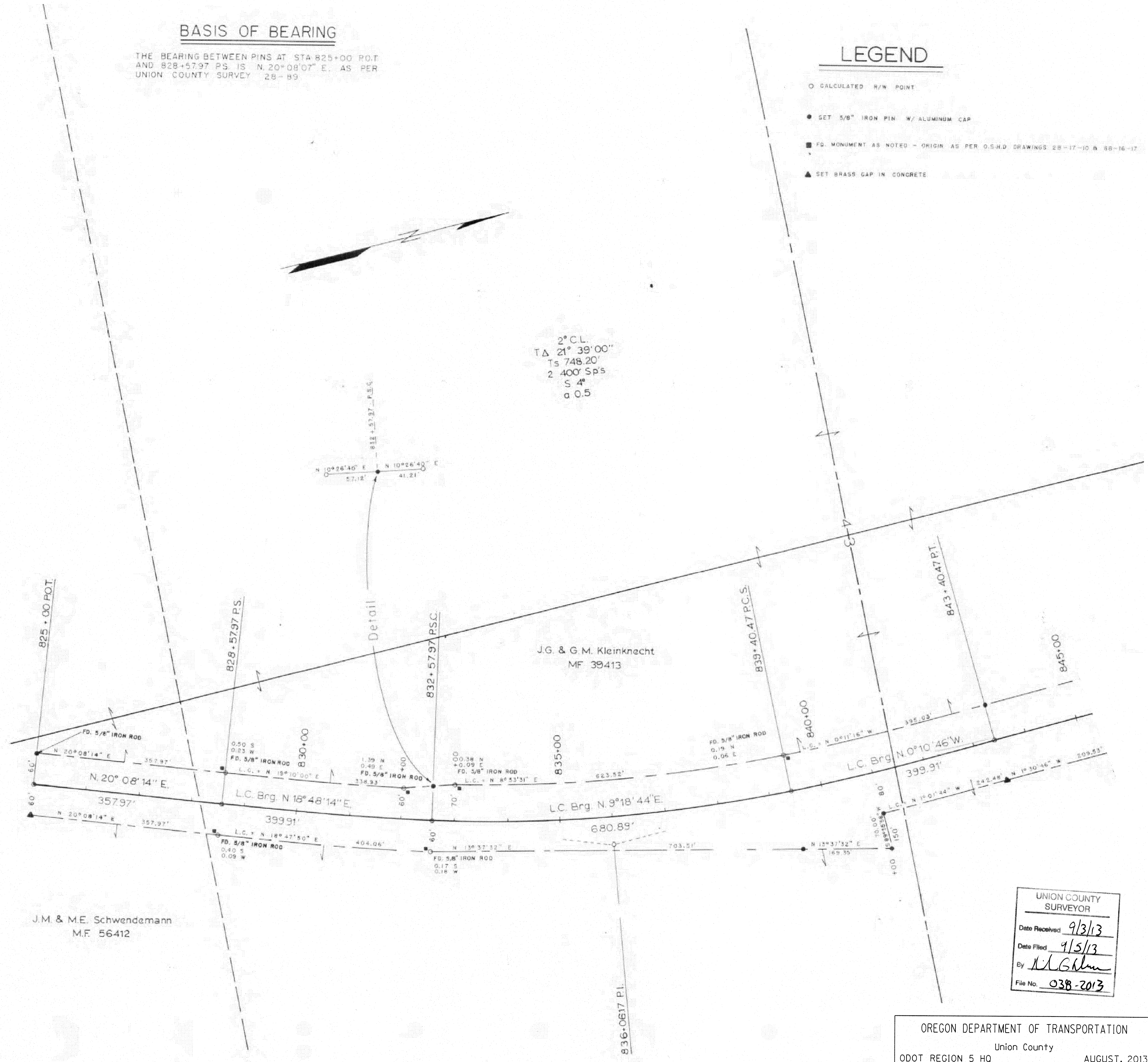
OREGON  
JULY 15, 1989  
DUANE BERG  
2042

NOTE

THIS MAP OF SURVEY, ALSO KNOWN AS OREGON DEPARTMENT OF TRANSPORTATION DRAWING NUMBER 10B-3-35, WAS COMPLETED CIRCA 1991 AS THE SURVEY FILING MAP FOR THE IMPROVEMENTS CONSTRUCTED ON THE IMBLER TO ELGIN (CLIMBING LANE) SECTION OF THE WALLOWA LAKE HIGHWAY (STATE HWY. 82). THE ORIGINAL MAP WAS NEVER FILED WITH THE COUNTY SURVEYOR AND WAS DRAFTED AS A ROLL MAP. THE PRESENT MAP IS THE ORIGINAL LEFT INTACT AND DIVIDED INTO SHEETS WITH MINOR ADDITIONS TO IDENTIFY SHEETS, AND LOCATION BY TOWNSHIP AND RANGE.

REFERENCE MATERIAL

OREGON DEPT. OF TRANSPORTATION DRAWING 28-17-10  
 OREGON DEPT. OF TRANSPORTATION DRAWING 88-16-17  
 UNION COUNTY SURVEY NUMBER 31-89 & 28-89



UNION COUNTY  
SURVEYOR

Date Received 9/3/13  
 Date Filed 9/5/13  
 By *M.G. Galt*  
 File No. 038-2013

OREGON DEPARTMENT OF TRANSPORTATION  
 Union County  
 ODOT REGION 5 HO AUGUST, 2013  
 3012 ISLAND AVE.  
 LA GRANDE, OR 97850 Sheet 1 of 4

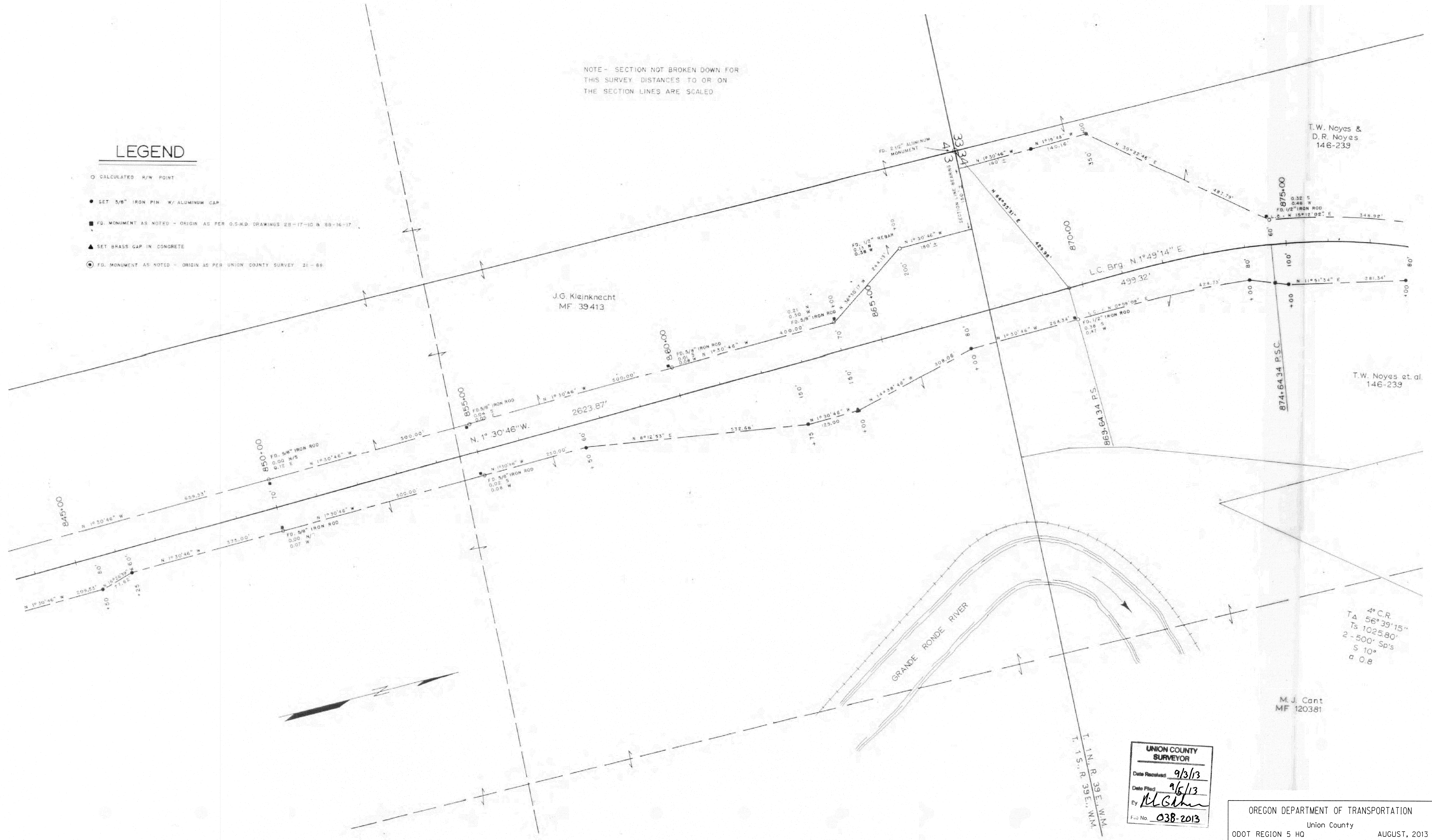
T. 1S., R. 39E., W.M.

T. 1N., R. 39E., W.M.

NOTE - SECTION NOT BROKEN DOWN FOR THIS SURVEY DISTANCES TO OR ON THE SECTION LINES ARE SCALED

### LEGEND

- CALCULATED R/W POINT
- SET 5/8" IRON PIN W/ ALUMINUM CAP
- F.D. MONUMENT AS NOTED - ORIGIN AS PER O.S.H.D. DRAWINGS 28-17-10 & 88-16-17
- ▲ SET BRASS GAP IN CONCRETE
- ⊙ F.D. MONUMENT AS NOTED - ORIGIN AS PER UNION COUNTY SURVEY 21-69



4° C.R.  
 TA 56° 39' 15"  
 Ts 1025.80'  
 2 - 500' Sp's  
 S 10°  
 a 0.8

UNION COUNTY  
 SURVEYOR  
 Date Received: 9/3/13  
 Date Filed: 9/6/13  
 By: *McGhee*  
 File No. 038-2013

OREGON DEPARTMENT OF TRANSPORTATION  
 Union County  
 ODOT REGION 5 HO  
 3012 ISLAND AVE.  
 LA GRANDE, OR 97850  
 AUGUST, 2013  
 Sheet 2 of 4

SECTION 34, T. 1N., R. 39E., W.M.

I.W. Noyes &  
D.R. Noyes  
146-239

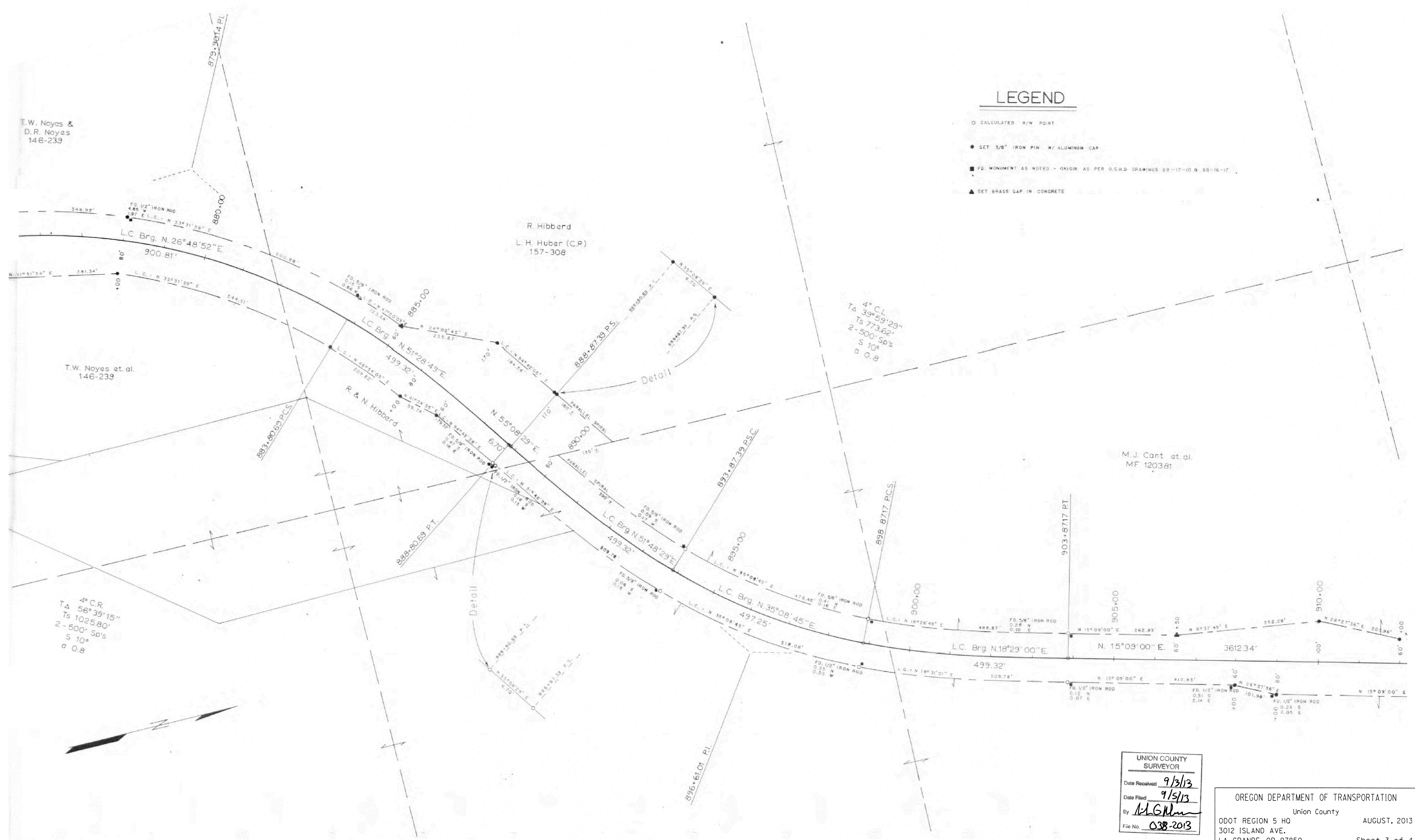
T.W. Noyes et al.  
146-239

R. Hibberd  
L. H. Huber (C.P.)  
157-308

M.J. Cant et al.  
MF 120381

LEGEND

- CALCULATED R/W POINT
- SET 3/8" IRON PIN W/ ALUMINUM CAP
- F.D. MONUMENT AS NOTED - ORIGIN AS PER O.S.H.D. DRAWINGS 28-17-10 & 68-16-17
- ▲ SET BRASS CAP IN CONCRETE



4° C.R.  
TA 56°39'15"  
Ts 1025.80'  
2-500' Sp's  
S 10°  
a 0.8

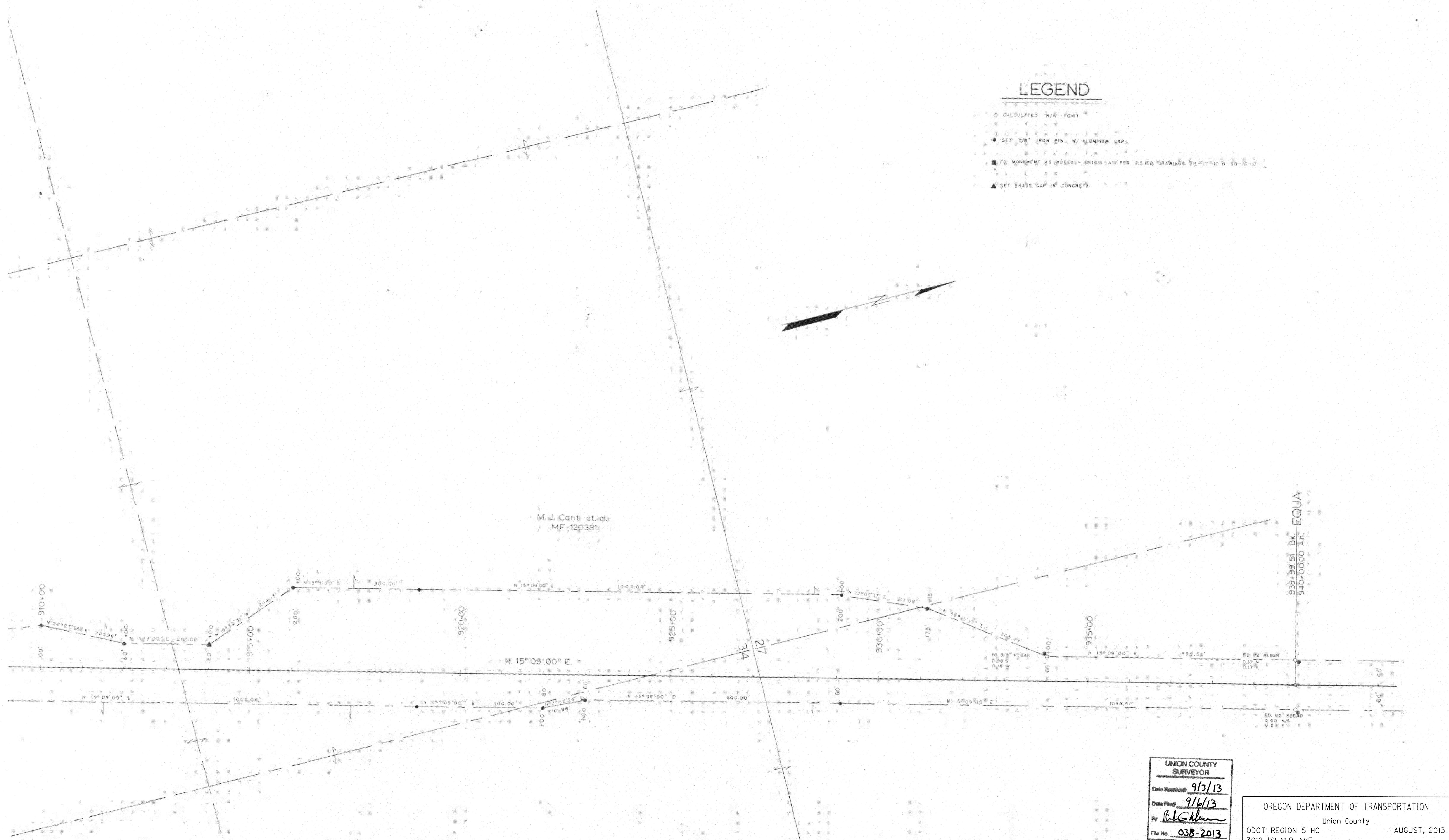
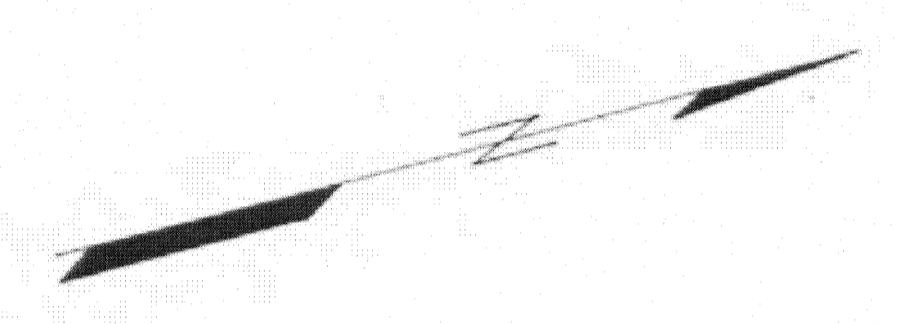
4° CL  
TA 39°59'29"  
Ts 773.62'  
2-500' Sp's  
S 10°  
a 0.8

UNION COUNTY  
SURVEYOR  
Date Received 9/3/13  
Date Filed 9/5/13  
By *A.G. Miller*  
File No. 038-2013

OREGON DEPARTMENT OF TRANSPORTATION  
Union County  
ODOT REGION 5 HQ  
3012 ISLAND AVE.  
LA GRANDE, OR 97850  
AUGUST, 2013  
Sheet 3 of 4

**LEGEND**

- CALCULATED R/W POINT
- SET 3/8" IRON PIN W/ ALUMINUM CAP
- FD. MONUMENT AS NOTED - ORIGIN AS PER O.S.H.D. DRAWINGS 28-17-10 & 88-16-17
- ▲ SET BRASS CAP IN CONCRETE



M. J. Cant et al.  
MF 120381

939+99.51 Bk. EQUA  
940+0000 A.H.

UNION COUNTY  
SURVEYOR  
Date Received 9/3/13  
Date Filed 9/6/13  
By *[Signature]*  
File No. 038-2013

OREGON DEPARTMENT OF TRANSPORTATION  
Union County  
ODOT REGION 5 HQ  
3012 ISLAND AVE.  
LA GRANDE, OR 97850  
AUGUST, 2013  
Sheet 4 of 4