

NORTHSTAR SURVEYING, INC.
 720 N.W. 4th Street
 Corvallis, Oregon 97330
 Phone: 541-757-9050

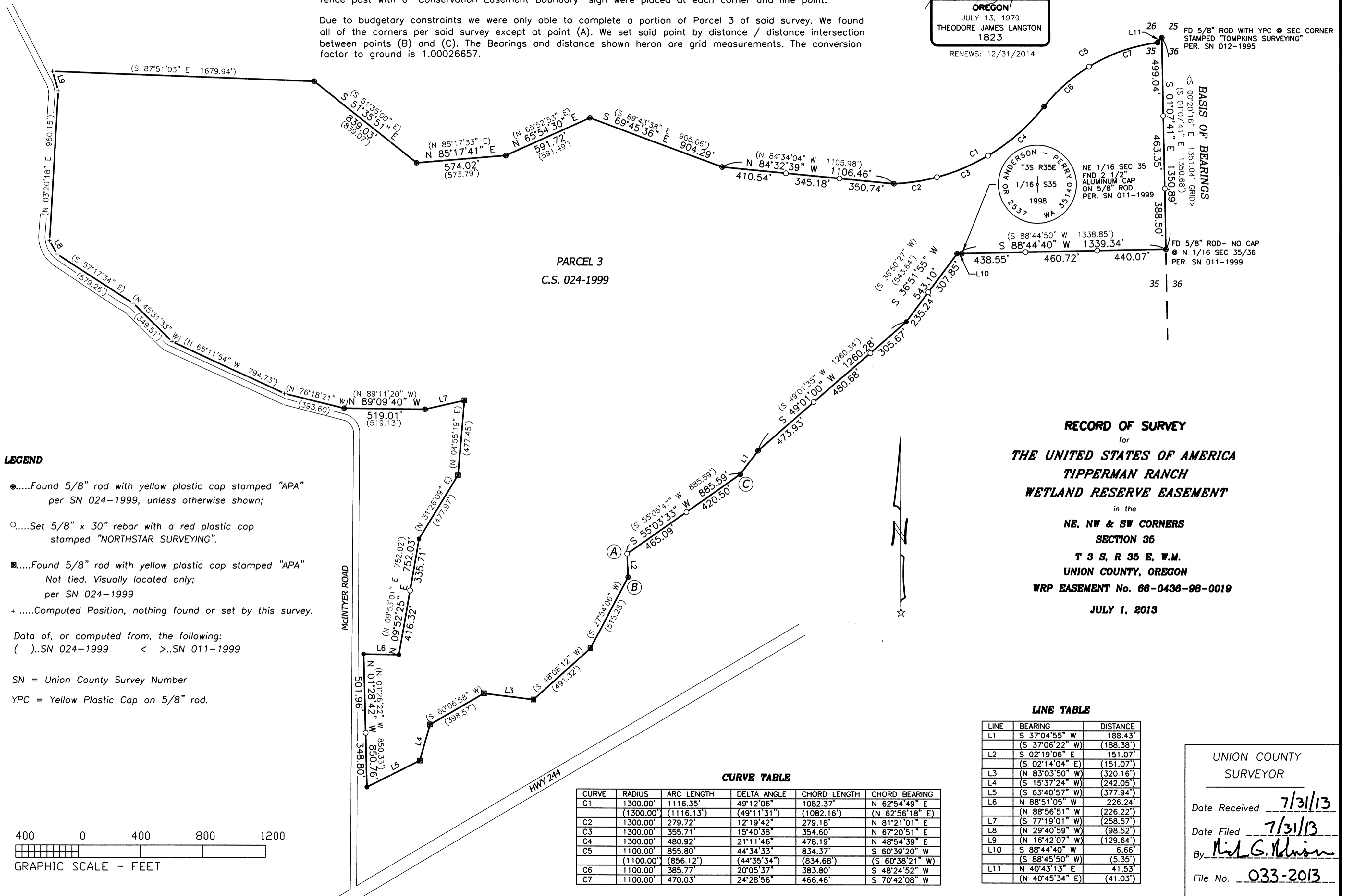
NARRATIVE

The purpose of this survey was to find or set corner monuments that were set for Union County Survey No. 024-1999 by Harmon E. McLendon of Anderson Perry and Associates, Inc. (AP) for the Natural Resources Conservation Service (NRCS), and Tipperman Ranch. That AP survey depicted the boundary of the Wetlands Reserve Program (WRP) Easement No. 66-0436-98-0019 that was recorded in Document #19980019, Union County Book of Records. The contract also stated that we place additional line monuments where the distance between the previous corner monuments exceeded 500 feet. We also were to place a green steel "U" shaped fence post with a "Conservation Easement Boundary" sign were placed at each corner and line point.

Due to budgetary constraints we were only able to complete a portion of Parcel 3 of said survey. We found all of the corners per said survey except at point (A). We set said point by distance / distance intersection between points (B) and (C). The Bearings and distance shown hereon are grid measurements. The conversion factor to ground is 1.00026657.

REGISTERED
**PROFESSIONAL
 LAND SURVEYOR**

Theodore James Langton
OREGON
 JULY 13, 1979
THEODORE JAMES LANGTON
 1823
 RENEWS: 12/31/2014



SURVEY NUMBER 033-2013

UNION COUNTY
 SURVEYOR

Date Received 7/31/13
 Date Filed 7/31/13
 By Ned G. Johnson
 File No. 033-2013