

# BASIS OF BEARING

Solar observation taken at the Northwest corner of Section 19, Township 4 South, Range 40 East of the Willamette Meridian.

**SCALE: 1" = 100'**

## REFERENCE MATERIAL

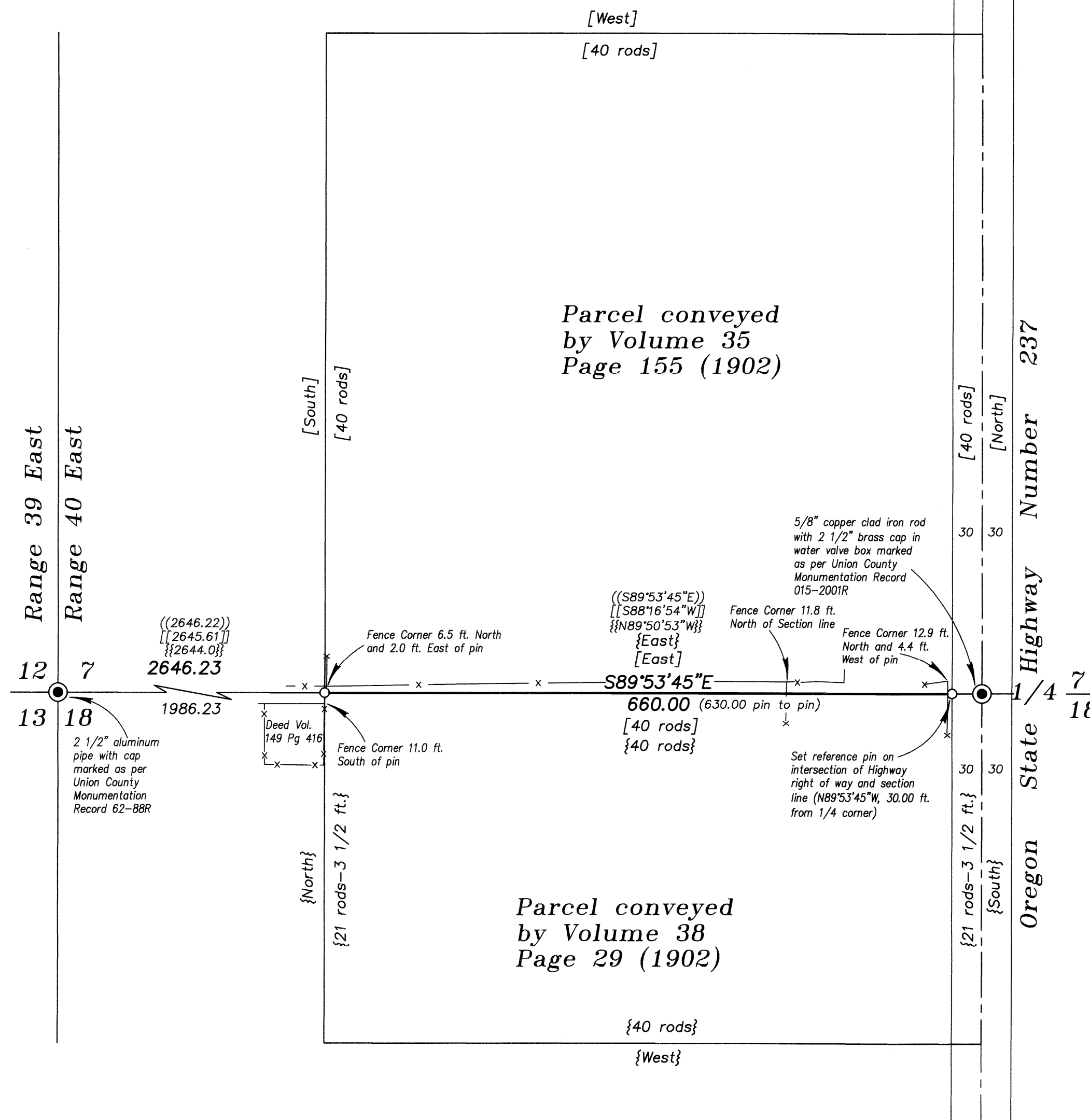
Union County Monumentation Records  
 Survey Number 14-71  
 Survey Number 31-87  
 Survey Number 007-2001  
 Survey Number 002-2009  
 Minor Partition 201300117  
 ODOT Strip Map No. 6B-19-02  
 ODOT Strip Map No. 6B-22-11

### DEED REFERENCES

Deed Volume 35 Page 155  
 Deed Volume 38 Page 29  
 Deed Volume 123 Page 309  
 Deed Volume 137 Page 639  
 Deed Volume 149 Page 416  
 Microfilm Document Number 152107  
 Microfilm Document Number 20010383  
 Microfilm Document Number 20015480  
 Microfilm Document Number 20020786  
 Microfilm Document Number 20035101  
 Microfilm Document Number 20040034  
 Commissioner's Journal Book R, Page 527

## LEGEND

- Found monument as described, marked as per Union County monumentation records
- Set 5/8" x 30" iron pin with plastic cap marked "BGB SURVEY MARKER"
- x-x- Existing Fenceline
- - - Centerline
- { } Record measurement as per Survey Number 14-71
- (( )) Record measurement as per Survey Number 002-2009
- [[ ]] Record measurement as per Survey Number 007-2001
- [ ] Record Information of Deed Volume 35 Page 155
- { } Record Information of Deed Volume 38 Page 29



## NARRATIVE

This survey was done at the request of Don Gray. The purpose of this survey was to monument the line between sections 7 and 18 between those tracts conveyed by deed volume 35 page 155 and deed volume 38 page 29. These deeds call for the tracts to be 40 rods (660 feet) in width. This is also the dimension used for the description of the small tract conveyed by deed volume 149 page 416 to the West of the Southerly tract shown on this survey. I show the two tracts at record position to illustrate the ownerships. Mr. Gray did not wish to locate the other lines of the tracts by survey. I establish the section line by the controlling monuments at the Southwest corner and the South 1/4 corner of Section 7. I place the Westerly pin at record distance (660 feet) from the South 1/4 corner of Section 7. This falls South of an existing fence line as shown. There is also an irrigation line between the Section line and the fence not depicted on this map. I have discussed this with Mr. Gray on site. I place the highway right of way 30 feet West of the 1/4 corner monument as did minor partition plat number 201300117. See that partition plat for a discussion on highway right of way widths in this area. I find no other unusual conditions on this survey.

REGISTERED  
 PROFESSIONAL  
 LAND SURVEYOR

OREGON  
 JULY 17, 1986  
**RICK G. ROBINSON**  
 2219

Renewal Date: Dec. 31, 2014

UNION COUNTY  
 SURVEYOR

Date Received 7/29/13

Date Filed 7/29/13

By *[Signature]* DEPUTY

File No. 032-2013

**BAGETT, GRIFFITH & BLACKMAN**  
 2006 Adams Avenue, LaGrande, Oregon  
 Map of Survey

Monumentation of the line between Sections 7 and 18 between selected tracts in the Southwest 1/4 of Section 7 and the Northwest 1/4 of Section 18, Township 4 South, Range 40 East of the Willamette Meridian  
 UNION COUNTY, OREGON

SURVEYED FOR	Don and Brenda Gray	
SURVEYED BY	R.G.R.	7/13
Scale: 1" = 100'	Drawn by: R.G.R.	7/13

**SURVEY NUMBER 032-2013**