

## BASIS OF BEARING

True Geodetic North at the corner common to Sections 5, 6, 7 and 8, Township 4 South, Range 41 East of the Willamette Meridian as determined by GPS observation (NAD-83 (1991) datum)

SCALE: 1" = 400'

## LEGEND

- Found monument as noted, marked as per Union County monumentation records
- ⊙ Set 2 1/2" x 30" aluminum pipe with aluminum cap, marked as per Union County monumentation records, filed separately
- Set steel fencepost on line
- Line parked with flagging and orange paint on adjacent trees
- ( ) Record measurement as per GLO Contract No. 320, performed by H. M. Thatcher, dated April 1, 1879

## REFERENCE MATERIAL

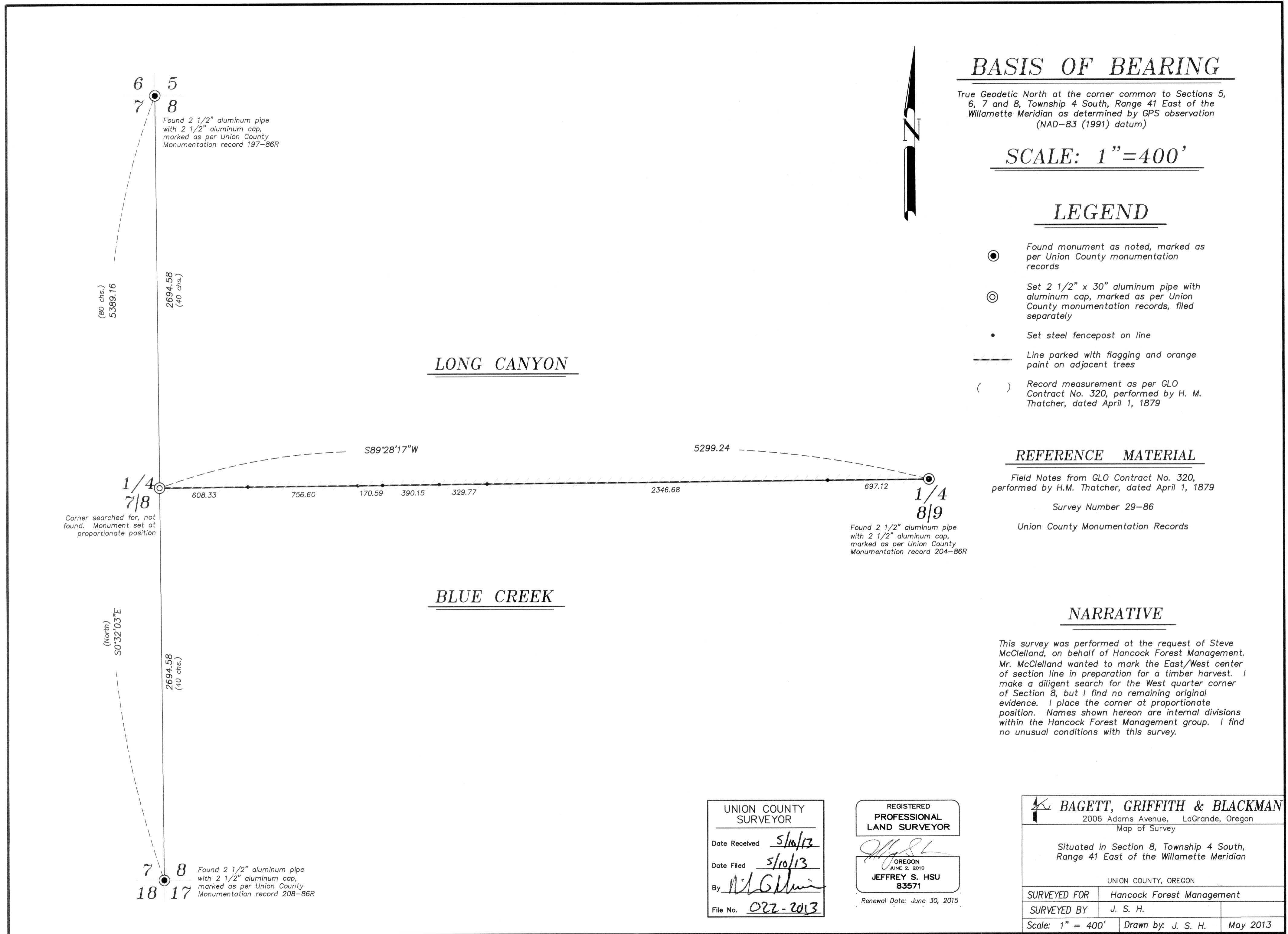
Field Notes from GLO Contract No. 320, performed by H.M. Thatcher, dated April 1, 1879

Survey Number 29-86

Union County Monumentation Records

## NARRATIVE

This survey was performed at the request of Steve McClelland, on behalf of Hancock Forest Management. Mr. McClelland wanted to mark the East/West center of section line in preparation for a timber harvest. I make a diligent search for the West quarter corner of Section 8, but I find no remaining original evidence. I place the corner at proportionate position. Names shown hereon are internal divisions within the Hancock Forest Management group. I find no unusual conditions with this survey.



UNION COUNTY SURVEYOR	
Date Received	5/10/13
Date Filed	5/10/13
By	<i>[Signature]</i>
File No.	022-2013

REGISTERED PROFESSIONAL LAND SURVEYOR
<i>[Signature]</i>
OREGON JUNE 2, 2010 JEFFREY S. HSU 83571
Renewal Date: June 30, 2015

<b>BAGETT, GRIFFITH &amp; BLACKMAN</b> 2006 Adams Avenue, LaGrande, Oregon Map of Survey	
Situated in Section 8, Township 4 South, Range 41 East of the Willamette Meridian	
UNION COUNTY, OREGON	
SURVEYED FOR	Hancock Forest Management
SURVEYED BY	J. S. H.
Scale: 1" = 400'	Drawn by: J. S. H. May 2013

**SURVEY NUMBER 022-2013**