

# LOT LINE ADJUSTMENT

## LEGEND

- ◆ Found "U" shaped iron bar set by unrecorded survey, possibly set by Jack Ricker
- Found 5/8" iron pin set by Survey Number 51-75
- Found 5/8" iron pin with no cap set by Survey Number 33-76
- Found 5/8" iron pin with plastic cap marked "BGB SURVEY MARKER" set by Minor Partition Plat Number 1997-05
- ◆ Found 5/8" iron pin with plastic cap marked "BGB SURVEY MARKER" set by the Major Partition Plat Number 20030005
- Found 5/8" iron pin with plastic cap marked "BGB SURVEY MARKER" set by the Minor Partition Plat Number 20070043T
- △ Found 5/8" iron pin with plastic cap marked "BGB SURVEY MARKER" set by the Minor Partition Plat Number 20090006T
- ▲ Found 5/8" iron pin with plastic cap marked "BGB SURVEY MARKER" set by the Minor Partition Plat Number 20120006T
- ⊙ Found 5/8" iron pin with aluminum cap in water valve box set gby survey number 029-2010
- Set 5/8"x30" iron pin with plastic cap marked "BGB SURVEY MARKER"
- ( ) Record information of Survey Number 15-82
- [ ] Record information of Minor Partition Plat Number 1997-05
- ⊕ Existing Utility Pole
- Centerline
- - - Easement Line
- P T - Existing Overhead Power and Telephone Line
- ▨ Adjusted Area (Portion of Parcel 2 to accrue to Parcel 1)

## BASIS OF BEARING

Forward bearing as published by the U.S.C. and G.S. from Δ COLLEGE to Δ VALLEY Dated 1946.

SCALE: 1" = 40'

## REFERENCE MATERIAL

Survey Number 51-75  
 Survey Number 33-76  
 Survey Number 14-77  
 Survey Number 15-82  
 Survey Number 15-85  
 Survey Number 013-2000  
 Survey Number 020-2000  
 Survey Number 026-2009  
 Survey Number 029-2010  
 Survey Number 012-2011  
 Minor Partition Plat Number 1997-05  
 Major Partition Plat Number 20030005  
 Minor Partition Plat Number 20070043T  
 Minor Partition Plat Number 20090006T  
 Minor Partition Plat Number 20090007T  
 Minor Partition Plat Number 20120006T  
 Minor Partition Plat Number 20120007T

## DEED REFERENCES

Deed Volume 149 Page 117  
 Union County Court Order Number 2009-41  
 Union County Court Order Number 2012-07

## NARRATIVE

This survey was done at the request of Douglas Briney. This survey is being done to document a lot line adjustment between Parcels 1 and 2 of Minor Partition Plat 20120006T. I found the monuments controlling the exterior of this partition. 12th Street has also been legalized, vacating a portion of land on the East side of Parcel 2. I place the adjusted line 85 feet West and parallel with the newly defined 12th Street right of way to comply with the minimum depth standard for adjusted Parcel 2. I did not reset the parcel corners along the new 12th street right of way. I find no unusual conditions on this partition.

UNION COUNTY SURVEYOR  
 Date Received 6/18/13  
 Date Filed 6/18/13  
 By [Signature]  
 File No. 021-2013

REGISTERED PROFESSIONAL LAND SURVEYOR  
 [Signature]  
 OREGON JULY 17, 1988  
 RICK G. ROBINSON 2219  
 Renewal Date: Dec. 31, 2014

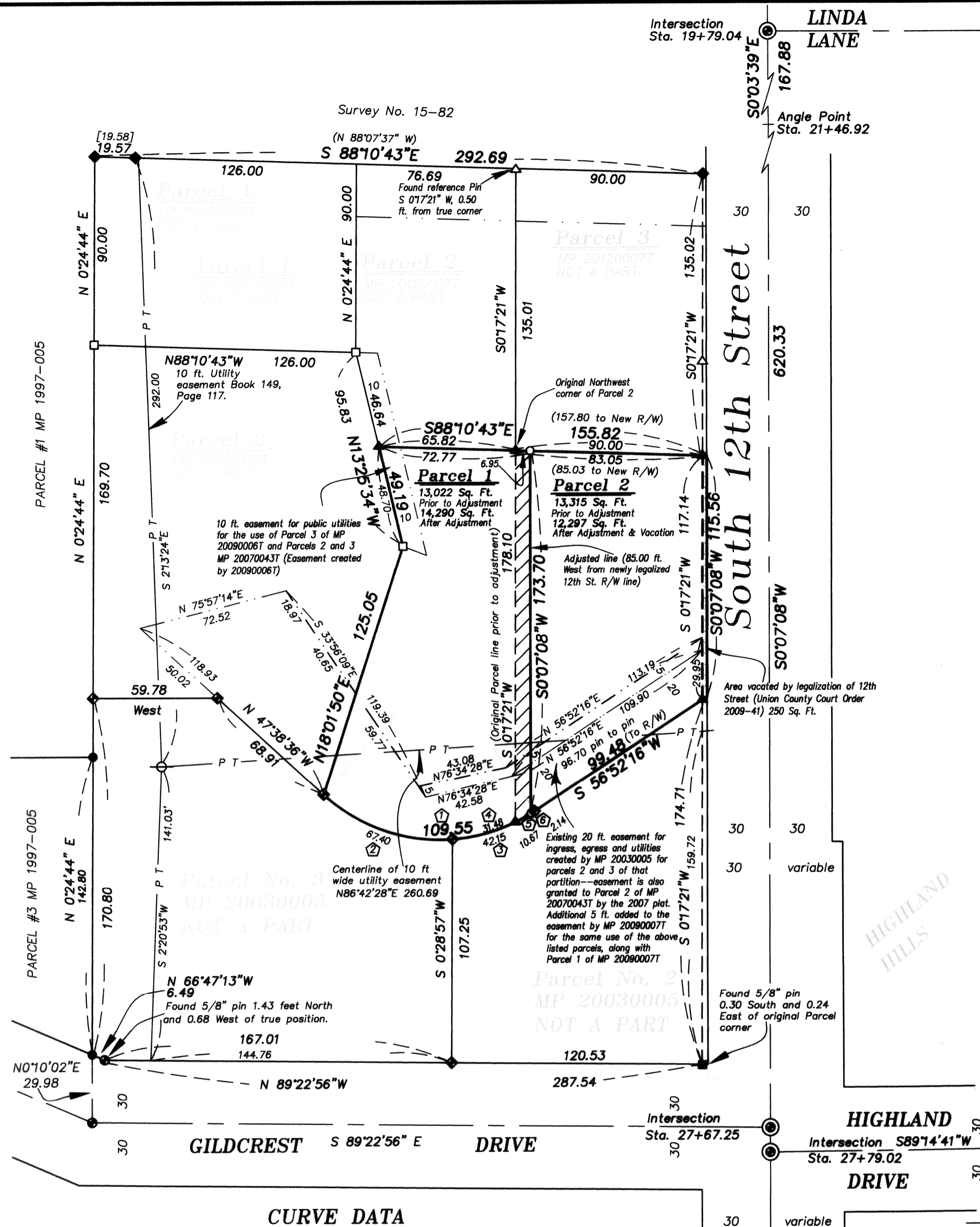
BAGETT, GRIFFITH & BLACKMAN  
 2006 Adams Avenue, LaGrande, Oregon  
 Map of Survey  
 LOT LINE ADJUSTMENT  
 Adjustment of common line between Parcels 1 and 2 of Minor Partition Plat Number 20120006T, situated in the Southeast quarter of the Northwest quarter of Section 17, Township 3 South, Range 38 East of the Willamette Meridian UNION COUNTY, OREGON

SURVEYED FOR	Doug Briney
SURVEYED BY	R.G.R.
Scale: 1" = 40'	Drawn by: R.G.R.
	6/2013
	6/2013

## CITY APPROVAL

Approved as a Lot Line Adjustment this 18<sup>th</sup> day of June, 2013

[Signature]  
 Michael J. Boquist  
 City of LaGrande Planner



## CURVE DATA

Total Curve South line of Partition	North line Parcel 3 MP 20030005	North line Parcel 2 MP 20030005	South line Parcel 1 MP 20120006T	South line Adjusted Tract	South line Parcel 2 MP 20120006T After Adj.
Δ = 75°29'08"	Δ = 46°26'27"	Δ = 29°02'41"	Δ = 21°41'32"	Δ = 5°52'49"	Δ = 1°28'21"
R = 83.15'	R = 83.15'	R = 83.15'	R = 83.15'	R = 83.15'	R = 83.15'
L = 109.55'	L = 67.40'	L = 42.15'	L = 31.48'	L = 8.53'	L = 2.14'
L.C. = 101.79'	L.C. = 65.57'	L.C. = 41.70'	L.C. = 31.29'	L.C. = 8.53'	L.C. = 2.14'
N 85°23'10"W	N 70°51'50"W	S 71°23'37"W	N 75°04'11"E	N 61°17'01"E	N 57°36'27"E

SURVEY NUMBER 021-2013