

# BASIS OF BEARING

The bearing between monuments at the intersection of -E- Street and 2nd Street and -B- Street and 2nd Street being North 52°01'38" East, as per Survey Number 039-2006

SCALE: 1" = 50'

## LEGEND

- Found 1 1/2" Aluminum cap in monument box, set by Survey Number 033-2005
- ⊙ Found 1" iron rod, set by plat of North Powder
- Found 5/8" iron pin, set by Survey Number 043-1993
- ◆ Found 5/8" iron pin set by Survey Number 17-82
- ▲ Found 5/8" iron pin set by Survey Number 30-73
- Found railroad spike as per Survey Number 033-2005
- Set 5/8" x 30" iron pin with plastic cap marked BGB SURVEY MARKER
- ( ) Record measurement as per Plat of North Powder
- [ ] Record measurement as per Survey Number 043-1993
- { } Record measurement as per Survey Number 041-1994
- - - Centerline

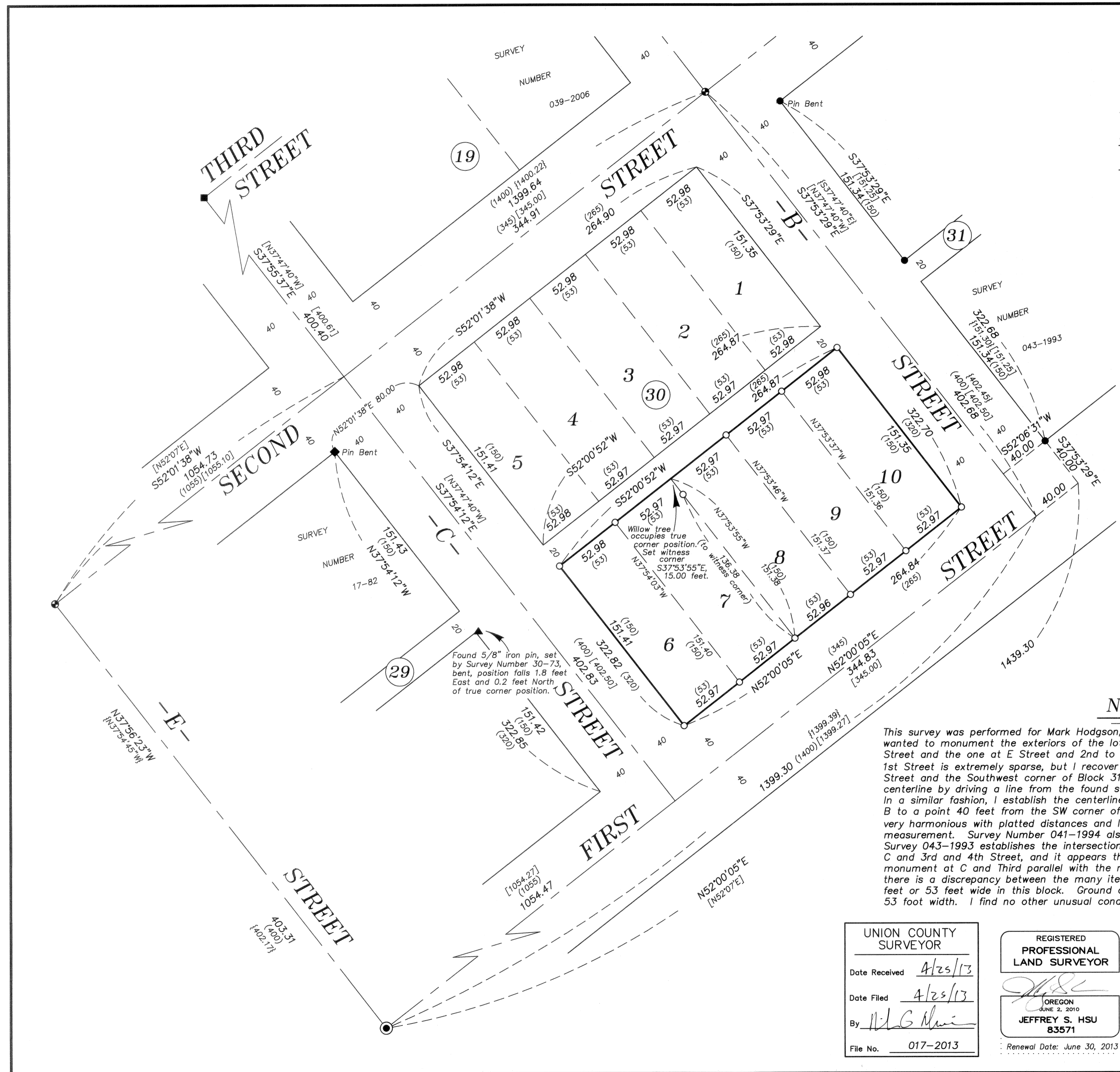
## REFERENCE MATERIAL

- Survey Number 12-73
- Survey Number 30-73
- Survey Number 17-82
- Survey Number 043-1993
- Survey Number 041-1994
- Survey Number 033-2005
- Plat of North Powder

DEED REFERENCES  
Microfilm Document Number 20122204

## NARRATIVE

This survey was performed for Mark Hodgson, on behalf of the owner of the land within. Mr. Hodgson wanted to monument the exteriors of the lots. I hold the aluminum cap monument at 2nd Street and B Street and the one at E Street and 2nd Street to establish the 2nd Street right of way. Monumentation along 1st Street is extremely sparse, but I recover the 1" square pin at the intersection of E Street and 1st Street and the Southwest corner of Block 31, set by Hanley in Survey 043-1993. I place the First Street centerline by driving a line from the found square pin to a point 40 feet from the SW corner of Block 31. In a similar fashion, I establish the centerline of B Street by driving a line from the monument at 2nd and B to a point 40 feet from the SW corner of Block 31. The distances along 1st and 2nd Streets are very harmonious with platted distances and I establish the intersections at 'C' Street by proportionate measurement. Survey Number 041-1994 also uses proportionate measurement to place these intersections. Survey 043-1993 establishes the intersections along C Street by bearing intersect from the monuments at C and 3rd and 4th Street, and it appears that Survey 30-73 establishes the centerline by running from the monument at C and Third parallel with the monuments along E Street. As mentioned in many surveys, there is a discrepancy between the many iterations of the North Powder plat as to whether lots are 50 feet or 53 feet wide in this block. Ground distances seem to indicate the lots were intended to have a 53 foot width. I find no other unusual conditions with this survey.



UNION COUNTY SURVEYOR

Date Received 4/25/13

Date Filed 4/25/13

By J. S. H.

File No. 017-2013

REGISTERED PROFESSIONAL LAND SURVEYOR

J. S. H.

OREGON JUNE 2, 2010

JEFFREY S. HSU 83571

Renewal Date: June 30, 2013

**BAGETT, GRIFFITH & BLACKMAN**  
2006 Adams Avenue, LaGrande, Oregon  
Map of Survey

Lots 6, 7, 8, 9 and 10, Block 30,  
Town of North Powder

UNION COUNTY, OREGON

SURVEYED FOR	Mark Hodgson
SURVEYED BY	J. S. H.
Scale: 1" = 50'	Drawn by: J. S. H. April 2013