

BASIS OF BEARING

Forward bearing as published by the U.S.C. and G.S. from Δ COLLEGE to Δ VALLEY Dated 1946.

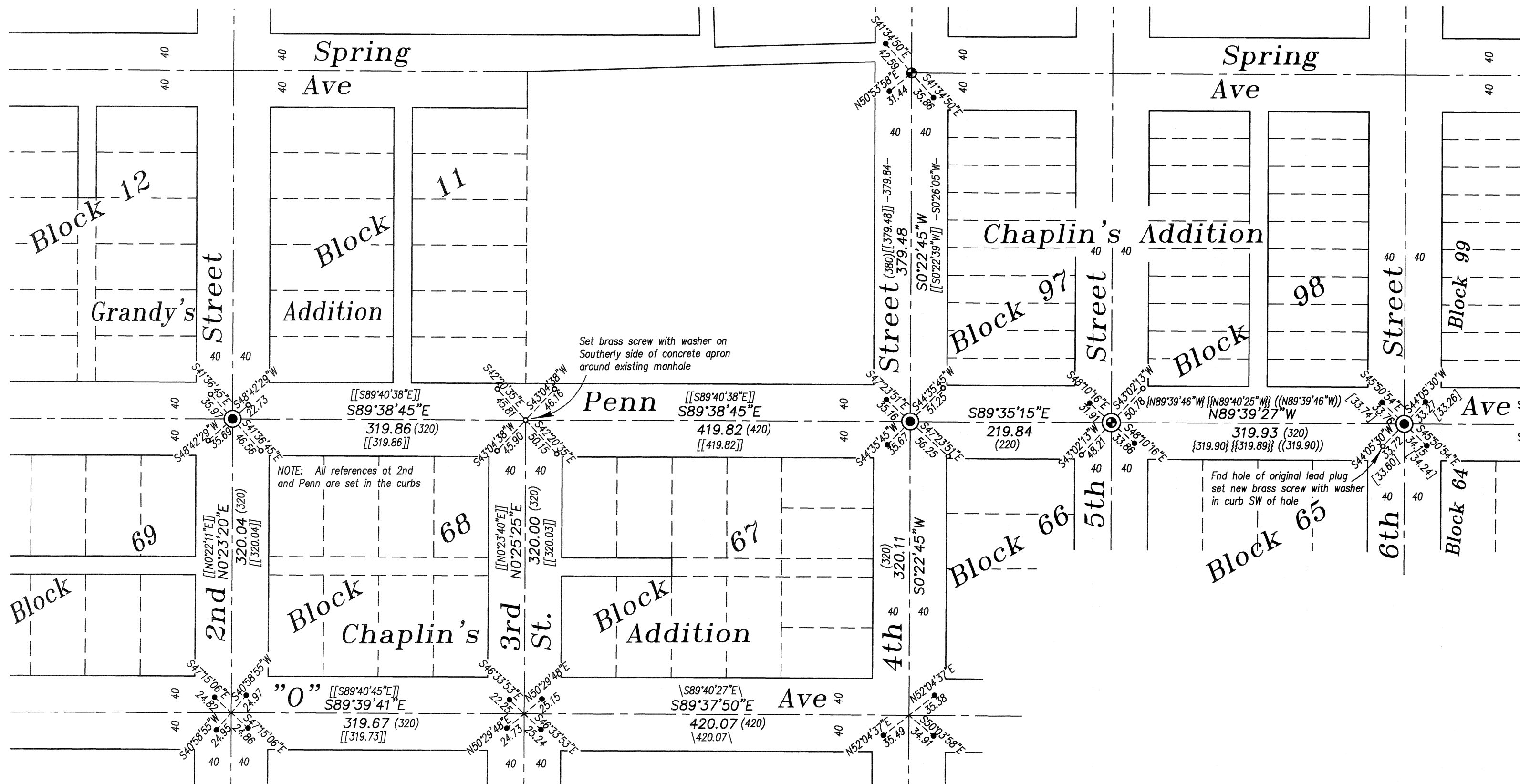
SCALE: 1"=100'

REFERENCE MATERIAL

Plat of Chaplin's Addition to La Grande (Supplemental Plat)
 Plat of Grandy's Addition to La Grande
 Survey Number 11-78
 Survey Number 68-79
 Survey Number 44-80
 Survey Number 70-80
 Survey Number 51-81
 Survey Number 035-1993
 Survey Number 014-2001

LEGEND

- Found lead plug with brass screw set by Survey Number 18-89 (1922 monumentation of La Grande) set in water valve box
- ⊙ Found 3/4" iron pipe set by Survey Number 18-89 (1922 monumentation of La Grande) and remonumented with 2" brass disk marked "BAGETT GRIFFITH AND BLACKMAN" set in concrete
- Found brass screw in lead plug for intersection reference
- ⊙ Set 2" brass disk marked "BAGETT GRIFFITH AND BLACKMAN" placed in concrete
- Set brass screw in lead plug with brass washer marked "OPLS 2219" in sidewalk unless otherwise noted
- Centerline
- { } Record information of Survey Number 11-78
- [[]] Record information of Survey Number 68-79
- - - Record information of Survey Number 44-80
- { } Record information of Survey Number 70-80
- [] Record information of Survey Number 51-81
- () Record information of Survey Number 18-89 (1922 Monumentation of La Grande)
- (()) Record information of Survey Number 035-1993
- \ \ Record information of Survey Number 014-2001



NARRATIVE

This survey was done at the request of Norm Paullus on behalf of the City of La Grande Public Works Department. The purpose of this survey is to set intersection monuments along Penn Avenue from Second Street to Sixth Street. These intersections were involved in a recent street improvement and needed to be remonumented. The intersection of Penn and 6th was positioned from the found lead plug references. Only the hole of the Southwest plug was remaining, so a new brass washer was set to perpetuate this reference. A 3/4" pipe and two lead plug references were found at the intersection of Penn and 5th. I found all four of the lead plug references along "O" Avenue at 2nd and 3rd Streets. I place the intersection of 4th and "O" at record distance of survey number 014-2001 East of 3rd and "O" to the intersection of a line from the Southwest and Northeast lead plug references. I then drive a line North to the found lead plug at the intersection of 4th and Spring Avenue. I place the intersection of 4th and Penn at record distance of Survey Number 68-79 (349.48) South from the lead plug monument. I place the intersection of 2nd and Penn at record distance of Survey Number 68-79 (320.04) North from the intersection of 2nd and "O" and at record distance of Survey Number 68-79 (739.68) West of the intersection of 4th and Penn. I then place the intersection of 3rd and Penn at proportionate distance along the centerline of Penn, which also matches the record distance of the 1979 survey. This method is very harmonious with the calls of the original plats and of the existing surveys in the area. I find no unusual conditions on this survey.

REGISTERED
 PROFESSIONAL
 LAND SURVEYOR

 OREGON
 JULY 17, 1988
 RICK G. ROBINSON
 2219
 Renewal Date: Dec. 31, 2014

UNION COUNTY
 SURVEYOR
 Date Received 3/25/13
 Date Filed 3/25/13
 By
 File No. 014-2013

BAGETT, GRIFFITH & BLACKMAN
 2006 Adams Avenue, LaGrande, Oregon
 Map of Survey

Monumentation of Penn Avenue
 from Second Street to Sixth Street
 City of La Grande
 UNION COUNTY, OREGON

SURVEYED FOR	City of La Grande	
SURVEYED BY	R.G.R.	3/2013
Scale: 1" = 100'	Drawn by: R.G.R.	3/2013