

# BASIS OF BEARING

Forward bearing as published by the U.S.C. and G.S. from  $\Delta$  COLLEGE to  $\Delta$  VALLEY Dated 1946.

SCALE: 1" = 60'

## LEGEND

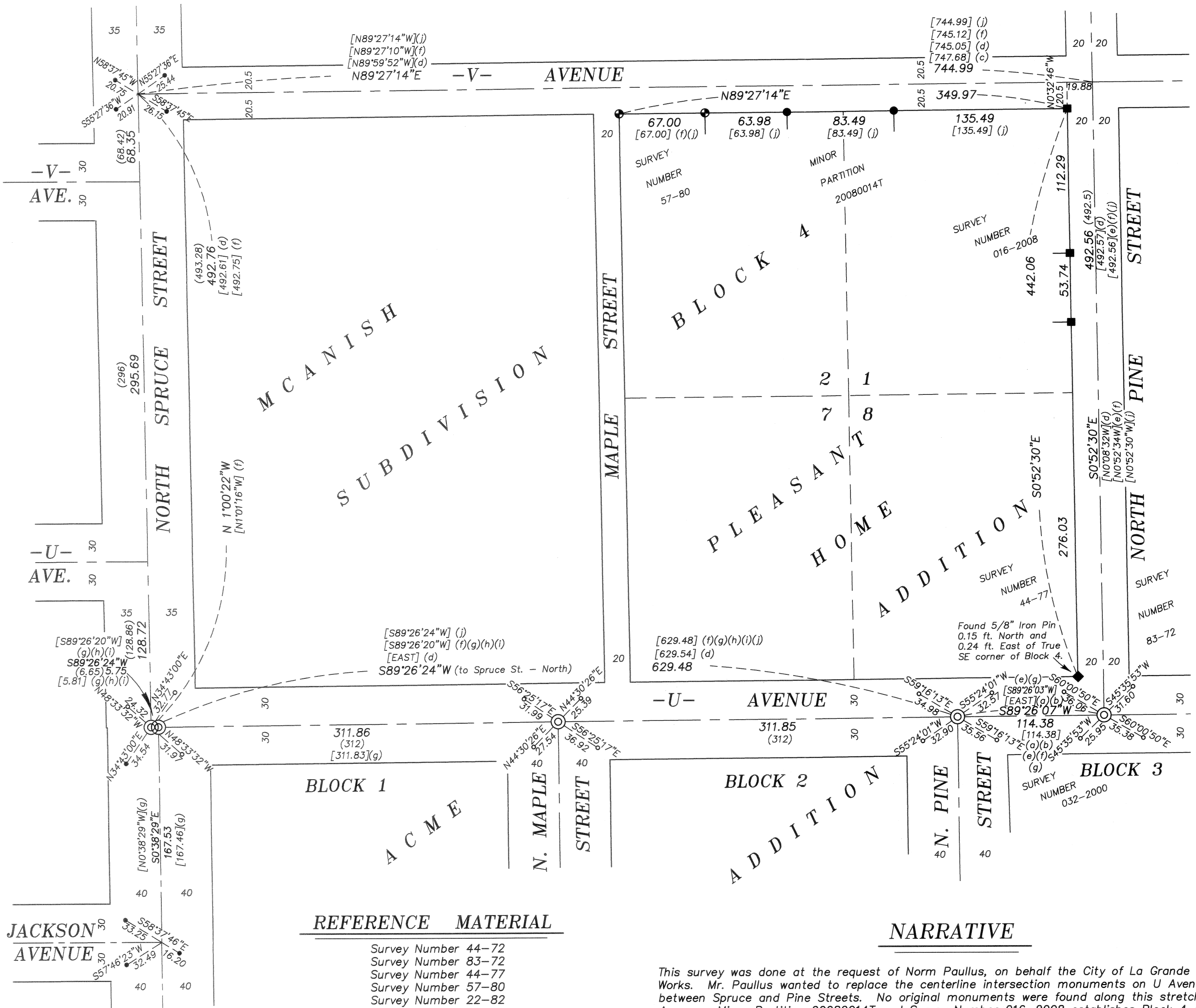
- Found brass screw in lead plug reference monument
- ◆ Found 5/8" iron pin set by Survey Number 44-77
- ⊕ Found 5/8" iron pin set by Survey Number 57-80
- Found 5/8" iron pin with plastic cap marked BGB SURVEY MARKER set by Minor Partition 20080014T
- Found 5/8" iron pin with plastic cap marked BGB SURVEY MARKER, set by Survey Number 016-2008
- ⊙ Set 2" brass cap in concrete
- Set lead plug reference monument, with brass screw and washer marked OPLS 83571
- ( ) Record measurement as per Survey Number 18-89
- [ ] Record measurement as per county survey (SEE TABLE)

## COUNTY SURVEY RECORD INFORMATION

- (a) Survey Number 44-72
- (b) Survey Number 83-72
- (c) Survey Number 24-74
- (d) Survey Number 44-77
- (e) Survey Number 67-78
- (f) Survey Number 57-80
- (g) Survey Number 17-88
- (h) Survey Number 032-2000
- (i) Survey Number 044-2001
- (j) Survey Number 016-2008

UNION COUNTY SURVEYOR  
 Date Received 3/25/13  
 Date Filed 3/25/13  
 By *J. S. H.*  
 File No. 013-2013

REGISTERED PROFESSIONAL LAND SURVEYOR  
  
 OREGON JUNE 2, 2010  
 JEFFREY S. HSU 83571  
 Renewal Date: June 30, 2013



**REFERENCE MATERIAL**

Survey Number 44-72  
 Survey Number 83-72  
 Survey Number 44-77  
 Survey Number 57-80  
 Survey Number 22-82  
 Survey Number 17-88  
 Survey Number 18-89  
 Survey Number 032-2000  
 Survey Number 019-2007  
 Survey Number 023-2007  
 Survey Number 016-2008  
 Partition Plat 1995-24  
 Partition Plat 1997-08  
 Partition Plat 20080014T  
 Plat of Acme Addition to La Grande  
 Plat of Mc Anish Subdivision to La Grande  
 Plat of Pleasant Home Addition to La Grande,

**NARRATIVE**

This survey was done at the request of Norm Paullus, on behalf the City of La Grande Public Works. Mr. Paullus wanted to replace the centerline intersection monuments on U Avenue between Spruce and Pine Streets. No original monuments were found along this stretch of U Avenue. Minor Partition 20080014T and Survey Number 016-2008 establishes Block 4 of Pleasant Home Addition, based on Survey Number 57-80. I use the recover monumentation from these surveys to place the U Street right of way. The Maple Street intersection (South) was placed by proportion based on the original McLain position. I find no unusual conditions with this survey.

**BAGETT, GRIFFITH & BLACKMAN**  
 2006 Adams Avenue, LaGrande, Oregon  
 Map of Survey  
 Intersection monuments along U Ave. between Spruce Street and Pine Street, City of La Grande  
 UNION COUNTY, OREGON  
 SURVEYED FOR City of La Grande  
 SURVEYED BY J. S. H.  
 Scale: 1" = 60' Drawn by: J. S. H. Mar. 2013