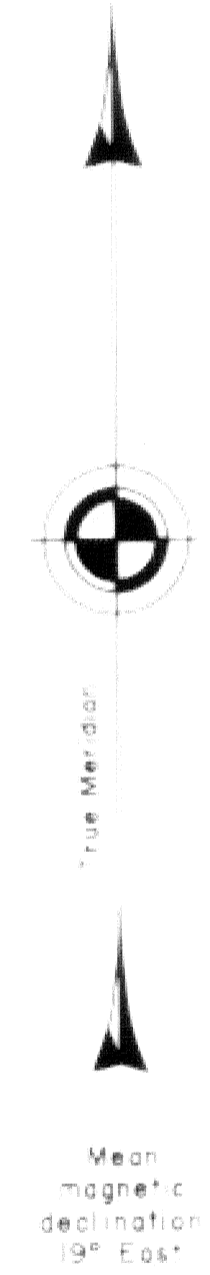
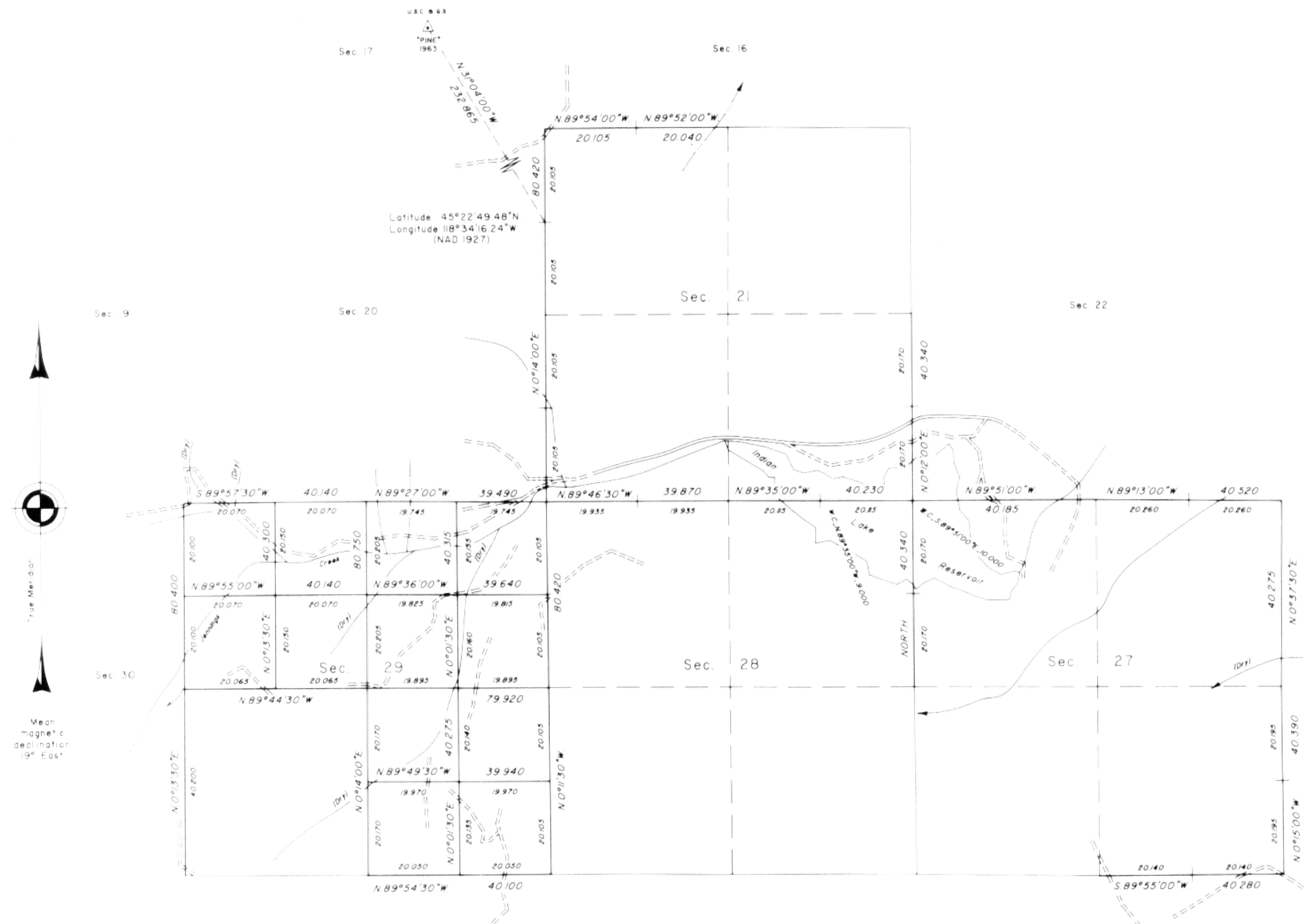


DEPENDENT RESURVEY AND SUBDIVISION OF SECTIONS



A history of surveys is contained in the field notes.

This plat represents a dependent resurvey of a portion of the south boundary of the Umatilla Indian Reservation and subdivisional lines, T. 2 S., R. 34 E., Willamette Meridian, Oregon, designed to restore the corners in their true original locations according to the best available evidence, and the subdivision of sections 29, 33, 34 and 35.

The lottings and areas are as shown on the plat approved June 14, 1890.

The survey was executed by Richard L. Johnson, Cadastral Surveyor, beginning July 28, 1987, and completed June 26, 1989, pursuant to Special Instructions dated August 22, 1986, under Group Number 1343, Oregon.

Timber in this area consists of ponderosa pine, arch, fir and spruce.

UNITED STATES DEPARTMENT OF THE INTERIOR
BUREAU OF LAND MANAGEMENT

Portland, Oregon March 8, 1991

This plat is strictly conformable to the approved field notes, and the survey, having been correctly executed in accordance with the requirements of law and the regulations of this Bureau, is hereby accepted.

For the Director

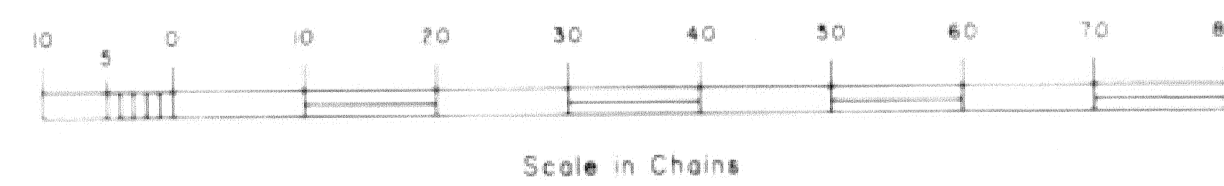
Wayne M. Hansen

Chief Cadastral Surveyor of Oregon

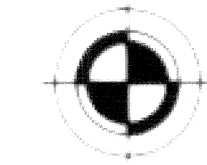
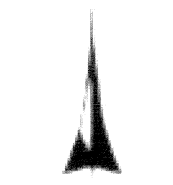
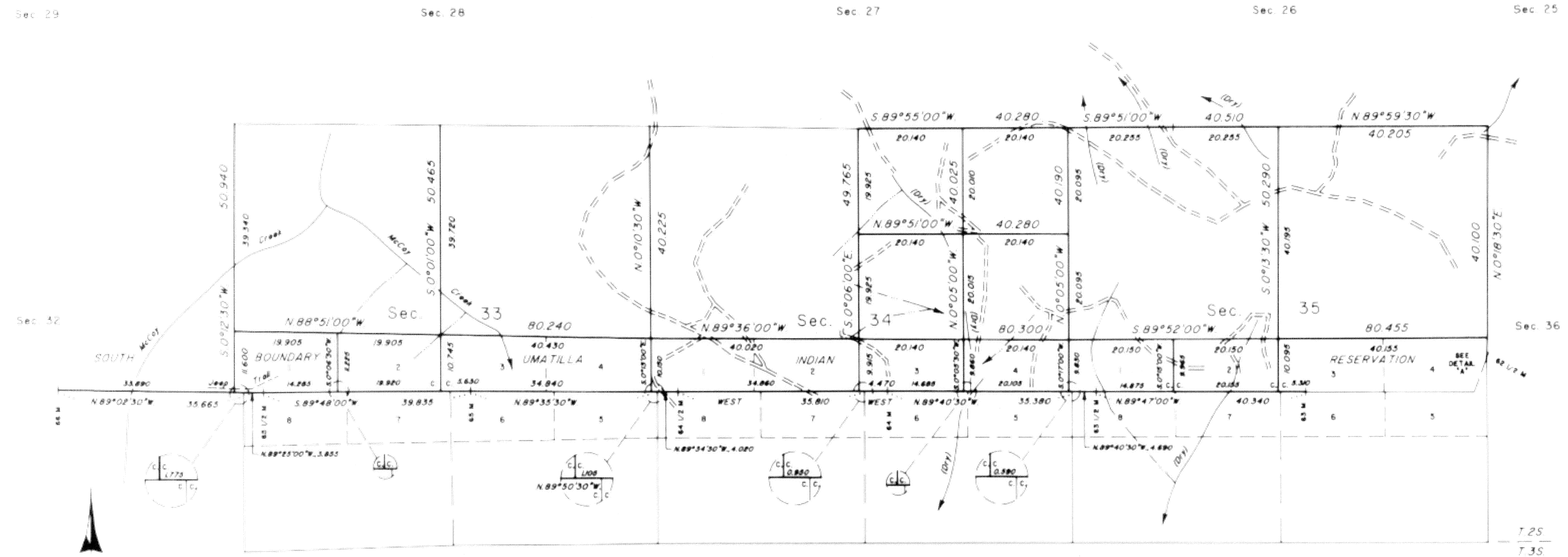
NOTE:

This map was performed by the Bureau of Land Management, and is being filed at the request of the Union County Surveyor. Within Union County survey records, it bears the designation of survey number 011-2013. Associated field notes are filed separately in the Union County Monumentation records.

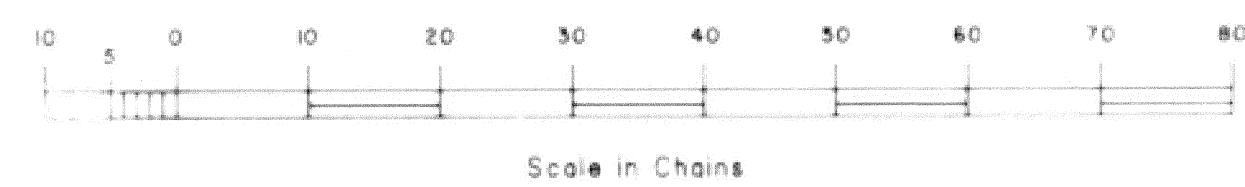
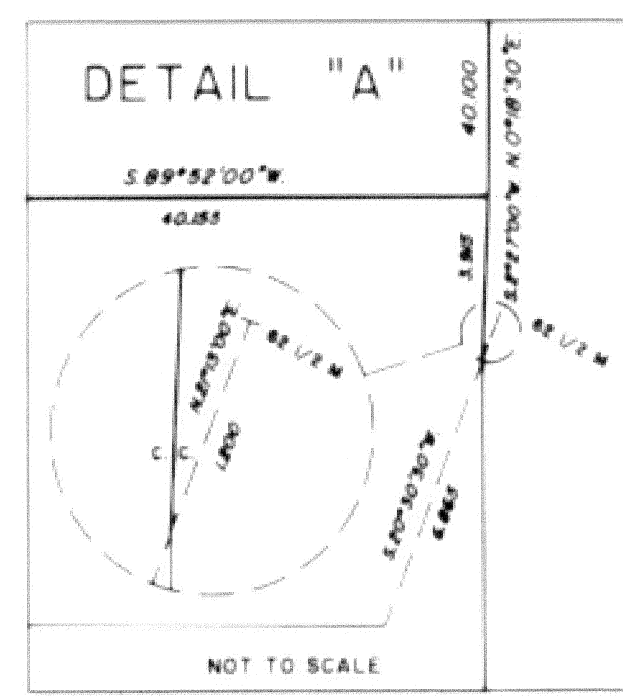
UNION COUNTY SURVEYOR
Date Received 3/5/13
Date Filed 3/5/13
By [Signature]
File No. 011-2013



DEPENDENT RESURVEY AND SUBDIVISION OF SECTIONS



Mean magnetic declination 9° East



NOTE:
This map was performed by the Bureau of Land Management, and is being filed at the request of the Union County Surveyor. Within Union County survey records, it bears the designation of survey number 011-2013. Associated field notes are filed separately in the Union County Monumentation records.

UNION COUNTY SURVEYOR
Date Received 3/5/13
Date Filed 3/5/13
By [Signature]
File No. 011-2013

UNITED STATES DEPARTMENT OF THE INTERIOR
BUREAU OF LAND MANAGEMENT

Portland, Oregon March 8, 1999

This plat is strictly conformable to the approved field notes, and the survey, having been correctly executed in accordance with the requirements of law and the regulations of this Bureau, is hereby accepted.

For the Director
[Signature]
Chief Cadastral Surveyor of Oregon