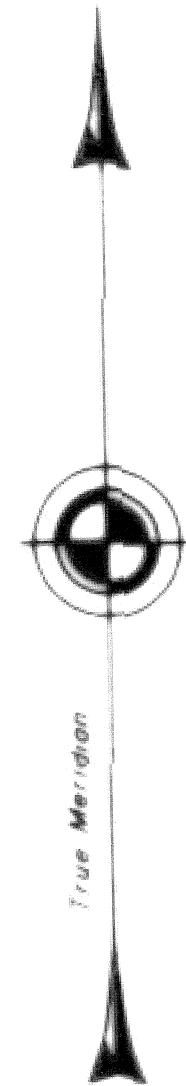
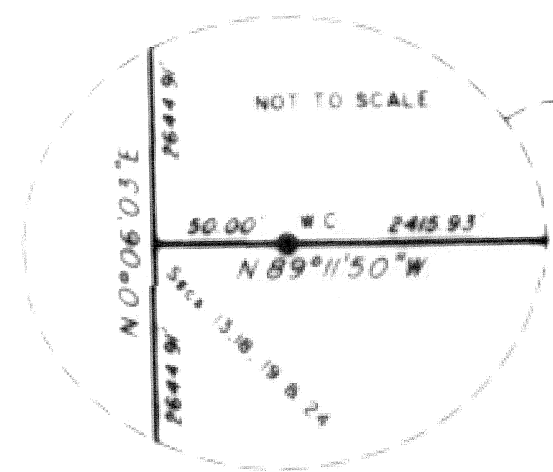


TOWNSHIP 4 SOUTH, RANGE 35 EAST, OF THE WILLAMETTE MERIDIAN, OREGON

DEPENDENT RESURVEY, SUBDIVISION OF SECTION, AND SURVEY



Mean magnetic declination 20° East

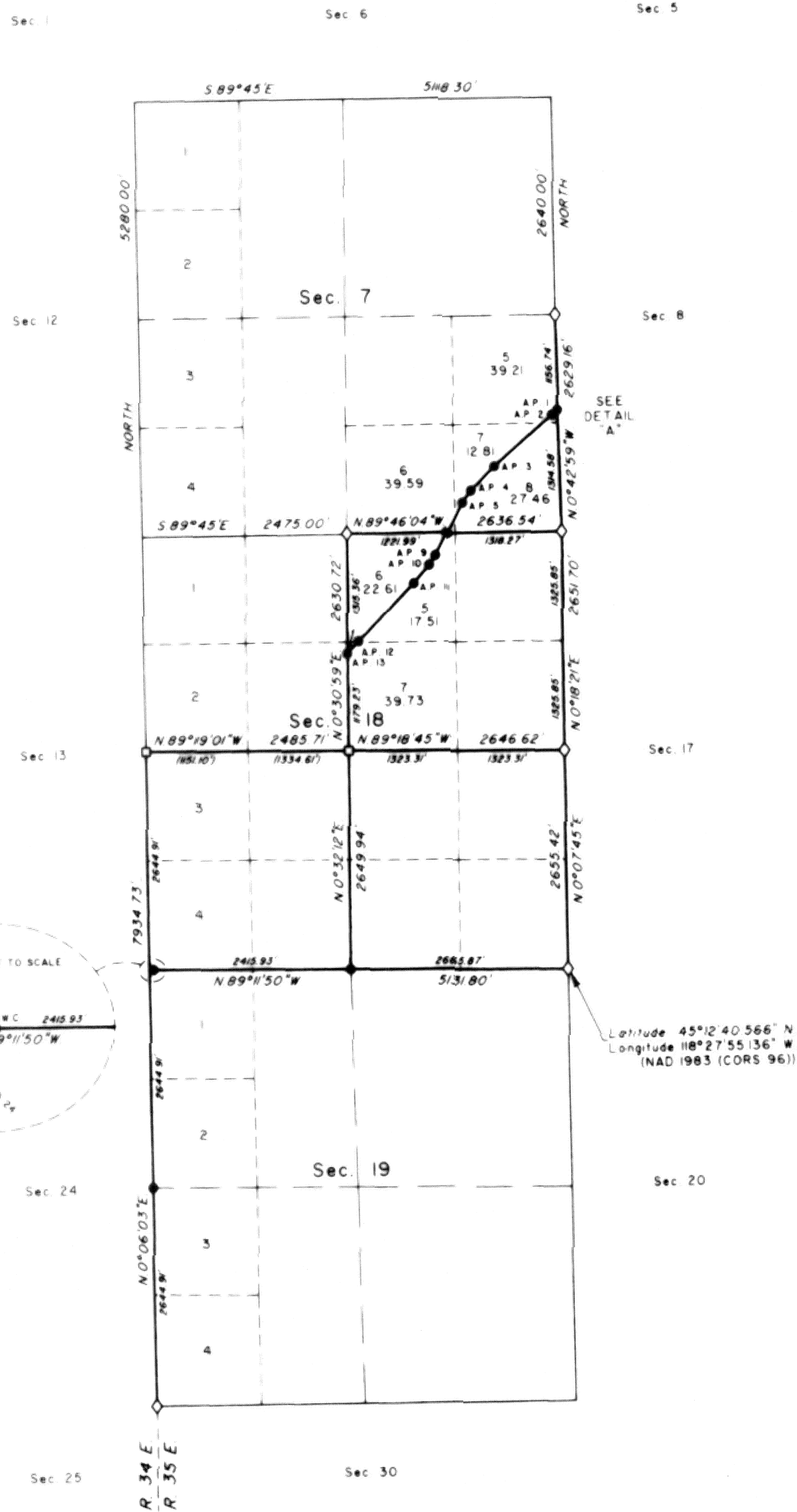


NOTE:

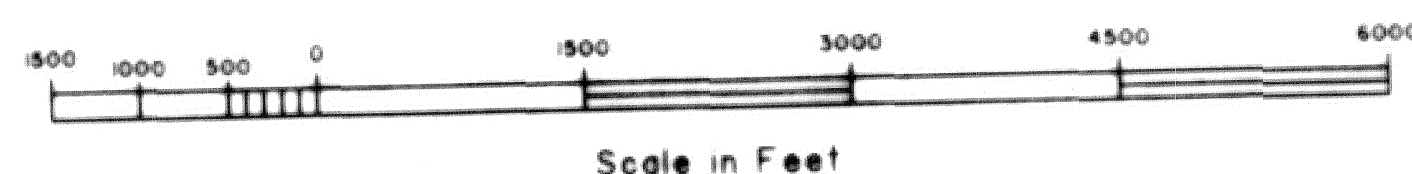
This map was performed by the Bureau of Land Management, and is being filed at the request of the Union County Surveyor. Within Union County survey records, it bears the designation of survey number 010-2013. Associated field notes are filed separately in the Union County Monumentation records.

UNION COUNTY SURVEYOR	
Date Received	3/5/13
Date Filed	3/5/13
By	J. G. DEPT
File No.	010-2013

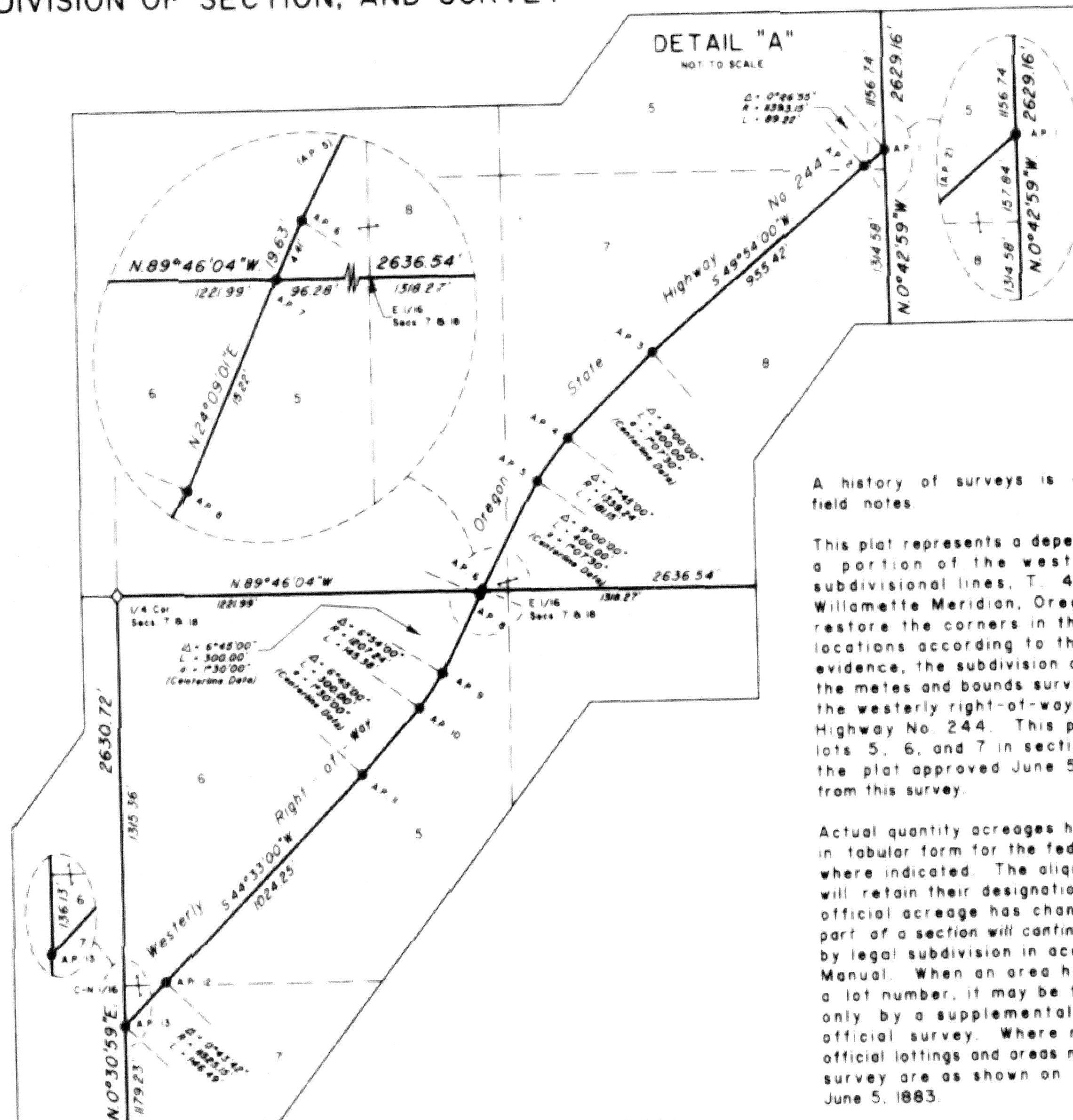
B C W



Latitude 45° 12' 40.566" N
Longitude 118° 27' 55.136" W
(NAD 1983 (CORRS 96))



Scale in Feet



LEGAL SUBDIVISION	OFFICIAL AREA
SECTION 18	
NE 1/4 NE 1/4	40.08 Acres
SE 1/4 NE 1/4	40.16 Acres
NE 1/4 SE 1/4	40.38 Acres
SE 1/4 SE 1/4	40.53 Acres
SW 1/4 SE 1/4	40.49 Acres
NW 1/4 SE 1/4	40.34 Acres
NE 1/4 SW 1/4	40.56 Acres
SE 1/4 SW 1/4	40.54 Acres
LOT 4	34.55 Acres
LOT 3	34.82 Acres

LEGEND	
◊	Original corner previously remonumented
□	Corner previously established or reestablished
●	Corner established or reestablished this survey

A history of surveys is contained in the field notes.

This plat represents a dependent resurvey of a portion of the west boundary and subdivisional lines, T. 4 S., R. 35 E., Willamette Meridian, Oregon, designed to restore the corners in their true original locations according to the best available evidence, the subdivision of section 18, and the metes and bounds survey of a portion of the westerly right-of-way of Oregon State Highway No. 244. This plat also creates lots 5, 6, and 7 in section 7, based upon the plat approved June 5, 1883, and data from this survey.

Actual quantity acreages have been returned in tabular form for the federal interest lands where indicated. The aliquot parts and lots will retain their designation even though the official acreage has changed. The aliquot part of a section will continue to be subdivided by legal subdivision in accordance with the Manual. When an area has been assigned a lot number, it may be further subdivided only by a supplemental plat or another official survey. Where not indicated, the official lottings and areas not affected by this survey are as shown on the plat approved June 5, 1883.

The survey was executed by Richard S. Kaiser, Cadastral Surveyor, beginning June 8, 2005, and completed May 24, 2006, pursuant to Special Instructions dated June 3, 2005, under Group Number 2121, Oregon.

UNITED STATES DEPARTMENT OF THE INTERIOR
BUREAU OF LAND MANAGEMENT

Portland, Oregon June 20, 2006

This plat is strictly conformable to the approved field notes, and the survey, having been correctly executed in accordance with the requirements of law and the regulations of this Bureau, is hereby accepted.

For the Director

John P. Damowitz, Acting

Chief Cadastral Surveyor of Oregon