

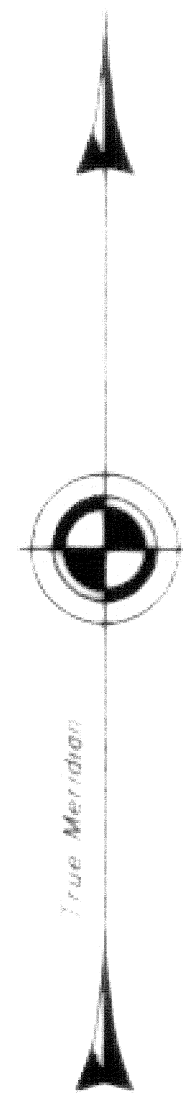
# TOWNSHIP 3 SOUTH, RANGE 41 EAST, OF THE WILLAMETTE MERIDIAN, OREGON

## DEPENDENT RESURVEY AND SUBDIVISION OF SECTION 32

Sec. 30

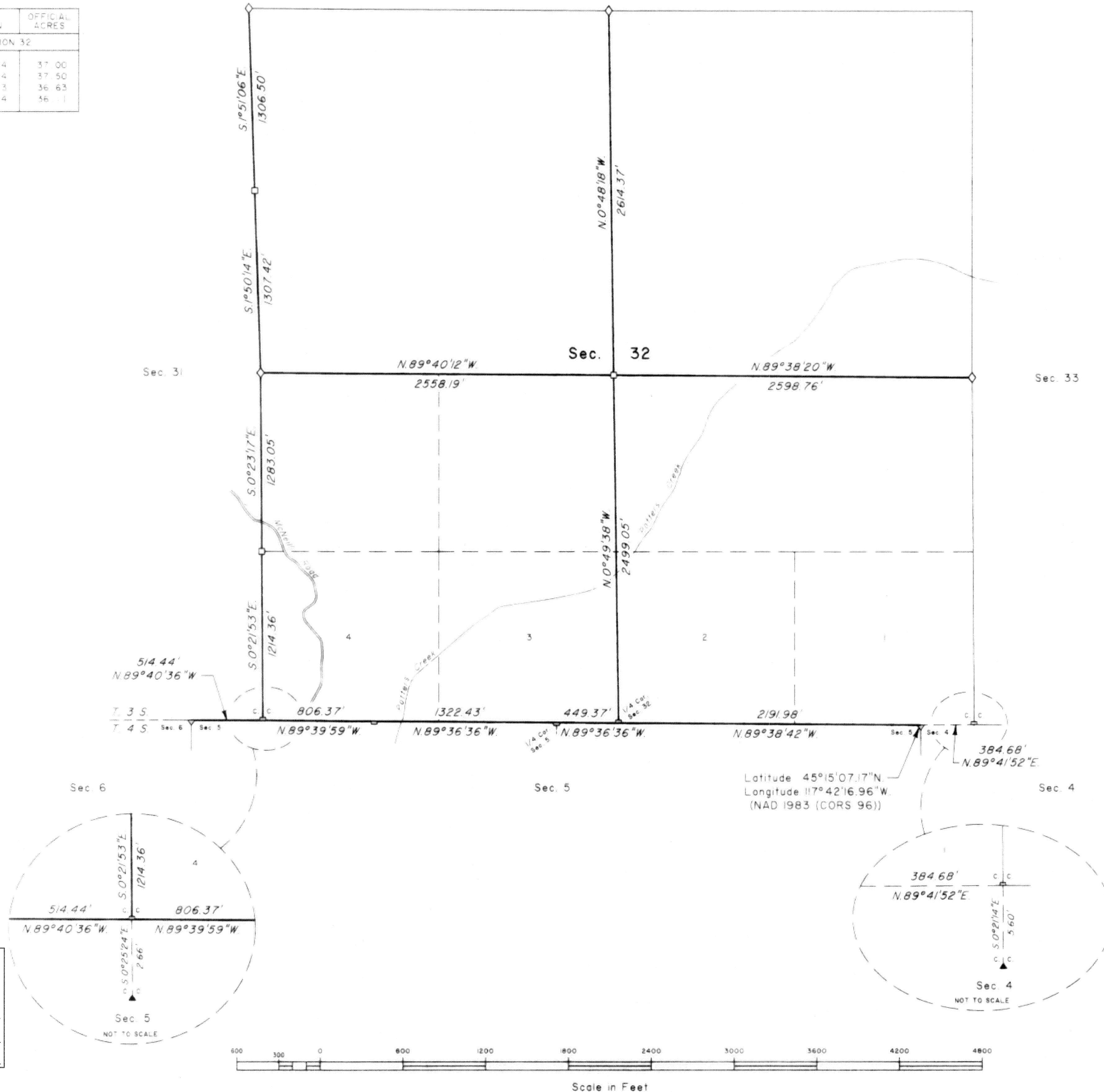
Sec. 29

LEGAL SUBDIVISION	OFFICIAL ACRES
SECTION 32	
NE 1/4 SW 1/4	37.00
NW 1/4 SW 1/4	37.50
LOT 3	36.63
LOT 4	36.11



**NOTE:**  
This map was performed by the Bureau of Land Management, and is being filed at the request of the Union County Surveyor. Within Union County survey records, it bears the designation of survey number 009-2013. Associated field notes are filed separately in the Union County Monumentation records.

UNION COUNTY SURVEYOR  
Date Received 2/15/13  
Date Filed 3/15/13  
By [Signature] DEPUTY  
File No. 009-2013



A history of surveys is contained in the field notes.

This plat represents a dependent resurvey of a portion of the north boundary, T. 3 S., R. 41 E., Willamette Meridian, Oregon, and the dependent resurvey of a portion of the subdivision lines, T. 3 S., R. 41 E., Willamette Meridian, Oregon, designed to restore the corners in their true original locations according to the best available evidence, and the subdivision of section 32.

The survey was executed by F. David Radford, Cadastral Surveyor, beginning July 17, 2008, and completed August 11, 2008, pursuant to Special Instructions dated July 17, 2008, under Group Number 2233, Oregon.

Measured distances and directions have been adjusted by computer software that incorporates a least squares adjustment routine. The adjusted bearings and distances are reported to the nearest second and 0.01 foot.

Actual quantity acreages have been returned for federal interest lands where indicated. The aliquot parts and lots will retain their designation even though the official acreage has changed. The aliquot part of a section will continue to be subdivided by legal subdivision in accordance with the Manual. When an area has been assigned a lot number, it may be further subdivided only by a supplemental plat or another official survey.

The official lottings and areas of federal interest lands not affected by this survey are as shown on the plat approved June 28, 1899.

### LEGEND

- ◇ Original corner previously remonumented
- ◆ Original corner remonumented this survey
- Corner previously established or reestablished

UNITED STATES DEPARTMENT OF THE INTERIOR  
BUREAU OF LAND MANAGEMENT

Portland, Oregon

This plat is strictly conformable to the approved field notes, and the survey, having been correctly executed in accordance with the requirements of law and the regulations of this Bureau, is hereby accepted.

For the Director

*Mary J. M. Heath*

Chief Cadastral Surveyor of Oregon

January 15, 2010  
Date

SURVEY NUMBER 009-2013