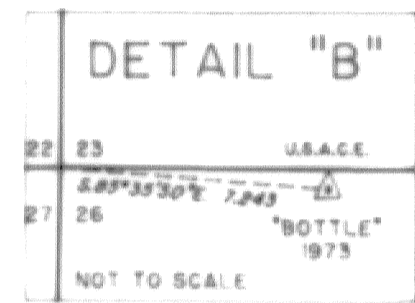
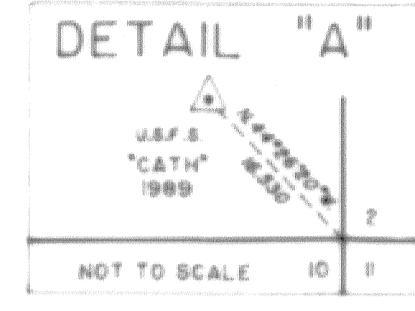
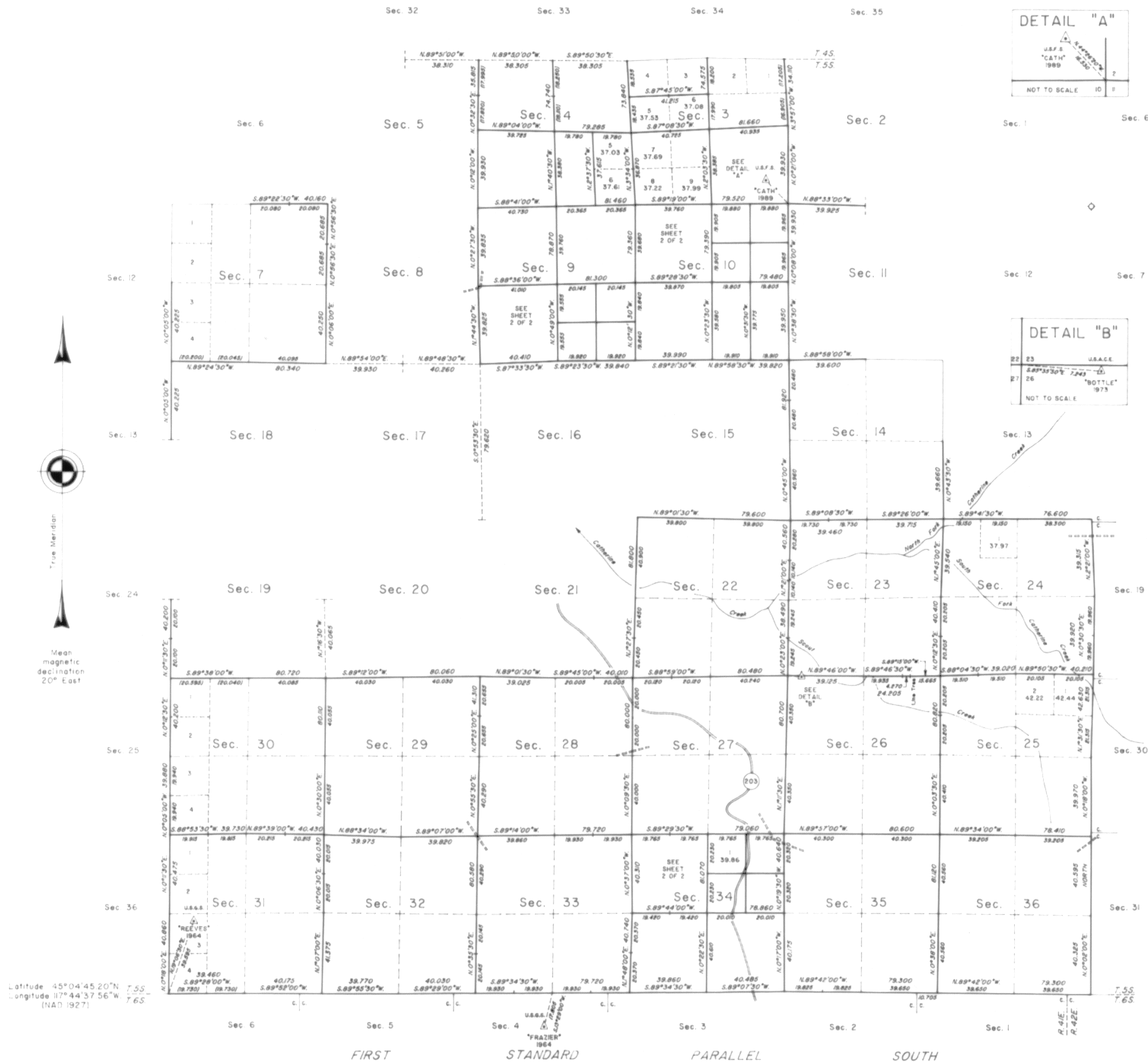


TOWNSHIP 5 SOUTH, RANGE 41 EAST, OF THE WILLAMETTE MERIDIAN, OREGON

SHEET 1 OF 2

DEPENDENT RESURVEY, SUBDIVISION OF SECTIONS, SURVEY AND REMONUMENTATION



A history of surveys is contained in the field notes.

This plat represents a dependent resurvey of the south boundary (First Standard Parallel South), portions of the east and west boundaries and subdivision lines, T. 5 S., R. 41 E., Willamette Meridian, Oregon, designed to restore the corners in their true original locations according to the best available evidence, the subdivision of sections 3, 4, 9, 10 and 34, metes-and-bounds survey in section 34, and the remonumentation of an original corner point.

Except as shown hereon, the lottings and areas are as shown on the plat approved November 8, 1879.

The survey was executed by Philip G. Griffin, Cadastral Surveyor, beginning July 9, 1990, and completed April 13, 1992, pursuant to Special Instructions dated July 13, 1979, for Group Number 1000, Oregon, and Special Instructions dated June 26, 1990, and Supplemental Special Instructions dated May 14, 1991, under Group Number 1484, Oregon.

Timber in this area consists of fir, pine and larch.

◊ Corner remonumented.

UNITED STATES DEPARTMENT OF THE INTERIOR
BUREAU OF LAND MANAGEMENT

Portland, Oregon April 16, 1993

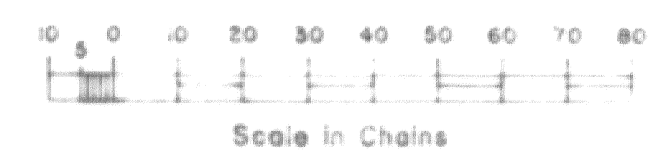
This plat is strictly conformable to the approved field notes, and the survey, having been correctly executed in accordance with the requirements of law and the regulations of this Bureau, is hereby accepted.

For the Director
Wayne M. Gardner
Chief Cadastral Surveyor of Oregon

NOTE:
This map was performed by the Bureau of Land Management, and is being filed at the request of the Union County Surveyor. Within Union County survey records, it bears the designation of survey number 008-2013. Associated field notes are filed separately in the Union County Monumentation records.

UNION COUNTY SURVEYOR
Date Received 3/5/13
Date Filed 3/5/13
By *[Signature]*
File No. 008-2013

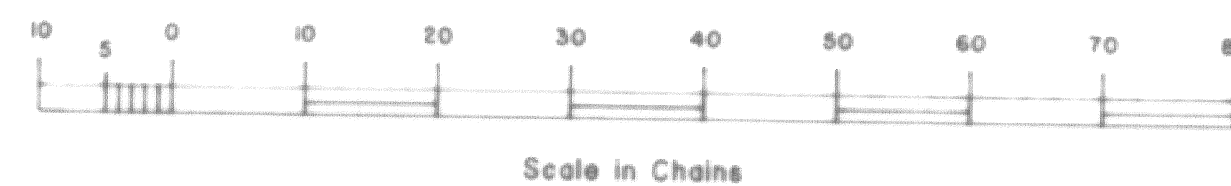
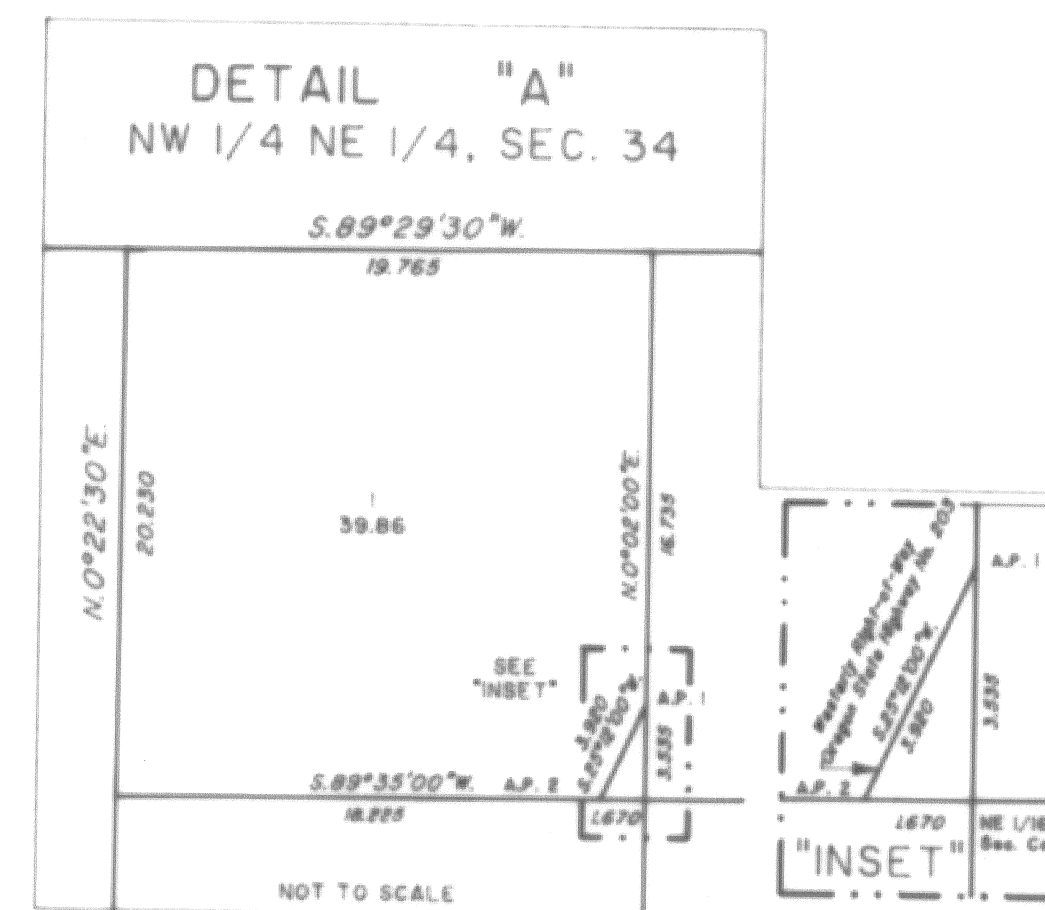
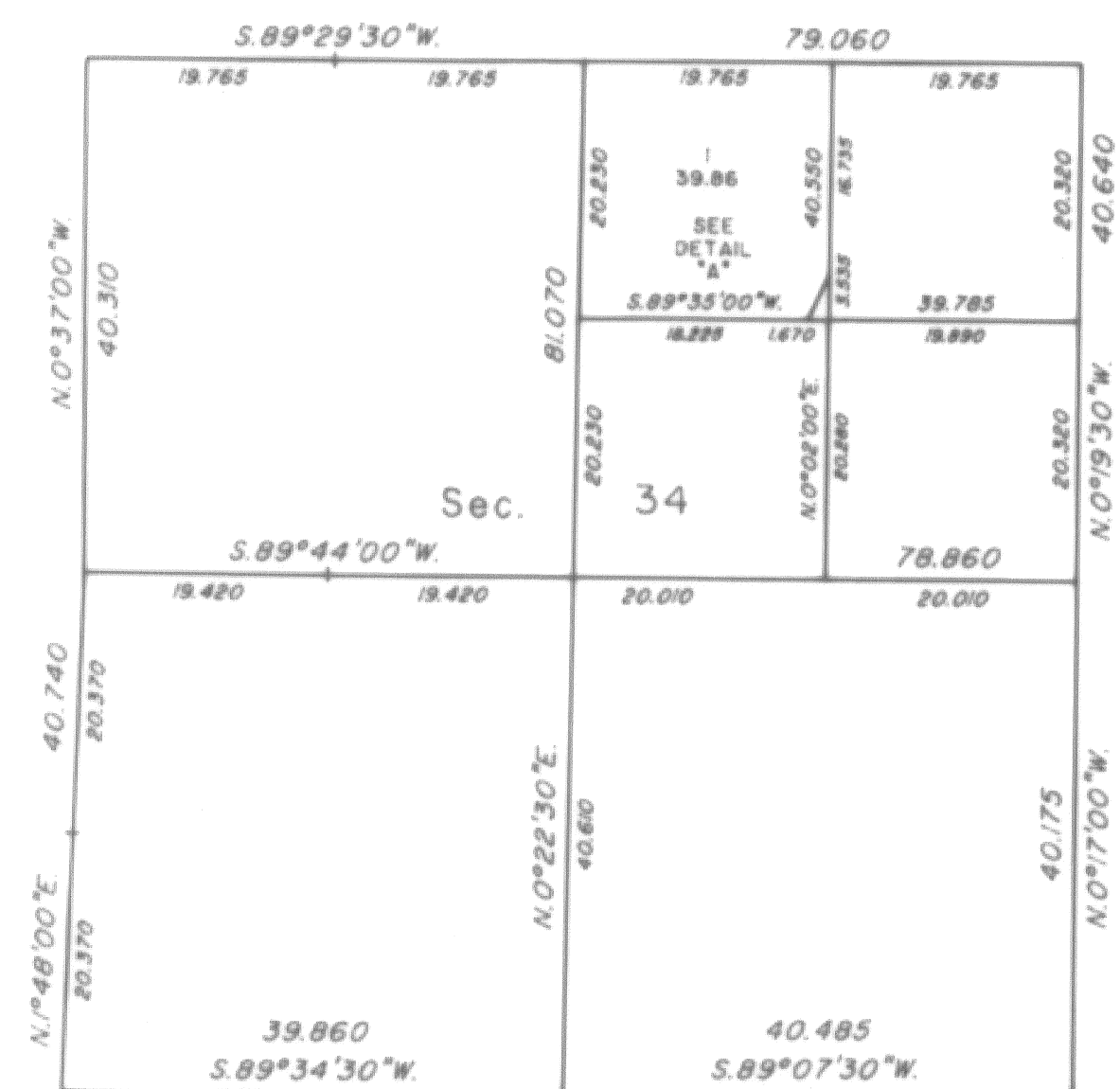
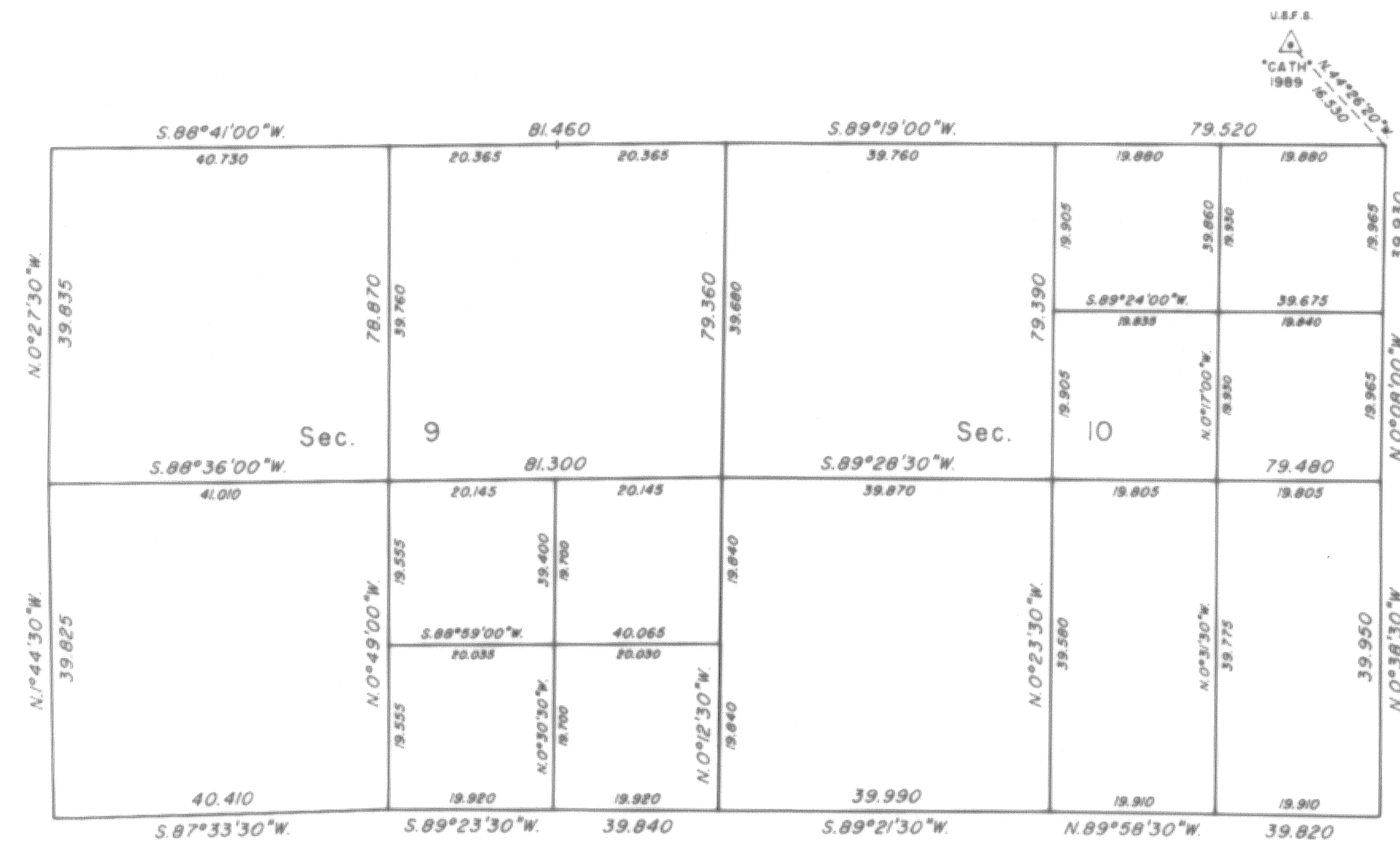
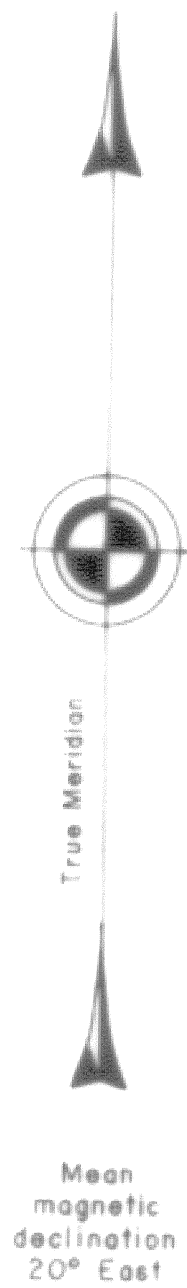
Latitude 45° 04' 45.20" N 7.55
Longitude 117° 44' 37.56" W 7.65
(NAD 1927)



TOWNSHIP 5 SOUTH, RANGE 41 EAST, OF THE WILLAMETTE MERIDIAN, OREGON

SHEET 2 OF 2

DEPENDENT RESURVEY, SUBDIVISION OF SECTIONS, SURVEY AND REMONUMENTATION



NOTE:

This map was performed by the Bureau of Land Management, and is being filed at the request of the Union County Surveyor. Within Union County survey records, it bears the designation of survey number 008-2013. Associated field notes are filed separately in the Union County Monumentation records.

UNION COUNTY SURVEYOR	
Date Received	3/5/13
Date Filed	3/5/13
By	<i>Neil G. Gorman</i>
File No.	008-2013

UNITED STATES DEPARTMENT OF THE INTERIOR
BUREAU OF LAND MANAGEMENT

Portland, Oregon April 16, 1993

This plat is strictly conformable to the approved field notes, and the survey, having been correctly executed in accordance with the requirements of law and the regulations of this Bureau, is hereby accepted.

For the Director

Wayne M. Gardner
Chief Cadastral Surveyor of Oregon