

# RETRACEMENT and SUBDIVISION of SECTION 36 T. 2 S., R. 37 E., W.M.

## BASIS OF BEARING AND COORDINATES

The bearings for this survey are grid bearings based on coordinates from Oregon Coordinate Reference System; Pendleton-La Grande zone. Horizontal datum is NAD83 (CORS 96, Epoch 2002). Reference ellipsoid is WGS84. All linear values are expressed in International feet unless noted. Average convergence angle in this survey is: 0° 07'55" positive, from grid North to geodetic North.

The OCRS Pendleton-La Grande Zone is defined as follows: Transverse Mercator Projection, North American Datum of 1983. Latitude of grid origin: 45°05'00" N; Central meridian: 118°20'00" W; False northing: 0.000 m; False easting: 30000.000 m; Central meridian scale: 1.000175 (exact). Further information is available at: <http://www.oregon.gov/ODOT/HWY/GEOMETRONICS>

Primary geodetic control is from Survey No. 26-2011, control survey for Oregon Department of Transportation. Lines have been measured with static GPS or redundant observations with real time kinematic GPS using a Leica 1200 GPS system, antenna model AX1202; then converting to grid coordinates as defined above. Some lines were measured with a Leica 1200 total station using conventional methods and redundant observations.

## LEGEND

- FOUND MONUMENT NOTED IN TABLE
- ⊠ FOUND CORNER McLELLAN 1920
- SET CADASTRAL CORNER
- ⑩ DENOTES MONUMENT SEE TABLE FOR DETAILS
- ( ) RECORD DATA GLO
- [ ] RECORD DATA PER DARLEY, 1913
- < > RECORD DATA PER McLELLAN, 1920
- SFNF SEARCHED FOR NOT FOUND
- (NO. ---) RECORD DATA FOR SURVEY AS NOTED
- TRACT LINE FROM McLELLAN SURVEY
- ..... LINE SHOWN FOR INFORMATION ONLY

Found boulder 3' x 2.5' x 2' high with scribed X on top and NE bearing tree.  
(No. 33-1989 S88°21'42"W 2804.73')  
(S89°28'W 40.43 ch.)  
(S88°15'57"W 2793.91')

Found stone mound recovered in Survey No. 33-1989

Found iron post with brass cap, set from found original evidence

## NARRATIVE

This survey was performed at the request of the Oregon Department of Transportation for the purpose of establishing the boundaries for Oro Dell Quarry and further state property boundaries, including rights of way, lying in the southeast quarter of Section 36. To establish the necessary boundaries required the subdivision of Section 36. Also shown hereon are the remaining network points shown on a previous plat filed as County Survey No. 047-2002. All other points from said survey were destroyed by bridge construction. New network points have been established and are shown hereon with positions on all points using the new coordinate system as defined hereon.

**History of Township 2 South, Range 37 East W.M.**  
The east line was originally surveyed by Timothy W. Davenport under contract No. 102, dated July 20, 1863. This survey set the southeast corner of the township. The south line was originally surveyed by William H. Odell under joint contract with Joseph G. Gray, No. 120, dated May 27, 1867. The first partial subdivision was originally surveyed by John A. Hurlburt under contract No. 201, approved Nov. 13, 1874. This survey subdivided the southern tier of sections and two more sections north along the east line of the township. The original subdivision of the township was completed by Henry Meldrum under contract No. 450, approved May 19, 1883.

**Subsequent Surveys**  
In the Old Survey Volume, Union County survey records, there are three main surveys related to the retracement and subdivision of Section 36. J. W. Kimbrell, County Surveyor, surveyed and subdivided Section 35 in 1890, and retraced a portion of the township line. C. T. Darley, County Surveyor, performed a subdivision of Section 36 in 1913. D. J. McLellan, County Surveyor, surveyed 3 tracts along the east-west centerline of Section 36 and extending west into Section 35 along the east-west centerline of said section, circa 1920.

**Retracement of Township line between Townships 2 and 3 South**  
The first line retraced was the south line of the township which lies on the top of steep breaks on the south side of the Grande Ronde River. The southeast corner of the township has been continuously extant in the record but the nearest extant corner to the west was 4 miles, restored by William L. Baierski in his survey for Hilgard State Park in 2002. He did not find the original corner but accepted a very large mound of stones, an apparent rock jack fence corner, that fit well with a proportioned solution. Odell describes the roughness of the country in his notes and gives very few topographic calls. After retracing the entire four miles of line and having no success, and having very few calls of record, improvements or other collateral evidence to help retracement, I looked to Hurlburt's surveys to the north for additional evidence.

In Hurlburt's notes, starting at the southeast corner of the township, he retraces the east line of the township for one mile, for the purpose of checking his compass and the chaining of his crew. His notes state that he finds the quarter-section corner eight links in excess of distance and the section corner 22 links in excess distance and eight minutes in bearing (twelve links west). He returns to the southeast corner and retraces west along the south line for the same purpose. His notes state that he retraces west 40 chains and can not find the quarter-section corner and runs west into the section corner with 86 links excess in distance and 40 minutes in bearing (92 links south). He gives no other notes on the retracement other than identifying each corner on the township line as the original corner. (Continued on Sheet 2)

Found 2" o.d. iron pipe, of unknown origin, corner of local control. Shown on OSHD Dwg. No. 2B-16-6 as 2" IP and mound of stones, also on OSHD Dwg. Nos. IR-1-760, IR-1-908 and IR-3-234. Shown on Survey Nos. 59-1974, 67-1976 and 40-1980.

Found iron post with brass cap Survey No. 049-2002 (West 160 ch.)  
(S89°38'9"E 10673.66')

Found stone mound (remonumented) is 13.5' North of line between extant corners and 71.5' West of proportioned distance.  
(West 80 ch.)  
(S89°29'33"E 5408.38')

Very old rock jack fence corner at top of steep bluff, accepted as position of corner 3, Tract C; held as terminus in broken boundary.

Area has been logged and search position is at site of old landing

Corner restored by found evidence using grant boundary adjustment procedure

Corner set by intersection of section centerlines

Found stone mound Tract A, corner 2; Tract A Tract B, corner 5; held as pivot point in broken boundary.

Corner restored by proportionate measurement (West 40 ch.)

Corner restored by proportionate measurement (West 40 ch.)

## CADASTRAL MONUMENT TABLE

No.	GRID NORTHING	GRID EASTING	DESC
①	93742.24	154187.39	FOUND
②	93766.19	151483.31	SET
③	93790.14	148779.22	SET
④	93838.05	143371.06	SET
⑤	93905.87	132697.61	FOUND
⑥	96503.52	143347.93	FOUND
⑦	99118.51	143389.66	FOUND
⑧	99203.06	146182.29	FOUND
⑨	101806.27	148812.60	FOUND
⑩	96557.40	148801.23	SET
⑪	96464.10	151499.13	SET
⑫	99120.47	151514.71	FOUND
⑬	99096.28	154114.26	FOUND
⑭	96372.29	154153.93	FOUND

SEE SHEET 2 FOR DETAILS

## REFERENCES

- Original GLO Survey Notes and Plats for T.2&3S., R.37E., W.M.: T.W. Davenport, Contract No. 102, 1863; Odell and Gray, Contract No. 120, 1867; John A. Hurlburt, Contract No. 201, 1873
- Union Co. Old Survey Volume P. 105, by J.W. Kimbrell, 1890
- Union Co. Old Survey Volume P. 353, by C.T. Darley, 1913
- Union Co. Old Survey Volume P. 366, by D.J. McLellan, circa 1920.
- Union County Survey Number: 65-1972, Voelz; 17-1973, Griffith; 59-1974, Brozeau; 67-1976, Voelz; 40-1980, Perry; 06-1982, Hollingsworth; 33-1989, Hanley; 19-1990, Blackman; 27-1993, Griffith; 05-2000, Ferguson; 18-2001, Robinson; 07-2002, Butler; 47-2002, Butler; 49-2002, Baierski; 26-2011, Brinton
- "Forgotten Golf Course" by Dick Mason, article in the La Grande Observer, Sept. 3, 2004
- Reprint of old photograph of La Grande Country Club from Union County Historical Society, dated Feb. 1922

- Oregon State Highway Department Drawing: No. 7C-1-10, 1920; No. 2B-16-6, 1922; No. IR-1-760, 1929; No. IR-1-908, 1929; No. IR-3-234, 1931; No. 8B-6-10, 1957; No. 8B-6-11, 1957; No. 8B-7-1, 1957; No. 8B-23-18, 1961; No. 8B-34-13, 1965; No. 8B-36-3, 1966; No. 10B-17-30, 2003
- Oregon Washington Railroad and Navigation Company, Mainline Umatilla to La Grande: ROW and Track Mainline Map No. V.ORE. 4 - 71, 1918, revised 1927; ROW and Track Mainline Map No. V.ORE. 4 - 72, 1918, revised 1927; ROW and Track Mainline Map No. V.ORE. 4 - 73, 1918, revised 1927.
- O.W.R.R.&N. Co. and U.P.R.R. Co. (Lessee) Agreement 99, with State of Oregon and Union Co., for modification of trestle approach, dated Oct. 10, 1921 (references Hwy. Dwg. 2B-16-6 and 7C-1-10); Agreement 495, supercedes Agreement 99, dated Feb. 16, 1959 (see Exhibit "A" right of way map); Agreement 1049, with State of Oregon for acquisition of ROW, Deed 97902, dated Dec. 9, 1980 (See map dated April 2, 1979 Office of Chief Engineer, Omaha, Nebraska); ODOT ROW File 7042, acquisition from Railroad by quit claim; Deed 2004172, Upper Quarry Bridge reconstruction.

**UNION COUNTY SURVEYOR**

Date Received 2/13/13

Date Filed 2/14/13

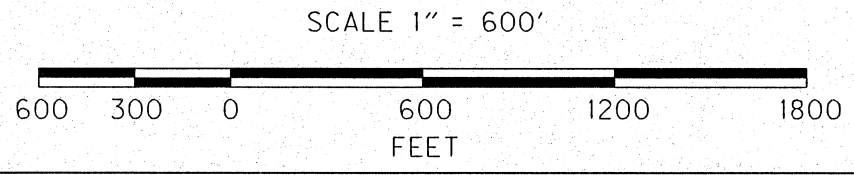
By M.H.G. Min

File No. 003-2013

REGISTERED PROFESSIONAL LAND SURVEYOR

OREGON  
JULY 13, 1999  
PETER C. ELDER  
51277

RENEWS: 12/31/2013



**OREGON DEPARTMENT OF TRANSPORTATION**  
RETRACEMENT AND QUARRY MONUMENTATION  
SECTION 36, T.2S., R.37E., W.M., and ORO DELL QUARRY  
184 - OLD OREGON TRAIL HIGHWAY  
UNION COUNTY

FOR ODOT REGION 5 April 16, 2012 to Feb. 13, 2013  
3012 ISLAND AVE. SCALE: 1 IN. = 600 FT.  
LA GRANDE, OR 97850 SHEET 1 OF 3



# RETRACEMENT and SUBDIVISION of SECTION 36, NARRATIVE (CONT.) AND MONUMENT DETAIL

T. 2 S., R. 37 E., W.M.

## NARRATIVE continued from Sheet 1

In contrast to the township line retracement, the record shows that many corners from Hurlburt's subdivision survey have been recovered through the years. Hurlburt also gives clear and numerous calls to recognizable topographic features. I retraced his line north between Secs. 34 and 35 to the recovered quarter-section corner and section corner of record. Using the ties to Hurlburt's corners to the north brought me to the original corner for Sections 2, 3, 34 and 35; a mound of stone two and one half feet in diameter, at the rear of a rock outcrop where it joins the steep slope, midway on the west side of Wilson Canyon. A diligent search was conducted for the three intervening corners to the east with no success. The necessary corners to complete the survey along the township line are considered lost and restored by proportionate means hereon.

### The West quarter-section corner of Section 36

There is no evidence of the original corner monument or accessories, however, a substantial amount of acceptable collateral evidence was found. The amount of evidence found for this corner being substantial, and finding that the standard method places the corner in a position that does not harmonize with the best available evidence; I find the corner obliterated and not lost and use a secondary method from the BLM Manual of Surveying Instructions to place and restore the corner. The found evidence from sources described below forms a locus of positions. I use the grant boundary adjustment procedure, applied to the survey cited hereon by McLellan, as an equitable way to distribute the differences between the returned measurements and the record courses and retain the original form of said survey. This solution gives a quarter-section corner position that falls near the center of the locus of all the evidence.

The evidence includes topo calls by Hurlburt, the matching retraced bearing across the section by Darley, three found corners from McLellan's survey along with closely matching record calls to the northerly ROW line of the railroad, substantially unchanged since the original grade was built. Also, a natural boundary at the top of the steep bluffs above the railroad, where large stones were cleared for the old golf course, is found to clearly fit as the line between corners 3 & 4, Tract C, and is in agreement with the intent of the survey to include only that part of the NW 1/4 of the SE 1/4 of Sec. 35 desired for the golf course. Other evidence found are improvements including the remains of two paved "greens" or playing surfaces, in agreement with the intent of the 1920 survey to retain the southwest green (Tract C) and for the purchase of more land around the green in the northwesterly portion of the golf course (Tract B).

### Hurlburt survey north between Sections 35 and 36

GLO Surveyor Hurlburt's notes indicate that the South quarter-section corner of Sec. 36 had been lost soon after the original survey. Hurlburt's retracement notes indicate that the southwest corner of Sec. 36 was off line and to the north. Hurlburt's first topo call north between Secs. 35 and 36 to top of bluff also indicates the corner was north of line and the bluff here is distinct. Hurlburt also called the right (south) bank of the Grande Ronde River and the stage road (the trace of the stage road found lying above the railroad), both calls fitting within the locus of collateral evidence.

### Darley survey subdividing Section 36

Darley's plat shows the use of the standard method applied correctly. He shows that the southeast and southwest corners, and the north, east and west quarter-section corners, are extant. The south quarter-section corner is restored by proportionate measurement. The plat shows an angle of 92 degrees and zero minutes between the east line of the southeast quarter and the east-west centerline of the section. This agrees with the calls from Hurlburt and places the corner further north than the record. Retracing and laying out the record bearing and distance fits with the locus of evidence for the west quarter-section corner. Darley set the center quarter-section corner in this survey and a diligent search failed to find the marked stone.

### McLellan survey for the La Grande Country Club

McLellan surveyed three tracts in his survey circa 1920. Two tracts, Tract "A" and "B" were for a land exchange between the La Grande Country Club and J.D. McKinnon. McKinnon received Tract A on the east side of the golf course, along and south of the east-west centerline of Section 36. He gave up land in Tract "B" lying along and north of said centerline, and also along and north of the east-west centerline of Section 35. Tract "C" of the survey delineated land that the Country Club retained on the west side of the golf course upon sale of the SW 1/4 of the NE 1/4 and the NW 1/4 of the SE 1/4, all in Section 35. The west quarter-section corner of Sec. 36 and the center-east 1/16 corner of Section 35 are shown on the plat as extant.

### Retracement of McLellan's survey

I first retraced McLellan's survey using the proportioned position for the west quarter-section corner of Section 36 as an initial point. Using this position I retraced the courses and laid out the record corners.

In the retracement of Tract "A" I found that a fence corner, with wire fence running south and west, fit closely to the NW corner of Tract "A" but seemed to be too far north. However the north-south part of the fence fit well for the west line of the tract. This fence runs south about 300 ft. then angles southeasterly, becoming perpendicular to the railroad which is in a southwest to northeast tangent here. I recognized this part of the fence configuration from OSHD Drawing 8B-6-11 dated 1957. This fence was part of a corral still existing north of the railroad. I then find an imbedded stone mound, with opening at center large enough for a wood stake, lying 38 ft. northeasterly of said fence corner. I took this to be the corner of Tract "B" lying 75 feet north of the northwest corner to Tract "A". I then retraced west on Tract "B" and further west on Tract "C".

In the retracement of Tract "C" I found that the calculated record south line (running southeasterly) is positioned on a steep cliff below the top of a bluff and about halfway down the slope to the railroad. The 1/16 corner position fell at the top of the bluff. I then find the remains of a bituminous paved "green" or playing surface 135 ft. northwesterly of the 1/16 corner position out on the flat area.

Returning to Tract "A" I run the record call to the northerly ROW line of the railroad (also the south line of the tract) and recognize that it fits the found stone mound as the NW corner of the tract. The corner I used as an initial quarter-section corner was apparently too far south. I then run east from the found stone mound and find traces of an old fence on line, no wire, and find a second stone mound on the slope that fit the record for the NE corner of the tract. Running south I found traces of an old fence on line but no wire. This line also fits record distance to the northerly ROW line of the railroad.

Returning to Tract "C" I find a very large and ancient rock jack fence corner at the west end of the flat and on the edge of the steep bluff with a fence running northwesterly along the flat and southeasterly along the bluff. Also along the edge of the bluff is a line of large stones that have been cleared from the flat. Many of these stones are much too large to have been moved by hand. I recognize the line of the bluff as a natural monument of the survey as it agrees with the intent of the survey for the land being retained in Sec. 35. I accept the rock jack as corner three of Tract "C".

### Grant boundary adjustment solution

A solution using the grant boundary adjustment procedure from the BLM manual was calculated. Holding the found stone mound at the NW corner of Tract "A" and the accepted rock jack at corner 3 of Tract "C" and inverting, I find that the measured distance is 44.23 ft. shorter than the record and that the angle is 2°12'34" different than the record angle and is a positive rotation. The adjusted bearing agrees closely with the Darley survey putting the east-west centerline of the section on a northwest-southeast bearing. The grant boundary adjustment was then calculated for all lines. The calculated quarter-section corner position falls near the center of the locus of evidence. This solution also produces a best fit line through both the found stone mound corners to the east and the accepted rock jack corner on the west. As stated above, the standard method for proportioning was also performed for the quarter-section corner and the position fell southeast of the locus of evidence as an outlier.

After calculating the adjusted courses for McLellan's survey, the lines were again retraced. The adjusted north line of Tract "B" has evidence of an old fence. Inside the angle point of corner 3 in Tract "B" is found another and larger paved playing area. A newspaper article from The La Grande Observer, dated Sept. 3, 2004, was found later and corroborated my interpretation that this was part of the old golf course. This article has an interview with a long time landowner (now deceased). See references listed on this survey plat for more information. This solution is found to incorporate the best available evidence and harmonizes well with the calls of record for the Oro Dell Quarry, deed dated 1958.

### Center quarter-section corner of Section 36

As stated above, the center quarter-section corner was set in Darley's survey of 1913 and a diligent search failed to find the marked stone corner. The corner was set by the standard method in the present survey. The resulting intersection of section centerlines falls 70 feet west of an old north-south fenceline marked by stone mounds.

① Found a 4 1/2 in. diam. o.d. iron pipe, up 1 ft., in north-south fence. No record of present monument. Jeffery Peterson, in Survey No. 009-1996 takes accessories and states that A.H. McClain set a 2x2 nub from found BT stump in 1922 survey notes for City of La Grande. Previous to that C.T. Darley states "Sec. Cor. in place" April 19, 1913, P. 353, OSV. J.W. Kimbrell sets stone from found BTs, March 29, 1887, P. 5, OSV.  
Found accessories:  
A 1 1/2 in. diam. alum. cap on 5/8 in. diam. iron rod, up 2 ins., mkd. UNION COUNTY SURVEYOR NW RP bears N 54°W, 5.53 ft.  
A 1 1/2 in. diam. alum. cap on 5/8 in. diam. iron rod, up 2 ins., mkd. UNION COUNTY SURVEYOR SW RP bears S 47°W, 4.90 ft.  
A pine with healed blaze bears N 70°E.  
A Douglas fir with healed blaze bears S 71°E.  
Using hand compass set at 19°E. declination and steel tape.

② Set a 3 1/4 in. diam. alum. cap on a 5/8 in. diam. by 30 in. long iron rod (rebar), driven 22 inches in the ground, placed rock collar and set t-post alongside West, 1.5 ft. and driven 20 ins. in the ground, marked as shown:  
From which:  
A Ponderosa pine, 24 ins. diam. at breast height, bears N. 47° E., 25.10 ft., marked: 1/4 S36 BT  
A Ponderosa pine, 16 ins. diam. at breast height, bears S. 43° E., 54.10 ft., marked: 1/4 S1 BT  
A Ponderosa pine, 16 ins. diam. at breast height, bears S. 68° W., 74.00 ft., marked: 1/4 S1 BT  
A Ponderosa pine, 15 ins. diam. at breast height, bears N. 18° W., 35.70 ft., marked: 1/4 S36 BT

③ Set a 3 1/4 in. diam. alum. cap on a 5/8 in. diam. by 30 in. long iron rod (rebar), driven 22 inches in the ground, against a 8 1/2 in. dia. Douglas fir and graded between roots (used as NW bearing tree), placed mound of stone to top. A galv. steel post placed alongside SE'ly, 3 ft. and driven 18 ins. in the ground, marked as shown:  
A Douglas fir, 11 ins. diam. at breast height, bears N. 69° E., 9.15 ft., marked: T2S R37E S36 BT  
A Douglas fir, 9 ins. diam. at breast height, bears S. 51° E., 12.80 ft., marked: T3S R37E S1 BT  
A Douglas fir, 8 ins. diam. at breast height, bears S. 36° W., 7.15 ft., marked: T3S R37E S2 BT  
A Doug. fir, 8 1/2 ins. diam. at breast height, bears N. 45° W., 0.65 ft. to center and 0.25 ft. to face, marked X at breast ht. and BT at base.

④ Set a 3 1/4 in. diam. alum. cap on a 5/8 in. diam. by 30 in. long iron rod, driven 20 inches in the ground with mound of stone placed around to top. A t-post placed alongside and driven 18 ins. in the ground, bears N 30°W, 1.8 ft., marked as shown:  
A silver DEEP-1 magnet, buried 6 ins. in the ground, bears N. 64° E., 3.60 ft.  
A pink DEEP-1 magnet, buried 6 ins. in the ground, bears S. 7° E., 9.85 ft.  
A "+" cross" chiseled into vertical face of rock outcrop 3' x 3.5' x 2' high, with "B0" chiseled above on horizontal shelf, bears S. 62° W., 17.45 ft.  
An orange DEEP-1 magnet, buried 6 ins. in the ground, bears N. 7° W., 9.95 ft.

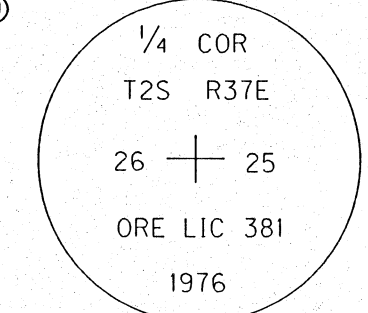
⑤ Found a 2 3/8 in. diam. brass cap on 2 in. diam. iron post, up 8 ins. at center of 6 ft. diam. by 1 ft. high mound of stone. Marked as shown:  
Found four 5/8 in. diam iron rods with mutilated yellow plastic caps at record bearings and distances, Survey No. 049-2002.

⑥ Found a 2 in. diam. o.d. iron pipe, up 7 ins., on steep slope in brush, approximately 20 ft. vertical above flat with locust grove, approx. 200' north of railroad. Although this corner is of unknown origin, it is a long time accepted corner of local control. Shown on OSHD Dwg. No. 2B-16-6, dated 1922, as 2" I.P. and mound of stones, also on OSHD Dwg. Nos. IR-1-760, IR-1-908 and IR-3-234. Shown on Survey Nos. 59-1974, 67-1976, 40-1980 and 007-2002.

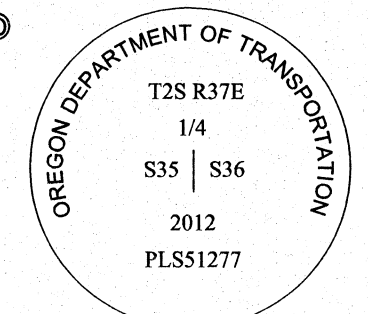
⑦ Found a boulder, 2.5 ft. by 3 ft. by 2 ft. high, with chiseled cross on top, marks are 4 ins. long and chiseled along natural faults on north and west sides. Found NE bearing tree, a pine 4.3 ft. d.b.h. with opened blaze and visible scribing, bears at record. Called and described on P. 230 in Old Survey Vol., dated 1890, also shown on Survey Nos. 17-1973 and 33-1989.

⑧ Found a 5 ft. diam. stone mound with large stones, 2 ft. square +/-, 10 ft. below dirt road and in old east-west-south fence corner, set on 8 in. spike in ground at center. Shown on Survey No. 33-1989.

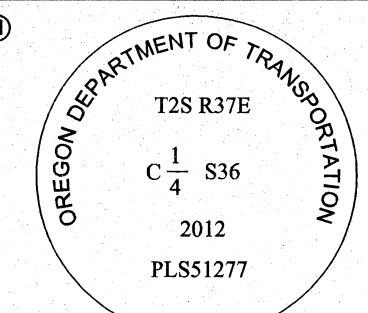
⑨ Found a 3 in. diam. brass cap on 2 1/2 in. diam. iron post, up 15 ins. above ground and leaning south, with rock collar, east - west fence bears north 2.5 ft. An old stump with visible scribe bears at record for original southwest BT. Found fir BT's from 1976 with healed blazes, bearing at record.



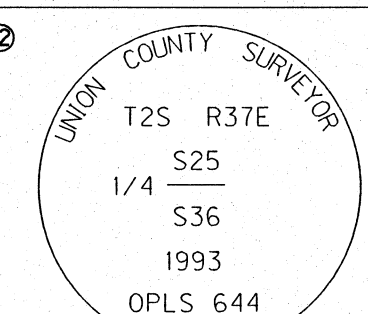
⑩ Set a 3 1/4 in. diam. alum. cap on a 2 1/2 in. diam. by 30 in. long alum. post, buried 22 inches in the ground, collar around monument, set a t-post 2.7 ft. NE'ly, marked as shown.  
From which:  
A 5/8 in. diam. by 30 in. long iron rod with alum. cap, in wire fenceline, mkd.: 000T NE, bears N38°14'47"E, 51.25 ft.  
A pink DEEP-1 magnet, buried 6 ins. in the ground, bears S43°02'00"E, 11.68 ft.  
A blue DEEP-1 magnet, buried 6 ins. in the ground, bears S51°11'00"W, 15.16 ft.  
A 5/8 in. diam. by 30 in. long iron rod with alum. cap, in wire fenceline, mkd.: 000T NW, bears N23°47'51"W, 52.64 ft.



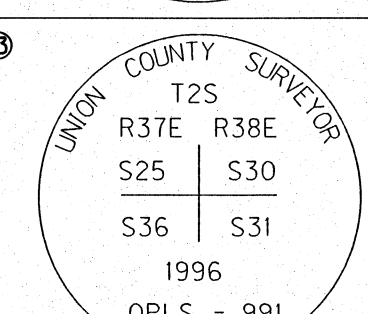
⑪ At position of intersection of Sec. 36 centerlines: Set a 3 1/4 in. diam. alum. cap on a 2 1/2 in. diam. by 30 in. long alum. post, buried 24 inches in the ground, clear DEEP-1 magnet buried alongside at base, placed stone mound around monument, set a t-post 2.5 ft. west, marked as shown:  
From which:  
A silver DEEP-1 magnet, buried 6 ins. in the ground, within 3 large stones on E'ly side of draw, bears N44°40'E, 33.15 ft.  
A pink DEEP-1 magnet, buried 6 ins. in the ground, with 2 large stones placed on top, on E'ly side of draw, bears S66°22'E, 65.75 ft.  
A blue DEEP-1 magnet, buried 6 ins. in the ground, on slope above brush, W'ly side of draw, bears S64°24'W, 26.65 ft.  
A orange DEEP-1 magnet, buried 6 ins. in the ground, on slope above brush, W'ly side of draw, bears N56°38'W, 37.65 ft.



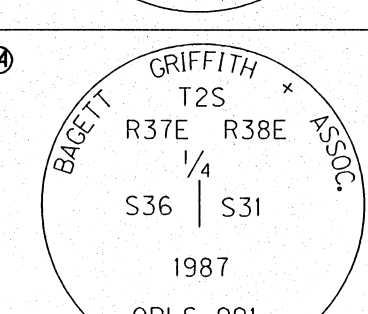
⑫ Found a 2 1/2 in. diam. alum. cap on a 2 1/2 in. diam. alum. post, up 10 inches, next to rock jack, marked as shown.



⑬ Found a 2 1/2 in. diam. alum. cap on a 2 1/2 in. diam. alum. post, up 12 inches, a rock jack lies SW'ly 4.5 ft.. SW RP is at sw'ly corner of same rock jack, marked as shown.  
Found all 4 references, all are 1 1/2 ins. diam. alum. caps on 5/8 ins. diam. iron rods, bearing at record, all mkd. with UNION COUNTY SURVEYOR (along with quadrant identifier) and RP.



⑭ Found a 2 1/2 in. diam. alum. cap on a 2 1/2 in. diam. alum. post, up 4 inches, 3 ft. west of north-south fence, with stone mound, marked as shown:



**REGISTERED PROFESSIONAL LAND SURVEYOR**

OREGON  
JULY 13, 1999  
PETER C. ELDER  
51277

RENEWS: 12/31/2013

**OREGON DEPARTMENT OF TRANSPORTATION**

RETRACEMENT AND QUARRY MONUMENTATION  
SECTION 36, T.2S., R.37E., W.M., and ORO DELL QUARRY  
184 - OLD OREGON TRAIL HIGHWAY  
UNION COUNTY

FOR ODOT REGION 5    April 16, 2012 to Feb. 13, 2013  
3012 ISLAND AVE.    SCALE: NTS  
LA GRANDE, OR 97850    SHEET 2 OF 3

**UNION COUNTY SURVEYOR**

Date Received: 2/13/13

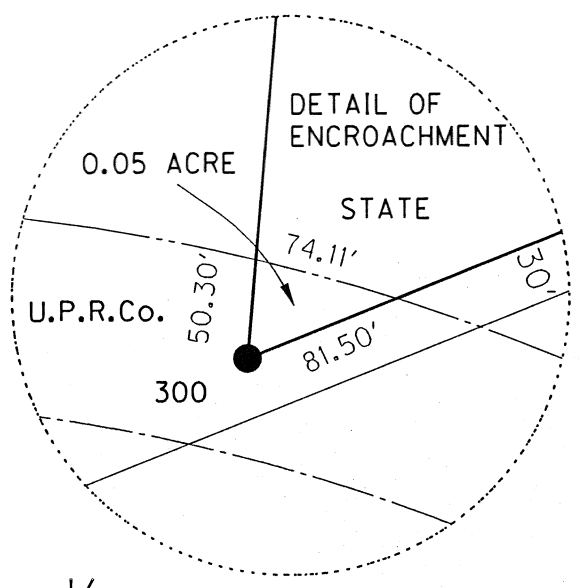
Date Filed: 2/14/13

By: *[Signature]*

File No.: 003-2013



ROW and QUARRY DETAIL, SECTION 36, T. 2 S., R. 37 E., W.M.



300  
Set 1/2" alum. cap on 5/8" diam. by 30" long iron rod (smooth) mkd.: ODOT 300, w/punchmark N. 96109.89 E. 152068.25

1062  
Fd. 3/4" diam. iron rod, no cap, at center of rails, Survey No. 047-2002; N. 96072.54 E. 151636.37

303  
Set 1/2" Alum. Cap on 5/8" diam. by 30" long iron rod (smooth) set in drill hole down 15 inches. placed mound of stone around; mkd.: ODOT 303, w/punchmark N. 96204.66 E. 152827.24

302  
Set 1/2" alum. cap on 5/8" diam. by 30" long iron rod (smooth) mkd.: ODOT 302, w/punchmark N. 96236.46 E. 152385.94

104  
Fd. 1/2" diam. plastic cap on 5/8" diam. iron rod mkd.: PLS 848, up 2", Survey No. 005-2000. N. 97108.73 E. 152155.10

102  
Fd. 2 3/4" diam. brass disk in conc., mkd.: POTP EB LINE with 4x4 wood post N. 96251.07 E. 151715.98

RECORD DEED CALL TO NE CORNER OF QUARRY

103  
Fd. 1/2" diam. plastic cap on 5/8" diam. iron rod mkd.: PLS 848, UP 6" on steep bank, Survey No. 005-2000. N. 97038.39 E. 152951.72

101  
Fd. 1/2" diam. plastic cap on 5/8" diam. iron rod mkd.: PLS 848, UP 8" on bank, Survey No. 005-2000. N. 96500.53 E. 152904.37

304  
Set 1/2" alum. cap on 5/8" diam. by 30" long iron rod (smooth) mkd.: ODOT 306. N. 96418.20 E. 152826.53

305  
Set 1/2" alum. cap on 5/8" diam. by 30" long iron rod (smooth) mkd.: ODOT 306. N. 96415.77 E. 152896.90

39  
Fd. 1/2" alum. cap on 5/8" iron rod mkd.: Oregon Dept. of Trans. NET 39, Survey No. 047-2002 N. 95097.07 E. 149312.10

TBM71X  
Set 30" long steel t-post, up 2" with drilled punchmark, on wide top of fill slope at SE'y end of WB bridge N. 95202.64 E. 153050.39

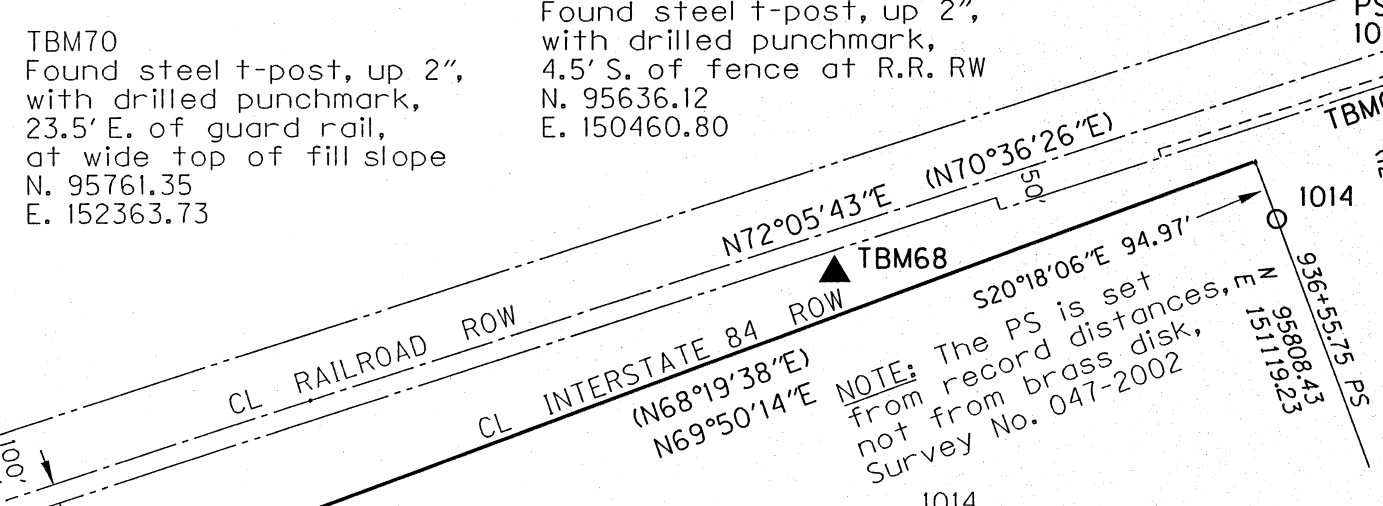
222  
Fd. 1" diam. plastic cap on 1/2" diam. iron rod, mkd.: APA CONTROL, on abandoned abutment N. 95999.47 E. 151929.32

1063  
Fd. 3/4" diam. iron rod, no cap, at center of rails, Survey No. 047-2002. N. 96010.28 E. 151410.13

TBM70  
Found steel t-post, up 2", with drilled punchmark, 23.5' E. of guard rail, at wide top of fill slope N. 95761.35 E. 152363.73

TBM68  
Found steel t-post, up 2", with drilled punchmark, 4.5' S. of fence at R.R. RW N. 95636.12 E. 150460.80

40  
Fd. 1/2" alum. cap on 5/8" iron rod mkd.: Oregon Dept. of Trans. NET 40, Survey No. 047-2002 N. 95211.07 E. 149801.30



NARRATIVE FOR QUARRY DETAIL

In this survey for the Oro Dell Quarry it is also necessary to establish the boundary between state owned property adjacent to the quarry and mark the line between said state property and the adjacent landowner on the east side of section 36; said property described in Book 142, Page 656, Union County records, now owned by Daniel and Virginia Webster. To establish the boundaries required for the state owned Oro Dell Quarry and the Webster property the subdivision of Section 36 was first completed. It was also necessary to retrace a portion of the centerline of the abandoned U.S. Highway 30, as the north right of way line is the southern boundary of the quarry and also bounds the Webster property. A portion of the centerline of the Union Pacific Railroad Co. right of way is also retraced. The record data for and resolution of railroad right of way is shown on Union Co. Survey No. 047-2002. A portion of that right of way is changed since said plat and is shown hereon.

**Oro Dell Quarry**  
A survey had been previously commissioned by the agency, Survey No. 005-2000, and is a partial survey of the boundaries of the quarry consisting of the north line and monuments set on the southerly ends of the east and west lines at an approximate and unknown distance from their southerly terminus. The basis of bearing for the deed calls is the Oregon Coordinate System of 1927, North zone, NAD 27 datum. The current survey retraced said previous survey and is in close agreement with it. The record bearings shown are from Deed Book 140 Page 153 and are grid bearings based on said NAD27 datum with an average convergence angle of 1°41'28", grid north to geodetic north. The record grid bearing on the east line of the quarry converted to geodetic is N5°11'28"E. My retraced grid bearing on said line converted to geodetic with the stated average convergence angle of 0°07'55" returns a bearing of N5°09'49"E.

**Abandoned U.S. Highway 30 Right of Way**  
The record data for the old highway is shown on Oregon State Highway Division drawing No. 2B-16-6. Although the pavement has been obliterated on the south side of the quarry, the box culvert shown at Station 287+50 was intact and the pavement ahead on station still extant. Also, remains of the old structure on each side of the old highway, at the now extinct and abandoned undercrossing and railroad bridge at Station 278+83.7, are recovered and used in the resolution.

**U.P.R.Co. Right of Way**  
The monuments needed to define the curve for the centerline of the railroad right of way are recovered and shown hereon with the resolution from Survey No. 047-2002. A portion of said right of way has changed since Survey No. 047-2002 by Quit Claim Deed from U.P.R. Co. to State of Oregon, Deed No. 20041772, and is shown hereon; said change also shown on ODOT Drawing No. 10B-17-30. A small encroachment of U.P.R. Co. onto state land at the southwest corner of the quarry is also discovered and shown hereon.

**Webster Property**  
The property first described in Deed Book 142 Page 656 and conveyed by the state of Oregon is bounded on the south by the north right of way line of I-84 Old Oregon Trail Highway, on the north by the east-west centerline of section 36, on the east by the east line of section 36, on the south and west sides by 350 foot offsets from the said east-west centerline and east line, with both the north right of way line of abandoned highway 30 and the north-south centerline of the southeast quarter of said section also a portion of the west boundary.

LEGEND

- FOUND MONUMENT AS DESCRIBED ON SHEET
- SET CADASTRAL CORNER
- SET 5/8" diam. by 30 in. long iron rod with 1/2 in. diam. alum. cap, marked ODOT and point number as shown.
- ▲ NETWORK POINT
- ⊠ FOUND CORNER McLELLAN 1920
- ( ) RECORD DATA PER SURVEY NO. 047-2002
- [ ] RECORD DATA PER UPRR DEED 20041772
- < > RECORD DATA PER ODOT DWG. NO. 10B-17-30
- SFNF SEARCHED FOR NOT FOUND
- ( NO. --- ) RECORD DATA FOR SURVEY AS NOTED

SOUTH QUARRY BOUNDARY CURVE TABLE

FROM POINT	TO POINT	LC LENGTH	LC BEARING	CURVE LENGTH
302 PC	303	442.44'	S85°52'42"E	457.45'
303	306	212.28'	S47°57'42"E	214.22'
306	PT	75.48'	S31°36'57"E	75.56'

**UNION COUNTY SURVEYOR**  
Date Received 2/13/13  
Date Filed 2/14/13  
By *Richard G. Nelson*  
File No. 003-2013

REGISTERED PROFESSIONAL LAND SURVEYOR  
*Peter C. Elder*  
OREGON JULY 13, 1999 PETER C. ELDER 51277  
RENEWS: 12/31/2013

OREGON DEPARTMENT OF TRANSPORTATION  
RETRACEMENT AND QUARRY MONUMENTATION  
SECTION 36, T.2S., R.37E., W.M., and ORO DELL QUARRY  
184 - OLD OREGON TRAIL HIGHWAY  
UNION COUNTY

FOR ODOT REGION 5 April 16, 2012 to Feb. 13, 2013  
3012 ISLAND AVE. SCALE: 1 IN. = 300 FT.  
LA GRANDE, OR 97850 SHEET 3 OF 3