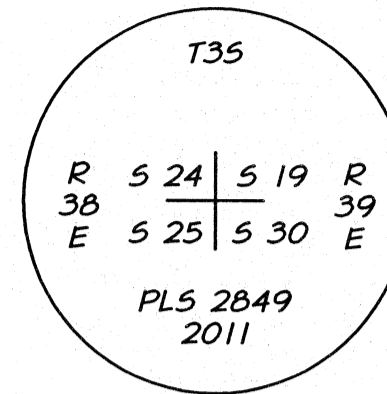
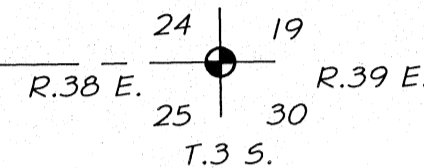




SCALE: 1" = 100'



FOUND 2"ID X 30" ALUMINUM PIPE, MAGNET-EQUIPPED, WITH 3" ALUMINUM CAP ATTACHED, MARKED AS SHOWN. SEE CS 002-2012



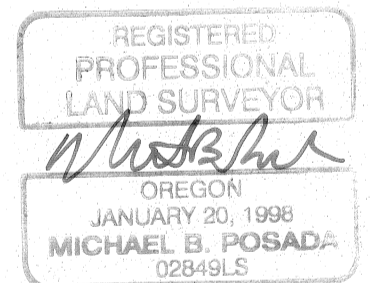
SURVEY NARRATIVE

THIS SURVEY WAS PERFORMED IN ACCORDANCE WITH ORS 209.150(1) WHICH REQUIRES ANY PERSON OR PUBLIC AGENCY REMOVING, DISTURBING OR DESTROYING A MONUMENT OF RECORD, TO REPLACE SAID MONUMENT. AS PART OF THE RECONSTRUCTION OF AIRPORT LANE, MONUMENTS AT THE INTERSECTIONS OF BOTH EASTERN OREGON COURT AND DOWNS ROAD WITH AIRPORT LANE WERE LOCATED AND TIED PRIOR TO CONSTRUCTION. AFTER CONSTRUCTION WAS COMPLETED, THESE MONUMENTS WERE REPLACED AS PER ORS.

NO BOUNDARY DETERMINATION WAS MADE WITH THIS SURVEY. SAID NEW MONUMENTS WERE SET AT THE LOCATIONS WHERE THEY WERE FOUND PRIOR TO CONSTRUCTION, DISTANCES AND BEARINGS SHOWN ARE RECORD PER LA GRANDE/UNION COUNTY AIRPORT COMMERCIAL/INDUSTRIAL PARK SUBDIVISION

BASIS OF BEARINGS

589°03'25"W BETWEEN THE FOUND MONUMENTS AT THE SW CORNER AND THE SE CORNER OF SECTION 24, T.3 S., R.38 E. W.M. AS SHOWN ON UNION COUNTY SURVEY 23-90



EXPIRES: 12-31-14
DATED: 12-26-12

LEGEND

- INDICATES SET 5/8 INCH IRON ROD, 30 INCHES LONG WITH 1 1/2" DIA. ALUMINUM CAP STAMPED "APA WA41295 OR2849", SET 0.5 BELOW GROUND IN MONUMENT CASE
- ⊕ INDICATES FOUND MONUMENT AS DESCRIBED HEREON
- — — — — INDICATES ROAD RIGHT-OF-WAY
- — — — — INDICATES ROAD CENTERLINE

REFERENCES

- CS 23-90
- CS 002-2012
- LA GRANDE/UNION COUNTY AIRPORT COMMERCIAL/INDUSTRIAL PARK SUBDIVISION (MF# 136969)

UNION COUNTY SURVEYOR

Date Received 12/26/12

Date Filed 12/26/12

By E. R. ...

File No. 041-2012

MAP OF SURVEY
CORNER RESTORATION ON AIRPORT LANE AT
EASTERN OREGON COURT AND DOWNS ROAD
IN UNION COUNTY OREGON
IN THE SW 1/4, SECTION 24, T.3S., R.38E. W.M.,

UNION COUNTY ROAD DEPT. 10515 N. MCALISTER RD
ISLAND CITY, OR. 97150

SCALE: 1" = 100'

DATE: DEC. 26, 2012

JOB NO. 694-44

anderson perry & associates, inc.
ENGINEERING · SURVEYING · MATERIALS TESTING
LA GRANDE, OR. WALLA WALLA, WA

SHEET 1/1

SURVEY NUMBER 041-2012